



TEMPORARY ABANDONMENT WELL APPLICATION

OPERATOR: License# _____
 Name: _____
 Address 1: _____
 Address 2: _____
 City: _____ State: _____ Zip: _____ + _____
 Contact Person: _____
 Phone: (_____) _____
 Contact Person Email: _____
 Field Contact Person: _____
 Field Contact Person Phone: (_____) _____

API No. 15- _____
 Spot Description: _____
 _____ - _____ - _____ - _____ Sec. _____ Twp. _____ S. R. _____ E W
 _____ feet from N / S Line of Section
 _____ feet from E / W Line of Section
 GPS Location: Lat: _____, Long: _____
(e.g. xx.xxxxx) (e.g. -xxx.xxxxx)
 Datum: NAD27 NAD83 WGS84
 County: _____ Elevation: _____ GL KB
 Lease Name: _____ Well #: _____
 Well Type: (check one) Oil Gas OG WSW Other: _____
 SWD Permit #: _____ ENHR Permit #: _____
 Gas Storage Permit #: _____
 Spud Date: _____ Date Shut-In: _____

| | Conductor | Surface | Production | Intermediate | Liner | Tubing |
|------------------|-----------|---------|------------|--------------|-------|--------|
| Size | | | | | | |
| Setting Depth | | | | | | |
| Amount of Cement | | | | | | |
| Top of Cement | | | | | | |
| Bottom of Cement | | | | | | |

Casing Fluid Level from Surface: _____ How Determined? _____ Date: _____

Casing Squeeze(s): _____ to _____ w / _____ sacks of cement, _____ to _____ w / _____ sacks of cement. Date: _____
(top) (bottom) (top) (bottom)

Do you have a valid Oil & Gas Lease? Yes No

Depth and Type: Junk in Hole at _____ Tools in Hole at _____ Casing Leaks: Yes No Depth of casing leak(s): _____
(depth) (depth)

Type Completion: ALT. I ALT. II Depth of: DV Tool: _____ w / _____ sacks of cement Port Collar: _____ w / _____ sack of cement
(depth) (depth)

Packer Type: _____ Size: _____ Inch Set at: _____ Feet

Total Depth: _____ Plug Back Depth: _____ Plug Back Method: _____

Geological Data:

| Formation Name | Formation Top | Formation Base | Completion Information |
|----------------|---------------|----------------|--|
| 1. _____ | At: _____ | to _____ Feet | Perforation Interval _____ to _____ Feet or Open Hole Interval _____ to _____ Feet |
| 2. _____ | At: _____ | to _____ Feet | Perforation Interval _____ to _____ Feet or Open Hole Interval _____ to _____ Feet |

~~UNDER PENALTY OF PERJURY I HEREBY ATTEST THAT THE INFORMATION CONTAINED HEREIN IS TRUE AND CORRECT TO THE BEST OF MY KNOWLEDGE~~

Submitted Electronically

| | | | | | |
|---|--|----------------|---------------------|----------------------|---------------------------------|
| Do NOT Write in This Space - KCC USE ONLY | Date Tested: _____ | Results: _____ | Date Plugged: _____ | Date Repaired: _____ | Date Put Back in Service: _____ |
| | Review Completed by: _____ Comments: _____ | | | | |
| TA Approved: <input type="checkbox"/> Yes <input type="checkbox"/> Denied Date: _____ | | | | | |

Mail to the Appropriate KCC Conservation Office:

| | | |
|--|---|--------------------|
| | KCC District Office #1 - 210 E. Frontview, Suite A, Dodge City, KS 67801 | Phone 620.225.8888 |
| | KCC District Office #2 / UPGS - 3450 N. Rock Road, Building 600, Suite 601, Wichita, KS 67226 | Phone 316.630.4000 |
| | KCC District Office #3 - 1500 SW Seventh Steet, Chanute, KS 66720 | Phone 620.432.2300 |
| | KCC District Office #4 - 2301 E. 13th Street, Hays, KS 67601-2651 | Phone 785.625.0550 |

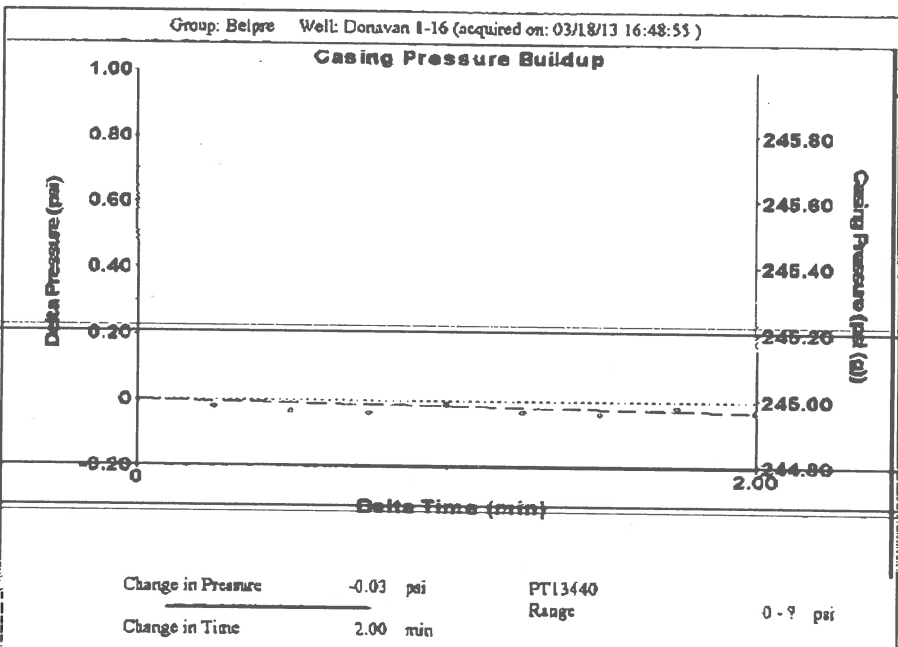
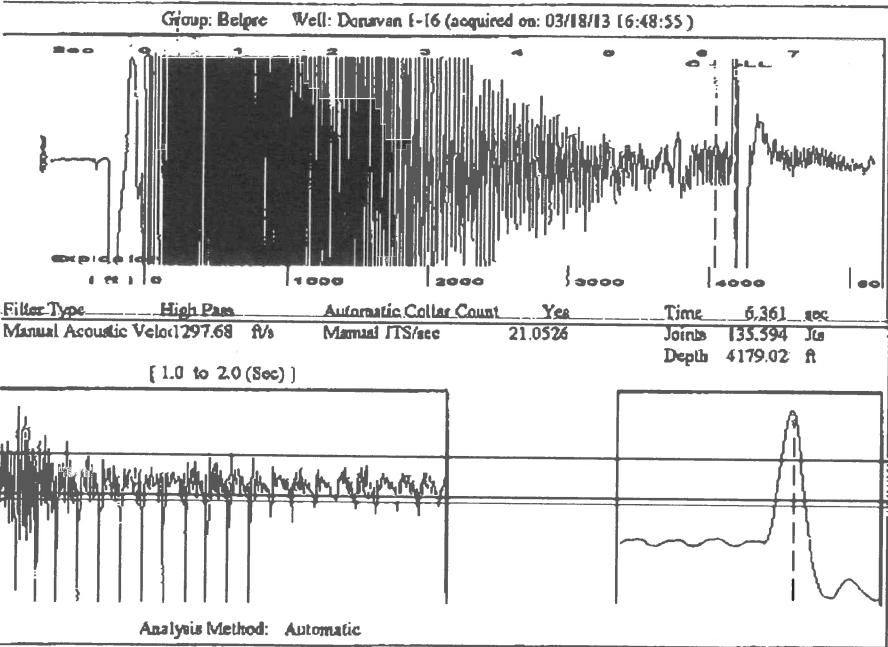
Received Fax: Mar 18 2013 5:09PM Fax Station: FG Holl Co. LLC PAGE 02/15

PAGE 02/15

FGHDL

6209953323

03/18/2013 16:54



Group: Belpre Well: Donovan 1-16 (acquired on: 03/18/13 16:48:55)

| | | | |
|-----------------------|--------------|-------------------------------|------------------|
| Production Current | Potential | Casing Pressure | Producing |
| Oil -.- | .-. BBL/D | 245.0 psi (g) | |
| Water -.- | .-. BBL/D | Casing Pressure Buildup | Annular Gas Flow |
| Gas -.- | .-. Mac/D | -0.030 psi | 0 Mac/D |
| | | 2.00 min | % Liquid |
| IPR Method | Vogel | Gas/Liquid Interface Pressure | 100 % |
| PBHP/SBHP | .-. | 271.4 psi (g) | |
| Production Efficiency | 0.0 | Liquid Level Depth | |
| Oil 40 deg.API | | 4179.02 ft | |
| Water 1.05 Sp.Gr.H2O | | Pump Intake Depth | |
| Gas 0.67 Sp.Gr.AIR | | 4254.00 ft | |
| Acoustic Velocity | 1313.95 ft/s | Formation Depth | |
| | | 4270.00 ft | |

| | |
|--------------------------------------|-------|
| Formation Submergence | |
| Total Gaseous Liquid Column HT (TVD) | 75 ft |
| Equivalent Gas Free Liquid HT (TVD) | 75 ft |
| Acoustic Test | |

| | |
|---------------|---------------|
| Pump Intake | 296.2 psi (g) |
| Producing BHP | 303.5 psi (g) |
| Static BHP | .-. psi (g) |

