



# TEMPORARY ABANDONMENT WELL APPLICATION

OPERATOR: License# \_\_\_\_\_  
 Name: \_\_\_\_\_  
 Address 1: \_\_\_\_\_  
 Address 2: \_\_\_\_\_  
 City: \_\_\_\_\_ State: \_\_\_\_\_ Zip: \_\_\_\_\_ + \_\_\_\_\_  
 Contact Person: \_\_\_\_\_  
 Phone: ( \_\_\_\_\_ ) \_\_\_\_\_  
 Contact Person Email: \_\_\_\_\_  
 Field Contact Person: \_\_\_\_\_  
 Field Contact Person Phone: ( \_\_\_\_\_ ) \_\_\_\_\_

API No. 15- \_\_\_\_\_  
 Spot Description: \_\_\_\_\_  
 \_\_\_\_\_ - \_\_\_\_\_ - \_\_\_\_\_ - \_\_\_\_\_ Sec. \_\_\_\_\_ Twp. \_\_\_\_\_ S. R. \_\_\_\_\_  E  W  
 \_\_\_\_\_ feet from  N /  S Line of Section  
 \_\_\_\_\_ feet from  E /  W Line of Section  
 GPS Location: Lat: \_\_\_\_\_, Long: \_\_\_\_\_  
(e.g. xx.xxxxx) (e.g. -xxx.xxxxx)  
 Datum:  NAD27  NAD83  WGS84  
 County: \_\_\_\_\_ Elevation: \_\_\_\_\_  GL  KB  
 Lease Name: \_\_\_\_\_ Well #: \_\_\_\_\_  
 Well Type: (check one)  Oil  Gas  OG  WSW  Other: \_\_\_\_\_  
 SWD Permit #: \_\_\_\_\_  ENHR Permit #: \_\_\_\_\_  
 Gas Storage Permit #: \_\_\_\_\_  
 Spud Date: \_\_\_\_\_ Date Shut-In: \_\_\_\_\_

	Conductor	Surface	Production	Intermediate	Liner	Tubing
Size						
Setting Depth						
Amount of Cement						
Top of Cement						
Bottom of Cement						

Casing Fluid Level from Surface: \_\_\_\_\_ How Determined? \_\_\_\_\_ Date: \_\_\_\_\_  
 Casing Squeeze(s): \_\_\_\_\_ to \_\_\_\_\_ w / \_\_\_\_\_ sacks of cement, \_\_\_\_\_ to \_\_\_\_\_ w / \_\_\_\_\_ sacks of cement. Date: \_\_\_\_\_  
(top) (bottom) (top) (bottom)  
 Do you have a valid Oil & Gas Lease?  Yes  No  
 Depth and Type:  Junk in Hole at \_\_\_\_\_  Tools in Hole at \_\_\_\_\_ Casing Leaks:  Yes  No Depth of casing leak(s): \_\_\_\_\_  
(depth) (depth)  
 Type Completion:  ALT. I  ALT. II Depth of:  DV Tool: \_\_\_\_\_ w / \_\_\_\_\_ sacks of cement  Port Collar: \_\_\_\_\_ w / \_\_\_\_\_ sack of cement  
(depth) (depth)  
 Packer Type: \_\_\_\_\_ Size: \_\_\_\_\_ Inch Set at: \_\_\_\_\_ Feet  
 Total Depth: \_\_\_\_\_ Plug Back Depth: \_\_\_\_\_ Plug Back Method: \_\_\_\_\_

**Geological Data:**

Formation Name	Formation Top	Formation Base	Completion Information
1. _____	At: _____	to _____ Feet	Perforation Interval _____ to _____ Feet or Open Hole Interval _____ to _____ Feet
2. _____	At: _____	to _____ Feet	Perforation Interval _____ to _____ Feet or Open Hole Interval _____ to _____ Feet

UNDER PENALTY OF PERJURY I HEREBY ATTEST THAT THE INFORMATION CONTAINED HEREIN IS TRUE AND CORRECT TO THE BEST OF MY KNOWLEDGE

Submitted Electronically

<b>Do NOT Write in This Space - KCC USE ONLY</b>	Date Tested: _____	Results: _____	Date Plugged: _____	Date Repaired: _____	Date Put Back in Service: _____
	Review Completed by: _____ Comments: _____				
TA Approved: <input type="checkbox"/> Yes <input type="checkbox"/> Denied Date: _____					

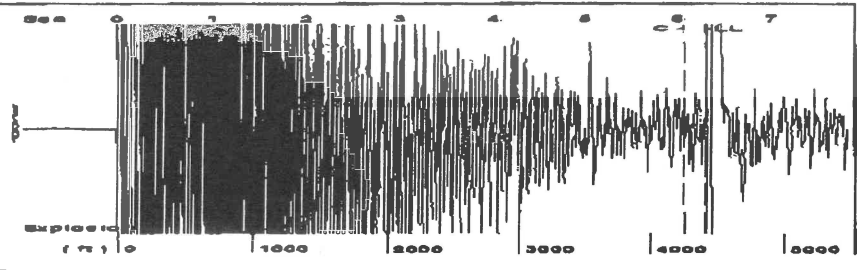
**Mail to the Appropriate KCC Conservation Office:**

	KCC District Office #1 - 210 E. Frontview, Suite A, Dodge City, KS 67801	Phone 620.225.8888
	KCC District Office #2 / UPGS - 3450 N. Rock Road, Building 600, Suite 601, Wichita, KS 67226	Phone 316.630.4000
	KCC District Office #3 - 1500 SW Seventh Steet, Chanute, KS 66720	Phone 620.432.2300
	KCC District Office #4 - 2301 E. 13th Street, Hays, KS 67601-2651	Phone 785.625.0550

Received Fax: Mar 18 2013 5:09PM Fax Station: FG Holl Co. LLC PAGE 04/15

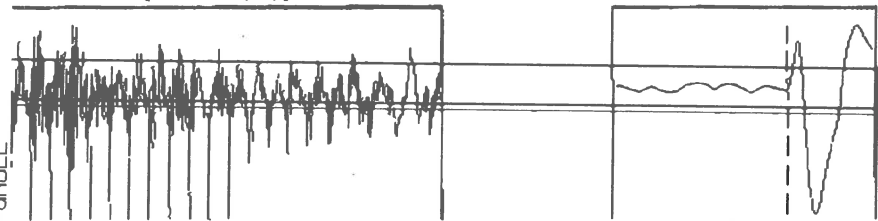
PAGE 04/15

Group: Belpre Well: Coppoc Rudd 1-9 (acquired on: 03/18/13 16:05:27)



Filter Type: High Pass Automatic Collar Count: Yes Time: 6.299 sec  
 Actual Acoustic Velocity: 1415.93 ft/s Manual JTS/sec: 22.779 Joints: 142.075 Jts  
 Depth: 4415.68 ft

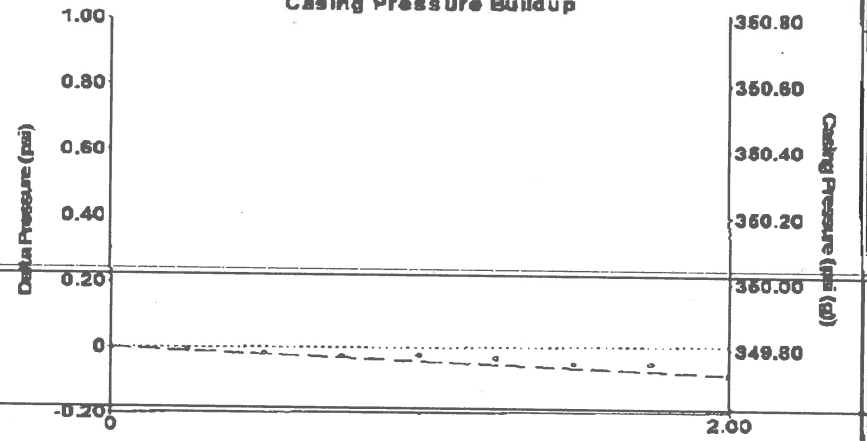
[ 1.5 to 2.5 (Sec) ]



Analysis Method: Automatic

Group: Belpre Well: Coppoc Rudd 1-9 (acquired on: 03/18/13 16:05:27)

Casing Pressure Buildup



Change in Pressure: -0.09 psi PT13440  
 Change in Time: 2.00 min Range: 0 - 7 psi

Group: Belpre Well: Coppoc Rudd 1-9 (acquired on: 03/18/13 16:05:27)

Production				
Current	Potential	Casing Pressure	Producing	
Oil -*-	-*- BBL/D	349.8 psi (g)	Annular Gas Flow	
Water -*-	-*- BBL/D	Casing Pressure Buildup	2 Mac/D	
Gas -*-	-*- Mac/D	-0.1 psi	% Liquid	100 %
		2.00 min		
IPR Method	Vogel	Gas/Liquid Interface Pressure		
PBHP/SBHP	-*-	382.7 psi (g)		
Production Efficiency	0.0	Liquid Level Depth		
Oil 40 deg.API		4415.68 ft		
Water 1.05 Sp.Gr.H2O		Pump Intake Depth		
Gas 0.60 Sp.Gr.AIR		4259.00 ft		
Acoustic Velocity	1402.02 ft/s	Formation Depth		
		4275.00 ft		

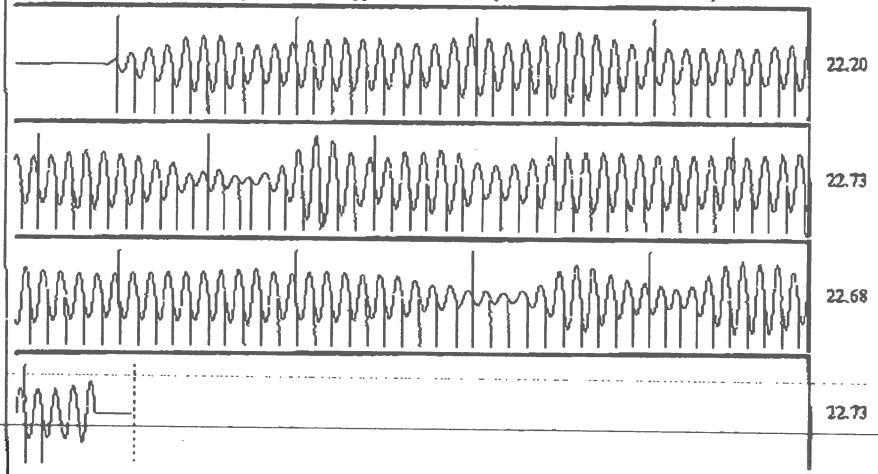


Formation Submergence  
 Total Gaseous Liquid Column HT (TVD) -\*- ft  
 Equivalent Gas Free Liquid HT (TVD) -\*- ft

Acoustic Test

Pump Intake: 381.5 psi (g)  
 Producing BHP: 381.6 psi (g)  
 Static BHP: -\*- psi (g)

Group: Belpre Well: Coppoc Rudd 1-9 (acquired on: 03/18/13 16:05:27)



Acoustic Velocity: 1402.02 ft/s Joints counted: 131  
 Joints Per Second: 22.5551 jts/sec Joints to liquid level: 142.075  
 Depth to liquid level: 4415.68 ft Filter Width: 20.779  
 Automatic Collar Count: Yes Time to 1st Collar: 0.26 6.068