



TEMPORARY ABANDONMENT WELL APPLICATION

All blanks must be complete

OPERATOR: License# _____
Name: _____
Address 1: _____
Address 2: _____
City: _____ State: _____ Zip: _____ + _____
Contact Person: _____
Phone: (_____) _____
Contact Person Email: _____
Field Contact Person: _____
Field Contact Person Phone: (_____) _____

API No. 15- _____
Spot Description: _____
____ - ____ - ____ - ____ Sec. _____ Twp. _____ S. R. _____ E W
_____ feet from N / S Line of Section
_____ feet from E / W Line of Section
GPS Location: Lat: _____, Long: _____
(e.g. xx.xxxxx) (e.g. -xxx.xxxxx)
Datum: NAD27 NAD83 WGS84
County: _____ Elevation: _____ GL KB
Lease Name: _____ Well #: _____
Well Type: (check one) Oil Gas OG WSW Other: _____
 SWD Permit #: _____ ENHR Permit #: _____
 Gas Storage Permit #: _____
Spud Date: _____ Date Shut-In: _____

	Conductor	Surface	Production	Intermediate	Liner	Tubing
Size						
Setting Depth						
Amount of Cement						
Top of Cement						
Bottom of Cement						

Casing Fluid Level from Surface: _____ How Determined? _____ Date: _____
Casing Squeeze(s): _____ to _____ w / _____ sacks of cement, _____ to _____ w / _____ sacks of cement. Date: _____
(top) (bottom) (top) (bottom)
Do you have a valid Oil & Gas Lease? Yes No
Depth and Type: Junk in Hole at _____ (depth) Tools in Hole at _____ (depth) Casing Leaks: Yes No Depth of casing leak(s): _____
Type Completion: ALT. I ALT. II Depth of: DV Tool: _____ w / _____ sacks of cement Port Collar: _____ w / _____ sack of cement
(depth) (depth)
Packer Type: _____ Size: _____ Inch Set at: _____ Feet
Total Depth: _____ Plug Back Depth: _____ Plug Back Method: _____

Geological Data:

Formation Name	Formation Top	Formation Base	Completion Information
1. _____	At: _____	to _____ Feet	Perforation Interval _____ to _____ Feet or Open Hole Interval _____ to _____ Feet
2. _____	At: _____	to _____ Feet	Perforation Interval _____ to _____ Feet or Open Hole Interval _____ to _____ Feet

UNDER PENALTY OF PERJURY I HEREBY ATTEST THAT THE INFORMATION CONTAINED HEREIN IS TRUE AND CORRECT TO THE BEST OF MY KNOWLEDGE

Submitted Electronically

Do NOT Write in This Space - KCC USE ONLY

Date Tested: _____ Results: _____ Date Plugged: _____ Date Repaired: _____ Date Put Back in Service: _____

Review Completed by: _____ Comments: _____

TA Approved: Yes Denied Date: _____

Mail to the Appropriate KCC Conservation Office:

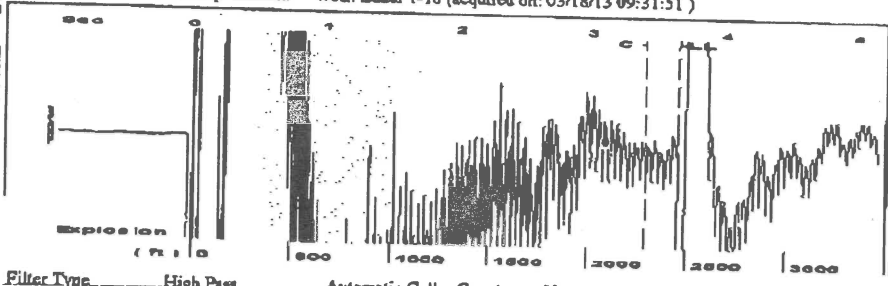
	KCC District Office #1 - 210 E. Frontview, Suite A, Dodge City, KS 67801	Phone 620.225.8888
	KCC District Office #2 / UPGS - 3450 N. Rock Road, Building 600, Suite 601, Wichita, KS 67226	Phone 316.630.4000
	KCC District Office #3 - 1500 SW Seventh Steet, Chanute, KS 66720	Phone 620.432.2300
	KCC District Office #4 - 2301 E. 13th Street, Hays, KS 67601-2651	Phone 785.625.0550

Received Fax : 03/18/2013 5:09PM Fax Station : FG HOLL Co., LLC PAGE 15/15

PAGE 15/15

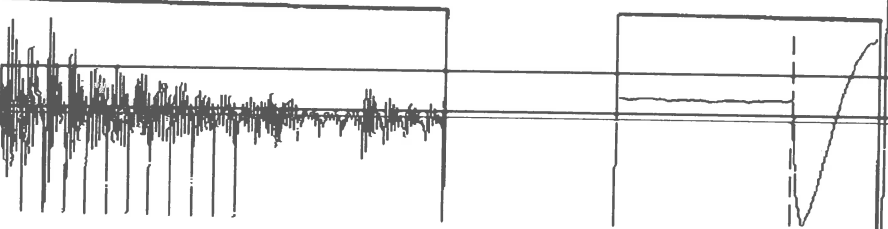
FGHOLL

Group: Radium Well: Bauer 1-18 (acquired on: 03/18/13 09:31:51)



Filter Type: High Pass Automatic Collar Count: Yes Time: 3.648 sec
 Manual Acoustic Velocity: 1326.32 ft/s Manual JTS/sec: 21.0526 Joints: 77.9388 Jts
 Depth: 2455.07 ft

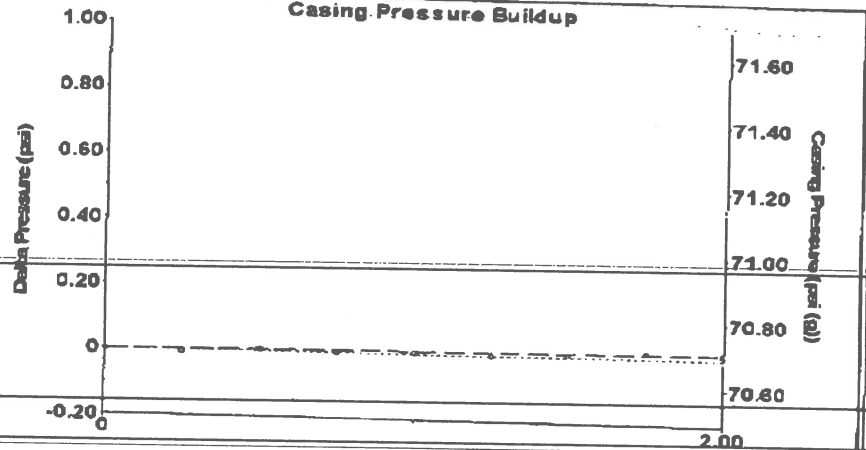
[0.5 to 1.5 (Sec)]



Analysis Method: Automatic

Group: Radium Well: Bauer 1-18 (acquired on: 03/18/13 09:31:51)

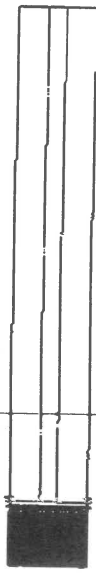
Casing Pressure Buildup



Change in Pressure: 0.02 psi PT13440
 Change in Time: 2.00 min Range: 0 - 9 psi

Group: Radium Well: Bauer 1-18 (acquired on: 03/18/13 09:31:51)

Production Current Oil -*- Water -*- Gas -*- IPR Method PBHP/SBHP Production Efficiency Oil 40 deg.API Water 1.05 Sp.Gr.H2O Gas 0.66 Sp.Gr.AIR Acoustic Velocity 1345.98 ft/s	Potential BBL/D BBL/D Mac/D Vogel -*- 0.0	Casing Pressure 70.7 psi (g) Casing Pressure Buildup 0.016 psi 2.00 min Gas/Liquid Interface Pressure 75.5 psi (g) Liquid Level Depth 2455.07 ft Pump Intake Depth 2411.00 ft Formation Depth 2411.00 ft	Producing Annular Gas Flow 0 Msc/D % Liquid 100 %
---	--	--	--

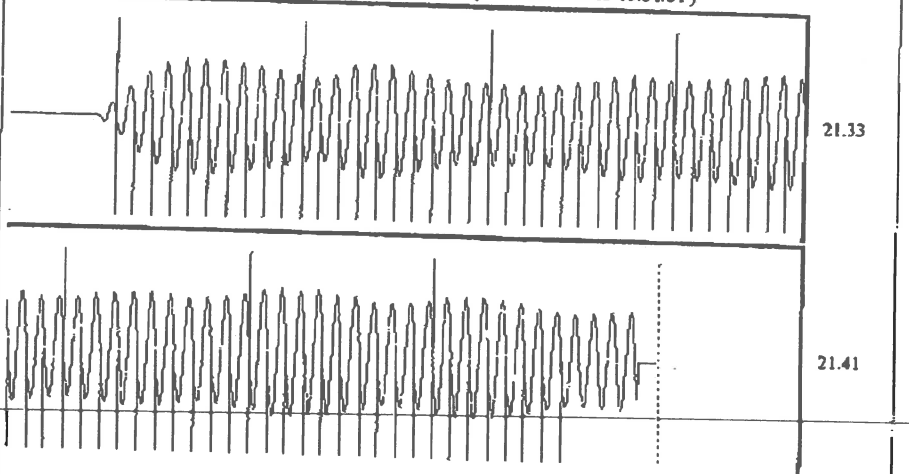


Formation Submergence
 Total Gaseous Liquid Column HT (TVD) -*- ft
 Equivalent Gas Free Liquid HT (TVD) -*- ft

Acoustic Test

Pump Intake 75.4 psi (g)
 Producing BHP 75.4 psi (g)
 Static BHP -*- psi (g)

Group: Radium Well: Bauer 1-18 (acquired on: 03/18/13 09:31:51)



Acoustic Velocity 1345.98 ft/s Joints counted 67
 Joints Per Second 21.3648 jts/sec Joints to liquid level 77.9388
 Depth to liquid level 2455.07 ft Filter Width 19.0526 23.0526
 Automatic Collar Count Yes Time to 1st Collar 0.272 3.408