



## TEMPORARY ABANDONMENT WELL APPLICATION

*All blanks must be complete*

OPERATOR: License# \_\_\_\_\_  
 Name: \_\_\_\_\_  
 Address 1: \_\_\_\_\_  
 Address 2: \_\_\_\_\_  
 City: \_\_\_\_\_ State: \_\_\_\_\_ Zip: \_\_\_\_\_ + \_\_\_\_\_  
 Contact Person: \_\_\_\_\_  
 Phone: ( \_\_\_\_\_ ) \_\_\_\_\_  
 Contact Person Email: \_\_\_\_\_  
 Field Contact Person: \_\_\_\_\_  
 Field Contact Person Phone: ( \_\_\_\_\_ ) \_\_\_\_\_

API No. 15- \_\_\_\_\_  
 Spot Description: \_\_\_\_\_  
 \_\_\_\_\_ - \_\_\_\_\_ - \_\_\_\_\_ - \_\_\_\_\_ Sec. \_\_\_\_\_ Twp. \_\_\_\_\_ S. R. \_\_\_\_\_  E  W  
 \_\_\_\_\_ feet from  N /  S Line of Section  
 \_\_\_\_\_ feet from  E /  W Line of Section  
 GPS Location: Lat: \_\_\_\_\_, Long: \_\_\_\_\_  
(e.g. xx.xxxxx) (e.g. -xxx.xxxxx)  
 Datum:  NAD27  NAD83  WGS84  
 County: \_\_\_\_\_ Elevation: \_\_\_\_\_  GL  KB  
 Lease Name: \_\_\_\_\_ Well #: \_\_\_\_\_  
 Well Type: (check one)  Oil  Gas  OG  WSW  Other: \_\_\_\_\_  
 SWD Permit #: \_\_\_\_\_  ENHR Permit #: \_\_\_\_\_  
 Gas Storage Permit #: \_\_\_\_\_  
 Spud Date: \_\_\_\_\_ Date Shut-In: \_\_\_\_\_

	Conductor	Surface	Production	Intermediate	Liner	Tubing
Size						
Setting Depth						
Amount of Cement						
Top of Cement						
Bottom of Cement						

Casing Fluid Level from Surface: \_\_\_\_\_ How Determined? \_\_\_\_\_ Date: \_\_\_\_\_

Casing Squeeze(s): \_\_\_\_\_ to \_\_\_\_\_ w / \_\_\_\_\_ sacks of cement, \_\_\_\_\_ to \_\_\_\_\_ w / \_\_\_\_\_ sacks of cement. Date: \_\_\_\_\_  
(top) (bottom) (top) (bottom)

Do you have a valid Oil & Gas Lease?  Yes  No

Depth and Type:  Junk in Hole at \_\_\_\_\_  Tools in Hole at \_\_\_\_\_ Casing Leaks:  Yes  No Depth of casing leak(s): \_\_\_\_\_  
(depth) (depth)

Type Completion:  ALT. I  ALT. II Depth of:  DV Tool: \_\_\_\_\_ w / \_\_\_\_\_ sacks of cement  Port Collar: \_\_\_\_\_ w / \_\_\_\_\_ sack of cement  
(depth) (depth)

Packer Type: \_\_\_\_\_ Size: \_\_\_\_\_ Inch Set at: \_\_\_\_\_ Feet

Total Depth: \_\_\_\_\_ Plug Back Depth: \_\_\_\_\_ Plug Back Method: \_\_\_\_\_

**Geological Data:**

Formation Name	Formation Top	Formation Base	Completion Information
1. _____	At: _____	to _____ Feet	Perforation Interval _____ to _____ Feet or Open Hole Interval _____ to _____ Feet
2. _____	At: _____	to _____ Feet	Perforation Interval _____ to _____ Feet or Open Hole Interval _____ to _____ Feet

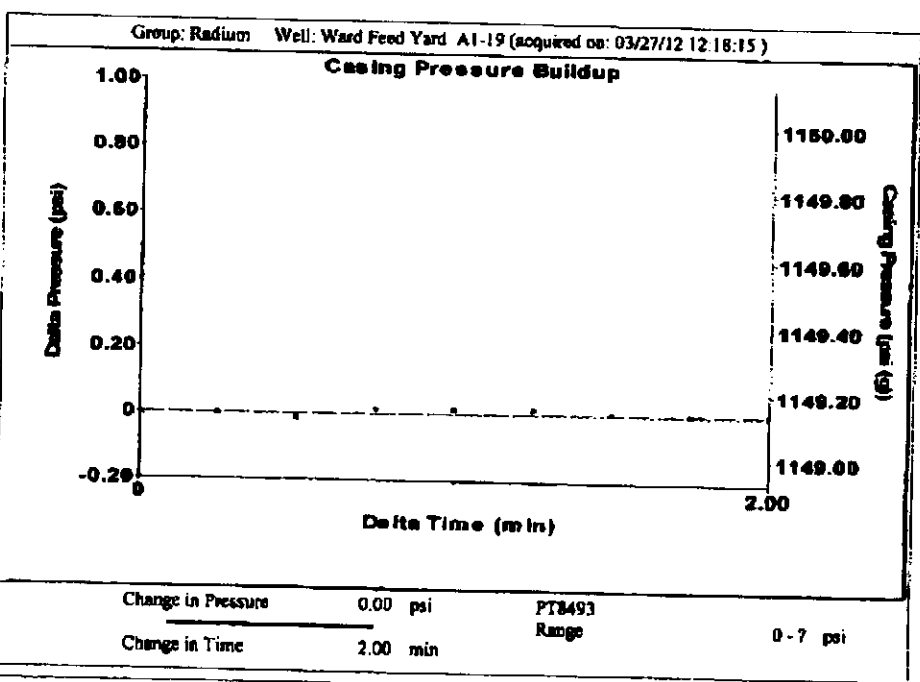
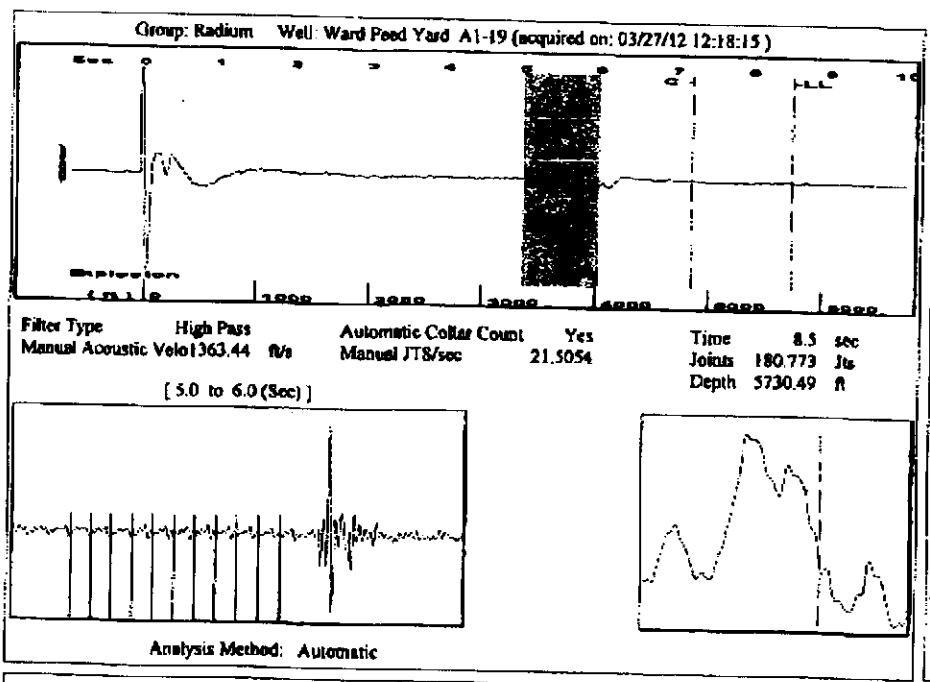
UNDER PENALTY OF PERJURY I HEREBY ATTEST THAT THE INFORMATION CONTAINED HEREIN IS TRUE AND CORRECT TO THE BEST OF MY KNOWLEDGE

### Submitted Electronically

<b>Do NOT Write in This Space - KCC USE ONLY</b>	Date Tested: _____	Results: _____	Date Plugged: _____	Date Repaired: _____	Date Put Back in Service: _____
	Review Completed by: _____ Comments: _____				
TA Approved: <input type="checkbox"/> Yes <input type="checkbox"/> Denied Date: _____					

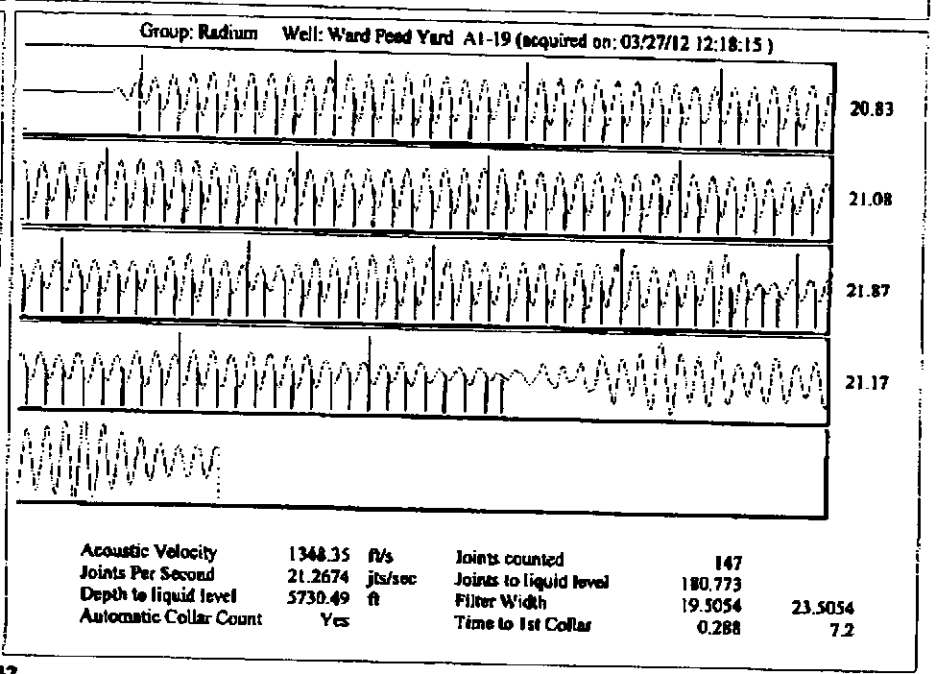
**Mail to the Appropriate KCC Conservation Office:**

	KCC District Office #1 - 210 E. Frontview, Suite A, Dodge City, KS 67801	Phone 620.225.8888
	KCC District Office #2 / UPGS - 3450 N. Rock Road, Building 600, Suite 601, Wichita, KS 67226	Phone 316.630.4000
	KCC District Office #3 - 1500 SW Seventh Steet, Chanute, KS 66720	Phone 620.432.2300
	KCC District Office #4 - 2301 E. 13th Street, Hays, KS 67601-2651	Phone 785.625.0550



Group: Radium Well: Ward Feed Yard A1-19 (acquired on: 03/27/12 12:18:15)

Production Current	Potential	Casing Pressure	Producing
Oil -.-	-.- BBL/D	1149.1 psi (g)	
Water -.-	-.- BBL/D	Casing Pressure Buildup	Annular Gas Flow
Gas -.-	-.- Msc/D	0.005 psi	1 Msc/D
		2.00 min	% Liquid
IPR Method	Vogel	Gas/Liquid Interface Pressure	100 %
PBHP/SBHP	-.-	1315.7 psi (g)	
Production Efficiency	0.0	Liquid Level Depth	
Oil 40 deg API		5730.49 ft	
Water 1.05 Sp.Gr.H2O		Pump Intake Depth	
Gas 0.63 Sp.Gr.AIR		3830.00 ft	
Acoustic Velocity	1348.35 ft/s	Formation Depth	
		3815.00 ft	
Formation Submergence		Pump Intake	
Total Gaseous Liquid Column HT (TVD)	-.- ft	1263.6 psi (g)	
Equivalent Gas Free Liquid HT (TVD)	-.- ft	Producing BHP	
Acoustic Test		1263.2 psi (g)	
		Static BHP	
		-.- psi (g)	



Conservation Division  
District Office No. 1  
210 E. Frontview, Suite A  
Dodge City, KS 67801



Phone: 620-225-8888  
Fax: 620-225-8885  
<http://kcc.ks.gov/>

Mark Sievers, Chairman  
Ward Loyd, Commissioner  
Thomas E. Wright, Commissioner

Sam Brownback, Governor

March 29, 2012

Loveness Mpanje  
F. G. Holl Company L.L.C.  
9431 E CENTRAL STE 100  
WICHITA, KS 67206-2563

Re: Temporary Abandonment  
API 15-145-21573-00-01  
WARD FEED YARD 'A' 1-19  
NW/4 Sec.19-21S-15W  
Pawnee County, Kansas

Dear Loveness Mpanje:

Your temporary abandonment (TA) application for the well listed above has been approved. In accordance with K.A.R. 82-3-111 the TA status of this well will expire 03/29/2013.

- \* If you return this well to service or plug it, please notify the District Office.
- \* If you sell this well you are required to file a Transfer of Operator form, T-1.
- \* If the well will remain temporarily abandoned, you must submit a new TA application, CP-111, before 03/29/2013.

You may contact me at the number below if you have questions.

Very truly yours,

Steve Pfeifer

## Summary of Changes

Lease Name and Number: WARD FEED YARD 'A' 1-19

API/Permit #: 15-145-21573-00-01

Doc ID: 1126697

Correction Number: 1

Field Name	Previous Value	New Value
Approved Date	03/29/2012	03/25/2013
Date Shut-In	10/21/2010	02/18/2011
Save Link	<a href="http://.../kcc/detail/operatorEditDetail.cfm?docID=1077409">../..kcc/detail/operatorEditDetail.cfm?docID=1077409</a>	<a href="http://.../kcc/detail/operatorEditDetail.cfm?docID=1126697">../..kcc/detail/operatorEditDetail.cfm?docID=1126697</a>

## Summary of Attachments

Lease Name and Number: WARD FEED YARD 'A' 1-19

API: 15-145-21573-00-01

Doc ID: 1126697

Correction Number: 1

Attachment Name

Fluid level

Temporary Abandonment Approved