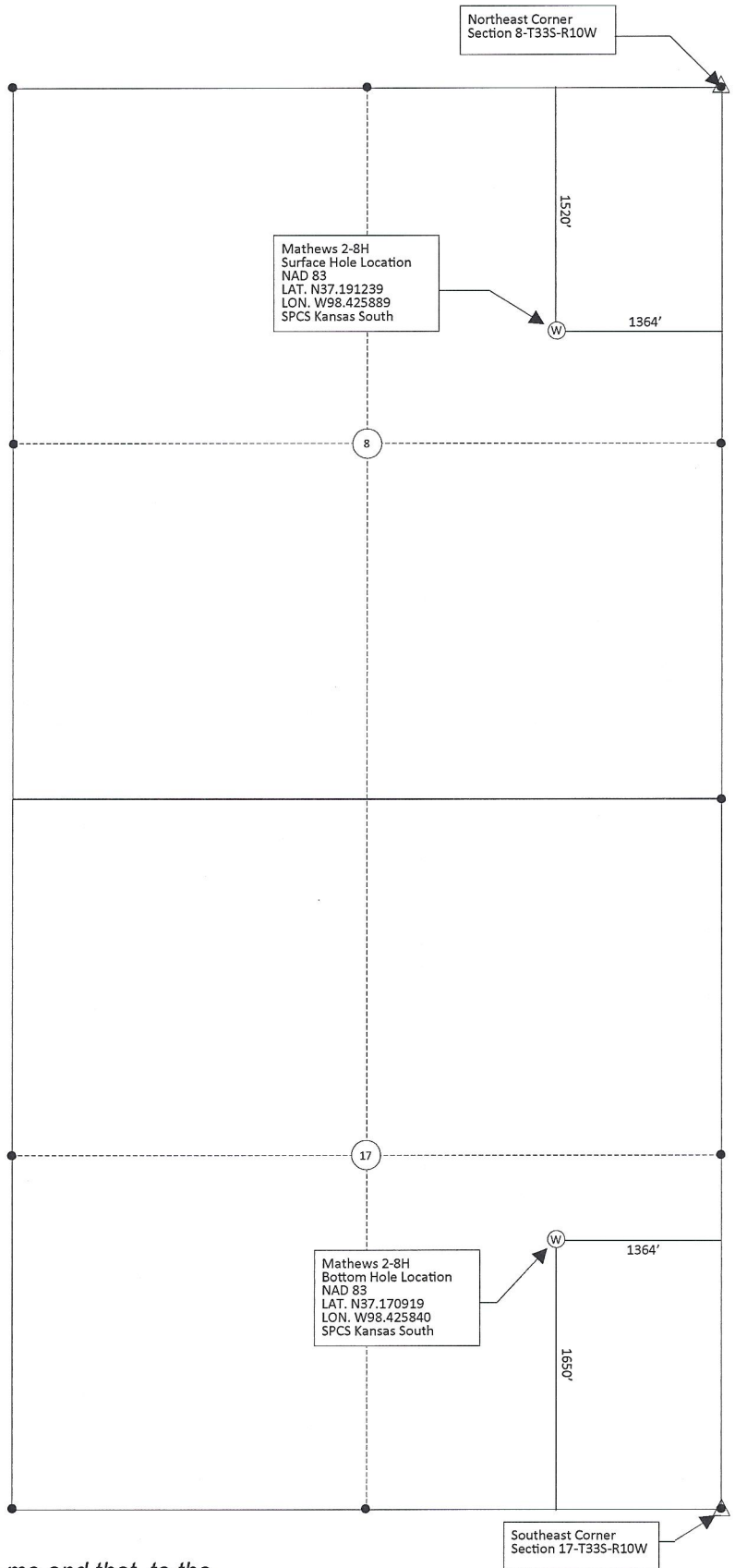




Approx. Scale in Feet: 1310



Lease Name: Mathews  
 Well No. 2-8H  
 Well loc. Co./St.: Barber County, KS  
 Well loc. Section: 8-T33S-R10W  
 Survey Datums (shown on drawing)  
 Horz. Datum NAD83  
 Kansas SPCS South Zone (US Feet)



*This is to certify that this map was made by me and that, to the best of my knowledge, is true and correct.*