

T23S, R8W, 6th P.M.

SGOMI

Well location, REFFNER 2308 #4-1HN, located as shown in the Lot 3 of Section 4, T23S, R8W, 6th P.M., Reno County, Kansas.

BASIS OF ELEVATION

SPOT ELEVATION LOCATED AT THE SW CORNER OF SECTION 18, T23S, R8W, 6th P.M. TAKEN FROM THE ALDEN SE, QUADRANGLE, KANSAS, RENO COUNTY, 7.5 MINUTE QUAD (TOPOGRAPHIC MAP) PUBLISHED BY THE UNITED STATES DEPARTMENT OF THE INTERIOR, GEOLOGICAL SURVEY, SAID ELEVATION IS MARKED AS BEING 1688 FEET.

BASIS OF BEARINGS

BASIS OF BEARINGS IS A G.P.S. OBSERVATION.

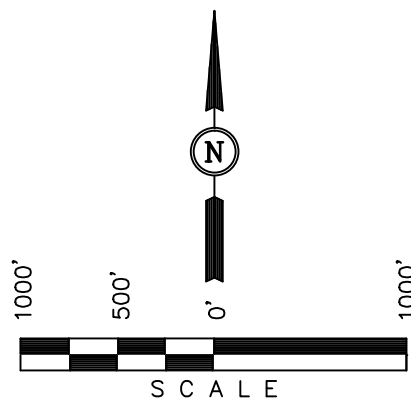
1/2" Rebar
0.5' Below Ground,
In Road
NAD 27 Kansas South
N: 522216.78
E: 2081869.88

Large Spike
0.3' Below Ground
NAD 27 Kansas South
N: 522283.84
E: 2084519.92

5/8" Rebar
0.3' Below Ground,
In Road
NAD 27 Kansas South
N: 522333.50
E: 2087162.09

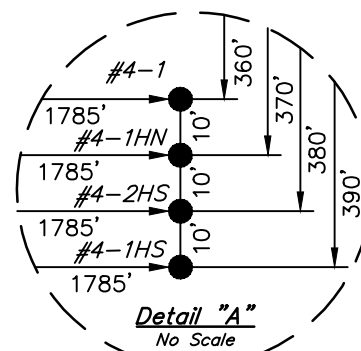
5/8" Rebar
0.5' Below Ground,
In Road
NAD 27 Kansas South
N: 521014.35
E: 2087167.76

5/8" Rebar
0.2' Below Ground
NAD 27 Kansas South
N: 519716.42
E: 2087165.85



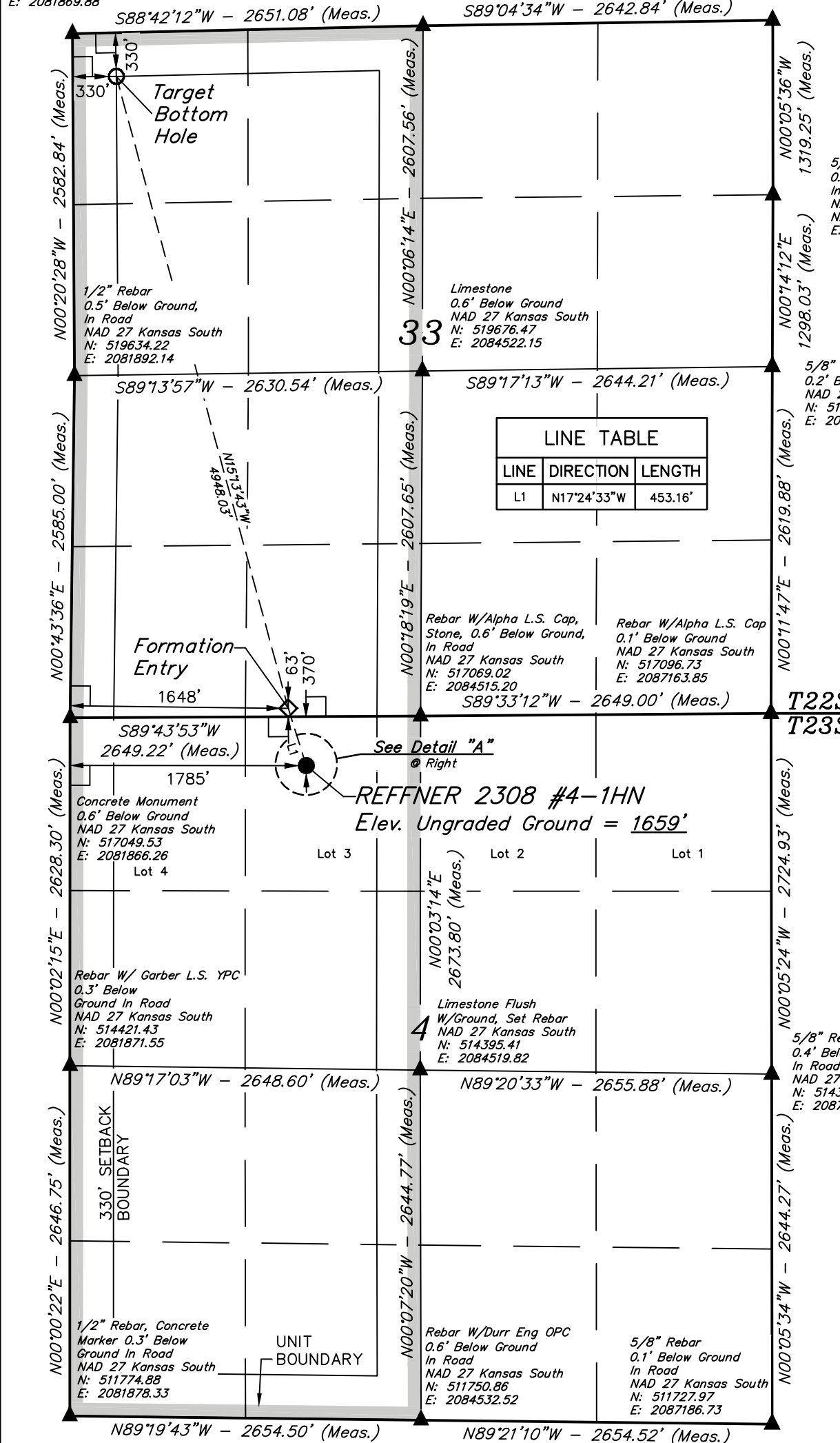
LEGEND:

- └─┘ = 90° SYMBOL
- = PROPOSED WELL HEAD.
- ▲ = SECTION CORNERS LOCATED.



| LINE TABLE | | |
|------------|-------------|---------|
| LINE | DIRECTION | LENGTH |
| L1 | N17°24'33"W | 453.16' |

REFNER 2308 #4-1HN
Elev. Ungraded Ground = 1659'



CERTIFICATE

THIS IS TO CERTIFY THAT THE ABOVE PLAT WAS PREPARED FROM FIELD NOTES OF ACTUAL SURVEYS MADE BY ME OR UNDER MY SUPERVISION AND THAT THE SAME ARE TRUE AND CORRECT TO THE BEST OF MY KNOWLEDGE AND BELIEF.

Robert Justin Pearce

REGISTERED LAND SURVEYOR
REGISTRATION NO. 1451

REVISED: 03-04-13 C.C.
REVISED: 02-21-13

STATE OF KANSAS 03-04-13

UINTAH ENGINEERING & LAND SURVEYING
85 SOUTH 200 EAST - VERNAL, UTAH 84078
(435) 789-1017

| SCALE | DATE SURVEYED: | DATE DRAWN: |
|------------------|----------------|-------------|
| 1" = 1000' | 11-28-12 | 11-30-12 |
| PARTY | REFERENCES | |
| C.B. D.W. C.A.G. | G.L.O. PLAT | |
| WEATHER | FILE | |
| COOL | SGOMI | |

| NAD 83 (#4-1HN TARGET BOTTOM HOLE) | NAD 83 (#4-1HN FORMATION ENTRY) | NAD 83 (#4-1HN SURFACE LOCATION) |
|--------------------------------------|--------------------------------------|--------------------------------------|
| LATITUDE = 38°05'58.75" (38.099653) | LATITUDE = 38°05'11.55" (38.086542) | LATITUDE = 38°05'07.27" (38.085353) |
| LONGITUDE = 98°12'52.85" (98.214681) | LONGITUDE = 98°12'36.61" (98.210169) | LONGITUDE = 98°12'34.92" (98.209700) |
| NAD 27 (#4-1HN TARGET BOTTOM HOLE) | NAD 27 (#4-1HN FORMATION ENTRY) | NAD 27 (#4-1HN SURFACE LOCATION) |
| LATITUDE = 38°05'58.71" (38.099642) | LATITUDE = 38°05'11.50" (38.086528) | LATITUDE = 38°05'07.23" (38.085342) |
| LONGITUDE = 98°12'51.62" (98.214339) | LONGITUDE = 98°12'35.39" (98.209831) | LONGITUDE = 98°12'33.70" (98.209361) |
| STATE PLANE NAD 27 (KANSAS SOUTH) | STATE PLANE NAD 27 (KANSAS SOUTH) | STATE PLANE NAD 27 (KANSAS SOUTH) |
| N: 521895.12 E: 2082202.64 | N: 517124.66 E: 2083514.97 | N: 516692.65 E: 2083651.69 |