

# Sonic Cement Bond Log

Pioneer Energy Services

API No.

15-203-20195-0000

Company Woolsey Operating Company

Well Brack No.2

Field Sand Creek Draw Pool

County Wichita State Kansas

Location 1240' FSL & 2295' FWL

NW NE SE SW

Sec: 20 Twp: 20S Rge: 35W

Other Services  
Mast Trailer

Elevation

Permanent Datum Ground Level Elevation 3184  
Log Measured From Kelly Bushing 11 Ft. Above Perm. Datum  
Drilling Measured From Kelly Bushing

K.B. 3195  
D.F. 3193  
G.L. 3184

Run Number

ONE

Date Survey

12/30/2012

Date Cementing

12/8/2012

Type Cementing Operation

Primary

Depth Driller

5860

Depth Logger

4640

Logged Interval

4639 to 3250

Casing Driller

4.5 @ TD

Float Collar - D.V. Tool

////

Squeeze Depth

////

Amount & Type Cement

////

Amount & Type Admix

////

Type Fluid In Hole

Water

Fluid Level

Full

Salinity PPM CL

////

Weight lb/gal - Vis.

////

Approx. Logged Cement Top

3450

Calculated Cement Top

////

Max. Hole Temperature

////

Tool No.

DBT 1-1

Spacing Recorded

3-5

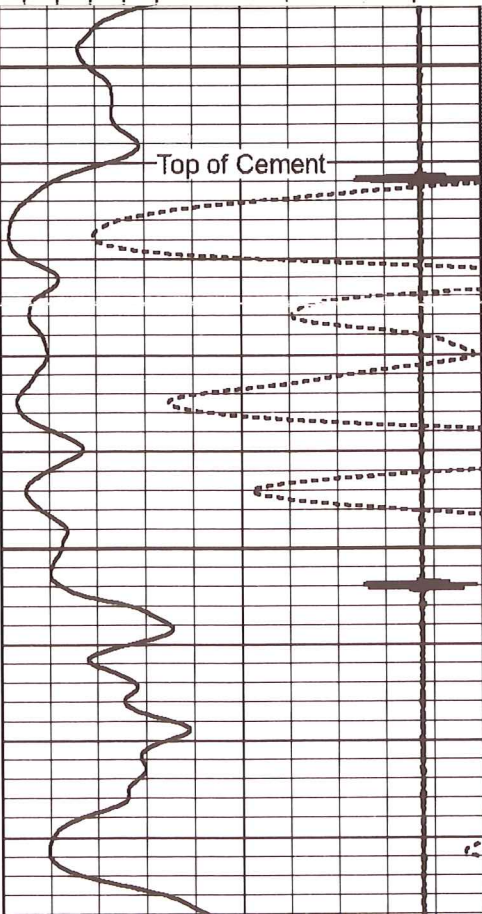
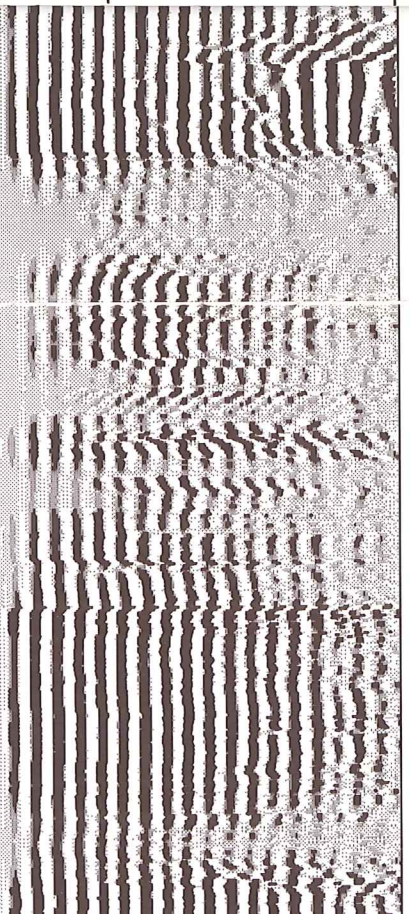
Equipment - Location

13 Pratt

Recorded By

C. Bates

J. Smith



3450

3500

