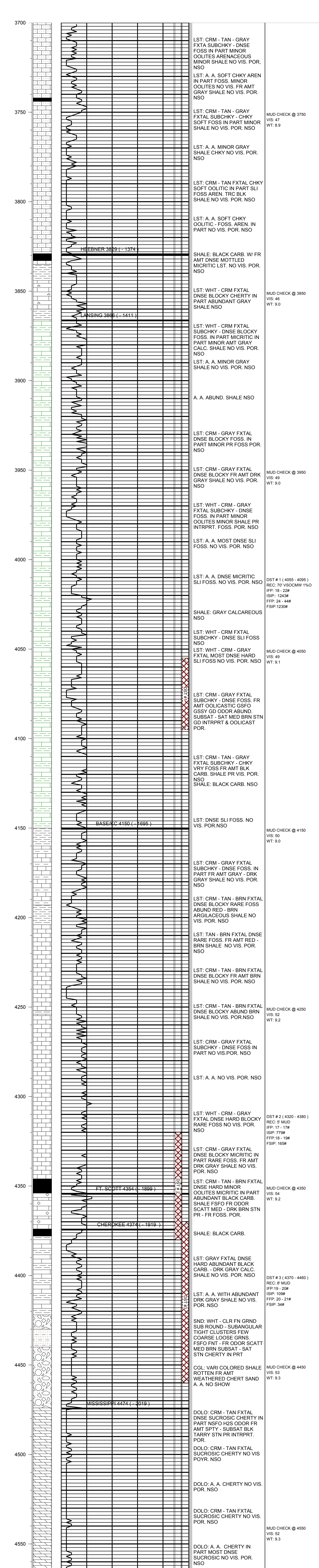


KEVIN L. KESSLER
CONSULTING PETROLEUM GEOLOGIST
 (316) 522-7338

OPERATOR : MULL DRILLING CO INC. LEASE : FEHRENBACH TRUST WELL # : 1 - 21 LOCATION : 547' FNL & 1588' FWL SEC: 21 TWP : 17 S RGE : 23 W COUNTY : NESS STATE : KANSAS		ELEVATION KB : 2455 GL : 2446 MEASUREMENTS FROM KB	
CONTRACTOR : DUKE DRILLING RIG # 4 COMM: 11 / 12 / 2012 RTD : 4570 SAMPLES SAVED FROM : 3700 GEOLOGICAL SUPERVISION FROM : 3700 MUD UP : 3600		CASING RECORD SURFACE : 8 5/8" @ 235' PRODUCTION : NONE	
COMP : 11 / 20 / 2012 LOG TD : 4571 TO: RTD TYPE MUD : CHEMICAL		ELECTRICAL SURVEYS: CDL/CNL DIL MICRO SONIC	
FORMATION	TOP LOG DATUM	SAMPLE DATUM	STRUCT. COMP.
HEEBNER	3829 -1374	3829 -1374	-07
LANSING	3866 -1411	3866 -1411	-09
BASE/KC	4150 -1695	4150 -1695	-07
FORT SCOTT	4354 -1899	4354 -1899	-09
CHEROKEE	4374 -1919	4374 -1919	-07
MISSISSIPPI	4474 -2019	4474 -2019	+13
REFERENCE WELL FOR STRUCTURAL COMPARISON : MULL DRILLING # 1 - 16 X SEC 16 - T 17 S - R 23 W NESS COUNTY KANSAS			



COMMENTS:

DUE TO NEGATIVE DST RESULTS
 THIS WELL WAS PLUGGED AS D & A

KEVIN L. KESSLER