

DORADO E&P PARTNERS, LLC
GASTON #25-10-2-1H
 LOCATED IN RENO COUNTY, KANSAS
 SECTION 2, T25S, R10W, 6th P.M.



PHOTO: VIEW OF GASTON #25-10-2-1H

CAMERA ANGLE: NORTHERLY



PHOTO: VIEW OF GASTON #25-10-2-1H FROM ROAD

CAMERA ANGLE: SOUTHERLY



- Since 1964 -

U&LS Uintah Engineering & Land Surveying
 85 South 200 East Vernal, Utah 84078
 (435) 789-1017 * FAX (435) 789-1813

LOCATION PHOTOS	03 MONTH	01 DAY	13 YEAR	PHOTO
TAKEN BY: B.L.	DRAWN BY: J.J.		REVISED: 00-00-00	

T25S, R10W, 6th P.M.

DORADO E&P PARTNERS, LLC

Well location, GASTON #25-10-2-1H, located as shown in LOT 4 of Section 2, T25S, R10W, 6th P.M., Reno County, Kansas.

BASIS OF ELEVATION

SPOT ELEVATION LOCATED AT THE SOUTHWEST CORNER OF SECTION 18, T23S, R8W, 6th P.M. TAKEN FROM THE ALDEN SE, QUADRANGLE, KANSAS, RENO COUNTY, 7.5 MINUTE QUAD (TOPOGRAPHIC MAP) PUBLISHED BY THE UNITED STATES DEPARTMENT OF THE INTERIOR, GEOLOGICAL SURVEY. SAID ELEVATION IS MARKED AS BEING 1688 FEET.

BASIS OF BEARINGS

BASIS OF BEARINGS IS A G.P.S. OBSERVATION.

Limestone, 0.8' Below Ground, Rebar, In Road (NAD 27)
 Lat: 37.926446
 Long: 98.398649
 (UTM 14 Nad 27)
 N: 13771688.60
 E: 1813812.90

5/8" Gilson LS 1278 Pin, 1.0' Below Ground, In Road (NAD 27)
 Lat: 37.926428
 Long: 98.389456
 (UTM 14 Nad 27)
 N: 13771699.14
 E: 1816463.78

Limestone, 5/8" Rebar, 1.5' Below Ground, In Road Intersection (NAD 27)
 Lat: 37.926463
 Long: 98.380257
 (UTM 14 Nad 27)
 N: 13771729.68
 E: 1819115.98

Concrete Marker, 0.2' Below Ground, In N-S Road (NAD 27)
 Lat: 37.919194
 Long: 98.380231
 (UTM 14 Nad 27)
 N: 13769083.62
 E: 1819141.30

5/8" Rebar, Gilson Cap, Limestones, 0.7' Below Ground (NAD 27)
 Lat: 37.911884
 Long: 98.380203
 (UTM 14 Nad 27)
 N: 13766422.61
 E: 1819166.83

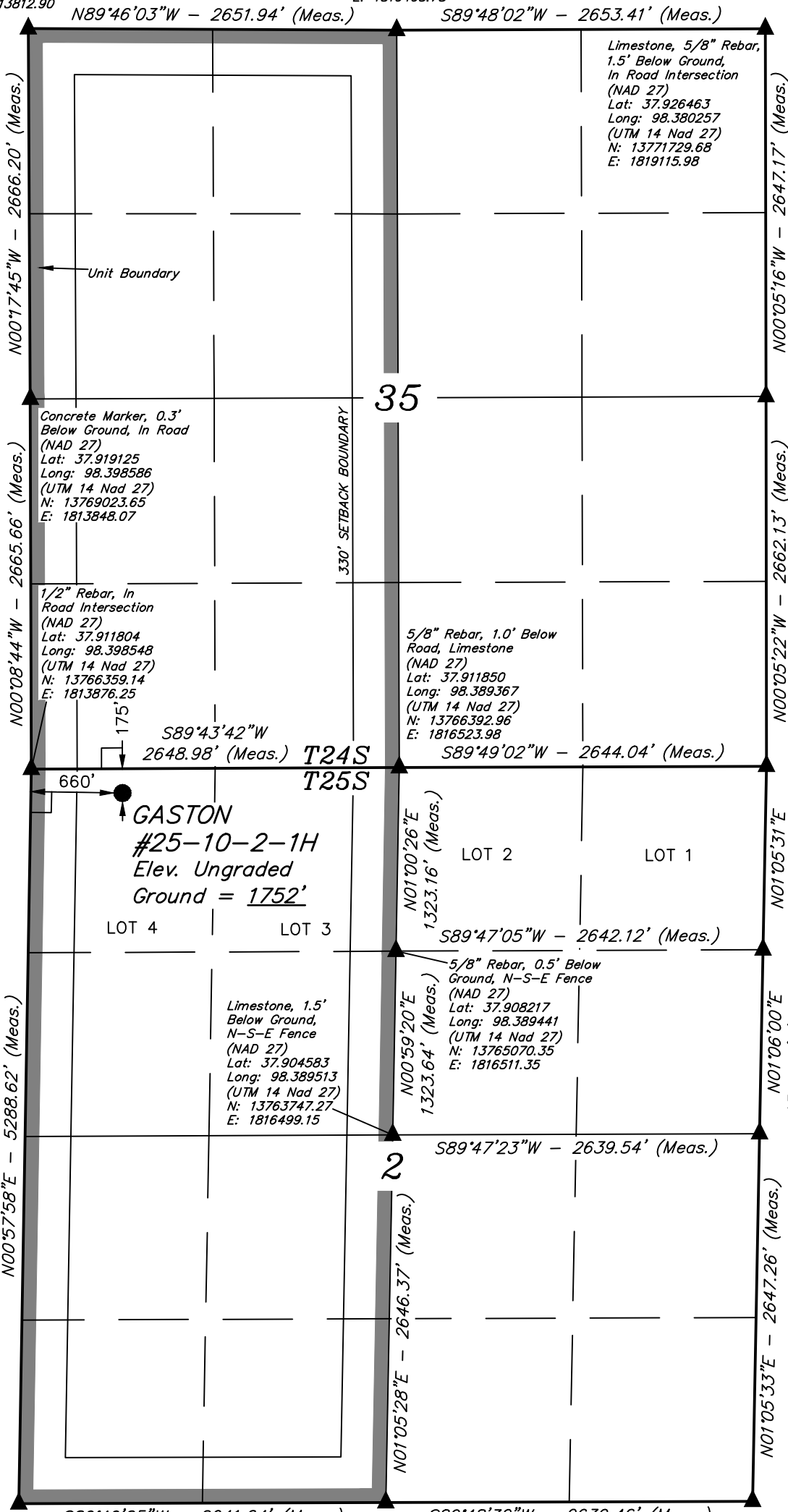
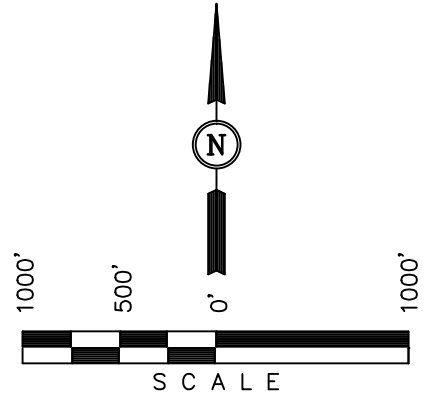
Concrete Marker, Shattered Limestone, 2.1' Below Ground, In Road (NAD 27)
 Lat: 37.908255
 Long: 98.380284
 (UTM 14 Nad 27)
 N: 13765101.48
 E: 1819152.26

5/8" Rebar, Shattered Limestone 1.4' Below Ground, In Road (NAD 27)
 Lat: 37.904620
 Long: 98.380366
 (UTM 14 Nad 27)
 N: 13763778.14
 E: 1819137.48

1/2" Rebar, 0.5' Below Road Intersection (NAD 27)
 Lat: 37.897283
 Long: 98.398828
 (UTM 14 Nad 27)
 N: 13761072.73
 E: 1813829.57

Concrete Marker, 1.7' Below Ground (NAD 27)
 Lat: 37.897316
 Long: 98.389675
 (UTM 14 Nad 27)
 N: 13761102.06
 E: 1816470.01

5/8" Rebar, 0.5' Below Ground (NAD 27)
 Lat: 37.897351
 Long: 98.380528
 (UTM 14 Nad 27)
 N: 13761132.03
 E: 1819108.28



CERTIFICATE

THIS IS TO CERTIFY THAT THE ABOVE PLAT WAS PREPARED FROM FIELD NOTES OF ACTUAL SURVEYS MADE BY ME OR UNDER MY SUPERVISION AND THAT THE SAME ARE TRUE AND CORRECT TO THE BEST OF MY KNOWLEDGE AND BELIEF.

Justin S. ...
 REGISTERED LAND SURVEYOR
 REGISTRATION NO. 1451
 STATE OF KANSAS

UINTAH ENGINEERING & LAND SURVEYING
 85 SOUTH 200 EAST - VERNAL, UTAH 84078
 (435) 789-1017

LEGEND:
 L-shaped symbol = 90° SYMBOL
 ● = PROPOSED WELL HEAD.
 ▲ = SECTION CORNERS LOCATED.

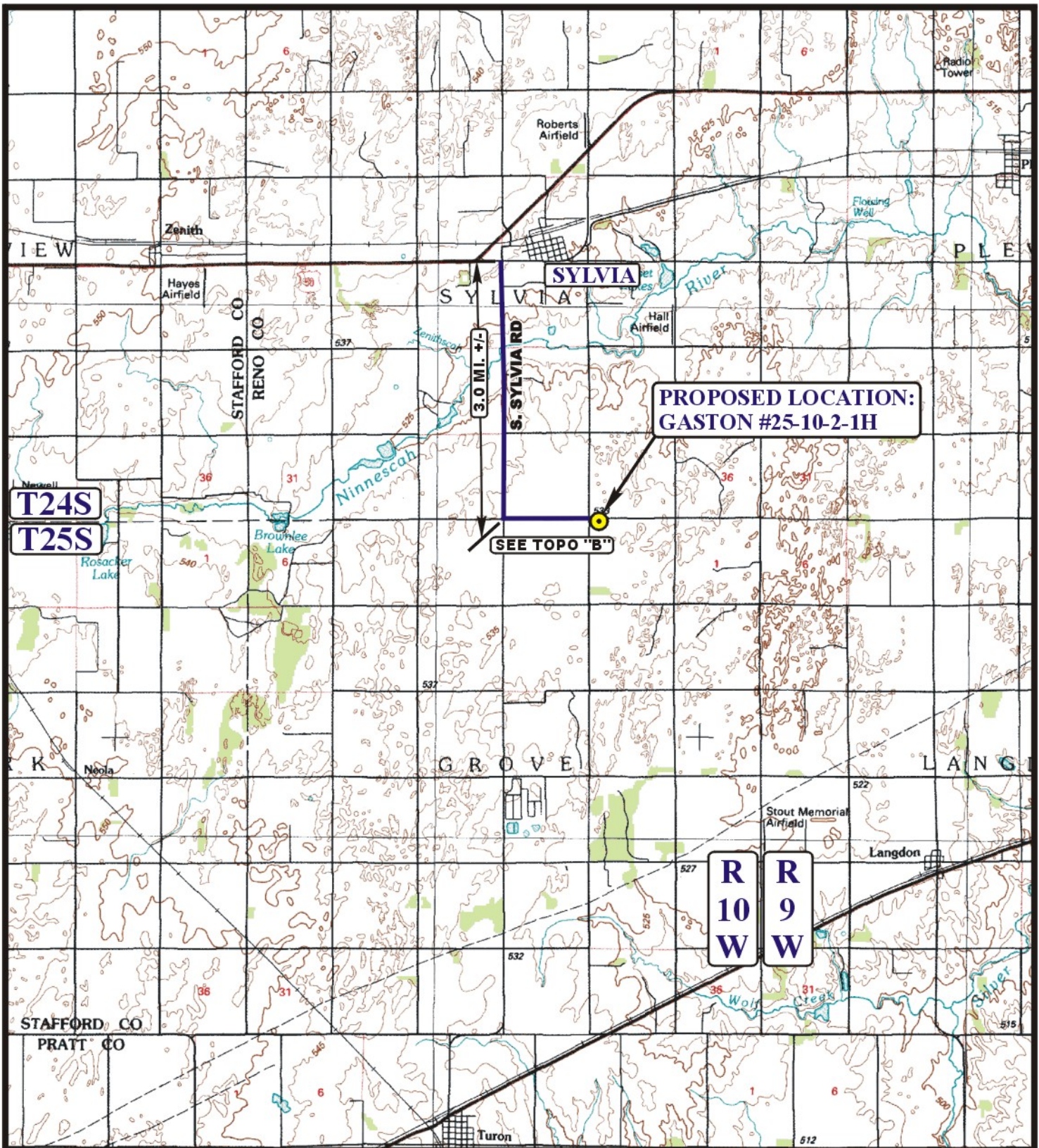
NAD 83 (SURFACE LOCATION)
LATITUDE = 37°54'40.86" (37.911350)
LONGITUDE = 98°23'47.83" (98.396619)
NAD 27 (SURFACE LOCATION)
LATITUDE = 37°54'40.81" (37.911336)
LONGITUDE = 98°23'46.57" (98.396269)
UTM ZONE 14 NAD 27
N: 13766192.59 E: 1814534.54

SCALE 1" = 1000'	DATE SURVEYED: 02-28-13	DATE DRAWN: 03-01-13
PARTY B.L. D.W. J.J.	REFERENCES G.L.O. PLAT	
WEATHER COOL	FILE DORADO E&P PARTNERS, LLC	

DORADO E&P PARTNERS, LLC
GASTON #25-10-2-1H
SECTION 2, T25S, R10W, 6th P.M.

BEGINNING AT THE INTERSECTION OF W. LONGVIEW ROAD AND S. SYLVIA ROAD NEAR SYLVIA, KANSAS PROCEED IN A SOUTHERLY DIRECTION ALONG S. SYLVIA ROAD APPROXIMATELY 3.0 MILES TO THE JUNCTION OF THIS ROAD AND W. LAKE CABLE ROAD THE EAST; TURN LEFT AND PROCEED IN AN EASTERLY DIRECTION 1.1 MILES TO THE PROPOSED LOCATION.

TOTAL DISTANCE FROM SYLVIA, KANSAS TO THE PROPOSED LOCATION IS APPROXIMATELY 4.1 MILES.



**PROPOSED LOCATION:
GASTON #25-10-2-1H**

SEE TOPO "B"

3.0 MI. +/-

SYLVIA

S. SYLVIA RD

**T24S
T25S**

**R
10
W**

**R
9
W**

LEGEND:

PROPOSED LOCATION



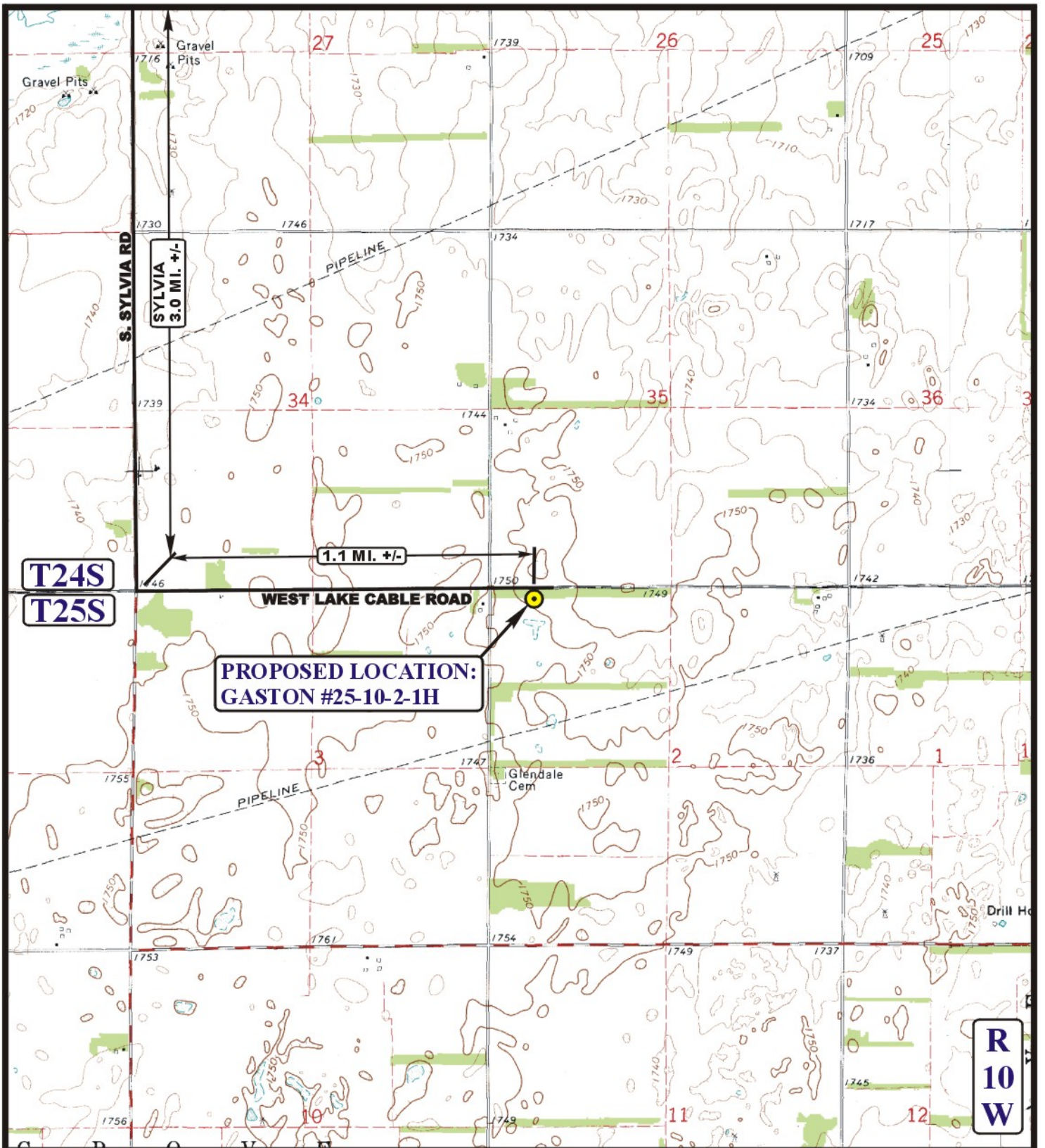
DORADO E&P PARTNERS, LLC

**GASTON #25-10-2-1H
SECTION 2, T25S, R10W, 6th P.M.
175' FNL 660' FWL**



Uintah Engineering & Land Surveying
85 South 200 East Vernal, Utah 84078
(435) 789-1017 * FAX (435) 789-1813

ACCESS ROAD MAP	03 MONTH	01 DAY	13 YEAR	
SCALE: 1:100,000	DRAWN BY: JJ.		REVISED: 00-00-00	



LEGEND:

————— EXISTING ROAD

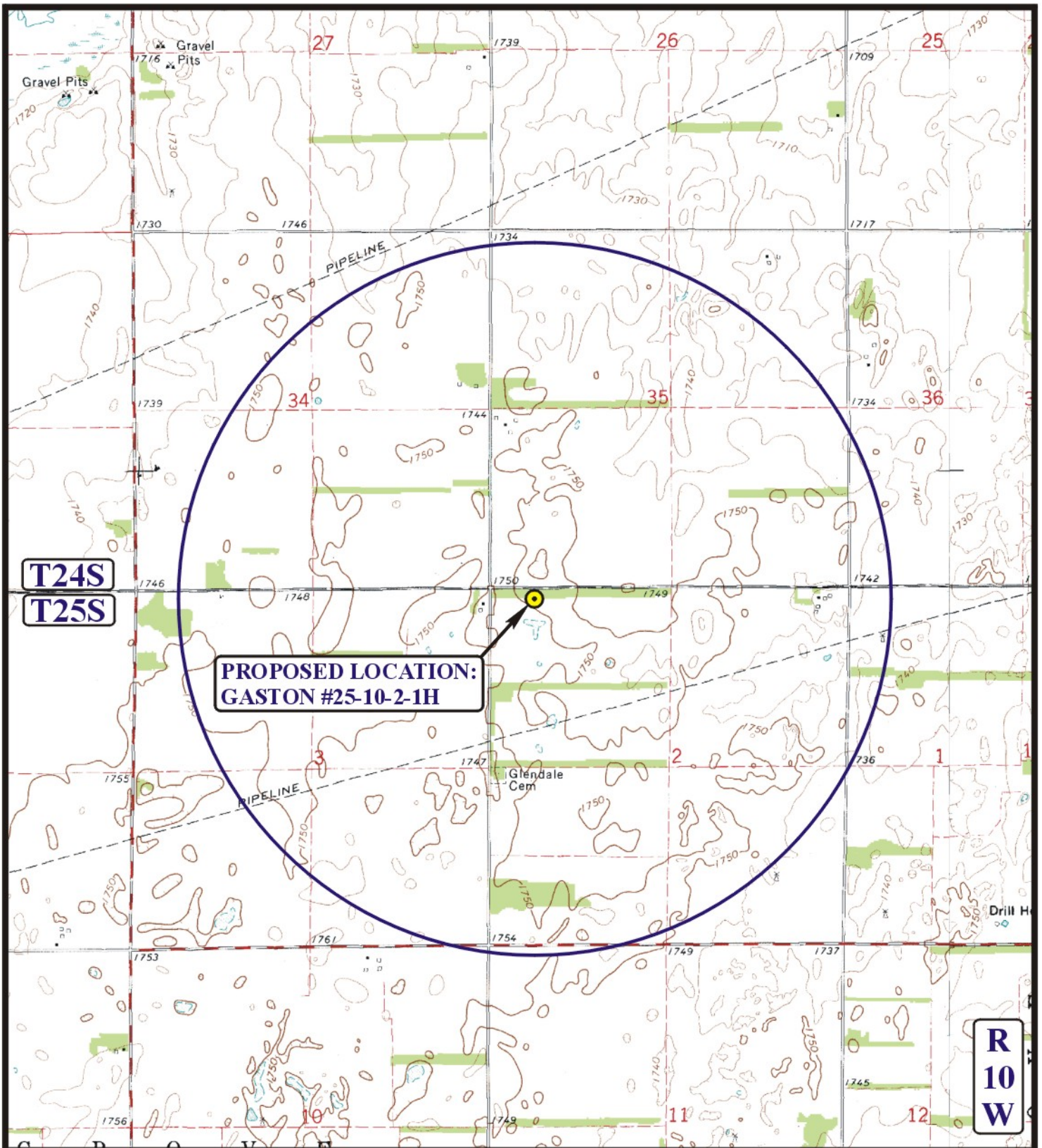
DORADO E&P PARTNERS, LLC

GASTON #25-10-2-1H
SECTION 2, T25S, R10W, 6th P.M.
175' FNL 660' FWL



Utah Engineering & Land Surveying
85 South 200 East Vernal, Utah 84078
(435) 789-1017 * FAX (435) 789-1813

ACCESS ROAD MAP	03	01	13	B TOPO
	MONTH	DAY	YEAR	
SCALE: 1" = 2000'	DRAWN BY: JJ.		REVISED: 00-00-00	



**PROPOSED LOCATION:
GASTON #25-10-2-1H**

**T24S
T25S**

**R
10
W**

LEGEND:

- ⊗ DISPOSAL WELLS
- PRODUCING WELLS
- ⬮ SHUT IN WELLS
- ⬮ ABANDONED WELLS
- ⬮ TEMPORARILY ABANDONED

DORADO E&P PARTNERS, LLC

**GASTON #25-10-2-1H
SECTION 2, T25S, R10W, 6th P.M.
175' FNL 660' FWL**



Uintah Engineering & Land Surveying
85 South 200 East Vernal, Utah 84078
(435) 789-1017 * FAX (435) 789-1813



TOPOGRAPHIC MAP 03 01 13
MONTH DAY YEAR
SCALE: 1" = 2000' DRAWN BY: J.J. REVISED: 00-00-00

