

COMPENSATED DENSITY LOG

FILING NO.
COMPANY LANDERS & MCGROVE
WELL HANAHAN NO. 1
FIELD WILDGAT
COUNTY COMLEY **STATE** KANSAS
Location: SE NW SE
Sec. L3 **Top.** 35S **Rge.** 6E
Other Services: HRL
Permanent Datum: GL
Log Measured From: KB, 7 Ft. Above Perm. Datum
Drilling Measured From: KB
Date: 1-4-78
Run No.: ORE
Type Log: GAMMA-GAMMA
Depth—Driller: 2916
Depth—Logger: 2915
Bottom logged interval: 2914
Top logged interval: 1933
Type fluid in hole: GEL
Salinity, PPM Cl: ---
Density: 9.3# VIS 48
Level: FILL
Max rec. temp., deg F. 111
Operating rig time: 1 1/2 HOURS
Recorded by: SHAY
Witnessed by: MR. LANDERS MR. MCGROVE

Run No.	Bore-Hole Record				Coating Record			
	Bit	From	To	Size	Wgt.	From	To	
1	7 7/8	155	2916	8 5/8	---	SURFACE	---	

FOLD HERE THIS HEADING AND LOG CONFORMS TO API RP 33

Run No.	Tool No.	Source No.	Panel No.	Logging Unit	Location

Run No.	Gamma Ray			C D T					
	API Scale	Background CPS	Std. CPS	Ds CPS AT	2.0	3.0	Dl CPS AT	2.0	3.0

Run No.	Depths		Speed Ft/Min	GR TC
	From	To		

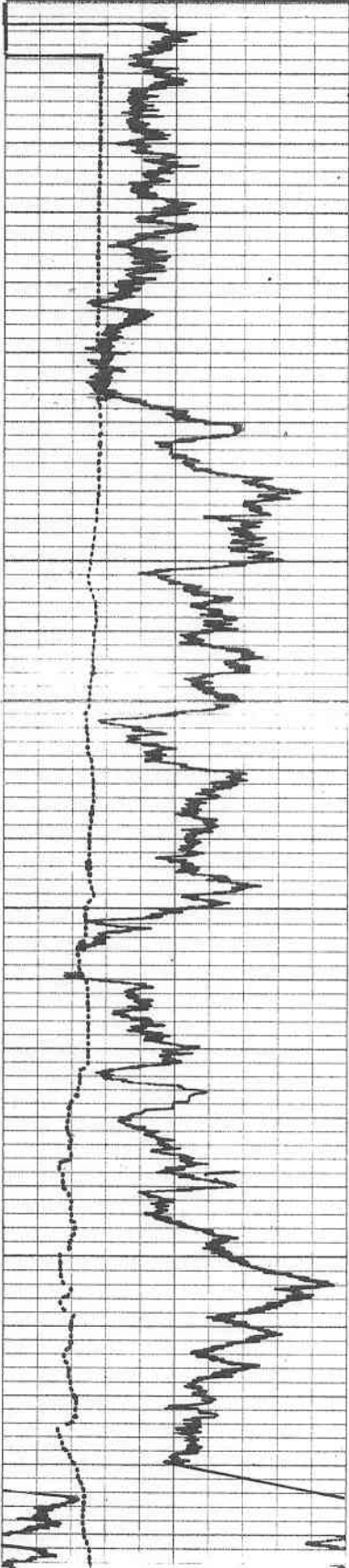
Remarks:

GAMMA RAY API UNITS 0 120	DEPTHS	BULK DENSITY GRAMS/CC
		POROSITY SCALE 20 10 0

HOLE SIZE - INCHES
6 16

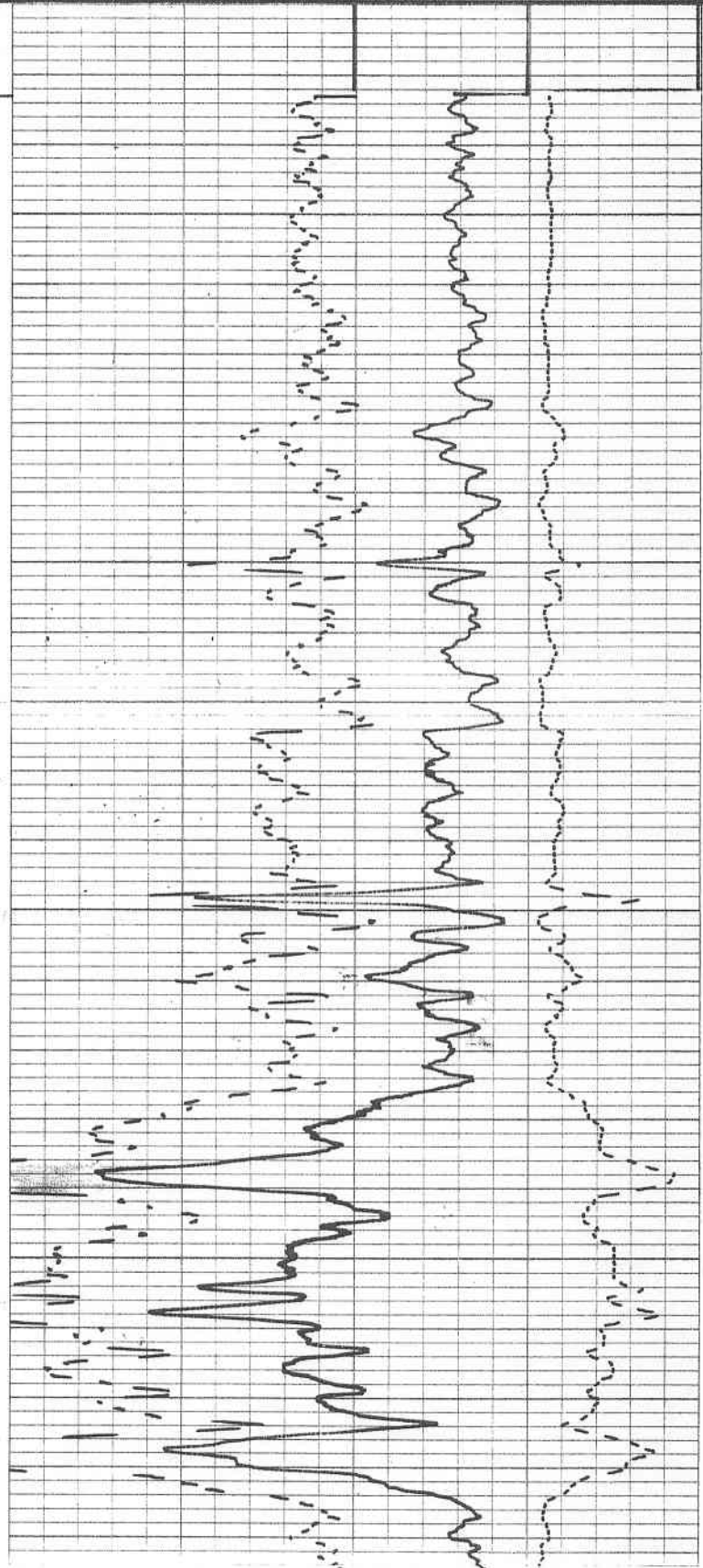
MATRIX DENSITY 2.68

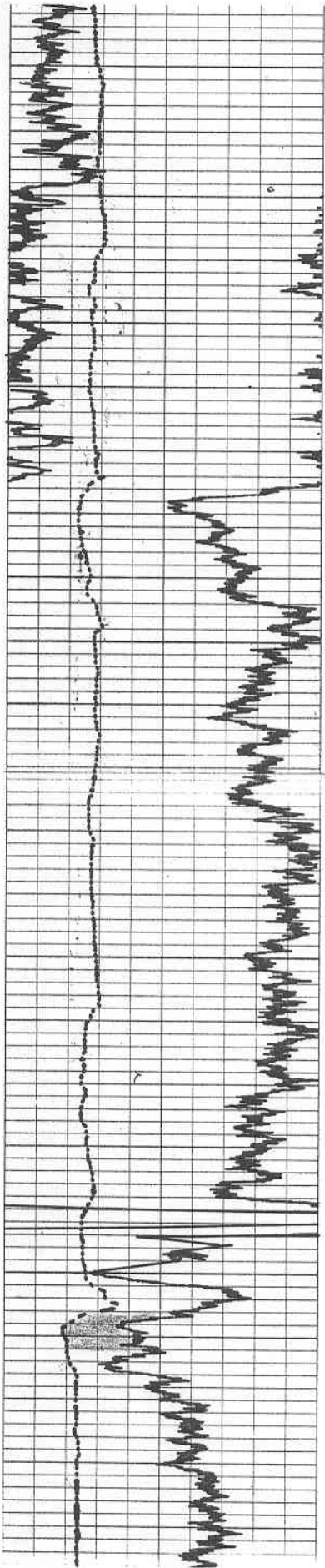
CORRECTION
- .25 0 + .25



2000

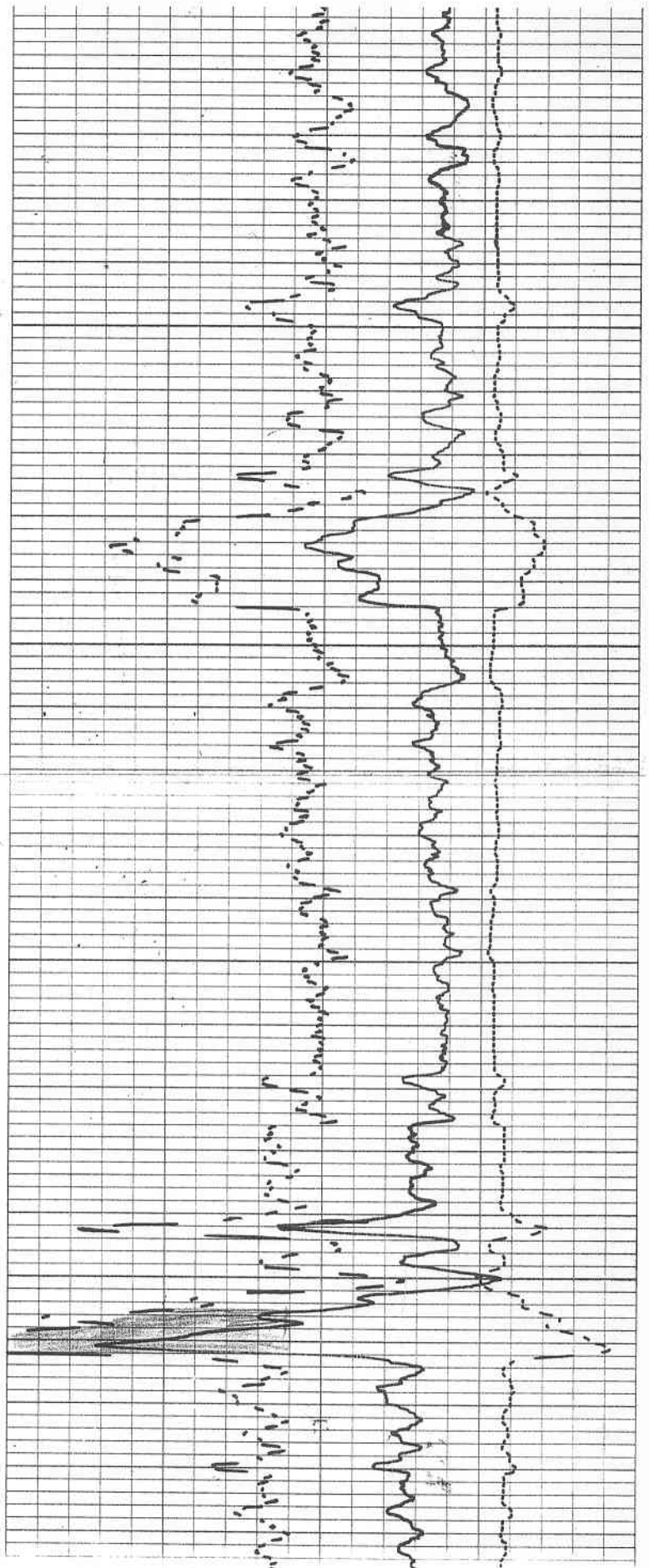
2100

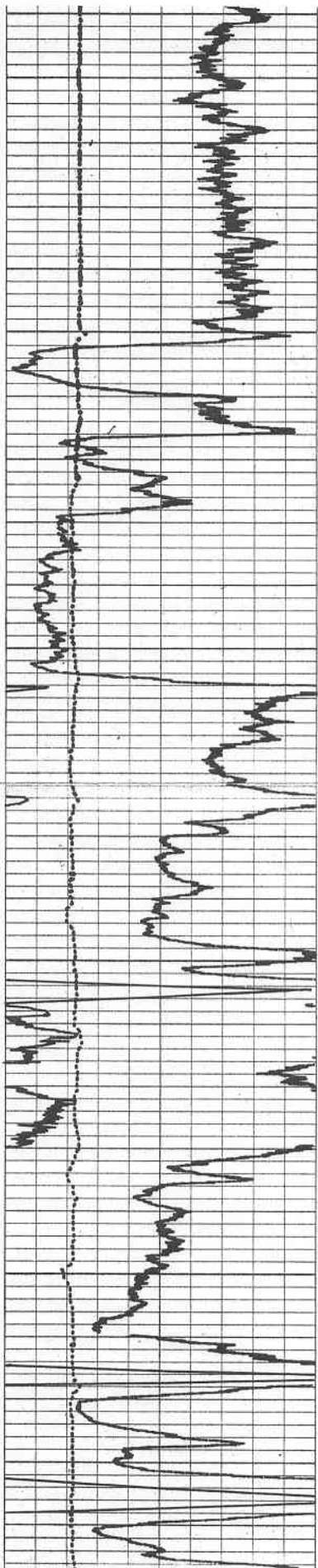




2200

2300

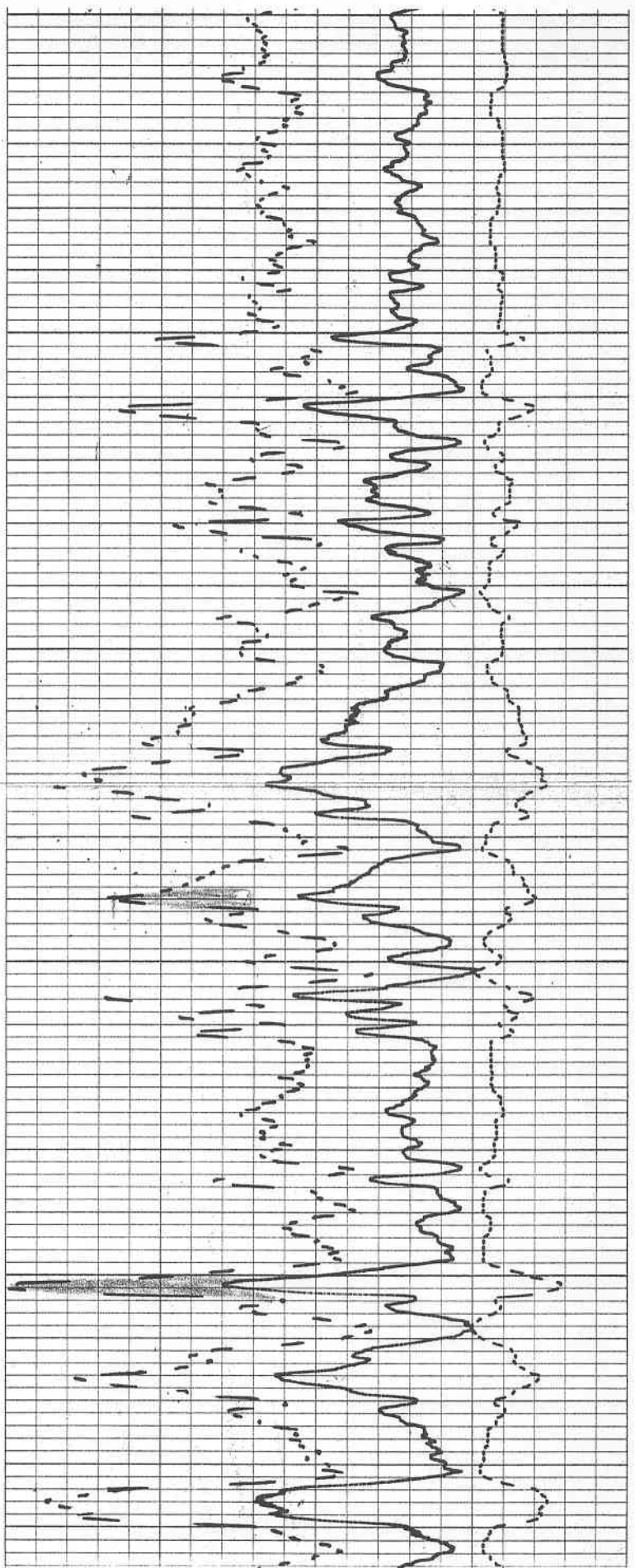


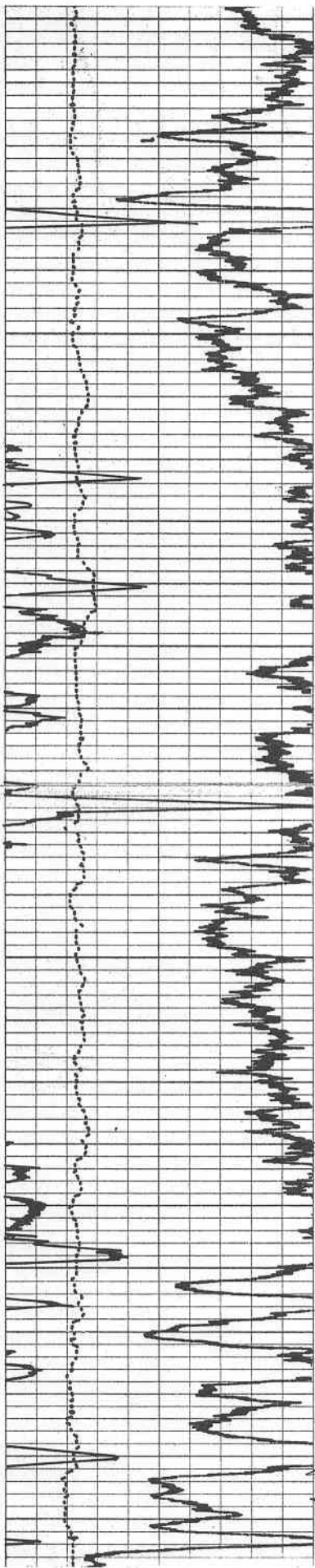


2400

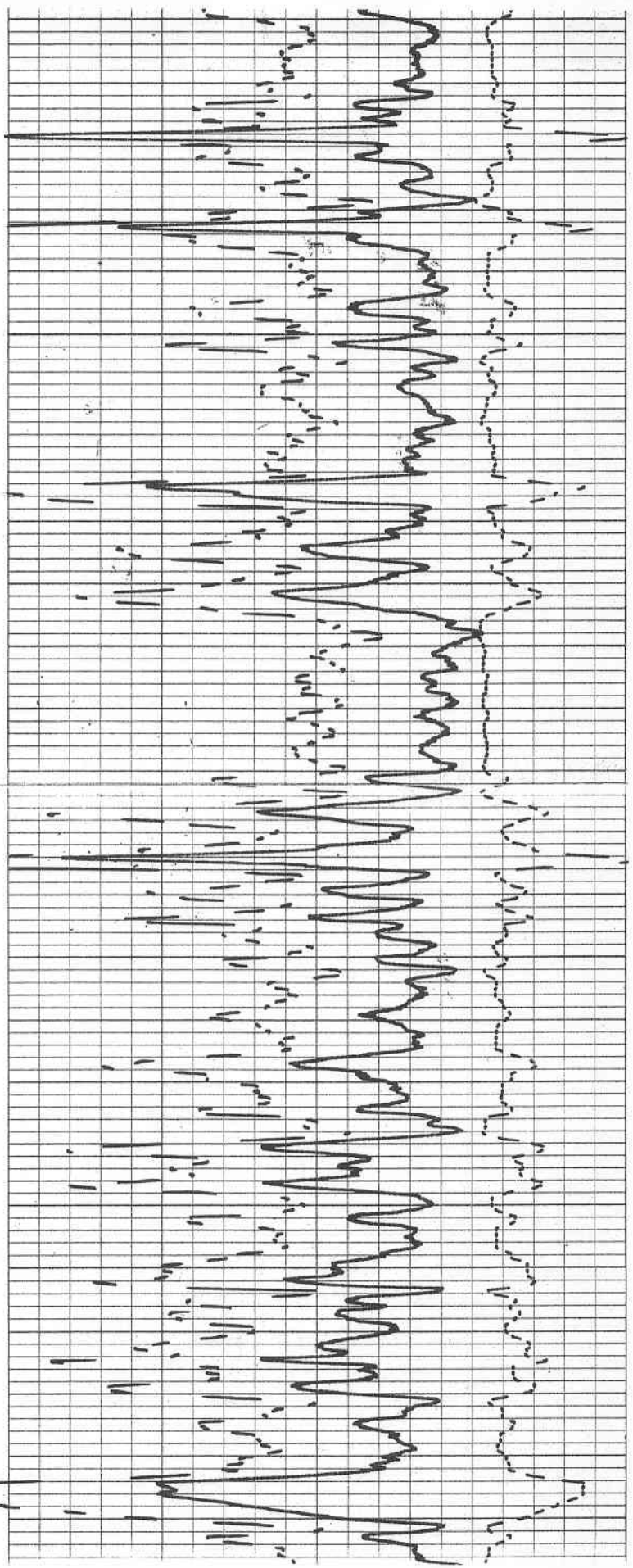
2500

2600






2700



2800

		2900		
6 HOLE SIZE - INCHES 16 CALIPER		2.0 2.5 3.0 20 10 0 POROSITY SCALE	MATRIX DENSITY 2.68 - .25 0 + .25 CORRECTION	
GAMMA RAY API UNITS 0 120			BULK DENSITY GRAMS/CC	
Company LANDERS & MUSGROVE Well HANAHAN NO. 1 Field WILDCAT County COWLEY State KANSAS		DEPTHS	Drillers T.D. 2916 F.R. 2914 T.D. 2915 Elevations: K.B. 1214 D.F. 1212 G.L. 1207	