



TRILOBITE TESTING, INC.

DRILL STEM TEST REPORT

Samuel Gary Jr. & Associates

30-14s-17w-Ellis

1515 Wynkoop
Suite 700
Denver, CO. 80202
ATTN: Chris Mitchell

Grabbe Trust #1-30

Job Ticket: 48735 **DST#: 1**

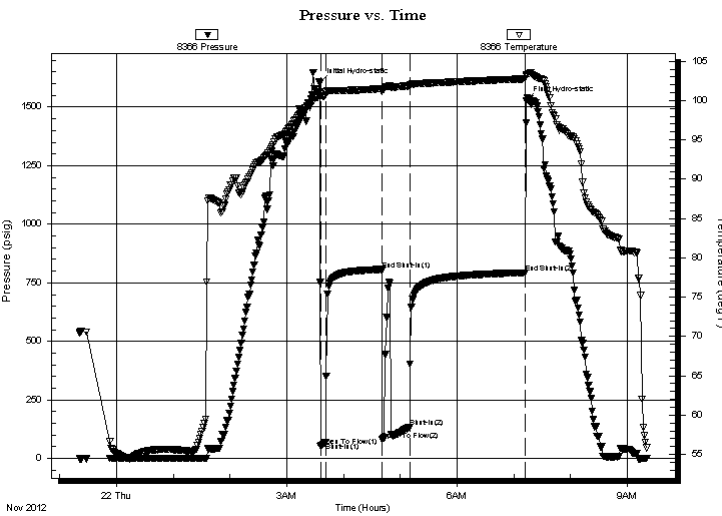
Test Start: 2012.11.21 @ 23:20:52

GENERAL INFORMATION:

Formation: **A-D**
 Deviated: No Whipstock: 0.00 ft (KB)
 Time Tool Opened: 03:35:37
 Time Test Ended: 09:21:07
 Interval: **3214.00 ft (KB) To 3290.00 ft (KB) (TVD)**
 Total Depth: 3290.00 ft (KB) (TVD)
 Hole Diameter: 7.80 inches Hole Condition: Good
 Test Type: Conventional Bottom Hole (Initial)
 Tester: Jason McLemore
 Unit No: 54
 Reference Elevations: 1946.00 ft (KB)
 1936.00 ft (CF)
 KB to GR/CF: 10.00 ft

Serial #: 8366 Inside
 Press @ Run Depth: 133.40 psig @ 3282.00 ft (KB) Capacity: 8000.00 psig
 Start Date: 2012.11.21 End Date: 2012.11.22 Last Calib.: 2012.11.22
 Start Time: 23:20:54 End Time: 09:21:07 Time On Btm: 2012.11.22 @ 03:34:52
 Time Off Btm: 2012.11.22 @ 07:13:07

TEST COMMENT: IFP-Weak Blow , Built to 3"
 ISI-Dead
 FFP-Good Blow , BOB in 30 Min
 FSI-Dead



PRESSURE SUMMARY

Time (Min.)	Pressure (psig)	Temp (deg F)	Annotation
0	1602.71	101.11	Initial Hydro-static
1	53.83	100.60	Open To Flow (1)
7	69.98	100.76	Shut-In(1)
66	806.97	101.52	End Shut-In(1)
66	80.02	101.14	Open To Flow (2)
95	133.40	101.87	Shut-In(2)
218	793.12	102.76	End Shut-In(2)
219	1526.18	103.23	Final Hydro-static

Recovery

Length (ft)	Description	Volume (bbl)
165.00	Muddy Water-70%W-30%M	2.31

Gas Rates

Choke (inches)	Pressure (psig)	Gas Rate (Mcf/d)



**TRILOBITE
TESTING, INC.**

DRILL STEM TEST REPORT

FLUID SUMMARY

Samuel Gary Jr. & Associates

30-14s-17w-Ellis

1515 Wynkoop
Suite 700
Denver, CO. 80202
ATTN: Chris Mitchell

Grabbe Trust #1-30

Job Ticket: 48735 **DST#: 1**

Test Start: 2012.11.21 @ 23:20:52

Mud and Cushion Information

Mud Type: Gel Chem	Cushion Type:	Oil API:	deg API
Mud Weight: 9.00 lb/gal	Cushion Length: ft	Water Salinity:	16000 ppm
Viscosity: 54.00 sec/qt	Cushion Volume: bbl		
Water Loss: 6.40 in ³	Gas Cushion Type:		
Resistivity: ohm.m	Gas Cushion Pressure: psig		
Salinity: 4400.00 ppm			
Filter Cake: inches			

Recovery Information

Recovery Table

Length ft	Description	Volume bbl
165.00	Muddy Water-70%W-30%M	2.315

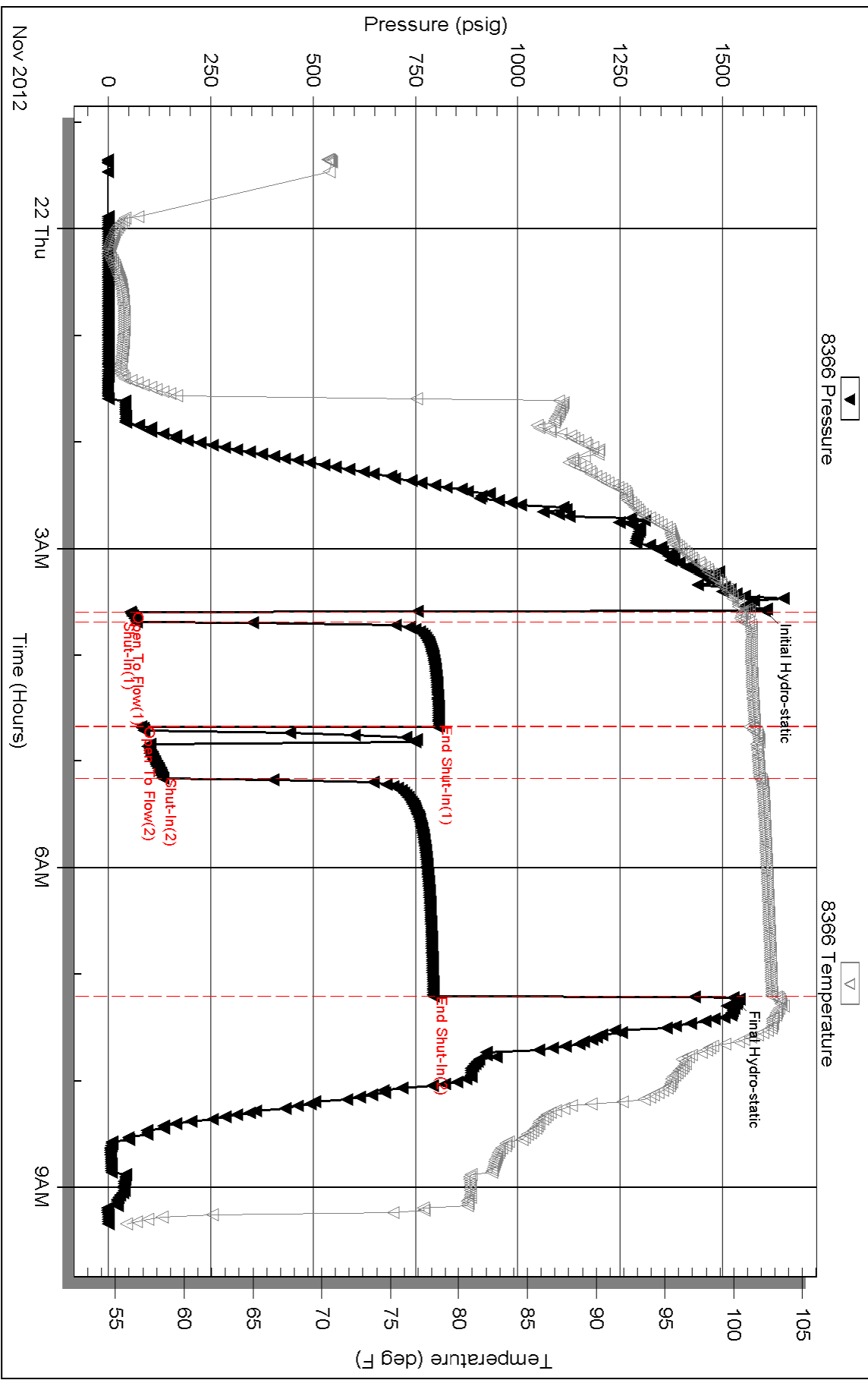
Total Length: 165.00 ft Total Volume: 2.315 bbl

Num Fluid Samples: 0 Num Gas Bombs: 0 Serial #:

Laboratory Name: Laboratory Location:

Recovery Comments: Sampler-45#,3000ml Muddy Water

Pressure vs. Time



Serial #: 8789

Fluid

Samuel Gary Jr. & Associates

Grabbe Trust #1-30

DST Test Number: 1

