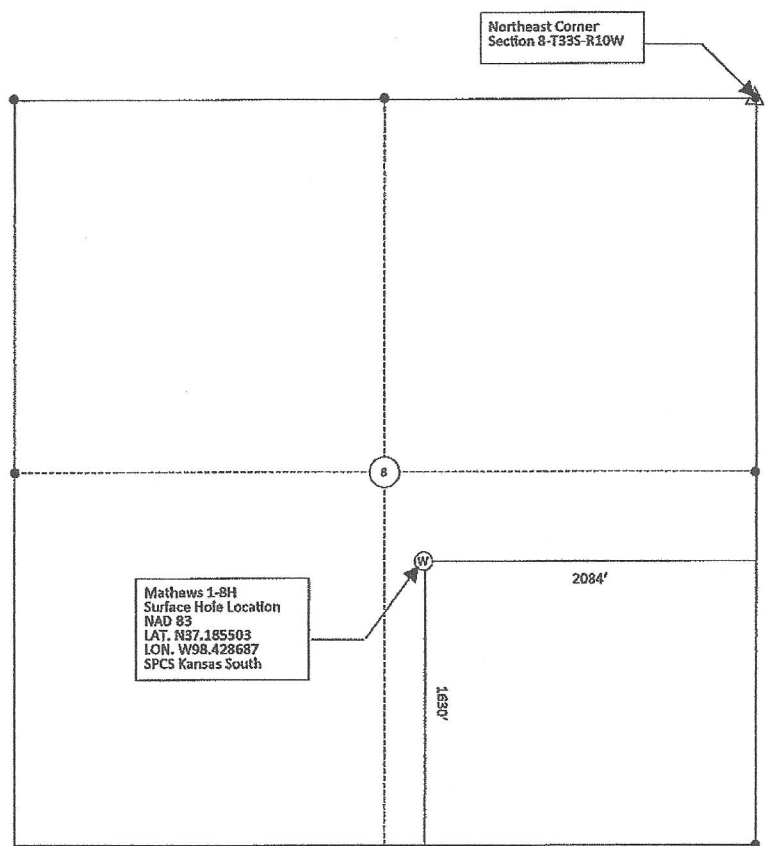


Approx. Scale in Feet: 1310



Northeast Corner
Section 8-T33S-R10W

Mathews 1-8H
Surface Hole Location
NAD 83
LAT. N37.185503
LON. W98.428687
SPCS Kansas South

Lease Name: Mathews
Well No. 1-8H
Well loc. Co./St.: Barber County, KS
Well loc. Section: 8-T33S-R10W
Survey Datums (shown on drawing)
Horz. Datum NAD83
Kansas SPCS South Zone (US Feet)

This is to certify that this map was made by me and that, to the best of my knowledge, is true and correct.