

## GEOLOGICAL REPORT DRILLING TIME AND SAMPLE LOG

COMPANY Baird Oil Company, LLC  
 LEASE Hansen #2-26  
 FIELD Wildcat  
 LOCATION 360'FN1 & 530'FEL  
 SEC 26 TWSP 7s RGE 20W  
 COUNTY Rooks STATE Kansas

ELEVATION

KB 2019'  
 DF 2017'  
 GL 2014'  
 Depths Measured From  
 Log KB Drilling KB

CONTRACTOR WWD Drilling Rig #4  
 SPUD 8-10-07 COMP 8-16-07  
 SAMPLES SAVED FROM 2900' TO RTD

CASING

Surface 8 5/8" @ 209'  
 Production 5 1/2"

ELECTRIC LOGS

Superior Well services

### FORMATION TOPS AND STRUCTURAL POSITION

FORMATION	SAMPLE	E. LOG	DATUM <i>E. log</i>	A	B	C	D
				●			
<u>Anhydrite</u>	<u>1525</u>	<u>1523</u>	<u>+496</u>	<u>+477</u>			
<u>Base Anhydrite</u>	<u>1559</u>	<u>1556</u>	<u>+463</u>	<u>+442</u>			
<u>Topeka</u>	<u>2990</u>	<u>2990</u>	<u>-971</u>	<u>-965</u>			
<u>Heebner</u>	<u>3191</u>	<u>3191</u>	<u>-1172</u>	<u>-1167</u>			
<u>Toronto</u>	<u>3213</u>	<u>3213</u>	<u>-1194</u>	<u>-1190</u>			
<u>Lansing</u>	<u>3229</u>	<u>3229</u>	<u>-1210</u>	<u>-1205</u>			
<u>Base Kansas City</u>	<u>3443</u>	<u>3443</u>	<u>-1424</u>	<u>-1416</u>			
<u>Marmaton</u>	<u>3472</u>	<u>3472</u>	<u>-1453</u>	<u>-1441</u>			
<u>Arbuckle</u>	<u>3486</u>	<u>3486</u>	<u>-1467</u>	<u>-1454</u>			
<u>Total Depth</u>	<u>3504</u>	<u>3504</u>	<u>-1485</u>	<u>-1501</u>			

### REFERENCE WELLS

A Baird Oil Company, Hansen #1-26, 1220'FN1 & 1390'FEL 26-7s-20  
 B  
 C  
 D

REMARKS

This well ran 5 feet lower on the lensing top than the nearby reference well. Due to the low structural position and negative DST data it was determined that 5 1/2" production casing would be cemented for saltwater disposal into the Cedar Hills Sandstone.

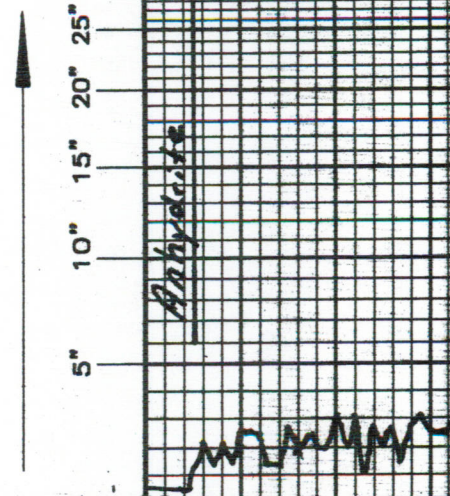
Richard B. Bell  
8-17-07

LEGEND

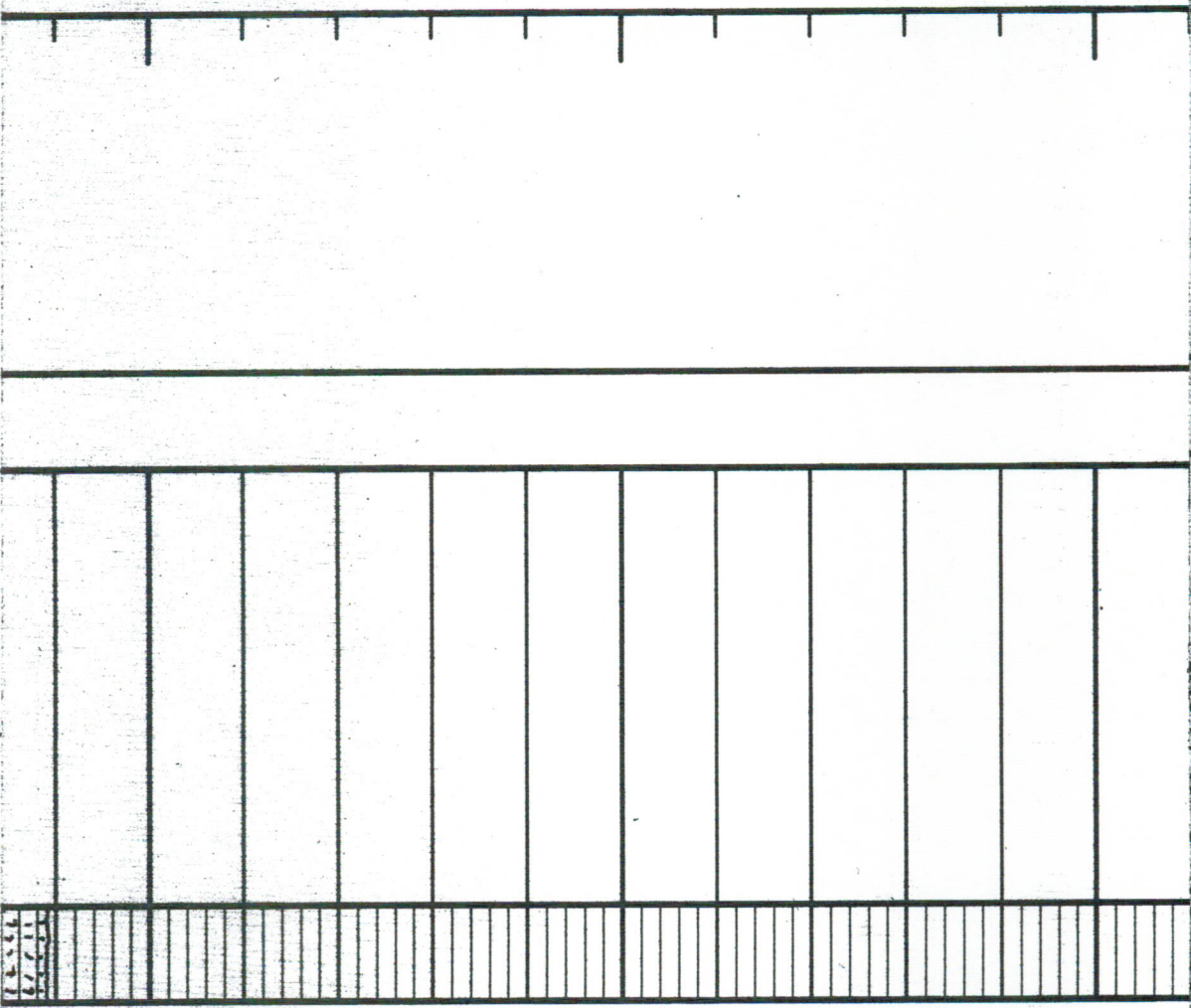
- Anhydrite
- Salt
- Sandstone
- Shale
- Carb sh
- Limestone
- Ool.Lime
- Chert
- Dolomite

DEPTH	LITHOLOGY	SAMPLE DESCRIPTIONS	REMARKS
5" 10" 15" 20" 25"	Anhydrite		
1520			
40			

DRILLING TIME IN MINUTES  
PER FOOT  
Rate of Penetration Decreases



LOG // 10



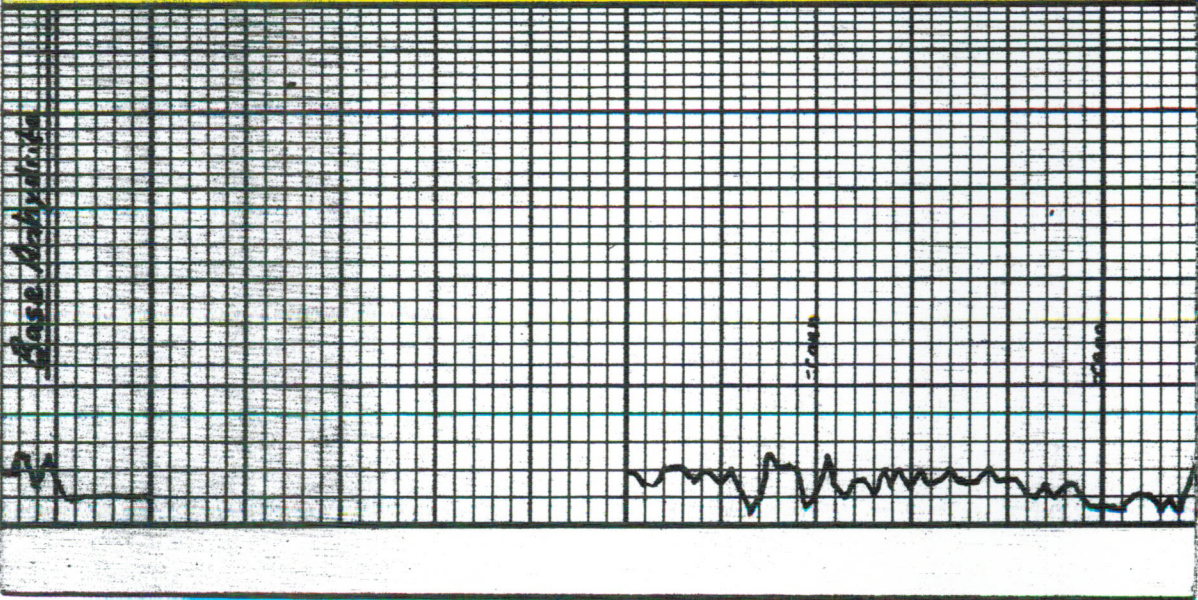
60

2700

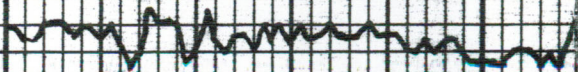
20

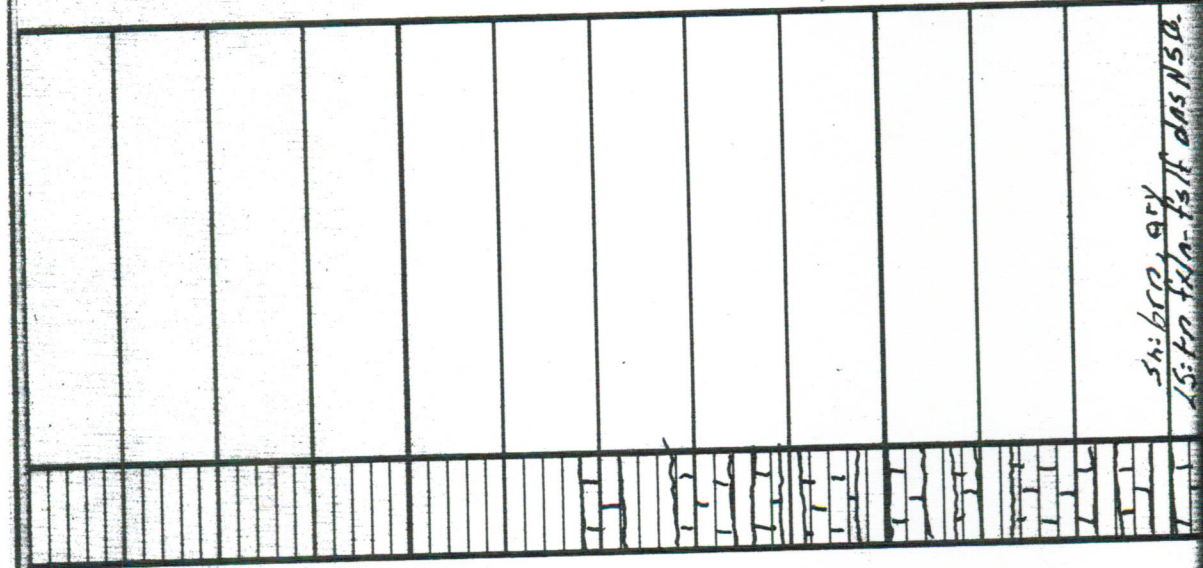
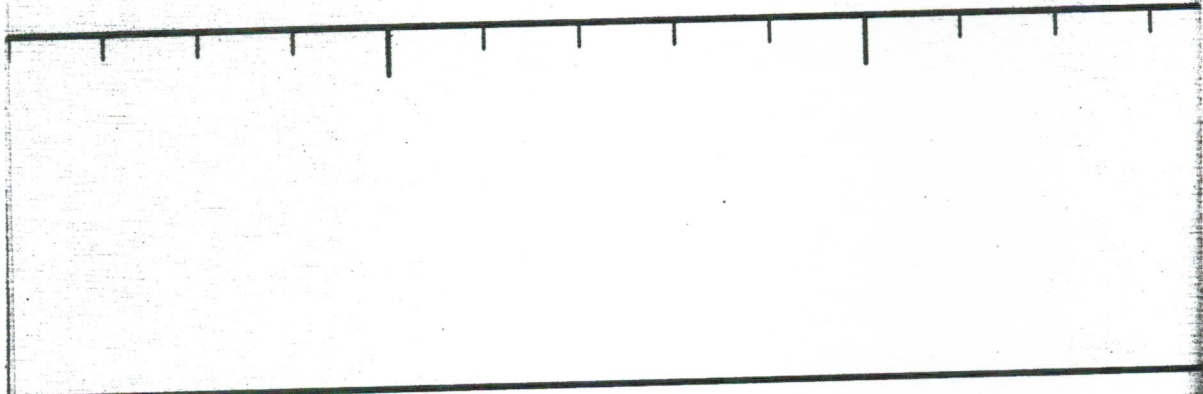
40

10

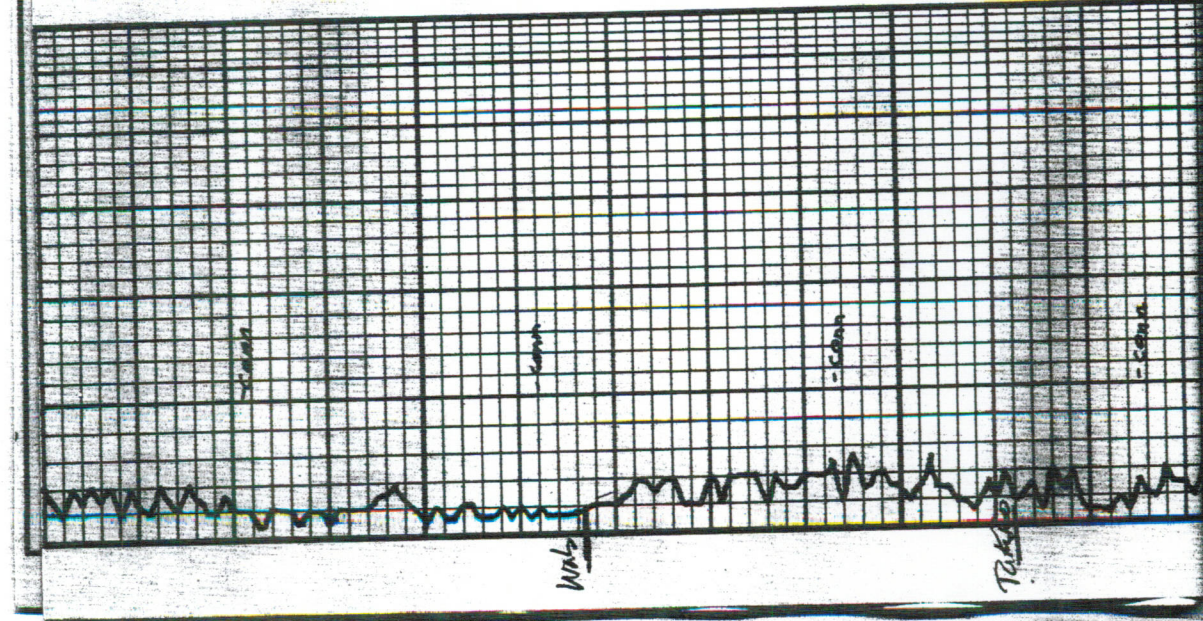


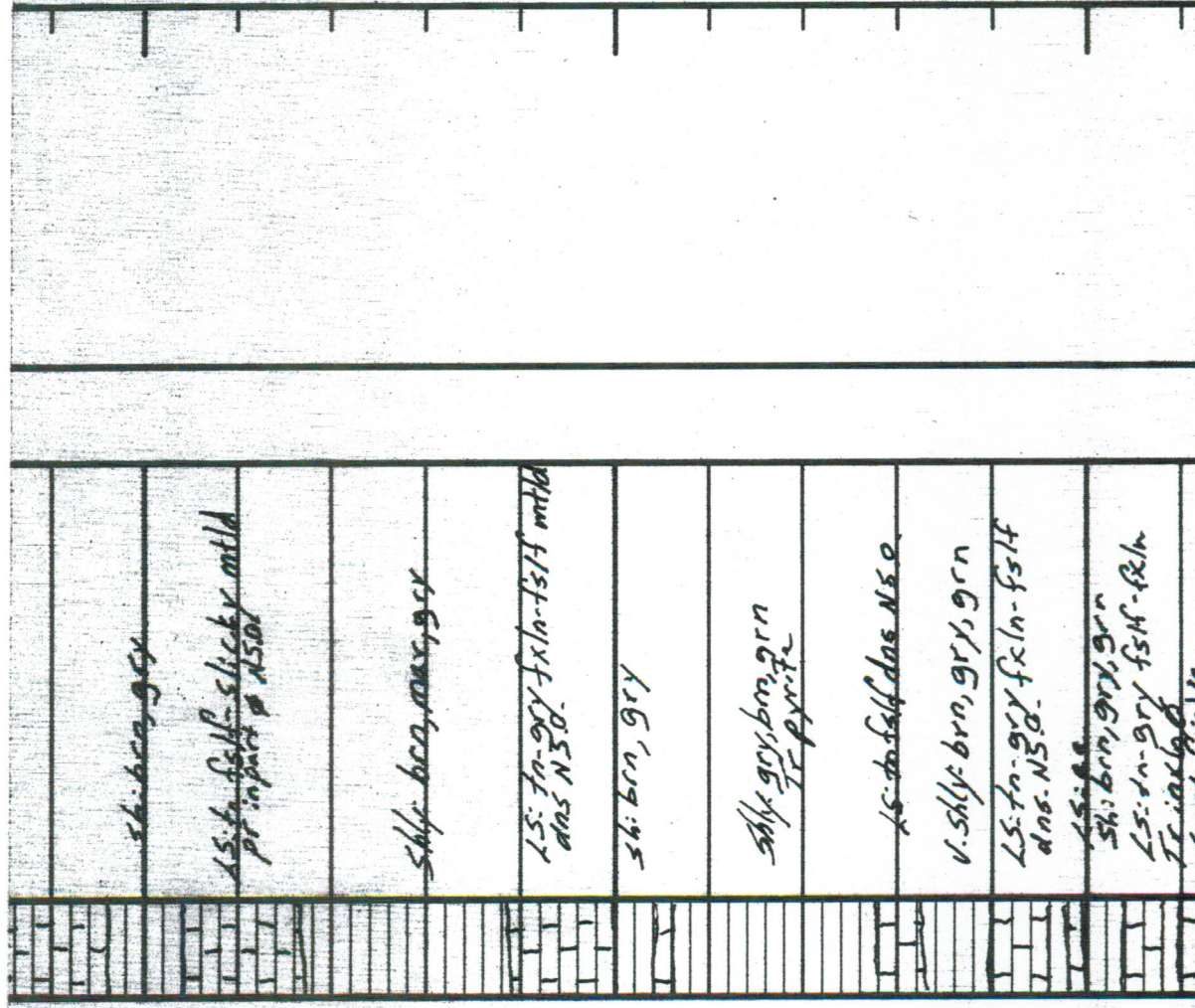
Base Activity





80      2800      20      40      60      80





2900

20

40

60

80

3000

sh: brn, gr

LS: f. f. l. p. slicky mtd  
pt in part @ NSD

sh: brn, max, gr

LS: fn-gry fxlh-fst mtd  
das NSD.

sh: brn, gr

sh: gr, brn, gr  
f. p. r. t.

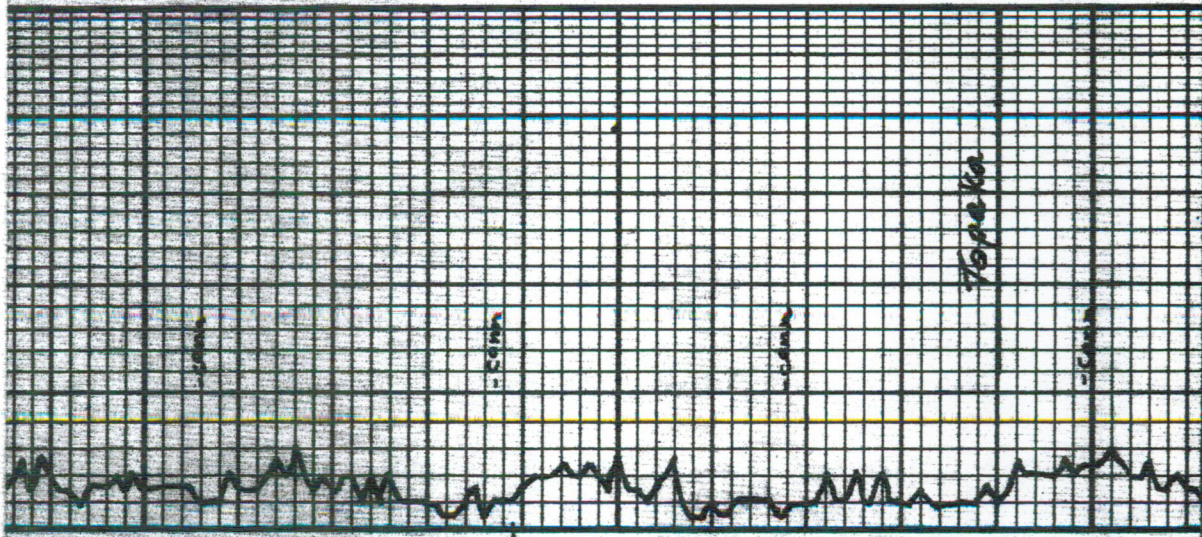
LS: to f. l. das NSD.

v. sh: brn, gr, gr

LS: fn-gry fxlh-fst  
das NSD.

sh: brn, gr, gr

LS: fn-gry fxlh-fst  
f. i. o. k. l. g. d.



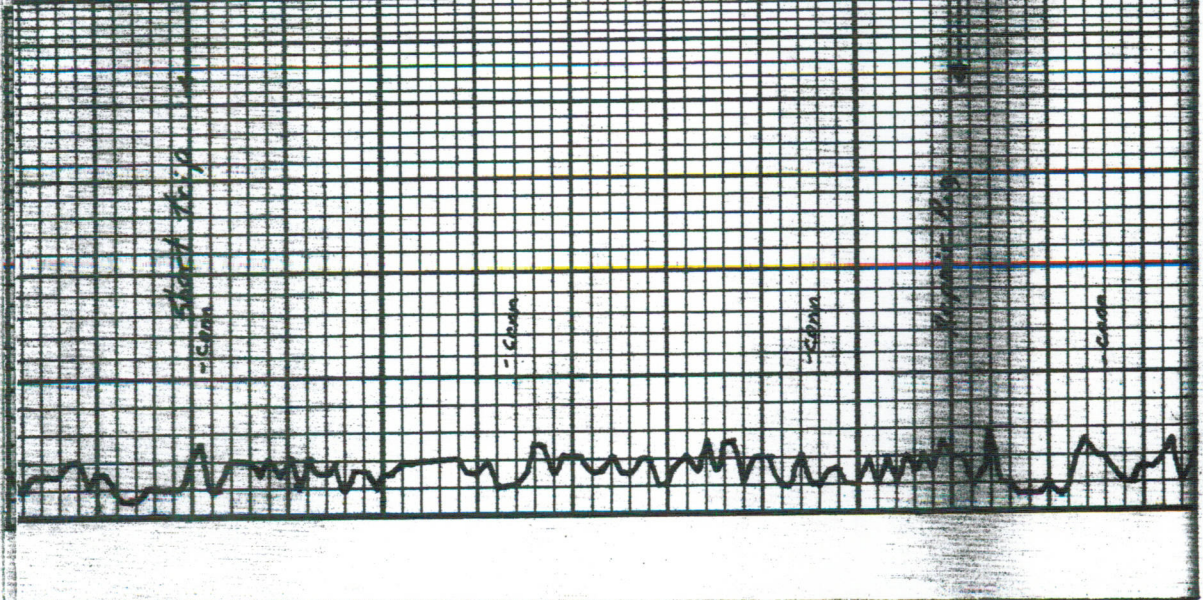
H2O

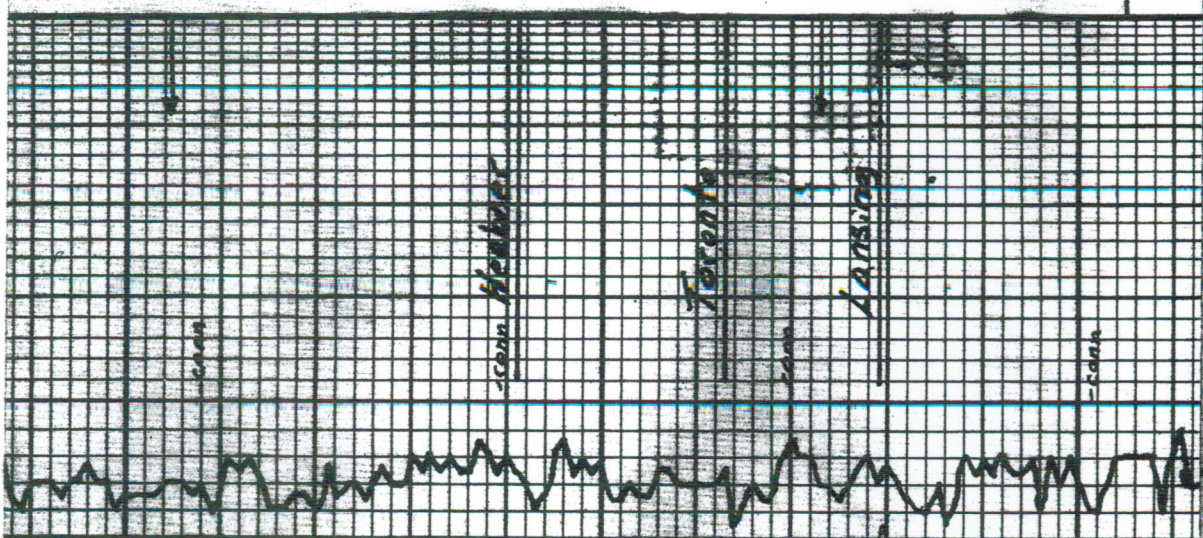
T

Topo ka

Tr 3/16 in diam NSO	15: wh-tk-gry skin-sli. cky inwd frab NSO.
Tr 6 1/2 Carb sh	15: tk-gry skin: fslf mtld das NSO. Pyrite
Sh: brn, gry	15: gxd fcl das mtld
Tr 1/2 NSO	Tr 1/2 gry - drk gry
Sh: brn, gry. drk gry	15: wh gry cky fslf mtld frab NSO. Pyrite
Sh: brn, gry	15: tk-gry fslf das NSO.
Tr Pyrite	Shly sample brn, gry, gr
Shly sample brn, gry, gr	Tr 55. Cons. clr-ang mt gn NSO.
Tr 55. Cons. clr-ang mt gn NSO.	55: gry v fr. gn. Cons. mt frab shly NSO.
55: gry v fr. gn. Cons. mt frab shly NSO.	Poor sample down for Rig repair
Poor sample down for Rig repair	15: tk-gry skin-051 fslf sh. Pyrite. Dr. inwd NSO.

20  
40  
60  
80  
3100  
20





40	15: 70-90 y fsh - st. fsh 15: 00 Dol: tan-gr in xln Ø N50 Cmc. Dol: tr blk thick string 0.1 stn Δtr
60	Dol: glassy frosted crystals w/ thick blk 0 stn (trace) pprite spars Δtr
80	15: tan-gr blk. sl: fs/f dns N50
1200	Sh: Blk Carb 15: tan-gry fsh mtd dns
20	15: wh-tr sl: cky-fsh Fr xln Ø N50 Δtr
40 A	15: tan-fsh-ppt fsh ppt p stn for pp fsh Dol: tan-fsh in xln Ø w/lt 0 stn
60	Dol: fsh-pxln in xln Ø Tr vgy Ø Lt Spd 0.5 tr fr. odor

Board 3282.87  
strap 3282.44  
Diff .43

Trilobite Testing

DST #1 3255-3277  
30-30-30-30

IF: Wk blow  
 FF: We blow  
 Recovery: 10 M/05pts  
 H/D: 1586-1554#  
 F.P: 12-15/16-18#  
 BHP: 709-558#  
 BHTemp: 108°F

DST #2 3192-3320  
 30-30-30-30  
 IF: B.O.B. in 5 1/2 min  
 FF: B.O.B. in 5 1/2 min  
 Recovery: 740 Total  
 115' WM SPAN 507  
 625' MM 907W 1070  
 HYD: 1582-1567#  
 F.P: 31-219/225-360  
 BHP: 878-856#  
 BHTemp: 114°F  
 Chlorides: system: 1200ppm  
 Recovery: 17000ppm

DST #3 3408-3484  
 45-45-45-45  
 IF: Wk blow in. to 1 1/2"  
 FF: Wk blow in. to 2 1/4"  
 Recovery: 65 Total  
 35' SL: MO 9520, 52M  
 30' ACM 1070, 902M  
 (30' G.I.P.)  
 HYD: 1625-1637#

Shly-brn, gry  
 waxy samples  
 Tr. LS: fr. in ool w/ rainbow  
 to show fr. pp. f.a.  
 (poor samples)  
 (samples improving)  
 LS: wh. to brn. gry fela  
 Tr. SL: ool grs  
 VRT fr. edge str

LS: wh. fr. - kgry fclndns  
 Tr. gr. pp. v. fr. sp. d  
 B. str. v. fr. sp. d

Dol: wh. fr. fcln slicky  
 ool - pp. d fr. sp. d o. str  
 RT pp. f. a.

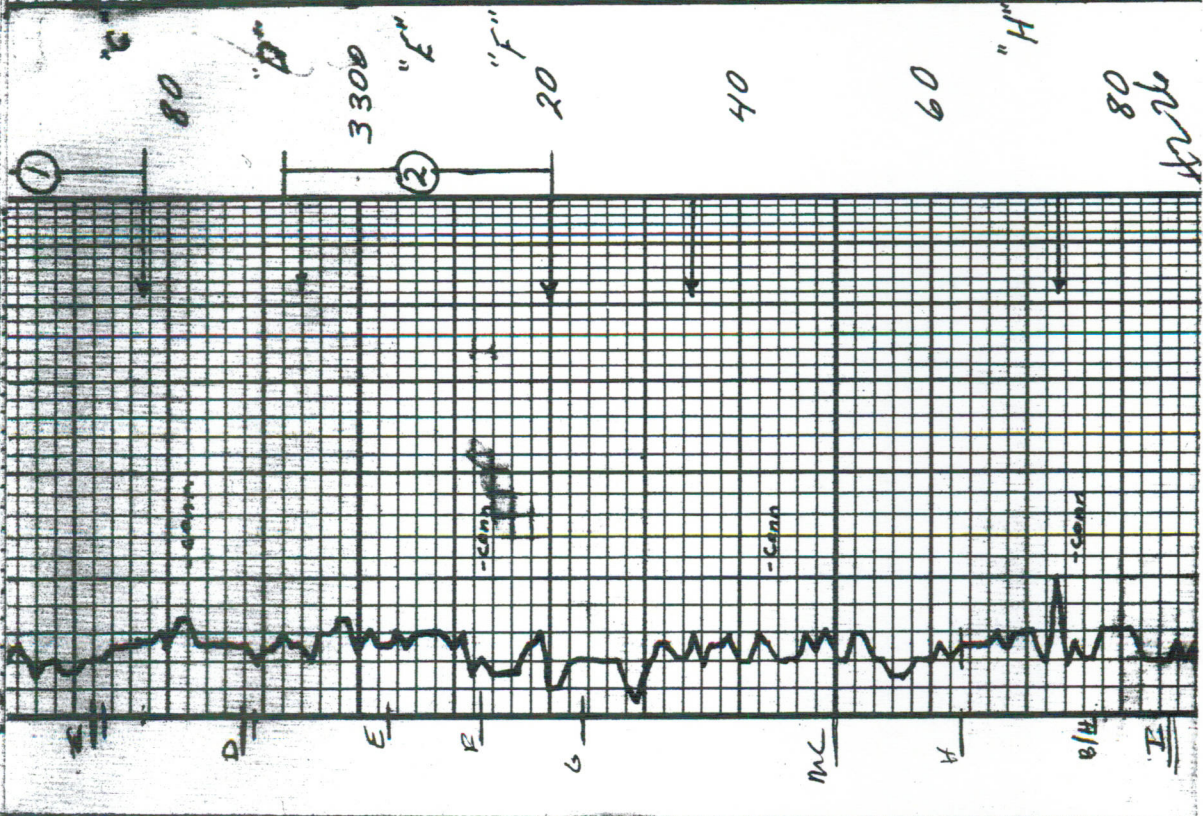
LS: wh. slicky - fcln  
 ool - pp. d fr. sp. d  
 O. str. v. fr. sp. d  
 Tr. pp. f. a.

LS: wh. fr. - kgry fclndns  
 Tr. gr. pp. v. fr. sp. d  
 B. str. v. fr. sp. d

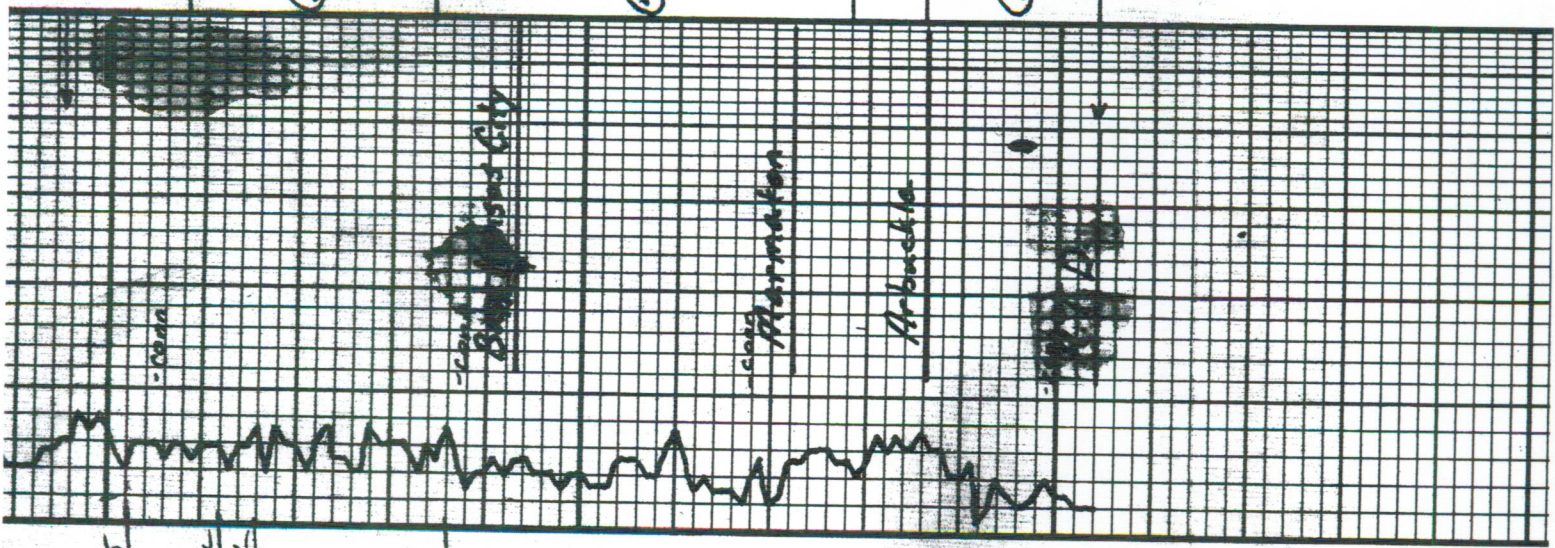
LS: wh. fr. - kgry fclndns  
 Tr. gr. pp. v. fr. sp. d  
 B. str. v. fr. sp. d

LS: wh. fr. - kgry fclndns  
 Tr. gr. pp. v. fr. sp. d  
 B. str. v. fr. sp. d

Shly-brn, gry  
 (pr samples brn, gry)







LS: tr-grv fxl pr inln 1/2 pr w spnd a 5x inln 1/2 asp spts	LS: wh-tr slichy-fxl pr inln 1/2 VRT pr 1/2 spnd 0.5th N.F.O. No odor	V. shly: gry, brn	LS: wh-tr fxl: inln 1/2 VRT 1/2 1/2 VRT pr 1/2 pr 1/2 spnd 0.5th No odor	LS: tr-fslf das pr 1/2 N.S.O.	sl: gry, brn, gao	LS: tr-grv fxl - fslf das N.S.O.	LS: wh-tr fxl sliobl das VRT 1/2 1/2 w/drk Thick a sta no odor	any sd w/blk asp spts Dol: fo-fxl - max h ft - fr spnd 0.5th fr bleeding FO 1/2 FO strong odor	Dol: w/str an Vay 1/2 - 1/2 odor										
---	--	-------------------	---	----------------------------------	-------------------	-------------------------------------	--	---	-------------------------------------	--	--	--	--	--	--	--	--	--	--

FF: 17-28/20-30  
BHP: 863 - 798 #  
BHTemp: 110°F  
Corrected Gravity: 35° API

DST #4 3434 - 3478  
30-30-0-0  
IF: wk blow down 19 min.  
Recovery: 5' M 4/0 spts  
Hyd: 1689-1656 #  
FP: 14-16 #  
BHP: 35 #  
BHTemp: 106°F

DST #5  
45-45  
IF: wk blow down 19 min  
ISI: Sur. blow down 7 min  
FF: wk blow down 19 min  
SSI: No blow down  
Recovery: 2.00° Total  
15' WM 95% 0.5% M  
15' WM 10% 0.5% M  
75' WM 40% 0.5% M  
125' MW 95% 0.5% M  
Hyd: 1712-1686 #  
FP: 21-85/89-116 #  
BHP: 935-851 #  
BHTemp: 113°F  
Corrected Gravity: 27° API  
Chlorides: system, 1000 ppm  
Recovery: 17500 ppm