



**TRILOBITE TESTING, INC.**

# DRILL STEM TEST REPORT

Samuel Gary Jr. and Associates, Inc.

**36 11s 22w Trego**

1515 Wynkoop St. Ste 700  
Denver, CO 80202

**Shubert 3-36**

Job Ticket: 51532

**DST#: 1**

ATTN: Chris Mitchell

Test Start: 2012.11.28 @ 11:20:01

## GENERAL INFORMATION:

Formation: **LKC " A-C "**

Deviated: No Whipstock: 2356.00 ft (KB)

Time Tool Opened: 14:00:10

Time Test Ended: 19:37:20

Test Type: Conventional Bottom Hole (Initial)

Tester: Jim Svaty

Unit No: 41

**Interval: 3648.00 ft (KB) To 3692.00 ft (KB) (TVD)**

Total Depth: 3692.00 ft (KB) (TVD)

Hole Diameter: 7.88 inches Hole Condition: Fair

Reference Elevations: 2356.00 ft (KB)

2348.00 ft (CF)

KB to GR/CF: 8.00 ft

**Serial #: 6752**

**Inside**

Press @ Run Depth: 45.90 psig @ 3657.00 ft (KB)

Start Date: 2012.11.28

End Date: 2012.11.28

Start Time: 11:20:01

End Time: 19:37:20

Capacity: 8000.00 psig

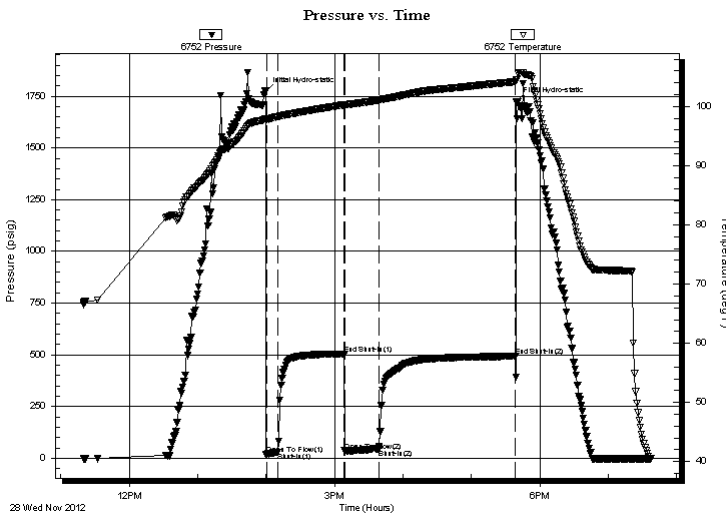
Last Calib.: 2012.11.28

Time On Btm: 2012.11.28 @ 13:59:20

Time Off Btm: 2012.11.28 @ 17:39:10

**TEST COMMENT:** 10-IFP- Surface Blow Building to 1 1/4in.  
60-ISIP- No Blow for 38min. Surface Blow There After  
30-FFP- Surface Blow Building to 2 1/4in.  
120-FSIP- No Blow

## PRESSURE SUMMARY



Time (Min.)	Pressure (psig)	Temp (deg F)	Annotation
0	1774.29	97.92	Initial Hydro-static
1	19.56	97.74	Open To Flow (1)
11	31.21	98.28	Shut-In(1)
70	505.10	100.27	End Shut-In(1)
70	36.12	100.05	Open To Flow (2)
100	45.90	101.05	Shut-In(2)
220	493.43	104.18	End Shut-In(2)
220	1725.29	104.49	Final Hydro-static

## Recovery

Length (ft)	Description	Volume (bbl)
60.00	WCM 30%w 70% m Show of Oil	0.56

## Gas Rates

Choke (inches)	Pressure (psig)	Gas Rate (Mcf/d)





**TRILOBITE  
TESTING, INC.**

# DRILL STEM TEST REPORT

**FLUID SUMMARY**

Samuel Gary Jr. and Associates, Inc.

**36 11s 22w Trego**

1515 Wynkoop St. Ste 700  
Denver, CO 80202

**Shubert 3-36**

Job Ticket: 51532

**DST#: 1**

ATTN: Chris Mitchell

Test Start: 2012.11.28 @ 11:20:01

## Mud and Cushion Information

Mud Type: Gel Chem

Cushion Type:

Oil API:

deg API

Mud Weight: 9.00 lb/gal

Cushion Length:

ft

Water Salinity:

52000 ppm

Viscosity: 58.00 sec/qt

Cushion Volume:

bbbl

Water Loss: 8.76 in<sup>3</sup>

Gas Cushion Type:

Resistivity: ohm.m

Gas Cushion Pressure:

psig

Salinity: 3000.00 ppm

Filter Cake: inches

## Recovery Information

Recovery Table

Length ft	Description	Volume bbl
60.00	WCM 30%w 70%m Show of Oil	0.559

Total Length: 60.00 ft      Total Volume: 0.559 bbl

Num Fluid Samples: 0

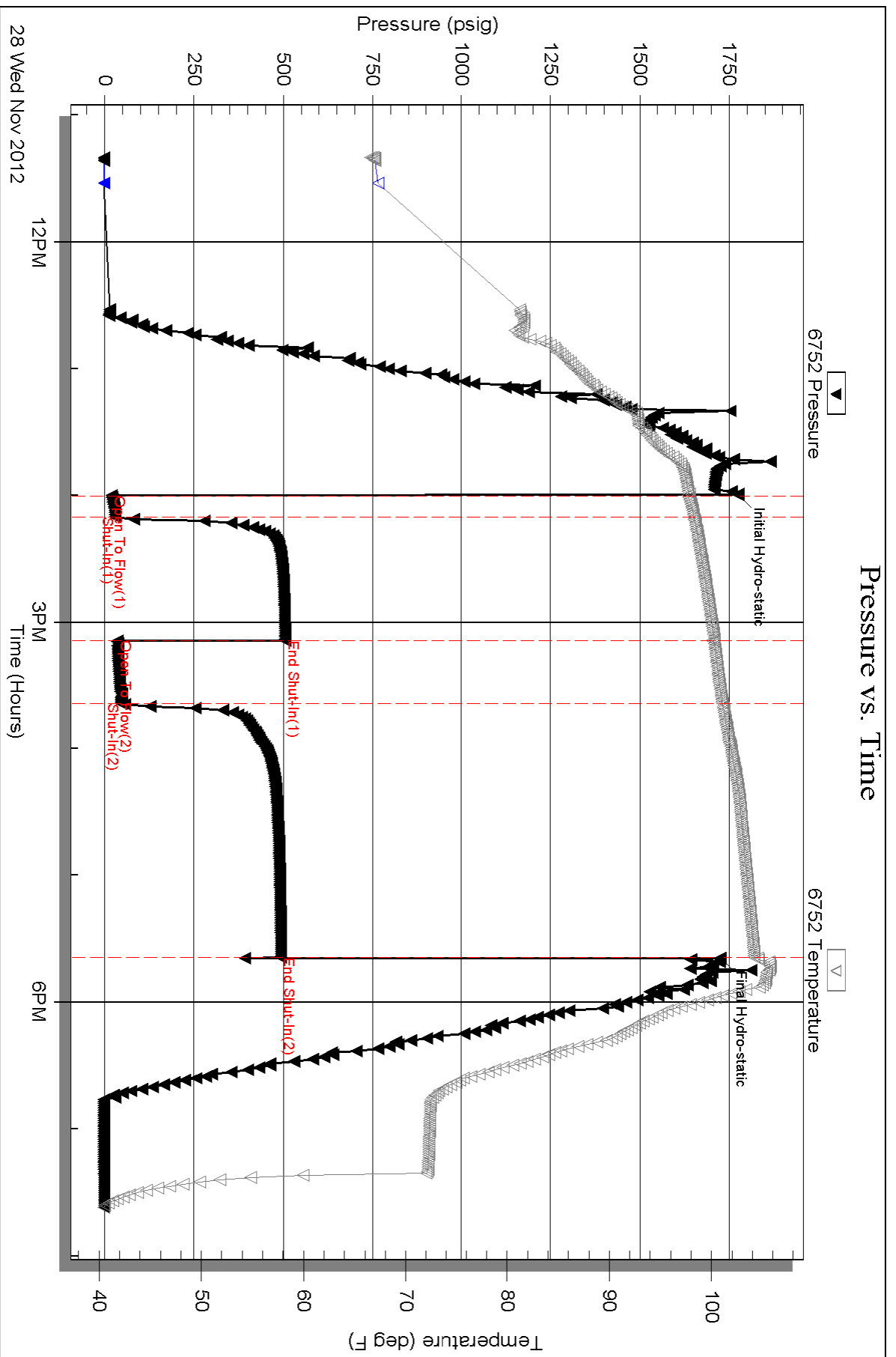
Num Gas Bombs: 0

Serial #:

Laboratory Name:

Laboratory Location:

Recovery Comments: SAMPLER- 150ml Water 350ml Mud .230 @ 43 - 54000 - 125 psi  
.239 @ 43 in Pipe



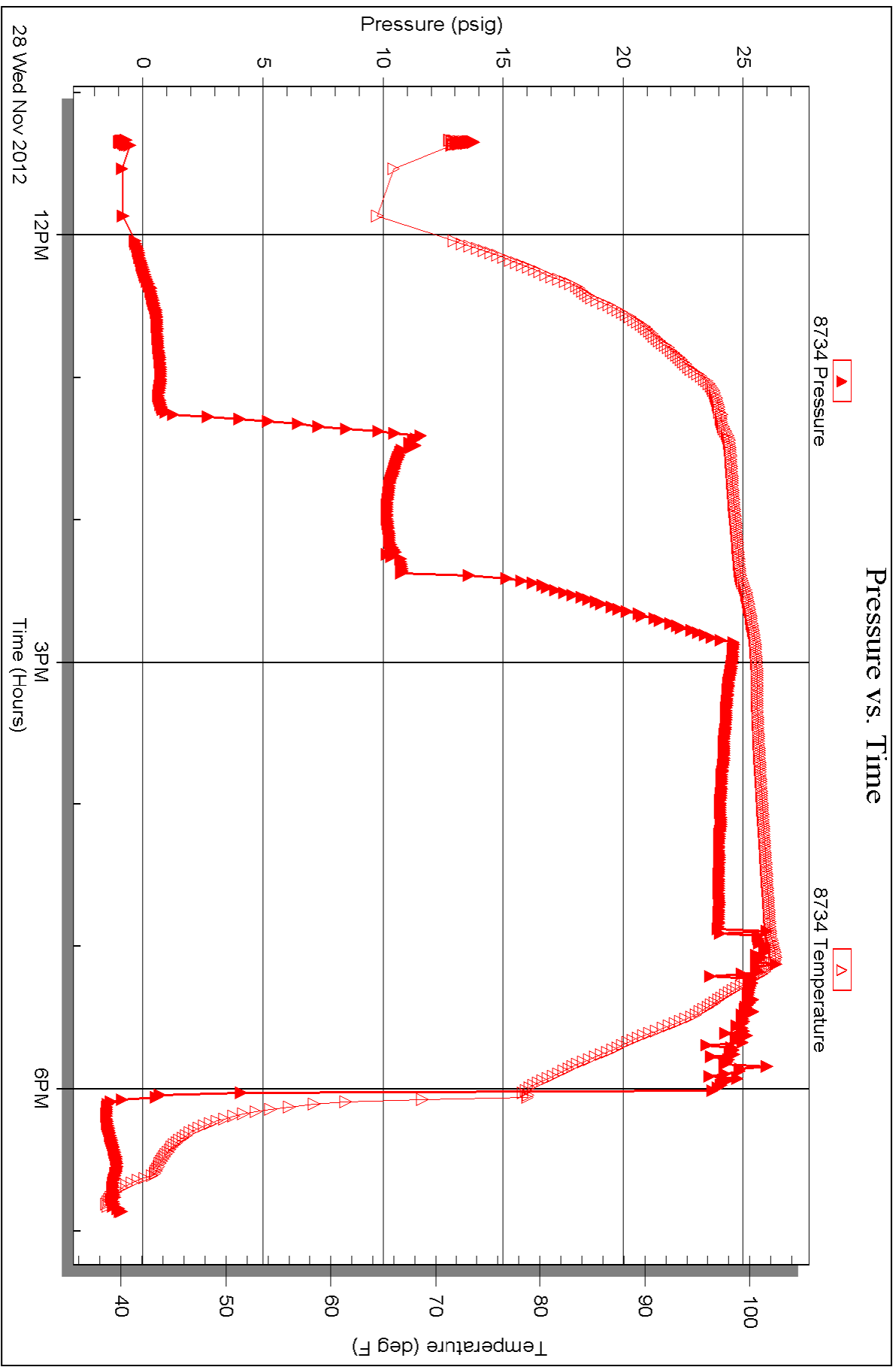
Serial #: 8734

Fluid

Samuel Gary Jr. and Associates, Inc.

Shubert 3-36

DST Test Number: 1



Triobite Testing, Inc

Ref. No: 51532

Printed: 2012.11.29 @ 07:44:43