



**TRILOBITE
TESTING, INC.**

DRILL STEM TEST REPORT

Samuel Gary Jr. and Associates, Inc.

36 11s 22w Trego

1515 Wynkoop St. Ste 700
Denver, CO 80202

Shubert 3-36

ATTN: Chris Mitchell

Job Ticket: 51533

DST#: 2

Test Start: 2012.11.29 @ 16:50:00

GENERAL INFORMATION:

Formation: **LKC " I - K "**

Deviated: No Whipstock: 2356.00 ft (KB)

Time Tool Opened: 19:13:00

Time Test Ended: 01:00:00

Test Type: Conventional Bottom Hole (Reset)

Tester: Jim Svaty

Unit No: 41

Interval: 3788.00 ft (KB) To 3860.00 ft (KB) (TVD)

Reference Elevations: 2356.00 ft (KB)

Total Depth: 3860.00 ft (KB) (TVD)

2348.00 ft (CF)

Hole Diameter: 7.88 inches Hole Condition: Fair

KB to GR/CF: 8.00 ft

Serial #: 6752 Inside

Press @ RunDepth: 32.13 psig @ 3794.00 ft (KB)

Capacity: 8000.00 psig

Start Date: 2012.11.29

End Date:

2012.11.30

Last Calib.: 2012.11.30

Start Time: 16:50:01

End Time:

00:59:30

Time On Btm: 2012.11.29 @ 19:12:40

Time Off Btm: 2012.11.29 @ 22:53:10

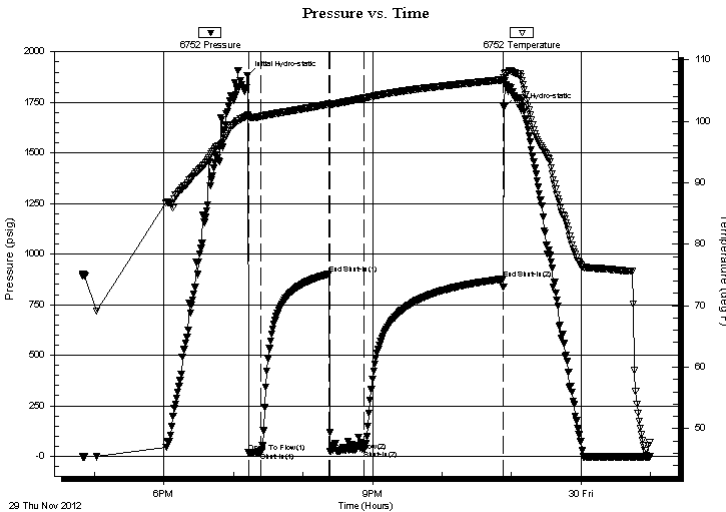
TEST COMMENT: 10-IFP- Surface Blow in 8min. Building to 3/4in.

60-ISIP- No Blow

30-FFP- Surface Blow in 9min.

120-FSIP- No Blow

PRESSURE SUMMARY



Time (Min.)	Pressure (psig)	Temp (deg F)	Annotation
0	1881.21	100.97	Initial Hydro-static
1	18.24	100.69	Open To Flow (1)
12	22.39	100.76	Shut-In(1)
70	901.25	102.78	End Shut-In(1)
71	24.52	102.65	Open To Flow (2)
100	32.13	103.73	Shut-In(2)
220	876.77	106.74	End Shut-In(2)
221	1726.29	107.05	Final Hydro-static

Recovery

Length (ft)	Description	Volume (bbl)
15.00	MUD 100%	0.07

* Recovery from multiple tests

Gas Rates

Choke (inches)	Pressure (psig)	Gas Rate (Mcf/d)



**TRILOBITE
TESTING, INC.**

DRILL STEM TEST REPORT

FLUID SUMMARY

Samuel Gary Jr. and Associates, Inc.

36 11s 22w Trego

1515 Wynkoop St. Ste 700
Denver, CO 80202

Shubert 3-36

Job Ticket: 51533

DST#: 2

ATTN: Chris Mitchell

Test Start: 2012.11.29 @ 16:50:00

Mud and Cushion Information

Mud Type: Gel Chem

Cushion Type:

Oil API:

deg API

Mud Weight: 9.00 lb/gal

Cushion Length:

ft

Water Salinity:

ppm

Viscosity: 54.00 sec/qt

Cushion Volume:

bbbl

Water Loss: 8.78 in³

Gas Cushion Type:

Resistivity: ohm.m

Gas Cushion Pressure:

psig

Salinity: 5000.00 ppm

Filter Cake: inches

Recovery Information

Recovery Table

Length ft	Description	Volume bbl
15.00	MUD 100%	0.074

Total Length: 15.00 ft Total Volume: 0.074 bbl

Num Fluid Samples: 0

Num Gas Bombs: 0

Serial #:

Laboratory Name:

Laboratory Location:

Recovery Comments: Sampler- No Fluid 105 psi

Pressure vs. Time

