



**TRILOBITE
TESTING, INC.**

DRILL STEM TEST REPORT

Cholla Production, LLC

1-2s-30w Decatur, KS

10390 Bradford rd. STE #201
Littleton, CO 80127

Anderson Farms #1-1

ATTN: Clayton Erickson

Job Ticket: 51201

DST#: 1

Test Start: 2013.02.26 @ 21:57:00

GENERAL INFORMATION:

Formation: **LKC "A"**

Deviated: No Whipstock: ft (KB)

Time Tool Opened: 00:18:45

Time Test Ended: 05:36:30

Test Type: Conventional Bottom Hole (Initial)

Tester: Kevin Mack

Unit No: 43

Interval: 3731.00 ft (KB) To 3800.00 ft (KB) (TVD)

Reference Elevations: 2791.00 ft (KB)

Total Depth: 3800.00 ft (KB) (TVD)

2786.00 ft (CF)

Hole Diameter: 7.88 inches Hole Condition: Good

KB to GR/CF: 5.00 ft

Serial #: 6799

Inside

Press @ Run Depth: 78.82 psig @ 3732.00 ft (KB)

Capacity: 8000.00 psig

Start Date: 2013.02.26

End Date:

2013.02.27

Last Calib.:

2013.02.27

Start Time: 21:57:05

End Time:

05:36:29

Time On Btm:

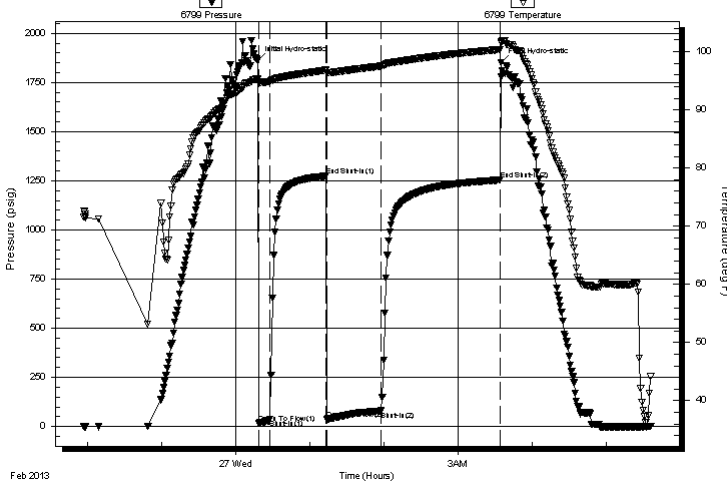
2013.02.27 @ 00:17:45

Time Off Btm:

2013.02.27 @ 03:35:00

TEST COMMENT: 10 - IF- 1" Blow built to 2"
45 - IS- No Return
45 - FF- Blow built to 6 1/2"
90 - FS- No Return

Pressure vs. Time



PRESSURE SUMMARY

Time (Min.)	Pressure (psig)	Temp (deg F)	Annotation
0	1862.67	95.27	Initial Hydro-static
1	17.12	94.82	Open To Flow (1)
10	36.56	94.88	Shut-In(1)
55	1273.38	96.80	End Shut-In(1)
56	37.61	96.45	Open To Flow (2)
100	78.82	97.51	Shut-In(2)
196	1252.85	100.35	End Shut-In(2)
198	1850.47	101.73	Final Hydro-static

Recovery

Length (ft)	Description	Volume (bbl)
60.00	MW 85W 15M	0.30
80.00	MW 70W 30M	0.58
1.00	Free Oil 100o	0.01

Gas Rates

	Choke (inches)	Pressure (psig)	Gas Rate (Mcf/d)



**TRILOBITE
TESTING, INC.**

DRILL STEM TEST REPORT

FLUID SUMMARY

Cholla Production, LLC

1-2s-30w Decatur, KS

10390 Bradford rd. STE #201
Littleton, CO 80127

Anderson Farms #1-1

Job Ticket: 51201

DST#: 1

ATTN: Clayton Erickson

Test Start: 2013.02.26 @ 21:57:00

Mud and Cushion Information

Mud Type: Gel Chem

Cushion Type:

Oil API:

deg API

Mud Weight: 9.00 lb/gal

Cushion Length:

ft

Water Salinity:

ppm

Viscosity: 64.00 sec/qt

Cushion Volume:

bbbl

Water Loss: 6.80 in³

Gas Cushion Type:

Resistivity: 0.00 ohm.m

Gas Cushion Pressure:

psig

Salinity: 500.00 ppm

Filter Cake: 1.00 inches

Recovery Information

Recovery Table

Length ft	Description	Volume bbbl
60.00	MW 85W 15M	0.295
80.00	MW 70W 30M	0.576
1.00	Free Oil 100o	0.014

Total Length: 141.00 ft Total Volume: 0.885 bbl

Num Fluid Samples: 0

Num Gas Bombs: 0

Serial #:

Laboratory Name:

Laboratory Location:

Recovery Comments: Sampler recovery: 150lbs pressure. 200ML Mud 1800ML Water (Oil skim on top resulting in oil spots) 2000ML total

