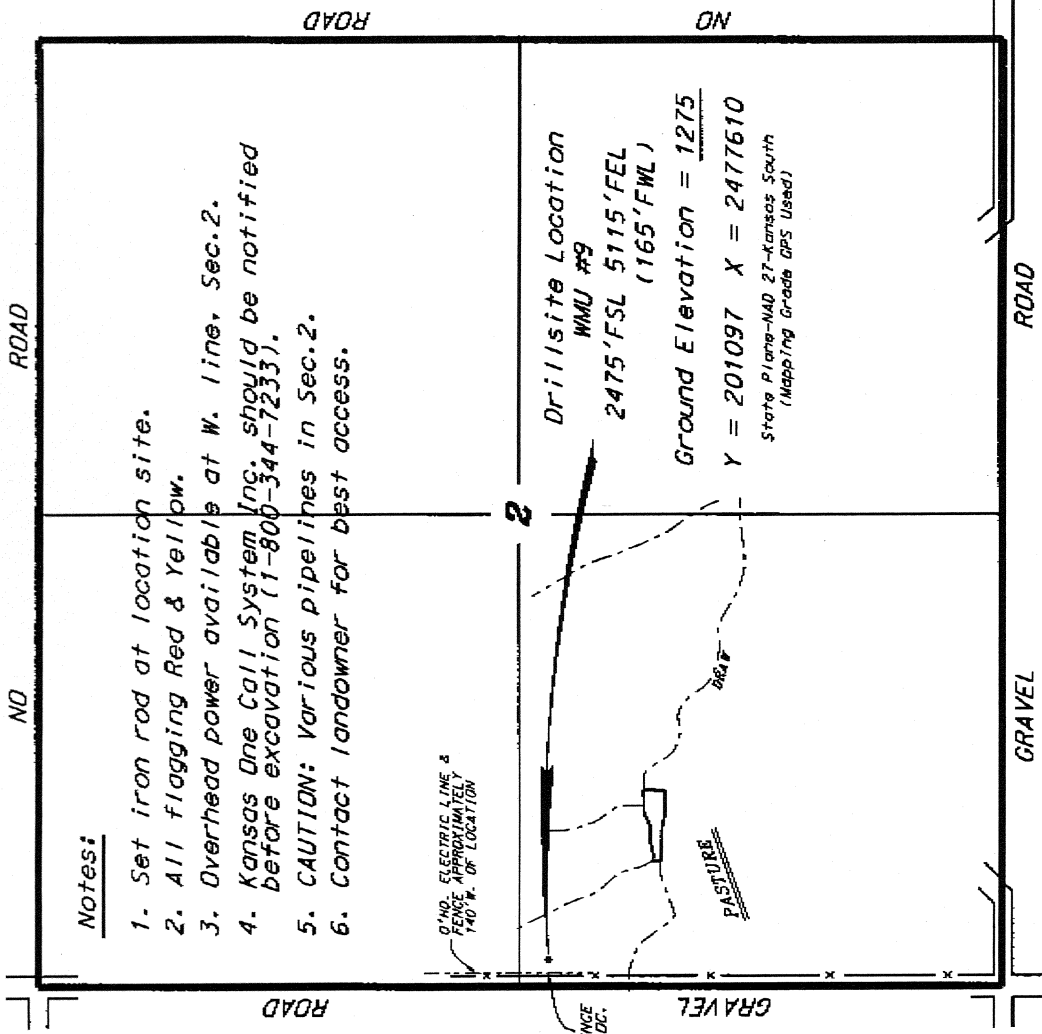


**FUTURE PETROLEUM COMPANY, LLC**

MMU LEASE

SW. 1/4, SECTION 2, T33S, R5E  
COWLEY COUNTY, KANSAS



**Notes:**

1. Set iron rod at location site.
2. All flagging Red & Yellow.
3. Overhead power available at W. line, Sec.2.
4. Kansas One Call System [nc. should be notified before excavation (1-800-344-7233).
5. CAUTION: Various pipelines in Sec.2.
6. Contact landowner for best access.

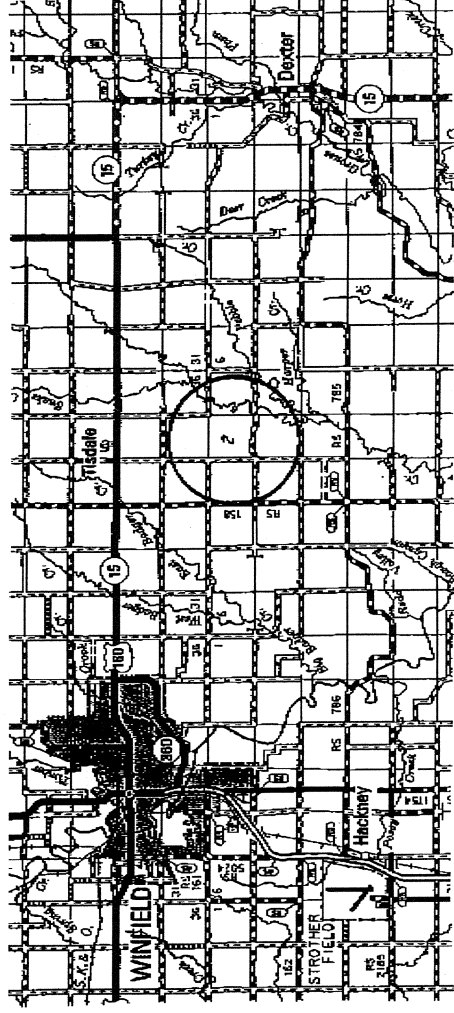
0" NO. ELECTRIC LINE & FENCE APPROXIMATELY 140' W. OF LOCATION

Drill site Location  
MMU #9  
2475' FSL 5115' FEL  
(165' FWL)

Ground Elevation = 1275  
Y = 201097 X = 2477610

State Plane-NAD 27-Kansas South  
(Mapping Grade GPS Used)

\*Ingress and egress to location as shown on this plat is for usage only and may not be legally opened for public use. Contact landowner, tenant and county road department for access.



\* Controlling data is based upon the best maps and photographs available to us and upon a regular section of land containing 340 acres.  
\* Approximate section lines were determined using the normal standard of care of oilfield surveyors practicing in the state of Kansas. The section corners, which establish the precise section lines, were not necessarily located and were based on a best location of them and according to the best other parties relying thereon or to the Central Kansas Oilfield Services, Inc. Its officers and employees shall consequently disclaim any and all liability and expense and hold harmless from any liability \* Coordinates are from National Geodetic Vertical Datum.

Date March 12, 2013

**CENTRAL KANSAS OILFIELD SERVICES, INC. (620)792-1977**