

WELLSITE GEOLOGIST'S REPORT

J. R. Husted
Consulting Geologist



Scale 1:240 (5"=100') Imperial
Measured Depth Log

Well Name: Menzer N0 1-22
Location: SEC 22-T17S-R15W
License Number: 15-009-25,800-0000
Spud Date: JAN. 7 2013

Region: Barton Co,KS
Drilling Completed: JAN. 18 2013

Surface Coordinates: 2000' FSL, 1375' FEL
Bottom Hole Coordinates: VERTICAL

Ground Elevation (ft): 1992' K.B. Elevation (ft): 2000'
Logged Interval (ft): 1800' To: 3750' Total Depth (ft): 3750'
Formation: Lansing/KC, ARBUCKLE
Type of Drilling Fluid: STARCH/CHEMICAL

Printed by WellSight Log Viewer from WellSight Systems 1-800-447-1534 www.WellSight.co

OPERATOR

Company: F.G. HOLL COMPANY
Address: 9431 E. CENTRAL STE 100
WICHITA, KANSAS 67206

GEOLOGIST

Name: RENE HUSTEAD
Company: HUSTEAD EXPLORATION
Address: 600 N. WINWOOD ST
GARDNER, KANSAS 66030

ROCK TYPES

	Anhy
	Bent
	Brec
	Cht
	Clyst
	Coal
	Congl
	Dol

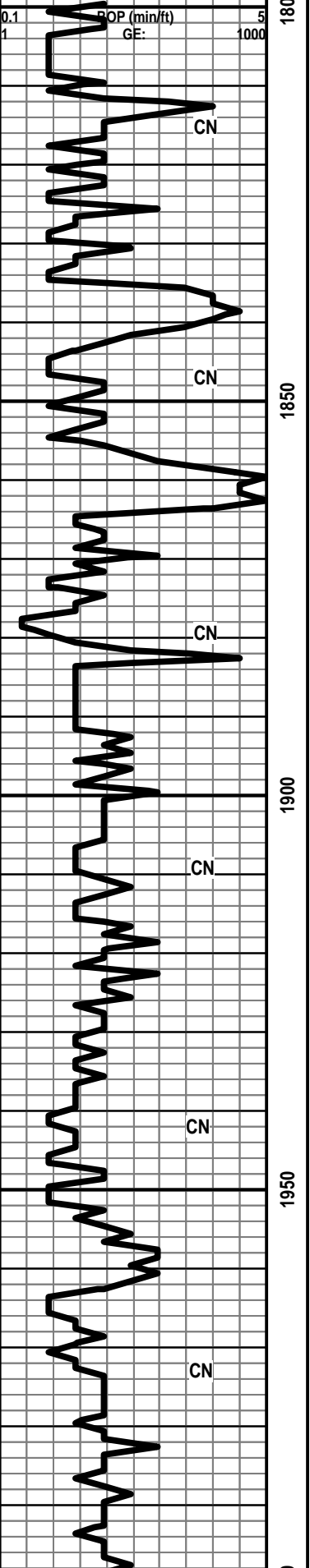
	Gyp
	Igne
	Lmst
	Meta
	Mrlst
	Salt
	Shale
	Shcol

	Shgy
	Sltst
	Ss
	Till
	Carb sh
	Dol
	Dtd
	Gry sh

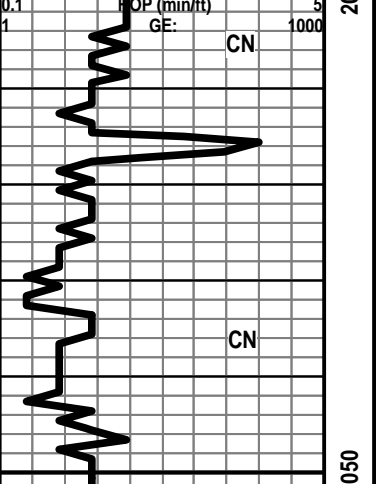
	Sandylms
	Shale
	Sltstn
	Shlyslts
	Sltysh
	Lms

MUD DATA @
1415'
WT. 8.9
VIS 28

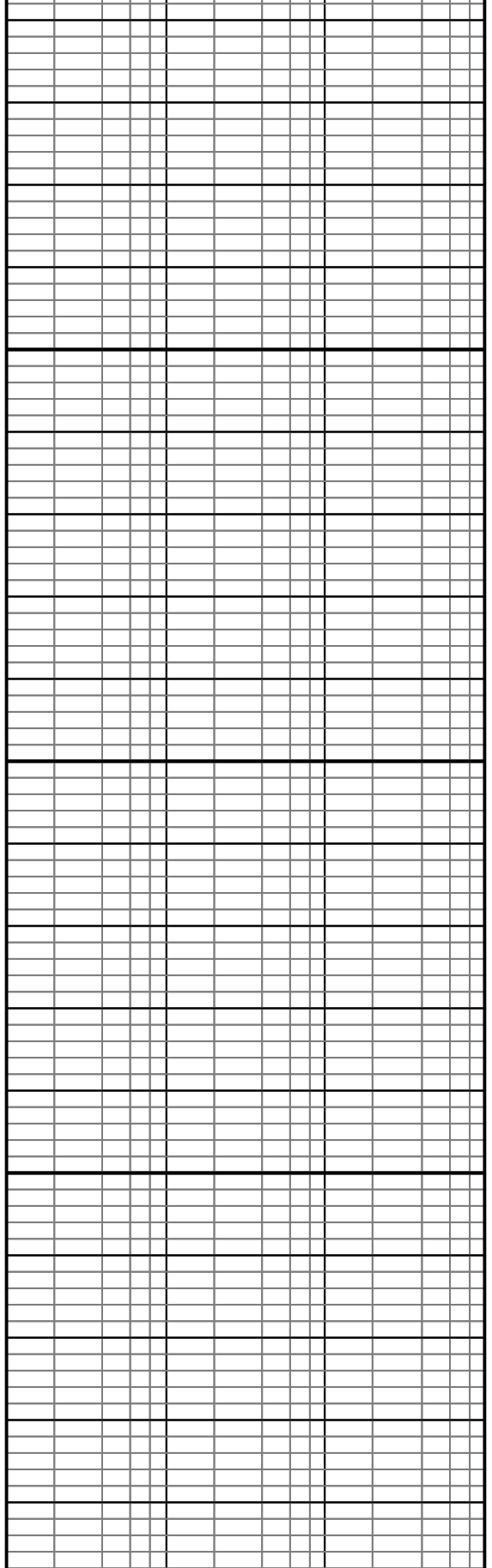
0.1 1 BOP (min/ft) 5 1000
GE:



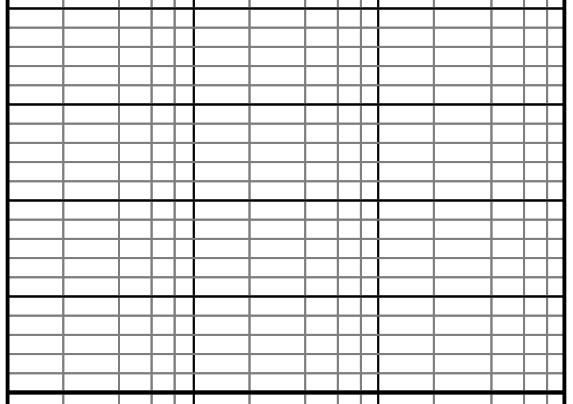
0.1 1 BOP (min/ft) 5 1000
GE:

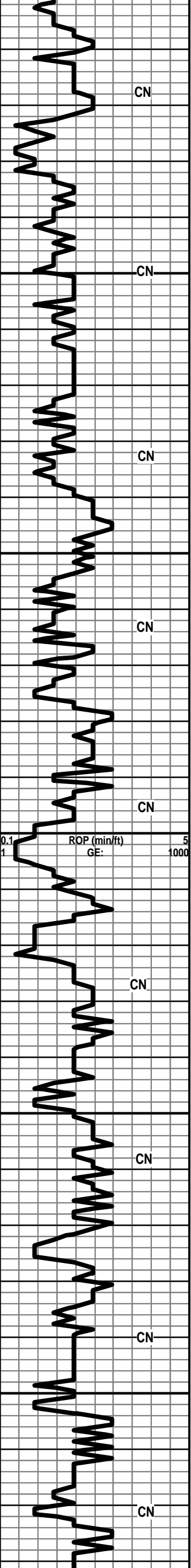


1 10 TG, C1-C5 100 1000



1 10 TG, C1-C5 100 1000





2100

2150

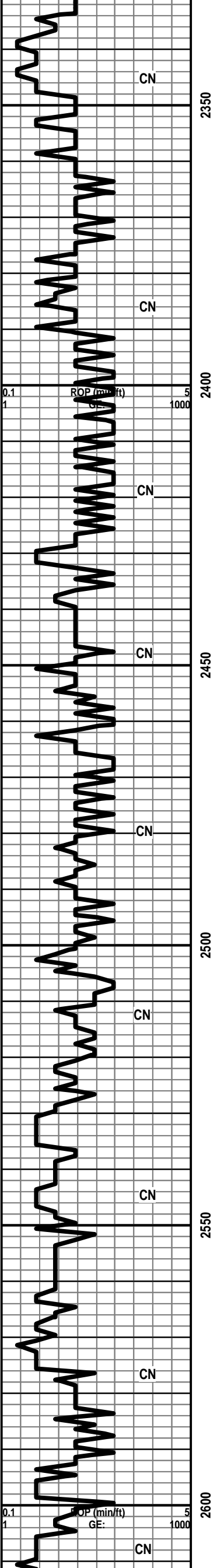
2200

2250

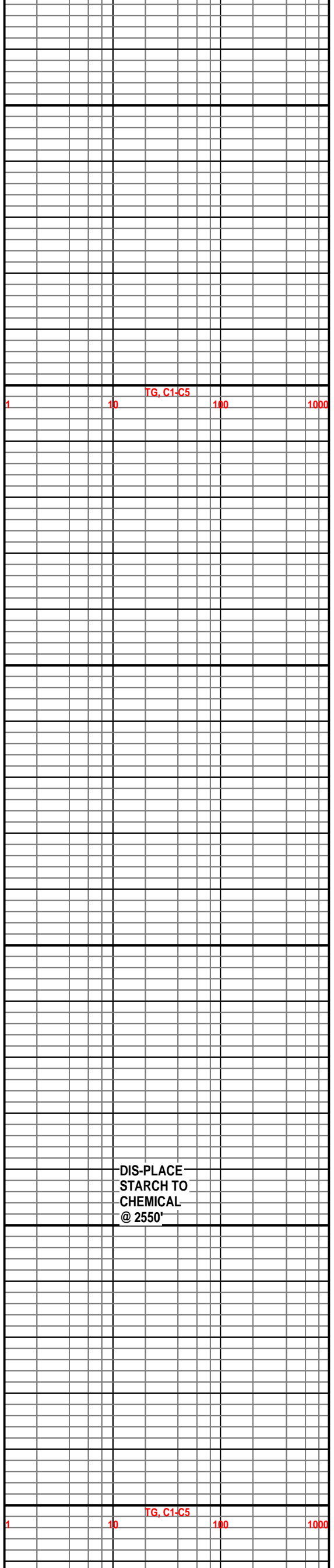
2300

MUD DATA @2095'
 WT. 10.1
 VIS 34
 FIL 8.4

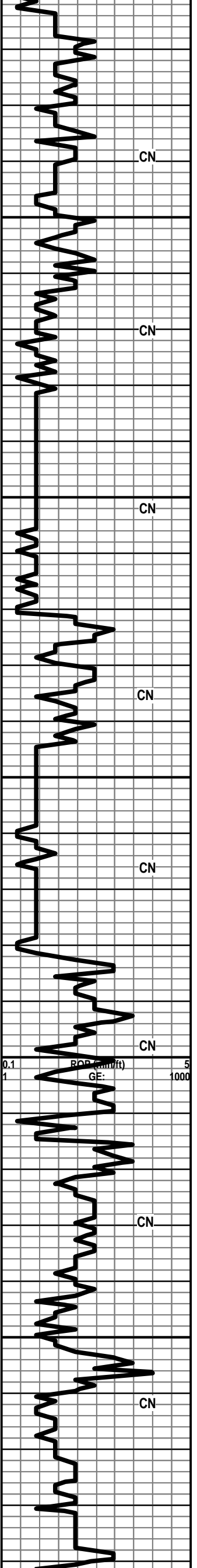
1 10 100 1000
 TG, C1-C5



LS-GRY/TN-F-GRN-BRIT-FOSS-SHLY-MSTLY
 DNS W/ TR PP POR
 SH-GRY-SFT-SILTY
 LS-OFF WHT/BLK
 SPECS-M-XLN-BRIT-FOSS-PR INTER-XLN PO
 LS-TN-F-XLN-TR FOSS-HD-DNS
 LS-LT BRN-F-XLN-SM OOL-HD-DNS
 LS-LT GRN-F-XLN-BRIT-SHLY-DNS
 SH-GRY-BLKY-FOSS



DIS-PLACE
 STARCH TO
 CHEMICAL
 @ 2550'



2650

2700

2750

2800

2850

LS-GRY-F-XLN-SUCRO-HD-PR INTER-GRN POR

LS A.A.

LS-TN-M-GRN-FOSS-HD-MSTLY DNS -TR PP POR

SH-GRY-SFT-SILTY-TR HEM-MICA

SH-GRY-V-SFT-SILTY

LS-DK GRY-V-F-XLN-GLAU-HD-DNS

SHALES-GRY-BLKY-V-SFT

LS-TN-F-XLN-CHRTY-FOSS-HD-DNS

SLTSS-FRSTY GRY-V-F-GRN-SHLY-MICA -HEM

SH-DK GRY-SPLNTY

SH-RED-V-SFT-GUMMY/TR SPLNTY

SH-GRY-SFT-V-SILTY-PYR XLS

**STOTLER 2722' (-722')
LOG 2718'**

LS-TN-F-XLN-FOSS SHELL-HD-DNS

LS-TN-F-XLN-SUCRO-BRIT TO HD-MSTLY DNS-TR INTER-XLN POR N/S

SH-GRY-V-SFT-SILTY-HEM

SS-FRSTY WHT-M-GRN-RND TO SUB RND-FRI-PR SRTEG-CALC CMT-TR INTER-GRN POR (1 PC IN SAMPLE MSTLY SHALE-GRY-SILTY

SS AND SHALES A.A.

**TARKIO 2782' (-782')
LOG 2778'**

LS-TN-F-XLN-CHRTY-HD-DNS

LS-DK BRN-F-XLN-FOSS-HD-DNS

SH-DK GRY-SPLNTY

LS-TN-F-GRN-BRIT-FOSS-TR SH IMBD-NO VIS POR-N/S

LS-GRY-F-GRN-FOSS-OOL-HD-DNS

SH-DK GRY-BLKY

LS-GRY/LT BRN-F-XLN-BRIT-FOSS-SHLY-NO VIS POR-N/S SH-GRY-BLKY-FOSS

LS-GRY/OFF WHT-F-GRN-BRIT-FOSS-OOL-TR SH-LT GRY IMBD-TR INTER-GRN/PP POR-N/S

LS-LT BRN-F-XLN-CHRTY-HD-DNS

SH-DK GRY-SPLNTY

LS-GRY-F-XLN-BRIT-SHLY-DNS

POOR SAMPLE

LS-OFF WHT/TN-F-GRN-HD-FOSS-OOL-PYR-DNS

MUD DATA @ 2651
WT. 8.7
VIS 44
FIL 6.4

HW 10 UNIT GAS INCRS

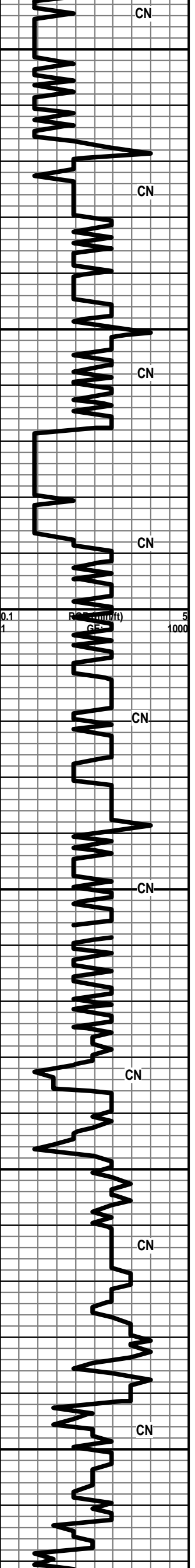
HW 12 UNIT GAS INCRS

WT. 8.9
VIS 50

TG. C1-C5

1 10 100 1000

WT. 9.1
VIS 49



2900
2950
3000
3050
3100
3150

SH-LT GRY-V-SFT-SILTY

SLTSS-FRSTY GRY-F-GRN-SHLY-MICA-HEM

SLTSS A.A.

HOWARD 2917' (-917')
LOG 2914'

LS-GRY-F-XLN-HD-DNS

POOR SAMPLES

LS-LT BRN-F-XLN-BLOCKY-HD-DNS
SH-GRY-BLKY-FOSS-SHELL

LS-TN/GRY-M-GRN-BRIT-CHLKY-FOSS-NO VIS
POR-N/S

SEVERY 2968' (-968')
LOG 2662'

SH-GRY-BLKY-SILTY

SLTSS-FRSTY GRY-F-GRN-V-SHLY-HEM-MICA

TOPEKA 2984' (-986')

LS-TN-F-XLN-BRIT-TR FOSS-TR PP POR-NO
VIS SHOW

LS-OFF WHT/GRY-F-XLN-FOSS-SHLY-NO VIS
FLOR-NO VIS SHOW

LS-GRY-V-F-XLN-HD-DNS W/ GLAU

LS A.A. PYR XLS IN TRAY

LS-GRY-F-XLN-HD-DNS

LS-TN-F-XLN-BRIT-FOSS-SHLY-NO VIS
FLOR-NO VIS SHOW

LS-TN/GRY-F-XLN-BRIT-FOSS-SHLY-NO VIS
FLOR-NO VIS SHOW

LS-TN/GRY-F-XLN-BRIT-SHLY-FOSS-NO VIS
FLOR-NO VIS SHOW

SH-GRY-GRN-SPLNTY

SH-GRY-BLKY-SILTY

LS-OFF WHT-F-XLN-CHLKY-FOSS-SHLY-PYR
XLS IMBD-NO VIS FLOR-NO VIS SHOW

LS-TN-F-XLN-BRIT-FOSS-TR SH-DNS

LS-OFF
WHT/TN-F-XLN-BRIT-FOSS-SHLY-DNS-NO VIS
FLOR-NO VIS SHOW

SH-BLK-CARB

LS-TN/GRY-F-XLN-BRITTO HD-LG GRY
OOL-NO VIS FLOR-NO VIS SHOW

LS-OFF
WHT/TN-F-XLN-BRIT-FUS-OOL-DNS-NO VIS
FLOR-NO VIS SHOW

LS-TN-F-XLN-BRIT-CHLKY-FOSS-PP-PP-ANF

KB=2000

WT. 9.2
VIS 46

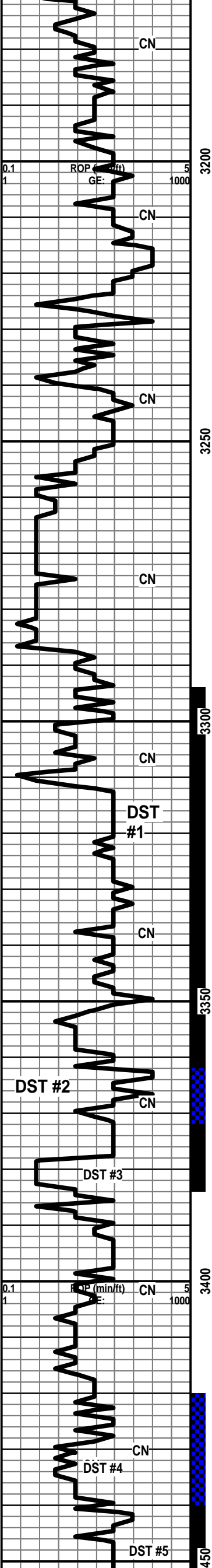
TG. C1-C5

1 10 100 1000

WT. 9.2
VIS 55

WT. 9.3
VIS 53

WT. 9.3
VIS 50



3200

3250

3300

3350

3400

450

LS-TN-F-XLN-BRIT-CHLKY-FOSS-PP ANL
SM VUG POR-TR LT BRN STN-NO VIS
FLOR-PR STRM CUT-NO ODOR

LS-TN-F-XLN-CHLKY IP-OOL-FR SM
OOL-MOLDIC POR-LT BRN STN-NO VIS
FLOR-PR FLSH CUT-NO ODOR

WT. 9.3
VIS 40

LS-TN-F-XLN-FOSS FRAGS-PR EDGE PP POR
IP TO NO VIS POR-LT BRN STN-NO VIS
FLOR-PR FLSH CUT-NO ODOR

TG. C1-C5
1 10 100 1000

HEEBNER 3224' (-1224')

SH-BLK-CARB

HW 15 UNIT GAS
INCRS

**TORONTO 3240' (1240')
LOG 3243'**

MUD DATA @3230'
WT. 9.3
VIS 46
FIL 6.8
CHLORIDES-6700

LS-OFF WHT-F-XLN-BRIT-CHLKY-TR FOSS-N
VIS POR-DULL WHT MIN FLOR-NO VIS SHOW

DOUGLAS SH 3248' (-1248')

SHALES-RED/GRY-SFT-BLKY

SHALES-LT GRY-SILTY-BLKY

**BROWN LS 3288' (-1288')
LOG- 3283'**

LS-LT BRN-F-XLN-FOSS-HD-DNS

DST #1
3294-3361
REC -13 FT MUD
IBLW-WK BLW 1/2
INCH
FBLW-WK BLW 1/2
INCH
15/30/15/30
SIP-1027.64-1003.4

LANSING/KC 3302' (-1302')

LS-TN-F-XLN-BRIT-FOSS-OOL-TR SH GRY
IMBD-PR TO FR OOL-MOLDIC/VUG POR-LT
BRN STN IP-NO VIS FLOR-FNT FLSH CUT-NO
ODOR

HW 10 UNIT GAS
INCREASE

LS-TN-F-XLN-HD-DNS W/ TR LT BRN STN IP
TO NO VIS STN-NO VIS FLOR-FNT FLSH
CUT-NO ODOR

IFP-56.4-68.7
FFP-61.3-71.7
HP-1695.8-1617

LS A.A.

MUD DATA @
3371'
WT. 9.35
VIS 53
FIL 8.4
CHLORIDES-8200
(INCRS DUE TO
TEST)

LS-TN-F-XLN-OOL-PR TO FR INTER-PRT
POR-LT BRN STN-YEL/GLD FLOR-FR FLSH
CUT-FNT ODOR

HW 8 UNIT GAS
INCRS.

DST #2
3362-3371
REC-2 FT MUD
IBLW-WK BLW 1/2
INCH

LS-DK BRN/LT BRN-F-XLN-OOL-PR TO
FR-INTER-PRT/PP/SM VUG POR-LT BRN
STN-PR FSLH CUT-STRNG ODOR-SSFO

HW 15 UNIT GAS
INCREASE

FBLW-WK
BLW-1/2 INCH
15/60/30/60
SIP-29-29.6
IFP-28-29
FFP-28.6-30
HP-1704-1611

LS-TN-F-XLN-OOL-FR OOL-MOLDIC POR-LT
BRN STN-YEL/GLD FLOR IP TO LT BLUE
FLOR-GD STRM CUT-FO-GAS BUB-STRNG
ODOR

GAS DETECTOR
NOT WORKING

DST #3
3372-3383
REC-12 FT MUDDY
H2O
IBLW-WK BLW 1
INCH

LS-LT BRN-F-XLN-TR FOSS-DULL MIN
FLOR-NO VIS POR-NO VIS SHOW

TG. C1-C5
1 10 100 1000
FBLW-FR BLDING
BLW 4 INCHES
15/60/30/60
SIP-970.9-953.5
IFP-37.23-59.29
FFP-44.08-70.9
HP-1715.4-1661.4

LS-OFF WHT/GRY-F-XLN-BRIT-SLI
CHLKY-DNS TR SH -LT BRN IMBD IP-NO VIS
FLOR-NO VIS SHOW

LS A.A.

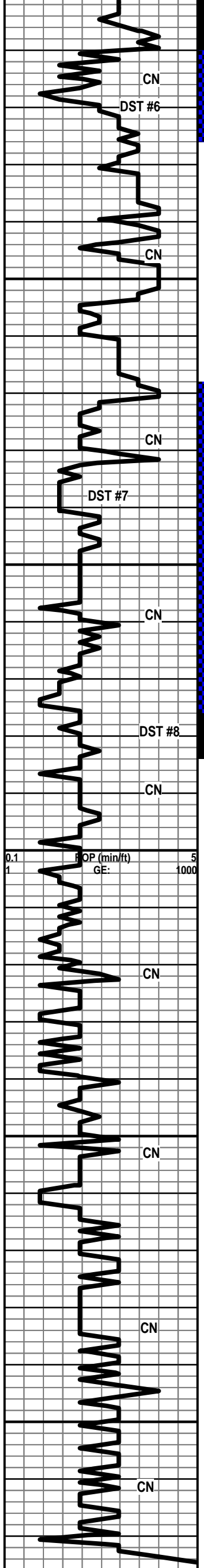
DST #4
3420-3443'
REC 2 FT MUD
IBLW-FR SURF
BLW STEADY
FBLW-DEAD NO
BLW
15/60/30/60
SIP-64-47
IFP-36-37
FFP-36.26-5

LS-TN-F-XLN-SLI CHLKY-BRIT-DNS-TR FRAC
POR-NO VIS FLOR-NO VIS CUT-STRNG ODOR

HW 42 UNIT GAS
INCREASE

LS-OFFWHT-M-XLN-V-OOL-FR INTER-PRT
POR-LT BRN STN-NO VIS FLOR-STRM
CUT-GD ODOR-FC

HW 45 UNIT GAS
INCREASE



LS-OFF WHT-F-XLN--OOL-TR FOSS-PR
OOL-MOLDIC POR-TR LT BRN STN-DULL WHT
MIN FLOR-TR STRM CUT-FNT ODOR (CHLK IN TRAY)

LS-TN-F-XLN-BRIT-CHLKY IP-DNS-NO VIS
FLOR-NO VIS SHOW

LS A.A. (CHLK IN TRAY)

LS-OFF WHT-F-XLN-TR OOL-TR FOSS-PR
OOL-MOLDIC POR TO NO VIS POR-TR LT BRN
STN (1PC)NO VIS FLOR-NO VIS CUT-NO
ODOR

B/KC 3516' (-1516')

SH-RED-SNDY-GUMMY

SHALES-RED-SNDY-GUMMY-W/ CHRT-OFF
WHT-OPQ-FRSH

SHALES AND CHRT A.A.

SHALES-GRN-GRY-RED-SNDY-BLKY-W/
CHRT-OFF WHT-OPQ-OOL-FRSH-LT BRN STN

ARBUCKLE 3554' (-1554')

DOLO-TN-F-GRN-OOL-PR OOL-MOLDIC /VUG
POR-LT BRN STN-NO VIS FLOR-STRM
CUT-FO-GD ODOR

DOLO-OFF WHT-F-M-GRN-PR TO FR
INTER-GRN POR-DK BLK STN W/ TR LT BRN
STN-NO VIS FLOR-FR FLSH CUT-SSFO-FNT
ODOR W/ CHRT-OFF WHT-OPQ-FRSH-TR LT
BRN STN

SAMPLE -MSLTY
SHALES-BLU-RED-GRY-SPLNTY

DOLO-TN-F-GRN-TR INTER-GRN POR-TR LT
BRN STN-NO VIS FLOR-FLSH CUT-NO ODOR
W/ CHRT-OFF WHT-OPQ-FRSH

SHALES-RED-SFT-TR
DOLO-TN-F-GRN-SNDY-FR INTER-GRN/SM
VUG POR-LT BRN STN-NO VIS FLOR-SSFO-W/
CHRT-OFF WHT-OPQ-FRSH

DOLO-OFF WHT-M-GRN-FR INTER-GRN
POR-DULL WHT MIN FLOR-NO VIS SHOW

DOLO-OFF WHT-M-GRN-FR
INTER-GRN/SMVUG POR-DULL WHT MIN
FLOR-NO VIS SHOW W/TR DOLO-LT
GRN-F-XLN-SNDY-GLAU-NO VIS POR-NO VIS
SHOW

DOLO-OFF WHT-F-M-GRN-TR FR INTER-GRN
POR TO NO VIS POR-DULL WHT MIN
FLOR-NO VIS SHOW CHRT-OFF
WHT-OPQ-FRSH

DOLO A.A. TR V SM PYR XLS IMBD

DOLO-OFF WHT-F-XLN-SNDY-HD-DNS

DOLO-OFF WHT-F-XLN-SNDY-HD-DNS

DOLO A.A.

MUD DATA @ 3383'	DST #5 3444'-3460'	FFP-36-36.3 HP-1760.4-1639
WT. 8.95 VIS 68 FIL 9.2	REC-10 FT MUD CUT OIL (10% OIL/90% MUD) 61 FT- 20% GAS/75% OIL/5% MUD	DST #6
MUD DATA @ 3460'	966 FT GIP IBLW--FR BLDING BLW BOB IN 2 MIN FBLW-STRNG BLW BOB INSTANTLY 5/60/45/90	
	SIP-542.4-502.05 IFP-38.5-33.35 FFP-36.3-52 HP-1753.9-1716.5	
	DST #7 3518'-3575'	DST #6 3461-3475
	REC-70 FT VERY LT OIL SPOTTED MUD	REC-5 FTMUDDY H2O (50%MUD/ 50%H2O)
	IBLW-WK BLW BLT TO 3 INCHES FBLW-WK BLW BLT TO 2 1/2 INCHES	IBLW-FR BLDING BLW BLT TO 3 INCHES FBLW-FR BLDING BLW 3.5 INCHES
	30/60/60/90 SIP-903.9-698.12 IFP-61-68 FFP-71-84 HP-1775-1718	30/60/45/90 SIP-504-498 IFP-33-44 FFP-44-53 HP-1715-1673
HW 25 UNIT GAS INCRS		MUD DATA @ 3527'
		WT. 9.1 VIS 50
		DST #8 3576-3583'
		REC-68FT H2O IBLW-FR BLDING BLW BLT TO 3.5 INCHES
		FBLW-FR BLDING BLW BLT TO 3 INCHES
		15/60/45/90 SIP-1125.3-1086.7 IFP-25.3-36 FFP-37-63 HP-1784-1762

