



DRILL STEM TEST REPORT

Prepared For: **F.G. Holl Company**

9431 Central Suit 100
Wichita Kansas 67206

ATTN: Frank Greenbaum

Menzoer 1-22

22-17-15w-Barton

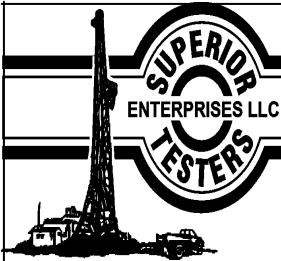
Start Date: 2013.01.16 @ 12:30:00

End Date: 2013.01.16 @ 19:12:23

Job Ticket #: 17407 DST #: 7

Superior Testers Enterprises LLC
PO Box 138 Great Bend KS 67530
1-800-792-6902

Printed: 2013.01.16 @ 19:39:38



DRILL STEM TEST REPORT

F.G. Holl Company
 9431 Central Suit 100
 Wichita Kansas 67206
 ATTN: Frank Greenbaum

22-17-15w-Barton
Menzoer 1-22
 Job Ticket: 17407 **DST#: 7**
 Test Start: 2013.01.16 @ 12:30:00

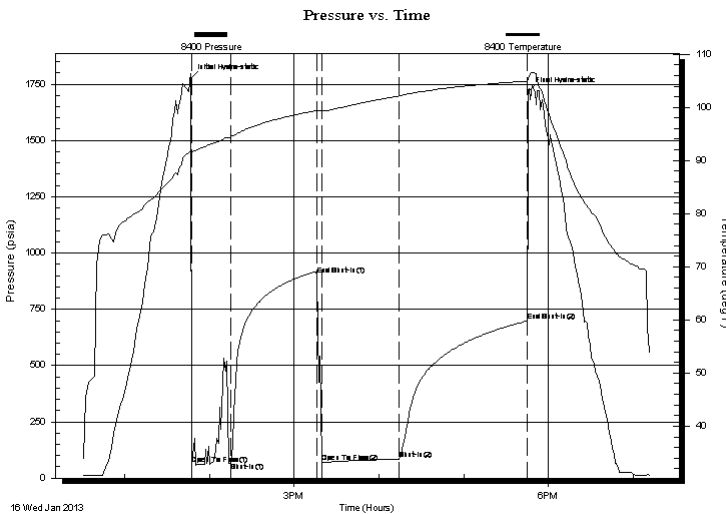
GENERAL INFORMATION:

Formation: **Arbuckle**
 Deviated: No Whipstock: ft (KB)
 Test Type: Conventional Bottom Hole (Initial)
 Time Tool Opened: 13:47:23 Tester: Dustin Ellis
 Time Test Ended: 19:12:23 Unit No: 3315-Great Bend-45
 Interval: **3518.00 ft (KB) To 3575.00 ft (KB) (TVD)** Reference Elevations: 1992.00 ft (KB)
 Total Depth: 3575.00 ft (KB) (TVD) 1984.00 ft (CF)
 Hole Diameter: 7.88 inches Hole Condition: Fair KB to GR/CF: 8.00 ft

Serial #: 8400 Inside
 Press@RunDepth: 83.96 psia @ 3572.37 ft (KB) Capacity: 5000.00 psia
 Start Date: 2013.01.16 End Date: 2013.01.16 Last Calib.: 2013.01.16
 Start Time: 12:30:00 End Time: 19:12:23 Time On Btm: 2013.01.16 @ 13:46:53
 Time Off Btm: 2013.01.16 @ 17:45:53

TEST COMMENT: 1st Open 30 minutes Weak blow blew 3 inches.
 1st Shut in 60 minutes No blow back
 2nd Open 60 minutes Weak blow built to 2.5 inches.
 2nd Shut in 90 minutes No blow back

PRESSURE SUMMARY



Time (Min.)	Pressure (psia)	Temp (deg F)	Annotation
0	1775.56	91.95	Initial Hydro-static
1	60.99	91.54	Open To Flow (1)
29	68.31	94.45	Shut-In(1)
90	903.94	99.43	End Shut-In(1)
93	70.08	99.23	Open To Flow (2)
148	83.96	102.15	Shut-In(2)
238	698.12	104.94	End Shut-In(2)
239	1718.08	105.44	Final Hydro-static

Recovery

Length (ft)	Description	Volume (bbl)
71.00	Very very lightly oil spotted mud 100% mu	1.00
0.00	100% mud	0.00

Gas Rates

Choke (inches)	Pressure (psia)	Gas Rate (Mcf/d)



DRILL STEM TEST REPORT

F.G. Holl Company

22-17-15w-Barton

9431 Central Suit 100
Wichita Kansas 67206

Menzoer 1-22

Job Ticket: 17407

DST#: 7

ATTN: Frank Greenbaum

Test Start: 2013.01.16 @ 12:30:00

GENERAL INFORMATION:

Formation: **Arbuckle**

Deviated: No Whipstock: ft (KB)

Time Tool Opened: 13:47:23

Time Test Ended: 19:12:23

Test Type: Conventional Bottom Hole (Initial)

Tester: Dustin Ellis

Unit No: 3315-Great Bend-45

Interval: 3518.00 ft (KB) To 3575.00 ft (KB) (TVD)

Reference Elevations: 1992.00 ft (KB)

Total Depth: 3575.00 ft (KB) (TVD)

1984.00 ft (CF)

Hole Diameter: 7.88 inches Hole Condition: Fair

KB to GR/CF: 8.00 ft

Serial #: 8405 Inside

Press@RunDepth: 698.48 psia @ 3571.37 ft (KB)

Capacity: 5000.00 psia

Start Date: 2013.01.16 End Date: 2013.01.16

Last Calib.: 2013.01.16

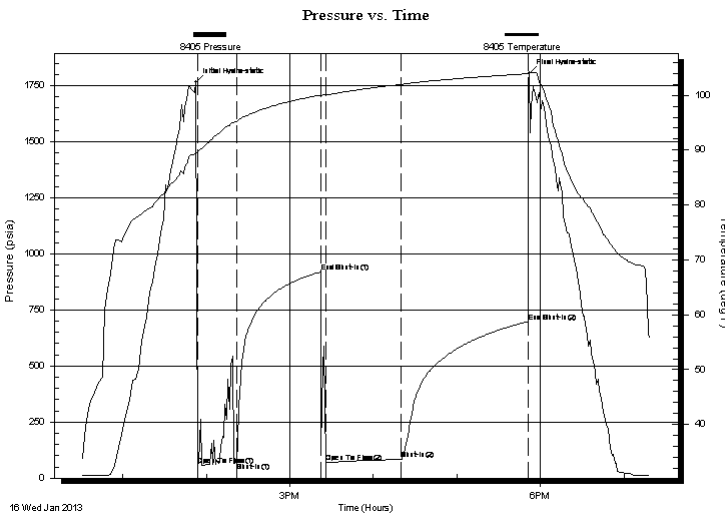
Start Time: 12:30:00 End Time: 19:18:30

Time On Btm: 2013.01.16 @ 13:52:30

Time Off Btm: 2013.01.16 @ 17:52:00

TEST COMMENT: 1st Open 30 minutes Weak blow blew 3 inches.
1st Shut in 60 minutes No blow back
2nd Open 60 minutes Weak blow built to 2.5 inches.
2nd Shut in 90 minutes No blow back

PRESSURE SUMMARY



Time (Min.)	Pressure (psia)	Temp (deg F)	Annotation
0	1765.49	89.31	Initial Hydro-static
1	58.93	89.72	Open To Flow (1)
29	68.45	95.25	Shut-In(1)
90	919.47	100.02	End Shut-In(1)
93	69.57	100.02	Open To Flow (2)
148	83.41	101.98	Shut-In(2)
239	698.48	103.92	End Shut-In(2)
240	1805.69	104.13	Final Hydro-static

Recovery

Length (ft)	Description	Volume (bbl)
71.00	Very very lightly oil spotted mud 100% mu	1.00
0.00	100% mud	0.00

Gas Rates

	Choke (inches)	Pressure (psia)	Gas Rate (Mcf/d)



DRILL STEM TEST REPORT

TOOL DIAGRAM

F.G. Holl Company

22-17-15w-Barton

9431 Central Suit 100
Wichita Kansas 67206

Menzoer 1-22

Job Ticket: 17407

DST#: 7

ATTN: Frank Greenbaum

Test Start: 2013.01.16 @ 12:30:00

Tool Information

Drill Pipe:	Length: 3500.00 ft	Diameter: 3.80 inches	Volume: 49.10 bbl	Tool Weight: 2000.00 lb
Heavy Wt. Pipe:	Length: 0.00 ft	Diameter: 0.00 inches	Volume: 0.00 bbl	Weight set on Packer: 20000.00 lb
Drill Collar:	Length: 0.00 ft	Diameter: 0.00 inches	Volume: 0.00 bbl	Weight to Pull Loose: 70000.00 lb
			<u>Total Volume: 49.10 bbl</u>	Tool Chased 0.00 ft
Drill Pipe Above KB:	10.00 ft			String Weight: Initial 53000.00 lb
Depth to Top Packer:	3518.00 ft			Final 54000.00 lb
Depth to Bottom Packer:	ft			
Interval between Packers:	57.37 ft			
Tool Length:	85.37 ft			
Number of Packers:	2	Diameter: 6.75 inches		

Tool Comments:

Tool Description	Length (ft)	Serial No.	Position	Depth (ft)	Accum. Lengths
------------------	-------------	------------	----------	------------	----------------

Shut-In Tool	5.00			3495.00	
Hydraulic Tool	5.00			3500.00	
Safety Joint	2.00			3502.00	
Jars	6.00			3508.00	
Packer	5.00			3513.00	28.00 Bottom Of Top Packer
Packer	5.00			3518.00	
Anchor	5.00			3523.00	
Change Over Sub	0.75			3523.75	
Drill Pipe	30.87			3554.62	
Change Over Sub	0.75			3555.37	
Anchor	15.00			3570.37	
Recorder	1.00	8405	Inside	3571.37	
Recorder	1.00	8400	Inside	3572.37	
Bullnose	3.00			3575.37	57.37 Bottom Packers & Anchor

Total Tool Length: 85.37



DRILL STEM TEST REPORT

FLUID SUMMARY

F.G. Holl Company

22-17-15w-Barton

9431 Central Suit 100
Wichita Kansas 67206

Menzoer 1-22

Job Ticket: 17407

DST#: 7

ATTN: Frank Greenbaum

Test Start: 2013.01.16 @ 12:30:00

Mud and Cushion Information

Mud Type: Gel Chem
Mud Weight: 9.00 lb/gal
Viscosity: 54.00 sec/qt
Water Loss: 8.80 in³
Resistivity: ohm.m
Salinity: 10500.00 ppm
Filter Cake: 1.00 inches

Cushion Type:
Cushion Length: ft
Cushion Volume: bbl
Gas Cushion Type:
Gas Cushion Pressure: psia

Oil API: deg API
Water Salinity: ppm

Recovery Information

Recovery Table

Length ft	Description	Volume bbl
71.00	Very very lightly oil spotted mud 100%mu	0.996
0.00	100% mud	0.000

Total Length: 71.00 ft Total Volume: 0.996 bbl

Num Fluid Samples: 0

Num Gas Bombs: 0

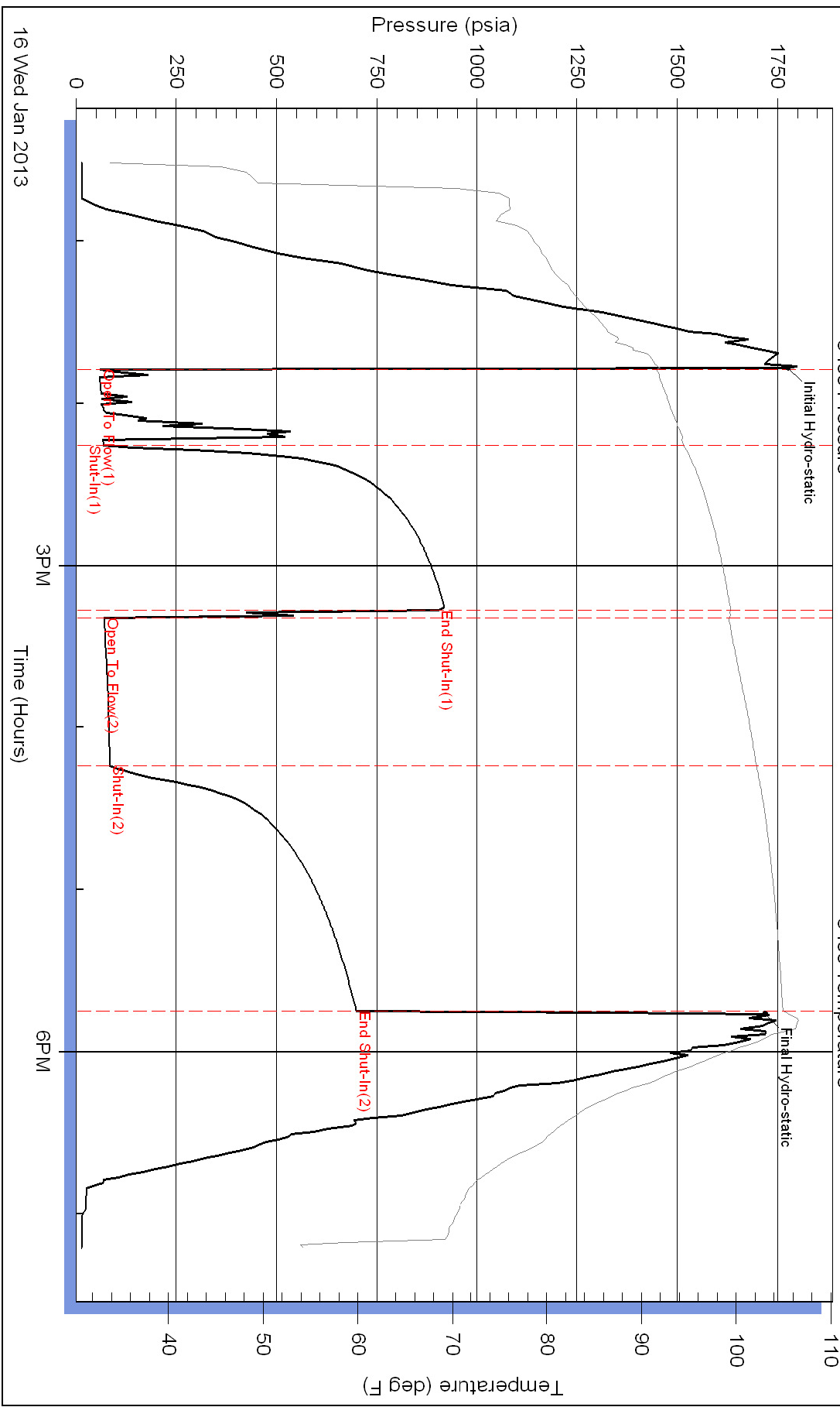
Serial #:

Laboratory Name:

Laboratory Location:

Recovery Comments:

Pressure vs. Time



Pressure vs. Time

