



DRILL STEM TEST REPORT

Prepared For: **RJM Company**

Po Box 256 Claflin Kansas
67525

ATTN: Jim Musgrove

Boys Town Unit #2

32-17s-10w-Barton

Start Date: 2013.01.19 @ 09:50:00

End Date: 2013.01.19 @ 14:34:02

Job Ticket #: 17410 DST #: 2

Superior Testers Enterprises LLC
PO Box 138 Great Bend KS 67530
1-800-792-6902

Printed: 2013.01.19 @ 14:42:28

RJM Company
32-17s-10w-Barton
Boys Town Unit #2
DST # 2
Lansing D-E-F
2013.01.19



DRILL STEM TEST REPORT

RJM Company
 Po Box 256 Claflin Kansas
 67525
 ATTN: Jim Musgrove

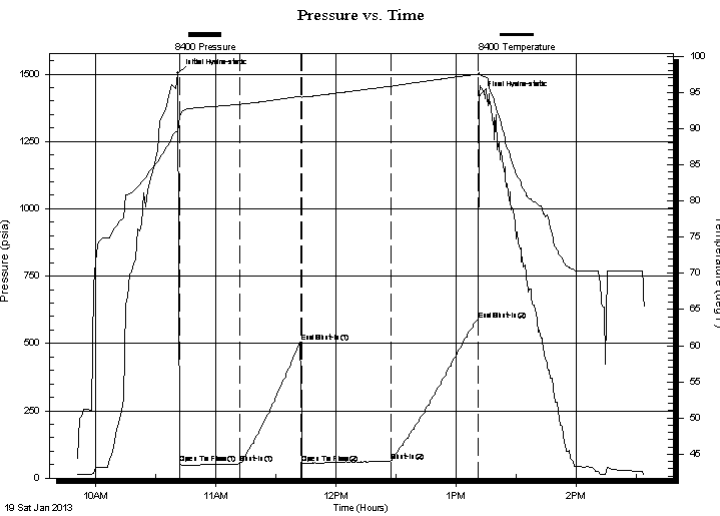
32-17s-10w-Barton
Boys Town Unit #2
 Job Ticket: 17410 **DST#: 2**
 Test Start: 2013.01.19 @ 09:50:00

GENERAL INFORMATION:

Formation: **Lansing D-E-F**
 Deviated: No Whipstock: ft (KB)
 Time Tool Opened: 10:42:09
 Time Test Ended: 14:34:02
 Interval: **2996.00 ft (KB) To 3044.00 ft (KB) (TVD)**
 Total Depth: 3044.00 ft (KB) (TVD)
 Hole Diameter: 7.88 inches Hole Condition: Fair
 Test Type: Conventional Bottom Hole (Initial)
 Tester: Dustin Ellis
 Unit No: 3315-Great Bend-60
 Reference Elevations: 1798.00 ft (KB)
 1790.00 ft (CF)
 KB to GR/CF: 8.00 ft

Serial #: 8400 Outside
 Press@RunDepth: 62.11 psia @ 3041.20 ft (KB) Capacity: 5000.00 psia
 Start Date: 2013.01.19 End Date: 2013.01.19 Last Calib.: 2013.01.19
 Start Time: 09:50:00 End Time: 14:34:02 Time On Btm: 2013.01.19 @ 10:41:09
 Time Off Btm: 2013.01.19 @ 13:11:39

TEST COMMENT: 1st Open 30 minutes Strong building blow blew bottom bucket 6 minutes.
 1st Shut in 30 minutes No blow back
 2nd Open 45 minutes Strong building blow blew off bottom instantly.
 2nd Shut in 45 minutes No blow back



PRESSURE SUMMARY

Time (Min.)	Pressure (psia)	Temp (deg F)	Annotation
0	1503.42	89.62	Initial Hydro-static
1	53.98	91.65	Open To Flow (1)
31	53.32	93.34	Shut-In(1)
61	503.94	94.44	End Shut-In(1)
62	54.60	94.33	Open To Flow (2)
107	62.11	95.84	Shut-In(2)
150	588.02	97.53	End Shut-In(2)
151	1418.24	97.75	Final Hydro-static

Recovery

Length (ft)	Description	Volume (bbl)
40.00	Oil cut mud 35% Oil 65% Mud	0.56

Gas Rates

Choke (inches)	Pressure (psia)	Gas Rate (Mcf/d)



DRILL STEM TEST REPORT

RJM Company
 Po Box 256 Claflin Kansas
 67525
 ATTN: Jim Musgrove

32-17s-10w-Barton
Boys Town Unit #2
 Job Ticket: 17410 **DST#: 2**
 Test Start: 2013.01.19 @ 09:50:00

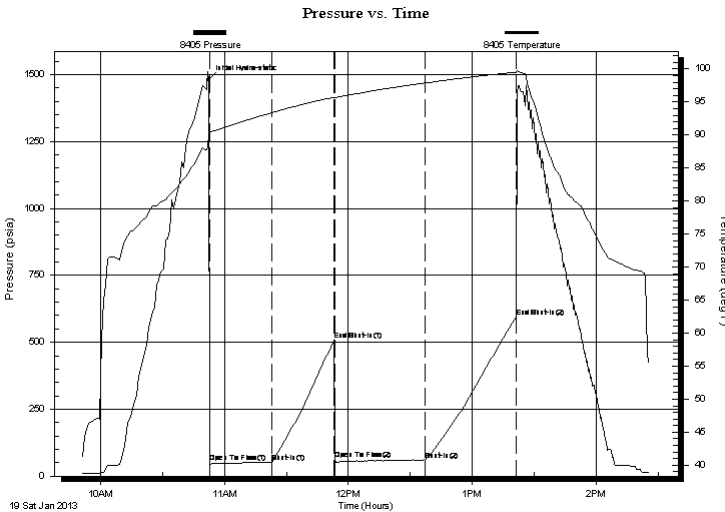
GENERAL INFORMATION:

Formation: **Lansing D-E-F**
 Deviated: No Whipstock: ft (KB)
 Test Type: Conventional Bottom Hole (Initial)
 Time Tool Opened: 10:42:09 Tester: Dustin Ellis
 Time Test Ended: 14:34:02 Unit No: 3315-Great Bend-60
 Interval: **2996.00 ft (KB) To 3044.00 ft (KB) (TVD)** Reference Elevations: 1798.00 ft (KB)
 Total Depth: 3044.00 ft (KB) (TVD) 1790.00 ft (CF)
 Hole Diameter: 7.88 inches Hole Condition: Fair KB to GR/CF: 8.00 ft

Serial #: 8405 Inside
 Press@RunDepth: 592.98 psia @ 3040.20 ft (KB) Capacity: 5000.00 psia
 Start Date: 2013.01.19 End Date: 2013.01.19 Last Calib.: 2013.01.19
 Start Time: 09:50:22 End Time: 14:25:52 Time On Btm: 2013.01.19 @ 10:52:22
 Time Off Btm:

TEST COMMENT: 1st Open 30 minutes Strong building blow blew bottom bucket 6 minutes.
 1st Shut in 30 minutes No blow back
 2nd Open 45 minutes Strong building blow blew off bottom instantly.
 2nd Shut in 45 minutes No blow back

PRESSURE SUMMARY



Time (Min.)	Pressure (psia)	Temp (deg F)	Annotation
0	1481.46	90.14	Initial Hydro-static
1	52.08	90.34	Open To Flow (1)
31	51.64	93.38	Shut-In(1)
61	506.70	95.72	End Shut-In(1)
61	61.27	95.64	Open To Flow (2)
105	60.22	97.89	Shut-In(2)
149	592.98	99.54	End Shut-In(2)

Recovery

Length (ft)	Description	Volume (bbl)
40.00	Oil cut mud 35% Oil 65% Mud	0.56

Gas Rates

Choke (inches)	Pressure (psia)	Gas Rate (Mcf/d)



DRILL STEM TEST REPORT

TOOL DIAGRAM

RJM Company
 Po Box 256 Claflin Kansas
 67525
 A T T N : Jim Musgrove

32-17s-10w-Barton
Boys Town Unit #2
 Job Ticket: 17410 **DST#:2**
 Test Start: 2013.01.19 @ 09:50:00

Tool Information

Drill Pipe:	Length: 2995.00 ft	Diameter: 3.80 inches	Volume: 42.01 bbl	Tool Weight: 2000.00 lb
Heavy Wt. Pipe:	Length: 0.00 ft	Diameter: 0.00 inches	Volume: 0.00 bbl	Weight set on Packer: 20000.00 lb
Drill Collar:	Length: 0.00 ft	Diameter: 0.00 inches	Volume: 0.00 bbl	Weight to Pull Loose: 34000.00 lb
			<u>Total Volume: 42.01 bbl</u>	Tool Chased 0.00 ft
Drill Pipe Above KB:	19.00 ft			String Weight: Initial 30000.00 lb
Depth to Top Packer:	2996.00 ft			Final 32000.00 lb
Depth to Bottom Packer:	ft			
Interval between Packers:	48.20 ft			
Tool Length:	68.20 ft			
Number of Packers:	2	Diameter: 6.75 inches		

Tool Comments:

Tool Description	Length (ft)	Serial No.	Position	Depth (ft)	Accum. Lengths
-------------------------	--------------------	-------------------	-----------------	-------------------	-----------------------

Shut-In Tool	5.00			2981.00	
Hydraulic Tool	5.00			2986.00	
Packer	5.00			2991.00	20.00 Bottom Of Top Packer
Packer	5.00			2996.00	
Anchor	5.00			3001.00	
Change Over Sub	0.75			3001.75	
Drill Pipe	31.70			3033.45	
Change Over Sub	0.75			3034.20	
Anchor	5.00			3039.20	
Recorder	1.00	8405	Inside	3040.20	
Recorder	1.00	8400	Outside	3041.20	
Bullnose	3.00			3044.20	48.20 Bottom Packers & Anchor

Total Tool Length: 68.20



DRILL STEM TEST REPORT

FLUID SUMMARY

RJM Company
Po Box 256 Claflin Kansas
67525
ATTN: Jim Musgrove

32-17s-10w-Barton
Boys Town Unit #2
Job Ticket: 17410 **DST#: 2**
Test Start: 2013.01.19 @ 09:50:00

Mud and Cushion Information

Mud Type:	Gel Chem	Cushion Type:		Oil API:	deg API
Mud Weight:	8.00 lb/gal	Cushion Length:	ft	Water Salinity:	ppm
Viscosity:	52.00 sec/qt	Cushion Volume:	bbl		
Water Loss:	7.90 in ³	Gas Cushion Type:			
Resistivity:	ohm.m	Gas Cushion Pressure:	psia		
Salinity:	5200.00 ppm				
Filter Cake:	1.00 inches				

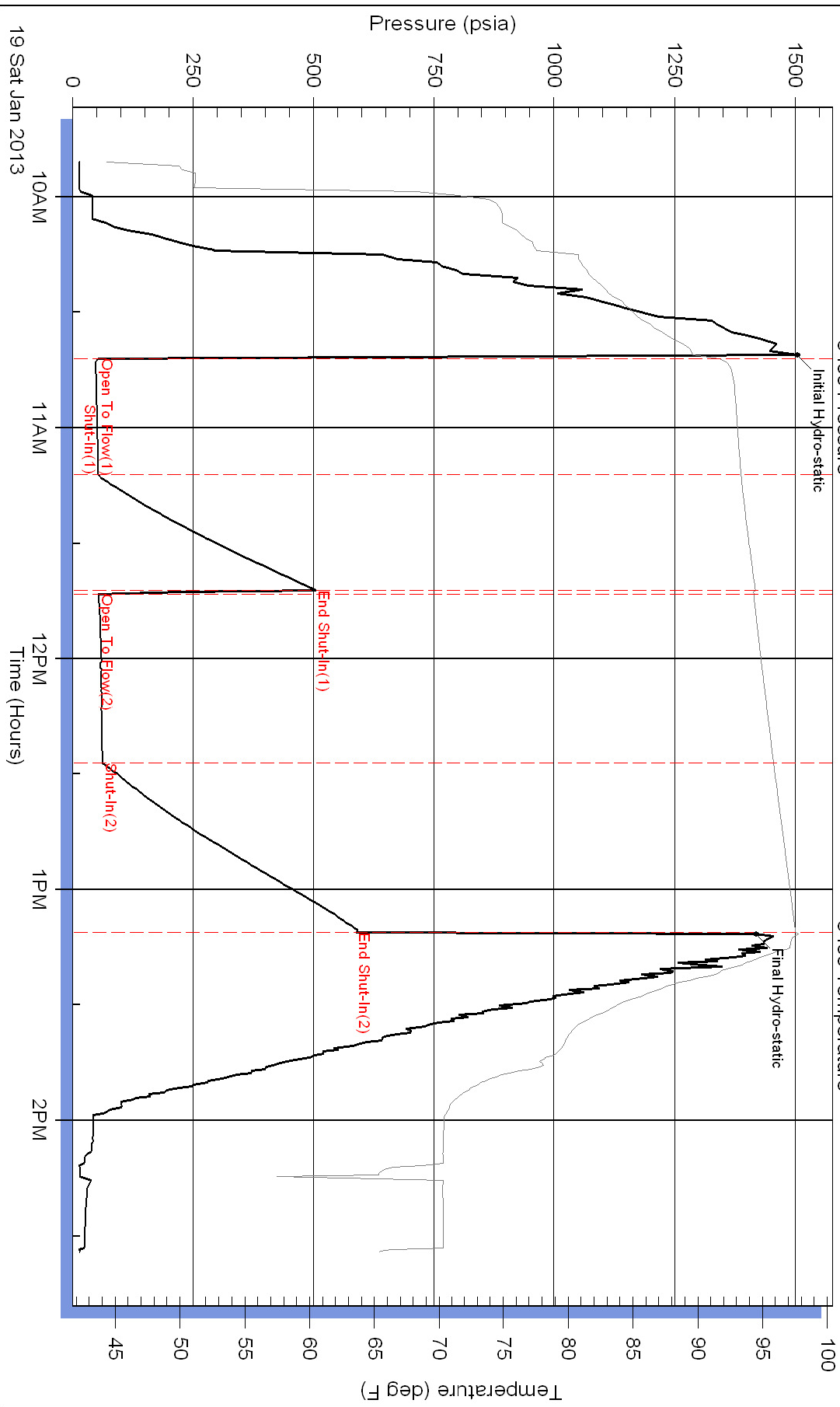
Recovery Information

Recovery Table

Length ft	Description	Volume bbl
40.00	Oil cut mud 35% Oil 65% Mud	0.561

Total Length: 40.00 ft Total Volume: 0.561 bbl
Num Fluid Samples: 0 Num Gas Bombs: 0 Serial #:
Laboratory Name: Laboratory Location:
Recovery Comments:

Pressure vs. Time



Pressure vs. Time

