



## DRILL STEM TEST REPORT

Prepared For: **RJM Company**

Po Box 256 Claflin Kansas  
67525

ATTN: Jim Musgrove

### **Boys Town Unit #2**

### **32-17s-10w-Barton**

Start Date: 2013.01.21 @ 07:40:00

End Date: 2013.01.21 @ 13:10:30

Job Ticket #: 17413                      DST #: 5

Superior Testers Enterprises LLC  
PO Box 138 Great Bend KS 67530  
1-800-792-6902

Printed: 2013.01.21 @ 13:38:19



# DRILL STEM TEST REPORT

RJM Company  
 Po Box 256 Claflin Kansas  
 67525  
 ATTN: Jim Musgrove

**32-17s-10w-Barton**  
**Boys Town Unit #2**  
 Job Ticket: 17413 **DST#: 5**  
 Test Start: 2013.01.21 @ 07:40:00

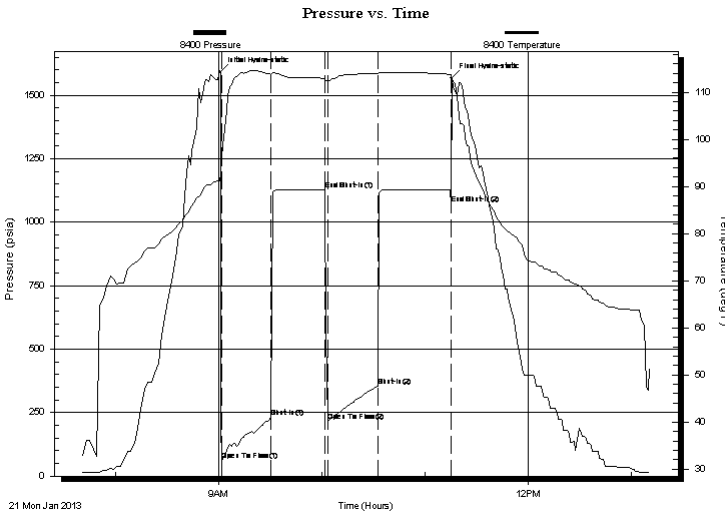
## GENERAL INFORMATION:

Formation: **Arbuckle**  
 Deviated: No Whipstock: ft (KB)  
 Test Type: Conventional Bottom Hole (Initial)  
 Time Tool Opened: 09:02:00 Tester: Dustin Ellis  
 Time Test Ended: 13:10:30 Unit No: 3315-Great Bend-60  
 Interval: **3211.00 ft (KB) To 3251.00 ft (KB) (TVD)** Reference Elevations: 1798.00 ft (KB)  
 Total Depth: 3251.00 ft (KB) (TVD) 1790.00 ft (CF)  
 Hole Diameter: 7.88 inches Hole Condition: Fair KB to GR/CF: 8.00 ft

**Serial #: 8400 Outside**  
 Press@RunDepth: 355.72 psia @ 3248.00 ft (KB) Capacity: 5000.00 psia  
 Start Date: 2013.01.21 End Date: 2013.01.21 Last Calib.: 2013.01.21  
 Start Time: 07:40:00 End Time: 13:10:30 Time On Btm: 2013.01.21 @ 09:01:00  
 Time Off Btm: 2013.01.21 @ 11:15:30

**TEST COMMENT:** 1st Open 30 minutes Strong building blow blew bottom bucket 4 minutes.  
 1st Shut in 30 minutes No blow back.  
 2nd Open 30 minutes Strong building blow blew bottom bucket 8 minutes.  
 2nd Shut in 45 minutes No blow back.

## PRESSURE SUMMARY



Time (Min.)	Pressure (psia)	Temp (deg F)	Annotation
0	1592.74	92.48	Initial Hydro-static
1	62.36	96.11	Open To Flow (1)
30	230.54	113.82	Shut-In(1)
61	1128.99	112.94	End Shut-In(1)
63	217.60	112.41	Open To Flow (2)
92	355.72	113.93	Shut-In(2)
134	1072.44	113.77	End Shut-In(2)
135	1569.69	112.62	Final Hydro-static

## Recovery

Length (ft)	Description	Volume (bbl)
340.00	Gassy oil cut mud	4.77
0.00	Gas 40% Oil 25% Mud 35%	0.00
170.00	Gassy oil cut muddy w water	2.38
0.00	Gas 5% Oil 45% Mud 45% Water 5%	0.00
170.00	Gassy oil cut muddy w water	2.38
0.00	Gas 10% Oil 40% Mud 20% Water 30%	0.00

## Gas Rates

Choke (inches)	Pressure (psia)	Gas Rate (Mcf/d)



# DRILL STEM TEST REPORT

RJM Company  
 Po Box 256 Claflin Kansas  
 67525  
 ATTN: Jim Musgrove

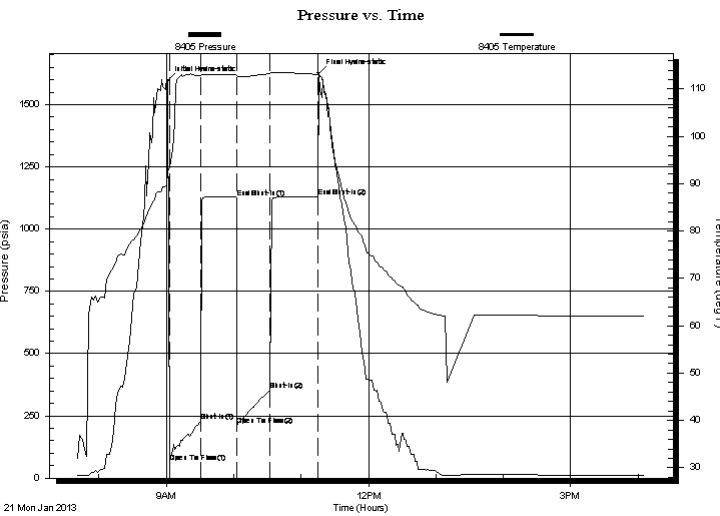
**32-17s-10w-Barton**  
**Boys Town Unit #2**  
 Job Ticket: 17413 **DST#: 5**  
 Test Start: 2013.01.21 @ 07:40:00

## GENERAL INFORMATION:

Formation: **Arbuckle**  
 Deviated: No Whipstock: ft (KB)  
 Test Type: Conventional Bottom Hole (Initial)  
 Time Tool Opened: 09:02:00 Tester: Dustin Ellis  
 Time Test Ended: 13:10:30 Unit No: 3315-Great Bend-60  
 Interval: **3211.00 ft (KB) To 3251.00 ft (KB) (TVD)** Reference Elevations: 1798.00 ft (KB)  
 Total Depth: 3251.00 ft (KB) (TVD) 1790.00 ft (CF)  
 Hole Diameter: 7.88 inches Hole Condition: Fair KB to GR/CF: 8.00 ft

**Serial #: 8405 Inside**  
 Press@RunDepth: 1129.37 psia @ 3247.00 ft (KB) Capacity: 5000.00 psia  
 Start Date: 2013.01.21 End Date: 2013.01.21 Last Calib.: 2013.01.21  
 Start Time: 07:40:00 End Time: 16:24:53 Time On Btm: 2013.01.21 @ 09:01:30  
 Time Off Btm: 2013.01.21 @ 11:15:30

**TEST COMMENT:** 1st Open 30 minutes Strong building blow blew bottom bucket 4 minutes.  
 1st Shut in 30 minutes No blow back.  
 2nd Open 30 minutes Strong building blow blew bottom bucket 8 minutes.  
 2nd Shut in 45 minutes No blow back.



## PRESSURE SUMMARY

Time (Min.)	Pressure (psia)	Temp (deg F)	Annotation
0	1595.39	92.74	Initial Hydro-static
1	63.12	93.45	Open To Flow (1)
29	228.47	112.84	Shut-In(1)
61	1127.55	112.94	End Shut-In(1)
62	213.66	112.74	Open To Flow (2)
91	354.24	113.25	Shut-In(2)
133	1129.37	113.11	End Shut-In(2)
134	1626.54	113.25	Final Hydro-static

## Recovery

Length (ft)	Description	Volume (bbl)
340.00	Gassy oil cut mud	4.77
0.00	Gas 40% Oil 25% Mud 35%	0.00
170.00	Gassy oil cut muddy w ater	2.38
0.00	Gas 5% Oil 45% Mud 45% Water 5%	0.00
170.00	Gassy oil cut muddy w ater	2.38
0.00	Gas 10% Oil 40% Mud 20% Water 30%	0.00

## Gas Rates

Choke (inches)	Pressure (psia)	Gas Rate (Mcf/d)



# DRILL STEM TEST REPORT

**TOOL DIAGRAM**

RJM Company  
 Po Box 256 Claflin Kansas  
 67525  
 ATTN: Jim Musgrove

**32-17s-10w-Barton**  
**Boys Town Unit #2**  
 Job Ticket: 17413      **DST#: 5**  
 Test Start: 2013.01.21 @ 07:40:00

**Tool Information**

Drill Pipe:	Length: 3213.00 ft	Diameter: 3.80 inches	Volume: 45.07 bbl	Tool Weight: 2000.00 lb
Heavy Wt. Pipe:	Length: 0.00 ft	Diameter: 0.00 inches	Volume: 0.00 bbl	Weight set on Packer: 20000.00 lb
Drill Collar:	Length: 0.00 ft	Diameter: 0.00 inches	Volume: 0.00 bbl	Weight to Pull Loose: 34000.00 lb
			<u>Total Volume: 45.07 bbl</u>	Tool Chased 0.00 ft
Drill Pipe Above KB:	22.00 ft			String Weight: Initial 33000.00 lb
Depth to Top Packer:	3211.00 ft			Final 34000.00 lb
Depth to Bottom Packer:	ft			
Interval between Packers:	40.00 ft			
Tool Length:	60.00 ft			
Number of Packers:	2	Diameter: 6.75 inches		

Tool Comments:

<b>Tool Description</b>	<b>Length (ft)</b>	<b>Serial No.</b>	<b>Position</b>	<b>Depth (ft)</b>	<b>Accum. Lengths</b>
-------------------------	--------------------	-------------------	-----------------	-------------------	-----------------------

Shut-In Tool	5.00			3196.00	
Hydraulic Tool	5.00			3201.00	
Packer	5.00			3206.00	20.00      Bottom Of Top Packer
Packer	5.00			3211.00	
Anchor	35.00			3246.00	
Recorder	1.00	8405	Inside	3247.00	
Recorder	1.00	8400	Outside	3248.00	
Bullnose	3.00			3251.00	40.00      Bottom Packers & Anchor

**Total Tool Length: 60.00**



# DRILL STEM TEST REPORT

**FLUID SUMMARY**

RJM Company  
 Po Box 256 Claflin Kansas  
 67525  
 A TTN: Jim Musgrove

**32-17s-10w-Barton**  
**Boys Town Unit #2**  
 Job Ticket: 17413      **DST#: 5**  
 Test Start: 2013.01.21 @ 07:40:00

## Mud and Cushion Information

Mud Type: Gel Chem	Cushion Type:	Oil API:	deg API
Mud Weight: 9.00 lb/gal	Cushion Length: ft	Water Salinity:	ppm
Viscosity: 48.00 sec/qt	Cushion Volume: bbl		
Water Loss: 8.80 in <sup>3</sup>	Gas Cushion Type:		
Resistivity: ohm.m	Gas Cushion Pressure: psia		
Salinity: 6800.00 ppm			
Filter Cake: 1.00 inches			

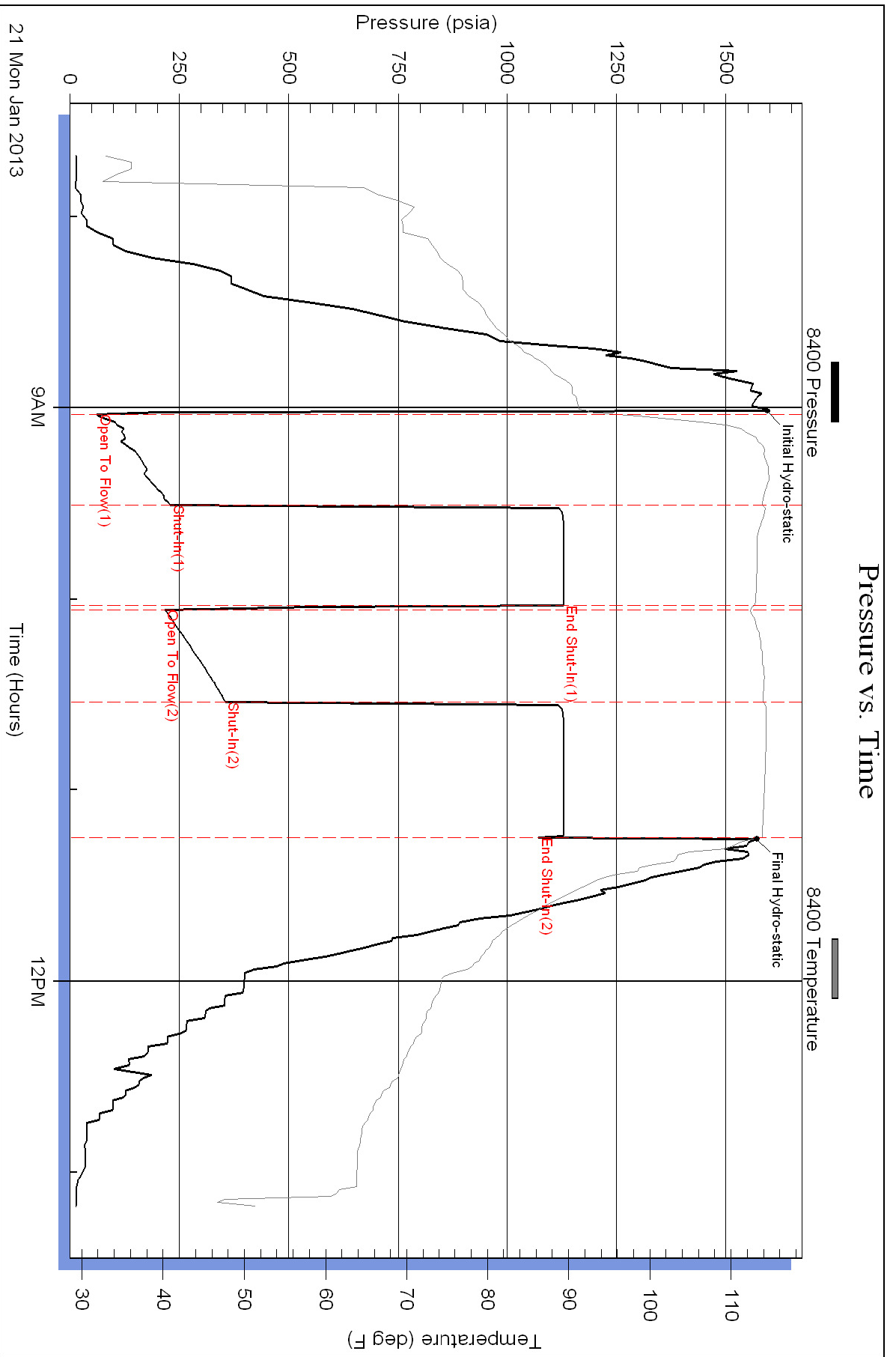
## Recovery Information

Recovery Table

Length ft	Description	Volume bbl
340.00	Gassy oil cut mud	4.769
0.00	Gas 40% Oil 25% Mud 35%	0.000
170.00	Gassy oil cut muddy w ater	2.385
0.00	Gas 5% Oil 45% Mud 45% Water 5%	0.000
170.00	Gassy oil cut muddy w ater	2.385
0.00	Gas 10% Oil 40% Mud 20% Water 30%	0.000

Total Length: 680.00 ft      Total Volume: 9.539 bbl  
 Num Fluid Samples: 0      Num Gas Bombs: 0      Serial #:  
 Laboratory Name:      Laboratory Location:  
 Recovery Comments:

### Pressure vs. Time



### Pressure vs. Time

