

OPERATOR

Company: 6G TWISTER, INC.
 Address: PO BOX 1565
 GILLETTE, WY 82717

Contact Geologist: LEE GREEN
 Contact Phone Nbr: 307-682-7380
 Well Name: CoCo # 1
 Location: NW SE SW SW
 Pool: WILDCAT
 State: KANSAS

API: 15-063-22,092-00-00
 Field: UNNAMED
 Country: USA

Scale 1:240 Imperial

Well Name: CoCo # 1
 Surface Location: NW SE SW SW
 Bottom Location:
 API: 15-063-22,092-00-00
 License Number: 34515
 Spud Date: 3/16/2013 Time: 7:15 PM
 Region: GOVE COUNTY
 Drilling Completed: 3/24/2013 Time: 7:30 AM
 Surface Coordinates: 500' FSL & 675' FWL
 Bottom Hole Coordinates:
 Ground Elevation: 2615.00ft
 K.B. Elevation: 2624.00ft
 Logged Interval: 3600.00ft To: 4240.00ft
 Total Depth: 4240.00ft
 Formation: LANSING-KANSAS CITY
 Drilling Fluid Type: CHEMICAL/FRESH WATER GEL

SURFACE CO-ORDINATES

Well Type: Vertical
 Longitude: Latitude:
 N/S Co-ord: 500' FSL
 E/W Co-ord: 675' FWL

LOGGED BY

Company: SOLUTIONS CONSULTING, INC.
 Address: 108 W 35TH
 HAYS, KS 67601

Phone Nbr: (785) 639-1337
 Logged By: Geologist Name: HERB DEINES

CONTRACTOR

Contractor: INTEGRITY DRILLING CO LLC
 Rig #: 11
 Rig Type: MUD ROTARY
 Spud Date: 3/16/2013 Time: 7:15 PM
 TD Date: 3/24/2013 Time: 7:30 AM
 Rig Release: 3/25/2013 Time: 11:00 PM

ELEVATIONS

K.B. Elevation: 2624.00ft Ground Elevation: 2615.00ft
 K.B. to Ground: 9.00ft

NOTES

RECOMMENDATION TO PLUG AND ABANDON WELL BASED ON NEGATIVE RESULTS OF DST # 1 OVER

FORMATION TOPS SUMMARY AND CHRONOLOGY OF DAILY ACTIVITY


CoCo # 1	Jamison #A-1
500' FSL & 6756' FWL, SW/4	N2 NW NE
Sec. 25-11s-26w	Sec. 25-11s-26w
2615' GL 2624' KB	Reference Well

<u>FORMATION</u>	<u>SAMPLE TOPS</u>	<u>LOG TOPS</u>	<u>LOG TOPS</u>	
Anhydrite	2193+ 431	2190+ 434	<i>+429</i>	<i>-5</i>
B-Anhydrite	2234+ 390	2228+ 396	<i>+387</i>	<i>-9</i>
Topeka	3668-1044	3660-1036	<i>-1040</i>	<i>-4</i>
Heebner Shale	3884-1260	3882-1258	<i>-1258</i>	<i>0</i>
Toronto	3903-1279	3905-1281	<i>-1277</i>	<i>+4</i>
LKC	3920-1296	3920-1296	<i>-1294</i>	<i>+2</i>
BKC	4179-1555	4174-1550	<i>-1548</i>	<i>+2</i>
RTD	4240-1616		<i>-2111</i>	
LTD		4241-1617		

SUMMARY OF DAILY ACTIVITY

- 3-16-13** RU, spud 7:15PM
- 3-17-13** 249', set 8 5/8" surface casing to 234' w/ 175 sacks Common, 2%gel, 3%CC, plg dn 4:15AM, slope survey ¼ degree, WOC 8 hrs.
- 3-18-13** 1170', lost circulation in upper Dakota, mix mud and hulls, drilling
- 3-19-13** 2103', drilling
- 3-20-13** 2860', lost circulation at 2860', mix mud, displaced at 2860'
- 3-21-13** 3099', drilling
- 3-22-13** 3596', drilling
- 3-23-13** 3915', short trip @3915', snow, blowing snow and wind in PM
- 3-24-13** 4232' drilling, RTD @ 4240' @ 7:30AM, mini short trip, CCH 1 ½ hrs, logs, start DST # 1 4050'-3240' LKC "H" to RTD
- 3-25-13** 4240', finish pulling DST # 1, P&A

DST # 1 CONVENTIONAL TEST FROM BASE OF "G" ZONE TO RTD

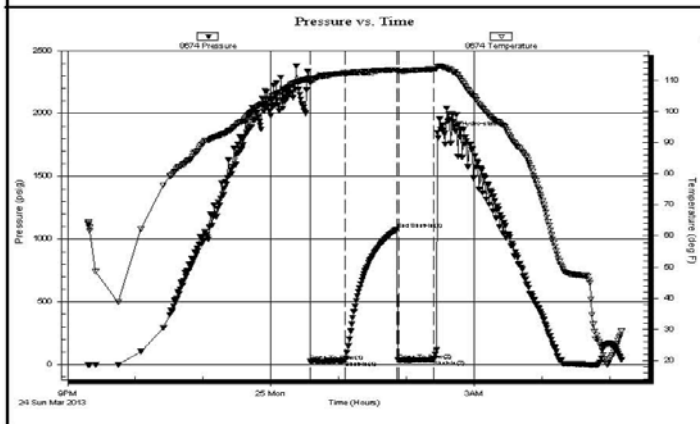
 TRILOBITE TESTING, INC.	DRILL STEM TEST REPORT	
	6 G Twister Inc. P.o Box 1565 Gillette WY. 82717 ATTN: Herb Deines	25-11s-26w Gove Co. KS CoCo #1 Job Ticket: 49795 Test Start: 2013.03.24 @ 21:18:00

GENERAL INFORMATION:

Formation: LKC "H-K"	Test Type: Conventional Bottom Hole (Initial)
Deviated: No Whipstock: ft (KB)	Tester: Will MacLean
Time Tool Opened: 00:35:10	Unit No: 58
Time Test Ended: 05:10:39	Reference Elevations: 2645.00 ft (KB)
Interval: 4050.00 ft (KB) To 4241.00 ft (KB) (TVD)	2636.00 ft (CF)
Total Depth: 4241.00 ft (KB) (TVD)	KB to GR/CF: 9.00 ft
Hole Diameter: 7.88 inches	Hole Condition: Good

Serial #: 8674	Inside	Capacity: 8000.00 psig
Press@RunDepth: 31.15 psig @ 4051.00 ft (KB)	Start Date: 2013.03.24	Last Calib.: 2013.03.25
Start Time: 21:18:00	End Date: 2013.03.25	Time On Btm: 2013.03.25 @ 00:34:55
	End Time: 05:10:39	Time Off Btm: 2013.03.25 @ 02:27:39

TEST COMMENT: IF- Weak Surface Blow 3/4" blow Built to 2"
 IS- No Blow
 FF- Weak Intermediate Surface Blow in 15min
 FS- Pulled it



PRESSURE SUMMARY			
Time (Min.)	Pressure (psig)	Temp (deg F)	Annotation
0	2244.45	110.35	Initial Hydro-static
1	26.31	109.31	Open To Flow (1)
31	31.15	112.29	Shut-In(1)
77	1078.54	113.40	End Shut-In(1)
79	35.56	112.93	Open To Flow (2)
110	40.50	113.58	Shut-In(2)
113	1850.12	114.36	Final Hydro-static

Recovery		
Length (ft)	Description	Volume (bbl)
50.00	100% m	0.70

Gas Rates			
	Choke (inches)	Pressure (psig)	Gas Rate (Mcf/d)

Trilobite Testing, Inc

Ref. No: 49795

Printed: 2013.03.25 @ 06:15:59

DST # 1 EXPANDED CHART OF TEST

Trilobite

24

Pressure (psig)

1

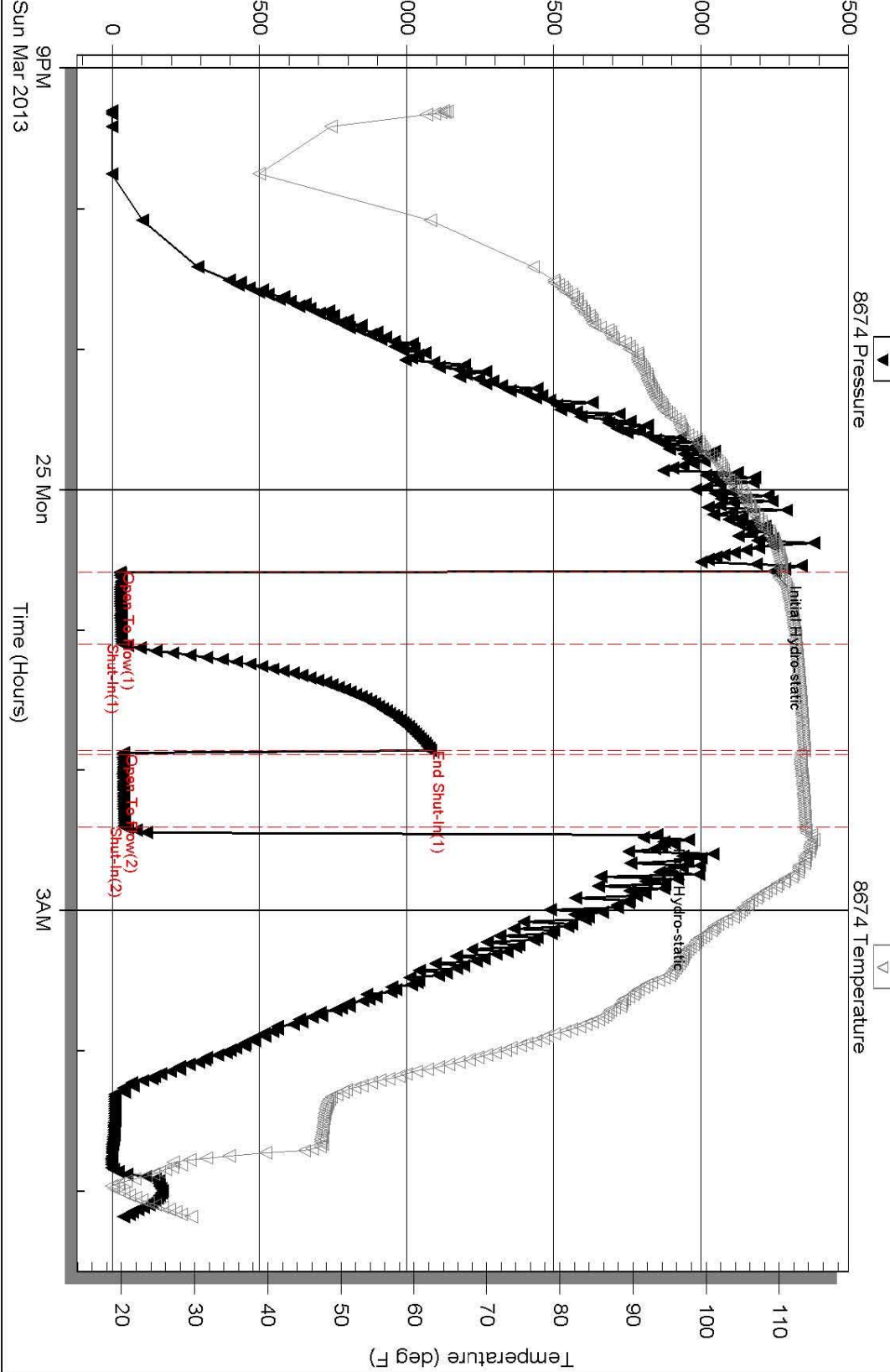
1

2


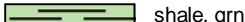





2

Series

Pressure vs. Time



ROCK TYPES

-  Lmst fw<7
-  shale, grn
-  Carbon Sh
-  Lscongl
-  Lmst fw>7
-  shale, gry
-  shale, red

ACCESSORIES

MINERAL

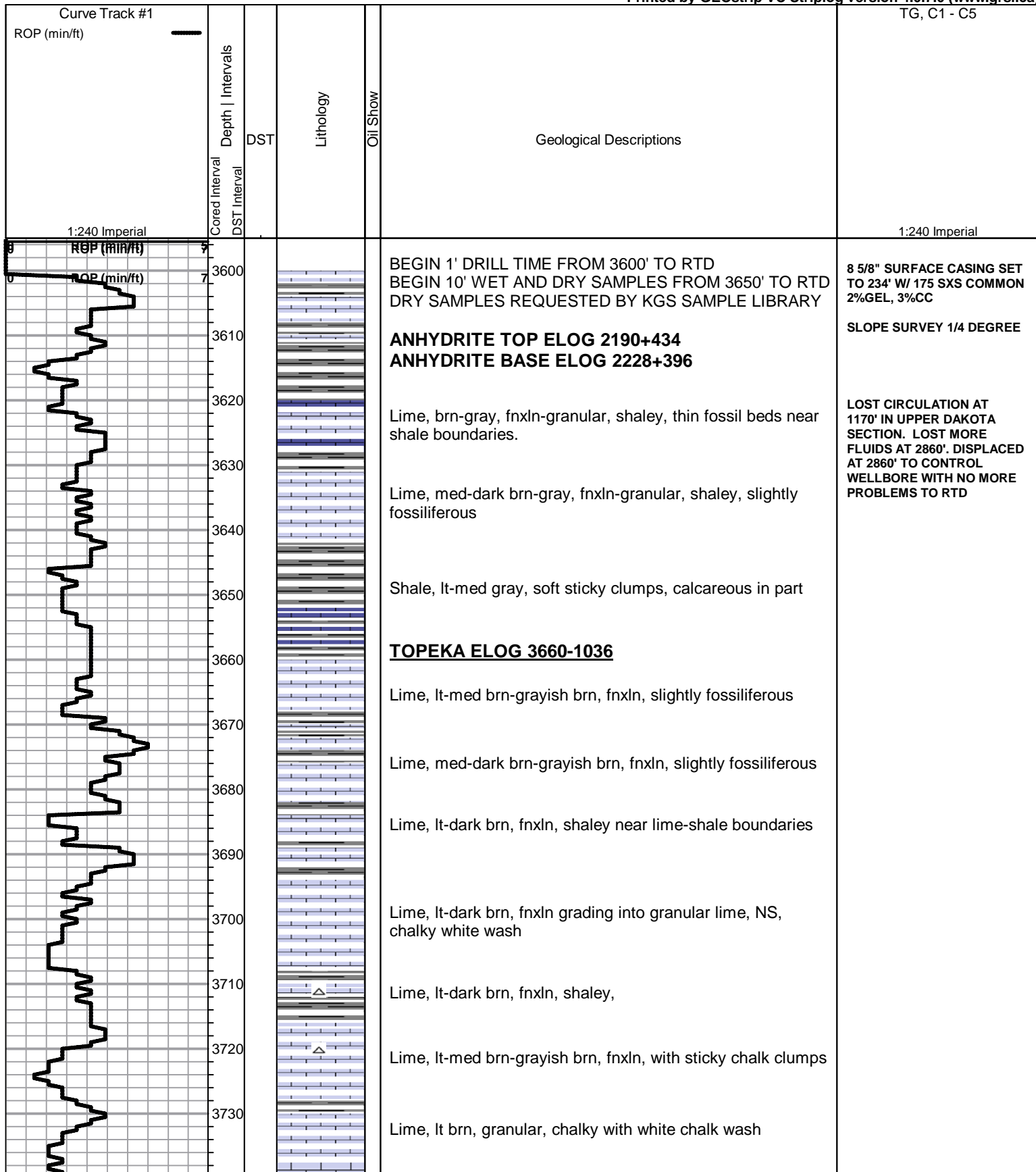
- P Pyrite
- Sandy
- Varicolored chert
- △ Chert White

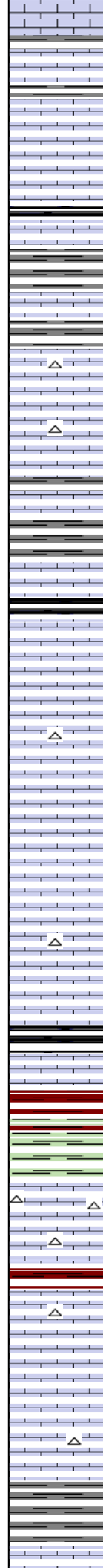
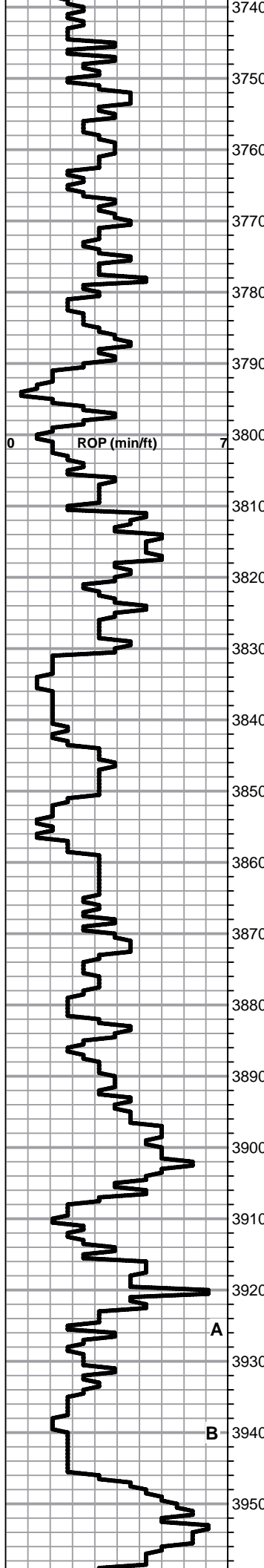
OTHER SYMBOLS

DST

- DST Int
- DST alt
- Core

Printed by GEOstrip VC Striplog version 4.0.7.0 (www.grsi.ca)





Lime, lt-med brn, fnxln-granular, chalk in part

Lime, lt brn-dark grayish brn near shale boundary, fnxln

Lime, lt grn, fnxln-granular, chalk in part

Lime, lt-med brn, fnxln-granular with chalk
Shale, black carbonaceous, soft blocky

Lime, lt-med brn, granular with gray mottling

Lime, lt-med brn, fnxln with chalk in part

Lime, lt brn, granular, bedded chalk, NS

Lime, lt brn, fnxln, bedded chalk, NS

Lime, lt brn, fnxln-micro xln, slight chalk in part

Lime, crm-lt brn, fnxln with bedded chalk in part
Shale, black carbonaceous, fissile, blocky

Lime, lt-med brn, fnxln-granular with slight chalk, thin beds of well cemented microfossils and fine oolites, NS

Lime, crm-lt brn, fnxln, slightly fossiliferous, slight chalk

Lime, lt brn-grayish brn, fnxln-granular, micritic in part, slightly fossiliferous

Lime, lt-med brn, fn-vfxln, bedded chalk in part

Lime, lt brn, fnxln-granular in part, slightly fossiliferous, chalk in part

HEEBNER SHALE ELOG 3883-1258
Shale, black carbonaceous, fissile, blocky
Lime, med-dark brn, fn-vfxln

Shale, lt red wash, soft mud grading into lime green soft shale

TORONTO ELOG 3905-1281

Lime, crm, fnxln, slightly fossiliferous, slight chalk, NS

LKC ELOG 3920-1296

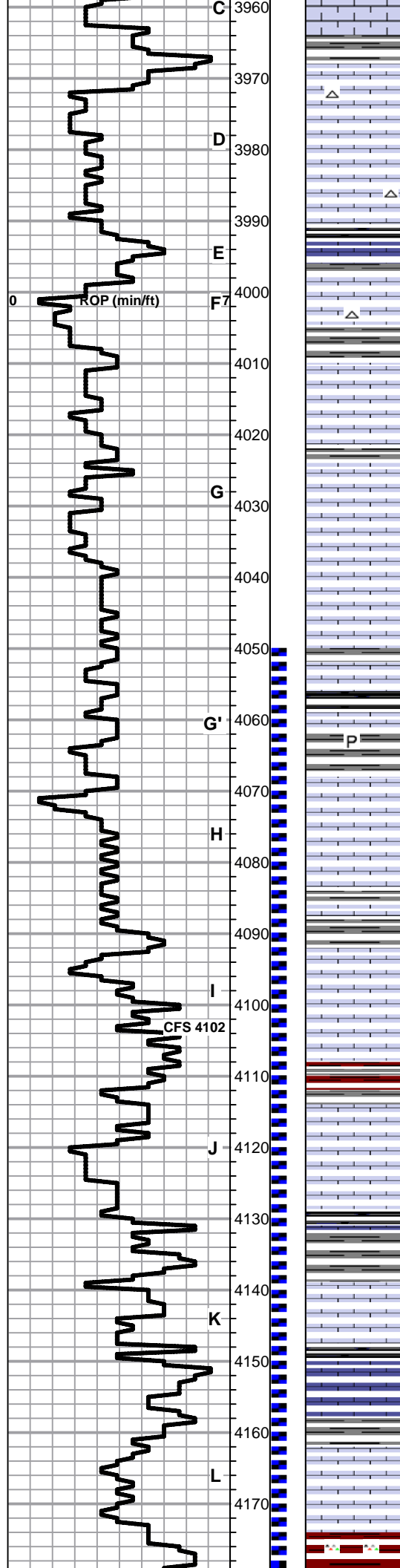
Lime, white-crm, fnxln-granular, bedded chalk, NS, No wet cut.

Lime, white-crm grading into med brn near shale boundary, NS, No wet cut

Shale, grayish green, soft blocky

Lime, crm, fnxln with mix of cemented oolites and fossil

SHORT TRIP @ 3915',
PULLED ABOVE LOST
CIRCULATION ZONE AND
CONDITIONED HOLE
BEFORE DRILLING AHEAD



Lime, crm, fnxln with mix of cemented oolitic and fossil fragment material, NS, no wet cut

3960

C

3970

Lime, crm-lt brn, fnxln-granular, slight chalk in part, NS

3980

D

3990

Lime, fn-microxln, slight chalk in part

4000

E

4010

Shale, gray-black carbonaceous
Lime, med brn, vfxln, slightly fossiliferous

4020

F

4030

Lime, crm-lt brn, fn-vfxln, slight chalk, NS

4040

Lime, crm-lt brn, fnxln, slight chalk

4050

Lime, crm, fnxln-granular, slight bedded chalk, NS

4060

G

4070

Lime, crm, fnxln-granular in part with chalky matrix

4080

Lime, crm, fnxln-granular, slight chalk in part

4090

Lime, white-crm, fnxln-granular, NS

4100

G'

4110

Shale, gray-black carbonaceous
Lime, crm, fnxln
Shale, med-dark gray, prytic clusters in part

4120

H

4130

Lime, white-crm, fnxln, bedded chalk, few granular chips, NS

4140

Lime, crm, fnxln, slight chalk

4150

Shale, gray-black, soft blocky

4160

I

4170

Lime, white-crm, mostly fnxln with few chips with scattered fine pinpt porosity with trace lt stain around pores. NFO or odor noted

Lime, crm-lt brn, fn-vfxln

Shale, reddish brn forming soft mud clumps

4180

J

4190

Lime, crm, soft chalky with white wash, NS, grading into fnxln lime

4200

Shale, grayish green, soft blocky with some dove gray shale forming soft mud

4210

K

4220

Lime, crm-lt brn, fnxln

4230

Shale, black carbonaceous

4240

Lime, lt gray, fnxln, chalk in part

4250

Lime, crm, fnxln, lot of bedded chalk, NS

4260

L

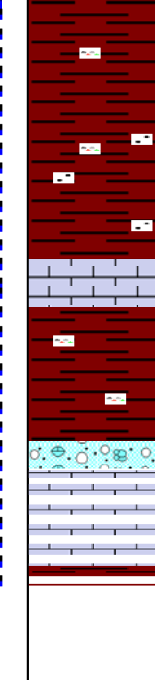
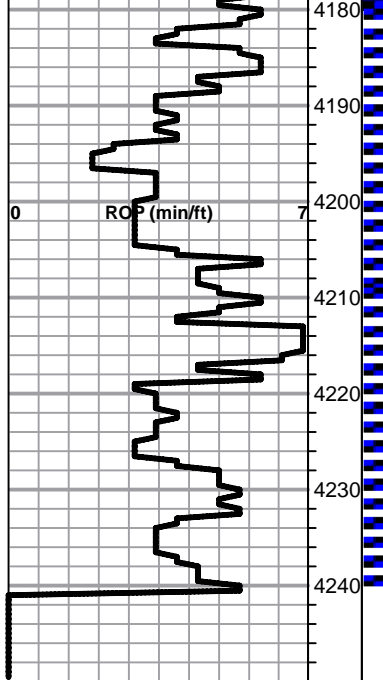
4270

Lime, crm, fnxln, chalk

BKC ELOG 4174-1550

Shale, reddish brn with lt red wash, soft mud to soft blocky

DST # 1 4050' TO 4241' SEE
HEADER OF REPORT FOR
TEST SUMMARY AND CHART



Shale, reddish brn, lt red wash, soft mud to soft blocky with harder clumps containing sandy material, NS

Lime, offwhite, fnxln

Shale, reds and brns, soft blocky, grading into vari color shales

Lime, reworked with red shale staining near boundary, NS

RTD 4240-1616 LTD 4241-1617

SLOPE SURVEY 3/4 DEGREE