

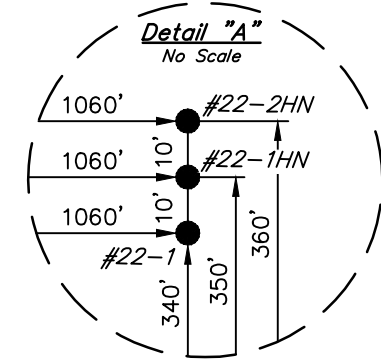
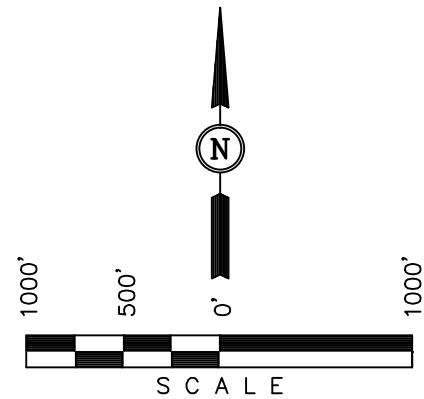
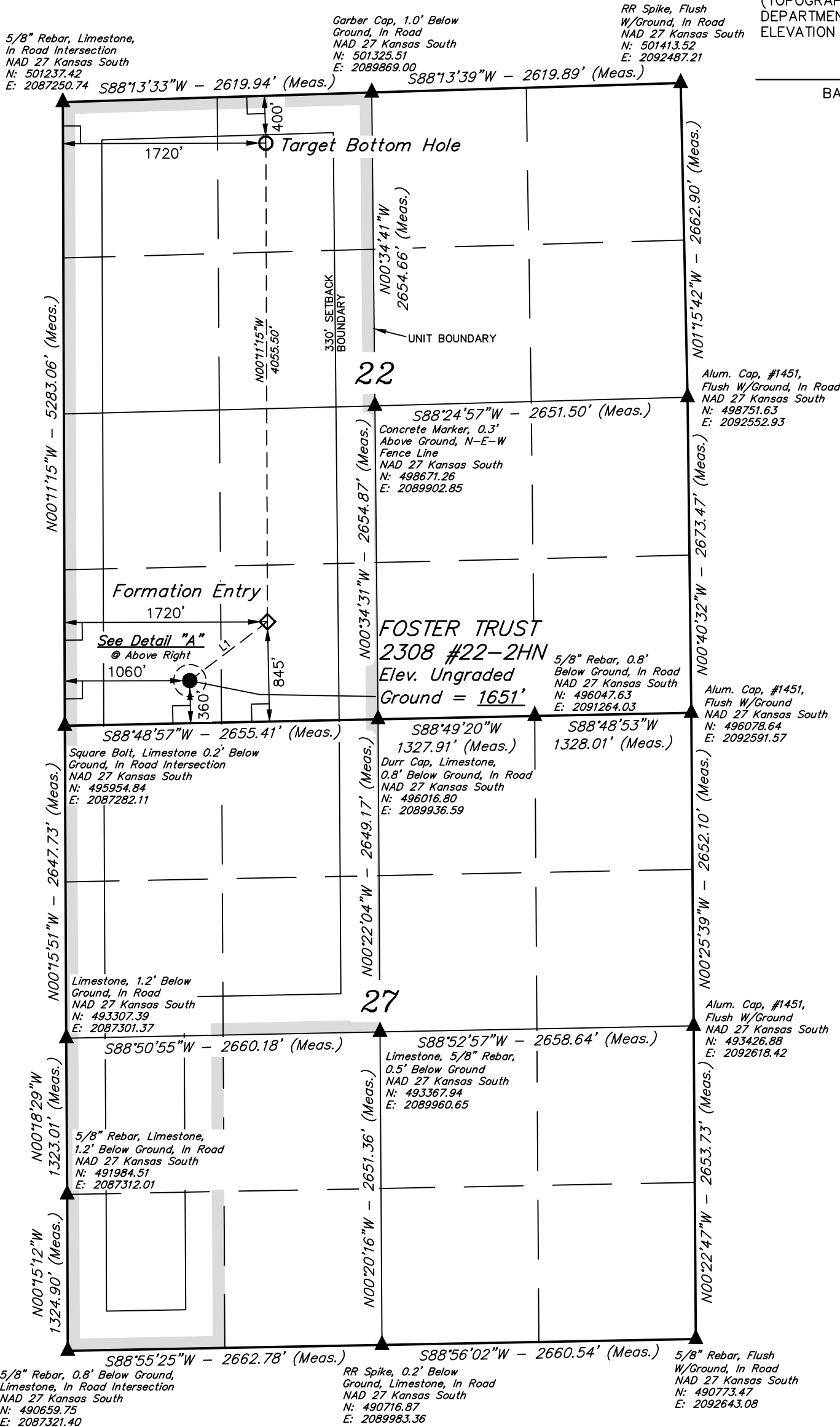
Well location, FOSTER TRUST 2308 #22-2HN, located as shown in the SW 1/4 SW 1/4 of Section 22, T23S, R8W, 6th P.M., Reno County, Kansas.

BASIS OF ELEVATION

SPOT ELEVATION LOCATED AT THE SOUTHWEST CORNER OF SECTION 18, T23S, R8W, 6th P.M. TAKEN FROM THE ALDEN SE, QUADRANGLE, KANSAS, RENO COUNTY, 7.5 MINUTE QUAD (TOPOGRAPHIC MAP) PUBLISHED BY THE UNITED STATES DEPARTMENT OF THE INTERIOR, GEOLOGICAL SURVEY. SAID ELEVATION IS MARKED AS BEING 1688 FEET.

BASIS OF BEARINGS

BASIS OF BEARINGS IS A G.P.S. OBSERVATION.



LINE TABLE

LINE	DIRECTION	LENGTH
L1	N52°51'27"E	825.86'

LEGEND:

└ = 90° SYMBOL

● = PROPOSED WELL HEAD.

▲ = SECTION CORNERS LOCATED.

CERTIFICATE

THIS IS TO CERTIFY THAT THE ABOVE PLAT WAS PREPARED FROM FIELD NOTES OF ACTUAL SURVEYS MADE BY ME OR UNDER MY SUPERVISION AND THAT THE SAME ARE TRUE AND CORRECT TO THE BEST OF MY KNOWLEDGE AND BELIEF.

JUSTIN S. JENSEN

REGISTERED LAND SURVEYOR

REGISTRATION NO. NSR 1451

STATE OF KANSAS

UNTAEH ENGINEERING & LAND SURVEYING

85 SOUTH 200 EAST - VERNAL, UTAH 84078

(435) 789-1017

SCALE	DATE SURVEYED:	DATE DRAWN:
1" = 1000'	02-12-13	02-13-13
PARTY	REFERENCES	
C.B. D.W. J.J.	G.L.O. PLAT	
WEATHER	FILE	
COOL	SGOMI	

NAD 83 (#22-2HN TARGET BOTTOM HOLE)	NAD 83 (#22-2HN FORMATION ENTRY)	NAD 83 (#22-2HN SURFACE LOCATION)
LATITUDE = 38°02'30.92" (38.041922)	LATITUDE = 38°01'50.83" (38.030786)	LATITUDE = 38°01'45.91" (38.029419)
LONGITUDE = 98°11'29.02" (98.191394)	LONGITUDE = 98°11'28.89" (98.191358)	LONGITUDE = 98°11'37.12" (98.193644)
NAD 27 (#22-2HN TARGET BOTTOM HOLE)	NAD 27 (#22-2HN FORMATION ENTRY)	NAD 27 (#22-2HN SURFACE LOCATION)
LATITUDE = 38°02'30.88" (38.041911)	LATITUDE = 38°01'50.79" (38.030775)	LATITUDE = 38°01'45.86" (38.029406)
LONGITUDE = 98°11'27.80" (98.191056)	LONGITUDE = 98°11'27.66" (98.191017)	LONGITUDE = 98°11'35.90" (98.193306)
STATE PLANE NAD 27	STATE PLANE NAD 27	STATE PLANE NAD 27
N: 500895.16 E: 2088972.67	N: 496840.03 E: 2088996.75	N: 496339.66 E: 2088339.81