



DRILL STEM TEST REPORT

Prepared For: **RJM Coampany**

Po Box 256 Claflin Kansas
67525

ATTN: Kurt

Prosser #1

31-15s-13w-Russell

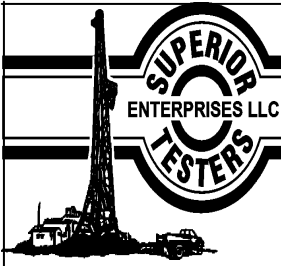
Start Date: 2013.02.16 @ 08:15:00

End Date: 2013.02.16 @ 14:44:00

Job Ticket #: 17421 DST #: 4

Superior Testers Enterprises LLC
PO Box 138 Great Bend KS 67530
1-800-792-6902

Printed: 2013.02.17 @ 02:58:47



DRILL STEM TEST REPORT

RJM Coampany
 Po Box 256 Claflin Kansas
 67525
 ATTN: Kurt

31-15s-13w-Russell
Prosser #1
 Job Ticket: 17421 **DST#: 4**
 Test Start: 2013.02.16 @ 08:15:00

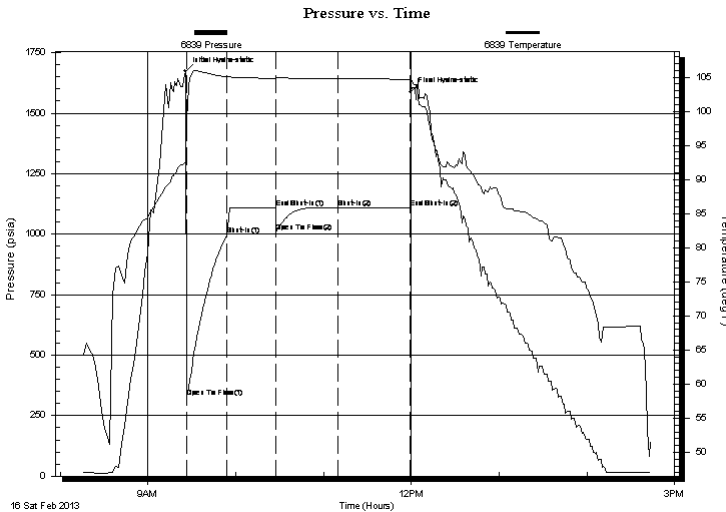
GENERAL INFORMATION:

Formation: **Arbuckle**
 Deviated: No Whipstock: ft (KB)
 Test Type: Conventional Bottom Hole (Initial)
 Time Tool Opened: 09:26:30 Tester: Dustin Ellis
 Time Test Ended: 14:44:00 Unit No: 3315-Great Bend-60
 Interval: **3279.00 ft (KB) To 3325.00 ft (KB) (TVD)** Reference Elevations: 1909.00 ft (KB)
 Total Depth: 3325.00 ft (KB) (TVD) 1902.00 ft (CF)
 Hole Diameter: 7.88 inches Hole Condition: Fair KB to GR/CF: 7.00 ft

Serial #: 6839 Outside
 Press@RunDepth: 1109.39 psia @ 3322.00 ft (KB) Capacity: 5000.00 psia
 Start Date: 2013.02.16 End Date: 2013.02.16 Last Calib.: 2013.02.17
 Start Time: 08:15:00 End Time: 14:44:00 Time On Btm: 2013.02.16 @ 09:25:30
 Time Off Btm: 2013.02.16 @ 11:59:30

TEST COMMENT: 1st Open 30 minutes Strong blow blew of bottom bucket 1 minute.
 1st Shut in 30 minutes No blow back
 2nd Open 45 minutes Strong blow blew of bottom bucket 1 minute.
 2nd Shut in 45 minutes No blow back

PRESSURE SUMMARY



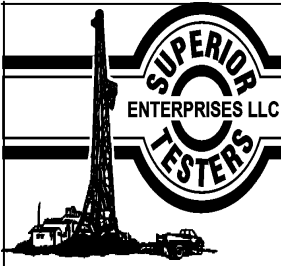
Time (Min.)	Pressure (psia)	Temp (deg F)	Annotation
0	1673.47	92.47	Initial Hydro-static
1	326.01	98.77	Open To Flow (1)
29	998.30	105.05	Shut-In(1)
62	1109.07	104.76	End Shut-In(1)
62	1010.37	104.73	Open To Flow (2)
105	1109.39	104.81	Shut-In(2)
154	1109.57	104.65	End Shut-In(2)
154	1588.52	104.84	Final Hydro-static

Recovery

Length (ft)	Description	Volume (bbl)
2250.00	Oil spotted muddy w water	31.56
0.00	Oil 1% Mud30% Water 69%	0.00
0.00	Chlorides 62,000	0.00

Gas Rates

Choke (inches)	Pressure (psia)	Gas Rate (Mcf/d)



DRILL STEM TEST REPORT

RJM Coampany
 Po Box 256 Claflin Kansas
 67525
 ATTN: Kurt

31-15s-13w-Russell
Prosser #1
 Job Ticket: 17421 **DST#: 4**
 Test Start: 2013.02.16 @ 08:15:00

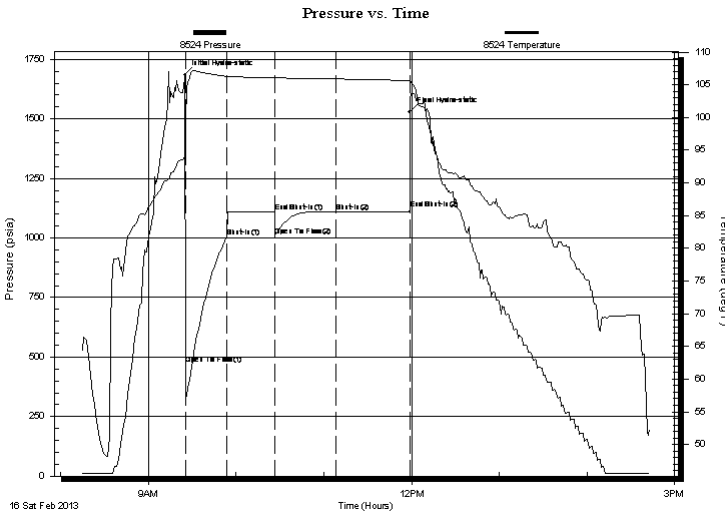
GENERAL INFORMATION:

Formation: **Arbuckle**
 Deviated: No Whipstock: ft (KB)
 Test Type: Conventional Bottom Hole (Initial)
 Time Tool Opened: 09:26:30 Tester: Dustin Ellis
 Time Test Ended: 14:44:00 Unit No: 3315-Great Bend-60
 Interval: **3279.00 ft (KB) To 3325.00 ft (KB) (TVD)** Reference Elevations: 1909.00 ft (KB)
 Total Depth: 3325.00 ft (KB) (TVD) 1902.00 ft (CF)
 Hole Diameter: 7.88 inches Hole Condition: Fair KB to GR/CF: 7.00 ft

Serial #: 8524 Inside
 Press@RunDepth: 1123.47 psia @ 3321.00 ft (KB) Capacity: 5000.00 psia
 Start Date: 2013.02.16 End Date: 2013.02.16 Last Calib.: 2013.02.17
 Start Time: 08:15:00 End Time: 14:43:29 Time On Btm: 2013.02.16 @ 09:25:07
 Time Off Btm: 2013.02.16 @ 11:58:45

TEST COMMENT: 1st Open 30 minutes Strong blow blew of bottom bucket 1 minute.
 1st Shut in 30 minutes No blow back
 2nd Open 45 minutes Strong blow blew of bottom bucket 1 minute.
 2nd Shut in 45 minutes No blow back

PRESSURE SUMMARY



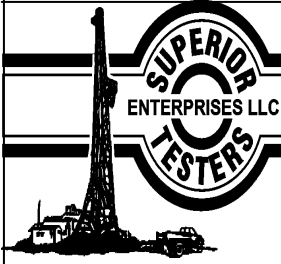
Time (Min.)	Pressure (psia)	Temp (deg F)	Annotation
0	1683.76	94.33	Initial Hydro-static
1	471.15	93.75	Open To Flow (1)
29	1004.62	106.27	Shut-In(1)
62	1109.49	106.02	End Shut-In(1)
62	1010.73	105.97	Open To Flow (2)
104	1109.82	105.89	Shut-In(2)
154	1123.47	105.65	End Shut-In(2)
154	1529.09	105.90	Final Hydro-static

Recovery

Length (ft)	Description	Volume (bbl)
2250.00	Oil spotted muddy w water	31.56
0.00	Oil 1% Mud30% Water 69%	0.00
0.00	Chlorides 62,000	0.00

Gas Rates

Choke (inches)	Pressure (psia)	Gas Rate (Mcf/d)



DRILL STEM TEST REPORT

TOOL DIAGRAM

RJM Coampany

31-15s-13w-Russell

Po Box 256 Claflin Kansas
67525

Prosser #1

Job Ticket: 17421

DST#: 4

ATTN: Kurt

Test Start: 2013.02.16 @ 08:15:00

Tool Information

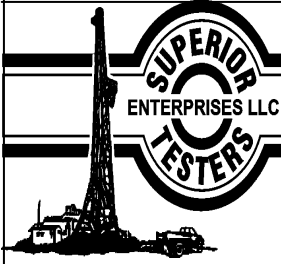
Drill Pipe:	Length: 3283.00 ft	Diameter: 3.80 inches	Volume: 46.05 bbl	Tool Weight: 2000.00 lb
Heavy Wt. Pipe:	Length: 0.00 ft	Diameter: 0.00 inches	Volume: 0.00 bbl	Weight set on Packer: 20000.00 lb
Drill Collar:	Length: 0.00 ft	Diameter: 0.00 inches	Volume: 0.00 bbl	Weight to Pull Loose: 40000.00 lb
			<u>Total Volume: 46.05 bbl</u>	Tool Chased 0.00 ft
Drill Pipe Above KB:	24.00 ft			String Weight: Initial 31000.00 lb
Depth to Top Packer:	3279.00 ft			Final 37000.00 lb
Depth to Bottom Packer:	ft			
Interval between Packers:	46.00 ft			
Tool Length:	66.00 ft			
Number of Packers:	2	Diameter: 6.75 inches		

Tool Comments:

Tool Description	Length (ft)	Serial No.	Position	Depth (ft)	Accum. Lengths
------------------	-------------	------------	----------	------------	----------------

Shut-In Tool	5.00			3264.00	
Hydraulic Tool	5.00			3269.00	
Packer	5.00			3274.00	20.00 Bottom Of Top Packer
Packer	5.00			3279.00	
Anchor	41.00			3320.00	
Recorder	1.00	8524	Inside	3321.00	
Recorder	1.00	6839	Outside	3322.00	
Bullnose	3.00			3325.00	46.00 Bottom Packers & Anchor

Total Tool Length: 66.00



DRILL STEM TEST REPORT

FLUID SUMMARY

RJM Coampany

31-15s-13w-Russell

Po Box 256 Claflin Kansas
67525

Prosser #1

Job Ticket: 17421

DST#: 4

ATTN: Kurt

Test Start: 2013.02.16 @ 08:15:00

Mud and Cushion Information

Mud Type: Gel Chem

Cushion Type:

Oil API:

deg API

Mud Weight: 9.00 lb/gal

Cushion Length:

ft

Water Salinity:

ppm

Viscosity: 52.00 sec/qt

Cushion Volume:

bbbl

Water Loss: 8.00 in³

Gas Cushion Type:

Resistivity: ohm.m

Gas Cushion Pressure:

psia

Salinity: 2500.00 ppm

Filter Cake: inches

Recovery Information

Recovery Table

Length ft	Description	Volume bbl
2250.00	Oil spotted muddy w ater	31.562
0.00	Oil 1% Mud30% Water 69%	0.000
0.00	Chlorides 62,000	0.000

Total Length: 2250.00 ft Total Volume: 31.562 bbl

Num Fluid Samples: 0

Num Gas Bombs: 0

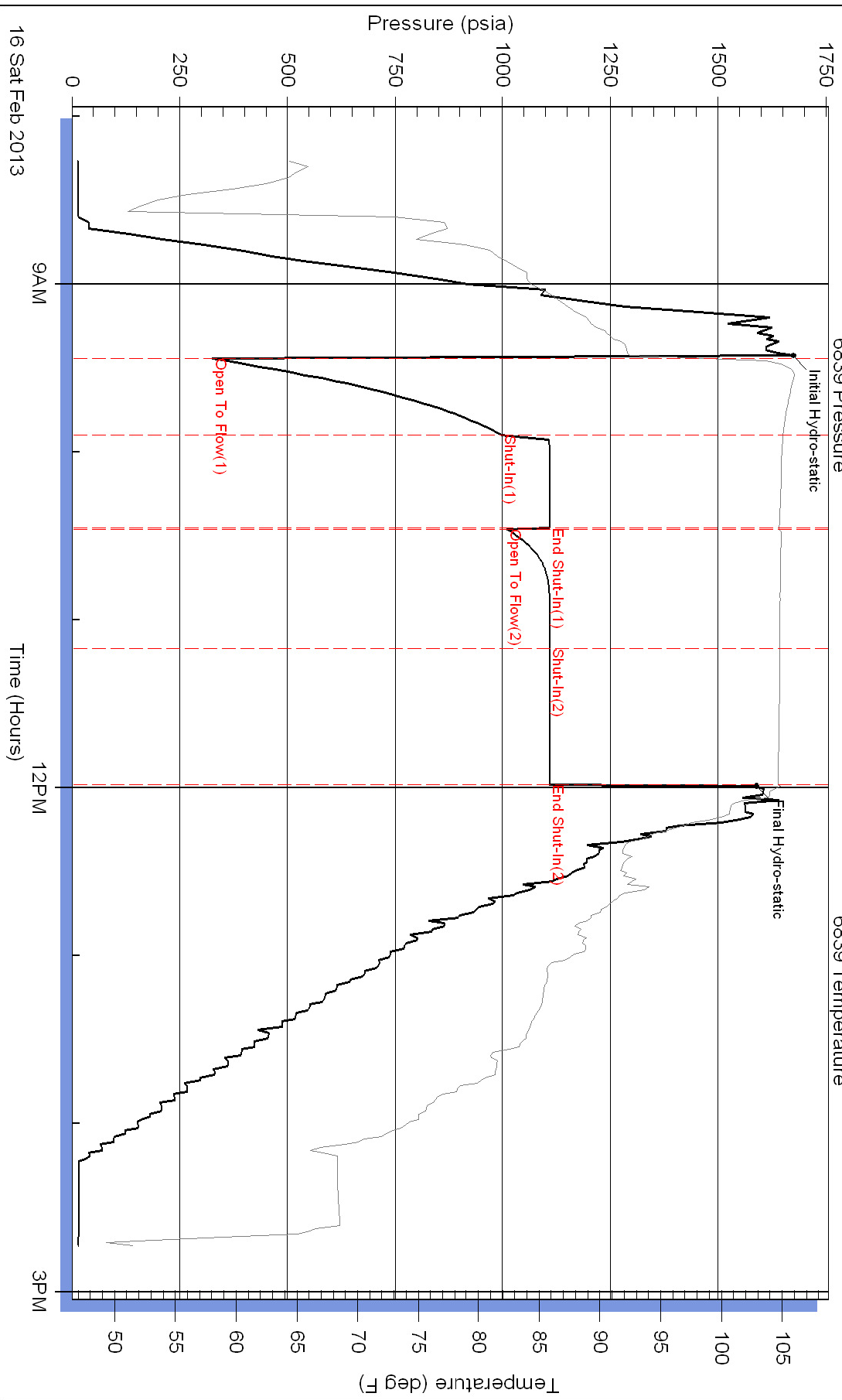
Serial #:

Laboratory Name:

Laboratory Location:

Recovery Comments:

Pressure vs. Time



Serial #: 8524

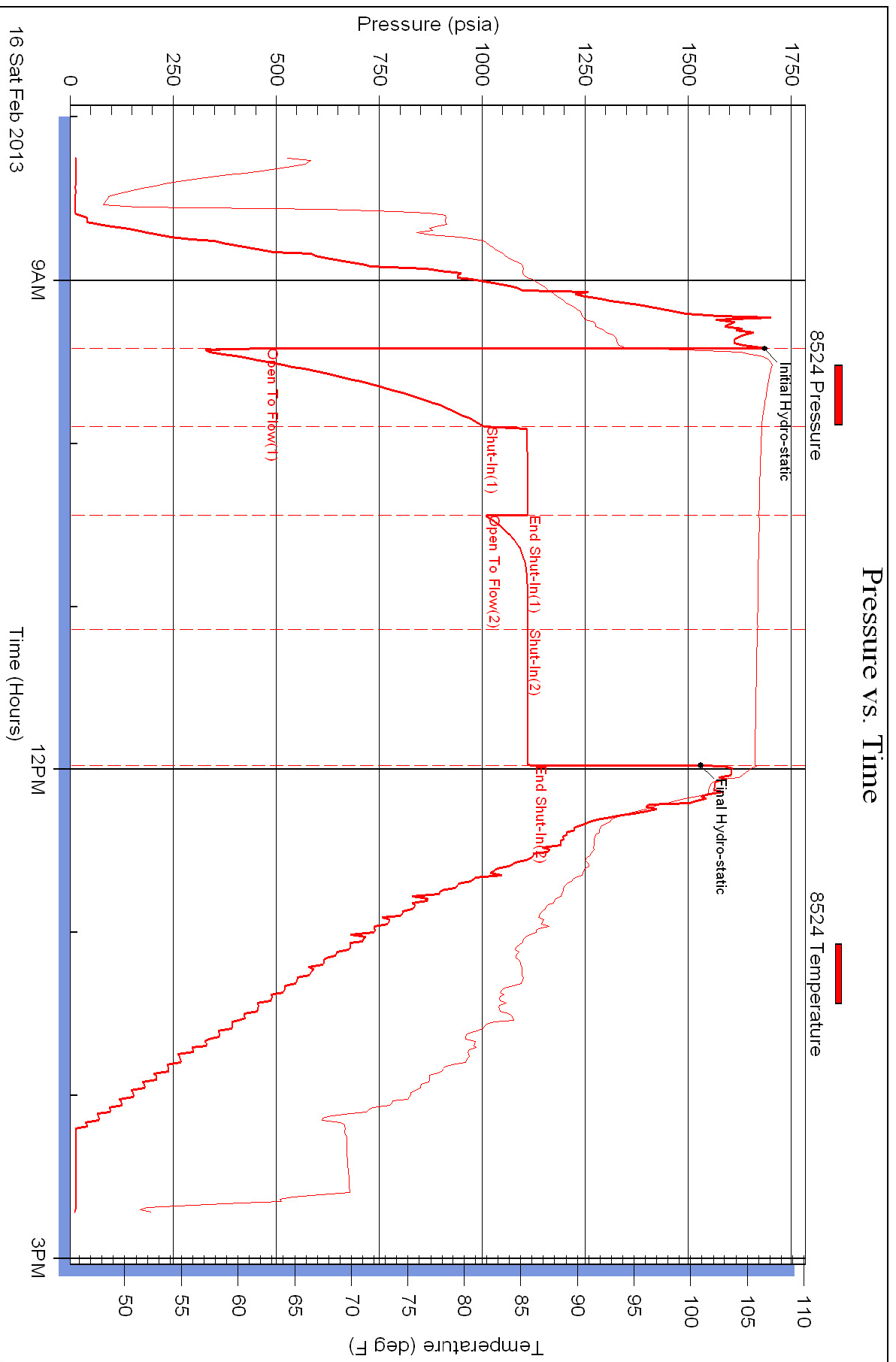
Inside

RJM Coarpany

Prosser #1

DST Test Number: 4

Pressure vs. Time



Superior Testers Enterprises LLC

Ref. No: 17421

Printed: 2013.02.17 @ 02:58:48