

# MIKE ENGELBRECHT

Licensed Geologist No. 534

2515 Spring Meadow  
Wichita, KS 67205

Phone: 316-721-9220  
Cell: 316-641-8008

## GEOLOGIST'S REPORT DRILLING TIME AND SAMPLE LOG

OPERATOR **RICHELIE EXPLORATION INC.**

LEASE # **1 KUHN 19A**

FIELD **WILDCAAT**

LOCATION **1900' FNL & 1490' FEL = E/2 SW NE**

SEC. **19** TWP. **12** RGE. **28 W**

COUNTY **GOVE** STATE **KS.**

CONTRACTOR **DUKE DRILLING RIG# 2**

COMP. **12-3-12** COMP. **12-14-12**

RTD **4616** LOG TO **4616** RTD

SAMPLES SAVED FROM **3550'** TO **4616** RTD

DRILLING TIME KEPT FROM **3400'** TO **RTD**

SAMPLES EXAMINED FROM **3550'** TO **RTD**

GEOLOGICAL SUPERVISION FROM **3684'** TO **RTD**

FLUID UP **DISPL @ 3380'** TYPE FLUID **CHEMICAL**

API # **15-063-22,065-00-00**

| FORMATION     | LOG | DEPTH | DEPTH | DEPTH | DEPTH | DEPTH | DEPTH | DEPTH | DEPTH |
|---------------|-----|-------|-------|-------|-------|-------|-------|-------|-------|
|               |     | TOP   | PAVIM | TOP   | PAVIM | TOP   | PAVIM | TOP   | PAVIM |
| ANHYDRITE     |     | 2254  | +501  | 2255  | +500  |       |       |       |       |
| BASE          |     | 2290  | +465  | 2292  | +463  |       |       |       |       |
| STOTLER       |     | 3510  | -755  | 3511  | -756  |       |       |       |       |
| HEEBNER SH    |     | 3865  | -1110 | 3867  | -1112 |       |       |       |       |
| LANISING      |     | 3905  | -1150 | 3906  | -1151 |       |       |       |       |
| MUWIE SH      |     | 4044  | -1289 | 4046  | -1291 |       |       |       |       |
| STARK SH      |     | 4132  | -1377 | 4132  | -1377 |       |       |       |       |
| BKC           |     | 4182  | -1427 | 4183  | -1428 |       |       |       |       |
| ALAMOUNT      |     | 4228  | -1473 | 4229  | -1474 |       |       |       |       |
| PRUNEE        |     | 4306  | -1551 | 4306  | -1551 |       |       |       |       |
| FT. SCOTT     |     | 4386  | -1631 | 4385  | -1630 |       |       |       |       |
| CHEROKEE SH   |     | 4412  | -1657 | 4413  | -1658 |       |       |       |       |
| MISSISSIPPIAN |     | 4490  | -1735 | 4490  | -1735 |       |       |       |       |

### ELEVATION

KB 2755

DF 2747

GL 2747

Measurements Are All

From KB 2755'

### CASING RECORD

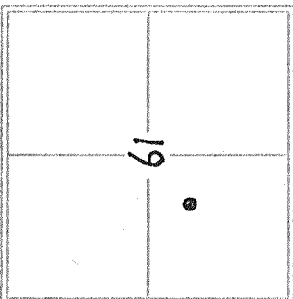
SURFACE **8 5/8" @ 235'**

w/ 165 SXS. COM.

PRODUCTION **4 1/2" @ 4600'**

w/ 225 SXS. FC @ 2234'

WELL LOG SURVEYS  
COMP/DENS/NEUTRON  
DUAL INDUCTION



REFERENCE WELL FOR STRUCTURAL COMPARISON

TIDEWATER OIL Co. #1 E.M. BLAND  
CNE SE 23-12-29W

| DATE    | DEPTH           | LOG | LOG | LOG | LOG | LOG | LOG |
|---------|-----------------|-----|-----|-----|-----|-----|-----|
| 12-1-12 | MRT             |     |     |     |     |     |     |
| 12-2    |                 |     |     |     |     |     |     |
| 12-3    | SPUD RUN 8 5/8" |     |     |     |     |     |     |
| 12-4    | DRG @ 1110'     |     |     |     |     |     |     |
| 12-5    | DRG @ 2680'     |     |     |     |     |     |     |
| 12-6    | DRG @ 3394'     |     |     |     |     |     |     |
| 12-7    | DRG @ 3950'     |     |     |     |     |     |     |
| 12-8    | DRG @ 4045'     |     |     |     |     |     |     |
| 12-9    | DST #3 @ 4103'  |     |     |     |     |     |     |
| 12-10   | COND @ 4135'    |     |     |     |     |     |     |
| 12-11   | DRG @ 4270'     |     |     |     |     |     |     |
| 12-12   | DRG @ 4400'     |     |     |     |     |     |     |
| 12-13   | DRG @ 4520'     |     |     |     |     |     |     |
| 12-14   | RAN 4 1/2" Csg. |     |     |     |     |     |     |



20  
30  
40  
50  
60  
70  
80  
90

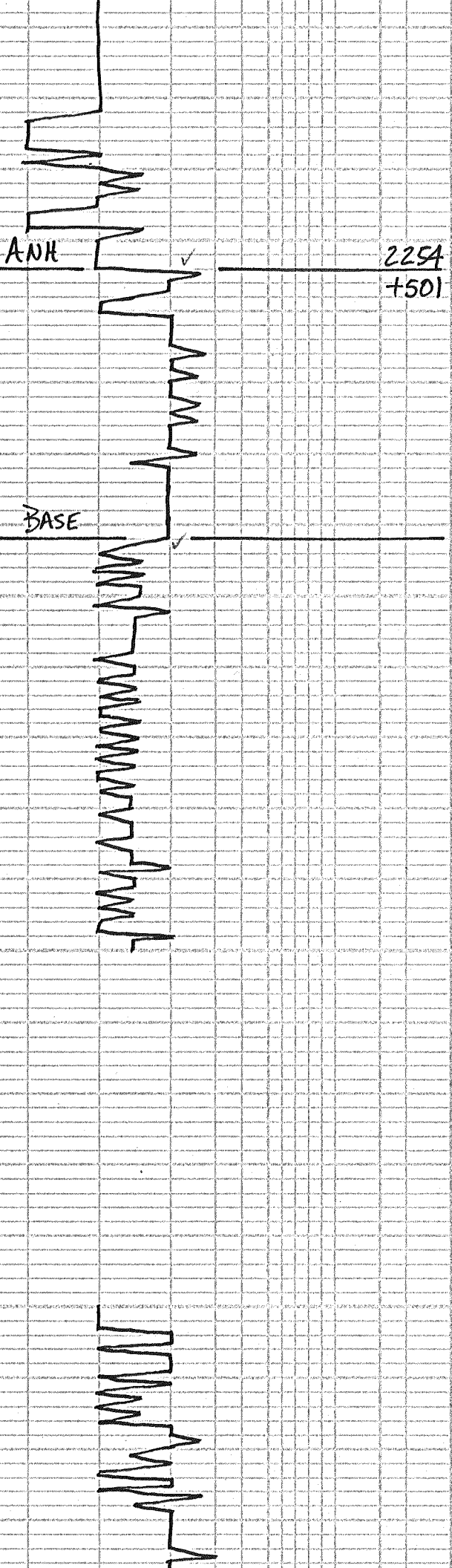
ANK

2294  
+501

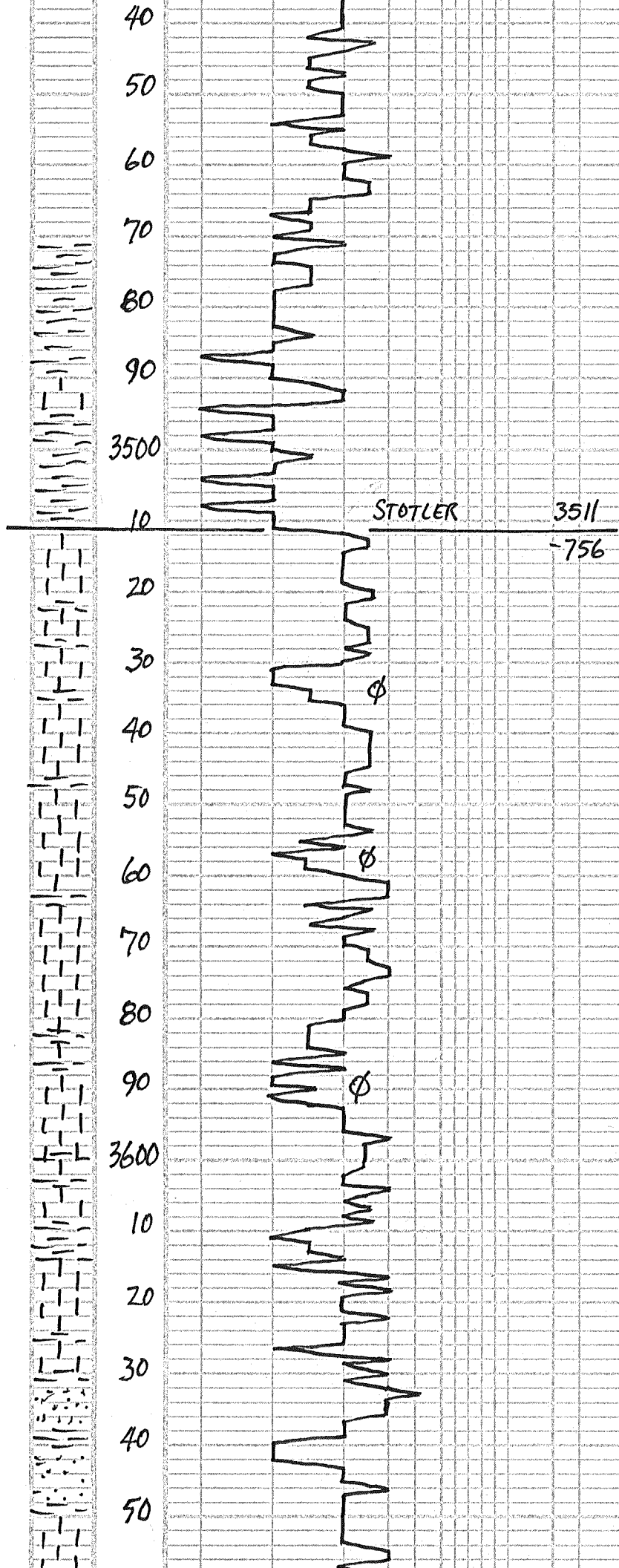
BASE

2300  
10  
20  
30  
40  
50

3400  
10  
20  
30



S.H.T = 1/2" @ 3452'



← MUD CO. ✓  
 VISC: 45 FILT: 6.8  
 WT: 8.8 CHL: 1,200

60 PRED LT CRM-BUFF FOSS LS FAIR φ  
 NS NO ODOR

ADD PRE-MIX

CRM-BUFF LS AA-NS INC GRY SH

80 LOTS PURE WH CRM LS-NS

GRM-BUFF SEMI-FOSS-DOL LS  
 POOR φ - NS NO ODOR

100 SALT N PEPPER-DOL LS POOR φ  
 NS NO ODOR

LT CRM TINY DOL LS POOR φ NS  
 SLI-CRY NO ODOR

20 LT BUFF FN-XLN DOL LS-NS

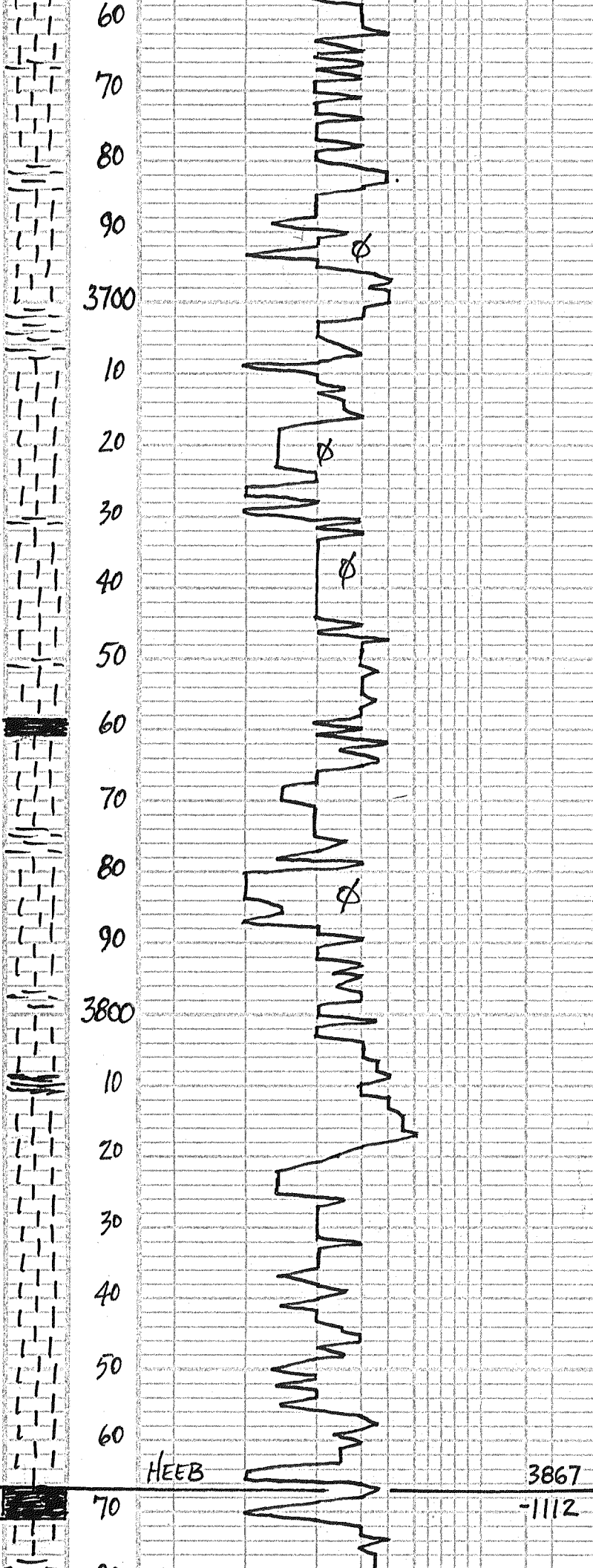
LT TAN-BUFF SLI-FOSS LS POOR φ  
 NS NO ODOR

40 GRM-BUFF FN-XLN LS POOR φ  
 NS NO ODOR

LT GRM FN-CR MICA SST-DIRTY  
 POOR φ - NS NO ODOR

60 GRY SILTY SHS TRACE BUK SH

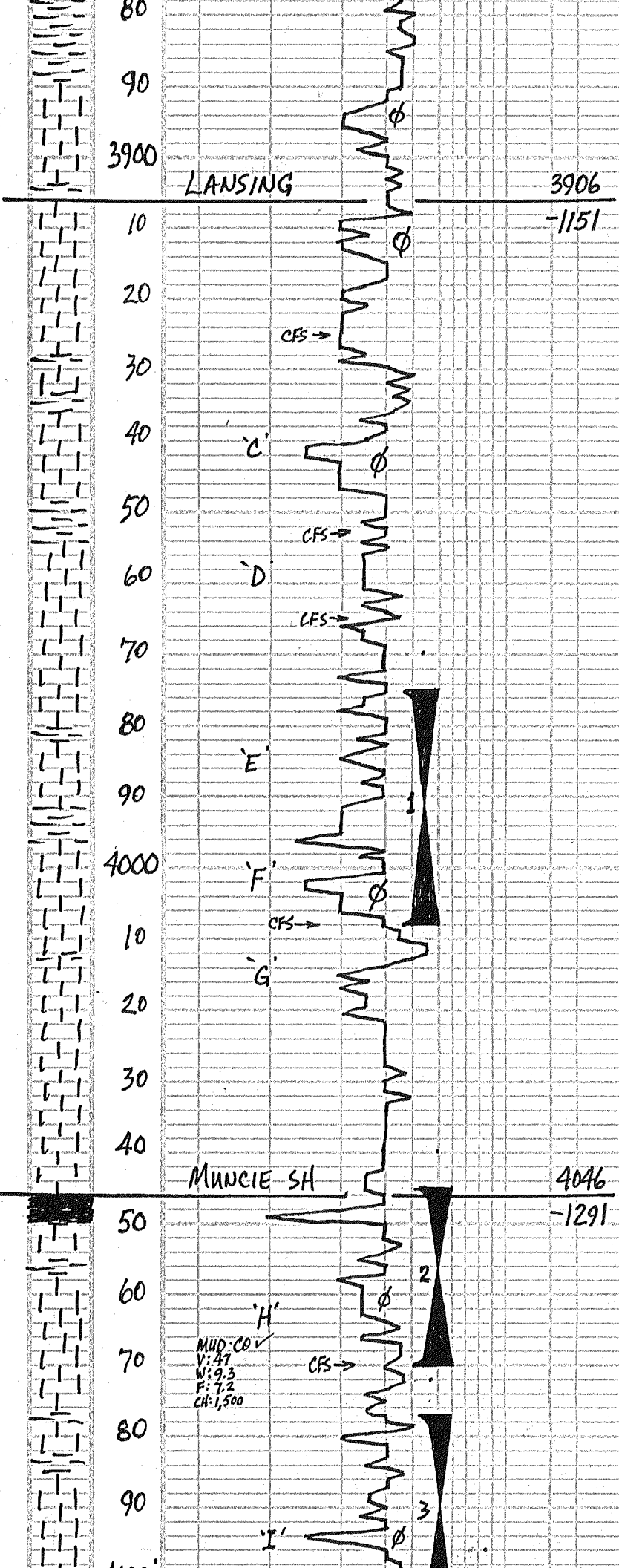
TAN-BUFF SEMI-DOL LS POOR φ



CRM - BUFF SEMI WH LS - P-F  $\phi$  - NS NO ODOR  $\leftarrow$  VISC: 50  
 WT: 9.1  
 50 LT CRM - BUFF FOSS LS P-F  $\phi$  - NS NO ODOR  
 LOTS GRAY SHS  $\frac{1}{2}$  BUFF GRAINY  
 LS POOR  $\phi$  - NS NO ODOR  $\leftarrow$  GEOL ON LOC.  
 5:30 PM TH 12-6-12  
 60 CRM - LT TAN SEMI-FOSS LS  
 FAIR  $\phi$  - NS NO ODOR 1000 # P.P.  
 20 LT CRM - BUFF SEMI-ODL-FOSS  
 LS SLI SLY P-F  $\phi$  - NS  
 LT CRM - BUFF SLI-FOSS LS  
 P-F  $\phi$  - NS  
 40 LS AA  $\frac{1}{2}$  DK GRAY - FEW BLK SHS  
 LOTS DK GRAY - BLK SHS  
 60 FLOOD LT CRM - WH CKY LS POOR  $\phi$   
 NS, NO ODOR  $\leftarrow$  VISC: 60  
 WT: 9.1  
 LT CRM - BUFF SLI-FOSS LS - NS  
 50 WH - LT CRM SLI-FOSS LS POOR  $\phi$   
 NS NO ODOR, FEW BLK SHS  $\leftarrow$  TIGHT CONN!  
 WH - LT CRM SLI-FOSS LS - NS  
 80 WH - LT CRM FOSS - CKY LS  
 P-FAIR  $\phi$  - NS NO ODOR  
 FLOOD WH V. CKY LS P-FAIR  $\phi$   
 NS NO ODOR LOOSE CKY  $\leftarrow$  VISC: 60  
 WT: 9.1  
 20 WH - LT CRM SLI-FOSS LS POOR  $\phi$   
 NS NO ODOR PTLY CKY  
 TRACE DK GRAY - BLK SHS  
 LT TAN DNSE FN-XLN LS - NS  $\leftarrow$  VISC: 49  
 WT: 9.2  
 LCM: 2 #  
 40 FLOOD LT CRM - TAN SEMI-FOSS  
 LS P-F  $\phi$  - NS NO ODOR  
 LT CRM - LT TAN SLI-FOSS LS  
 POOR  $\phi$  - NS NO ODOR  
 60 LT CRM - TAN SUB OOL FOSS LS  
 FAIR  $\phi$  - NS SLI CKY  
 WH - CRM, LT TAN SEMI-FOSS LS  
 P-F  $\phi$  PTLY CKY NS NO ODOR  
 80 FLOOD DK-GRAY BLK SHS  $\leftarrow$  VISC: 49  
 WT: 9.2  
 LCM: 2 #  
 LT CRM - TAN FN-XLN LS - NS

HEEB

3867  
-1112



LT GRAY - GRN SHS

00 LT CRM FN-XLN CLKY LS-NS  
LOTS SHS - GRAY

10 FLOOD WH-LT CRM FN-XLN LS  
LOTS CLKY POOR  $\phi$  - NS NO ODOR

20 FLOOD WH-FN-XLN CLKY LS  
POOR  $\phi$  - NS NO ODOR

25) WH-LT CRM-LT TAN FN-XLN LS  
LS POOR  $\phi$  - NS NO ODOR

30 MIN: LT CRM SLI-FOSS LS  
POOR  $\phi$  - NS NO ODOR PTRY CLKY

60 MIN: WH-LT CRM FN-XLN LS  
POOR  $\phi$  - NS PTRY CLKY

40 WH-LT CRM CLKY LS POOR  $\phi$  - NS

50 RED-BRN SHS  $\frac{1}{2}$  WH SLI FOSS LS  
POOR  $\phi$  - NS NO ODOR CLKY

53) WH-LT CRM SLI-COL LS PTRY  
CLKY P-F FOSS  $\phi$  - NS NO ODOR

30 MIN: FLOOD WH CLKY LS FN-XLN  
POOR  $\phi$  - NS NO ODOR

60 MIN: LT CRM-LT TAN FN-XLN LS  
POOR  $\phi$  - NS NO ODOR PTRY CLKY

65) LT CRM-LT TAN SLI-FOSS LS  
POOR  $\phi$  - NS NO ODOR

30 MIN: LT CRM SLI-FOSS LS POOR  $\phi$   
NS NO ODOR INC CLKY

60 MIN: WH-LT CRM SUB ODCL LS  
POOR-FAIR  $\phi$  - NS PTRY CLKY

80 WH-LT CRM SLI-FOSS LS PTRY  
CLKY POOR  $\phi$  - NS NO ODOR

90 FLOOD WH-LT CRM FN-XLN LS  
LOTS CLKY POOR  $\phi$  - NS NO ODOR

00 3 PCS LT CRM SLI-FOSS LS W/  
SCAT PPT-FOSS  $\phi$  W/SSFO, NO ODOR

08) CRM SEMI-FOSS LS W/SCAT VING  
FOSS  $\phi$  LOTS W/LT BRN STN  
6 PCS W/V-SSFO, TRACE GAS, LT ODOR  
CLEAN  $\phi$

30 MIN: DECR IN PCS AA-FEW  
W/SCAT STN LT ODOR ON BRK

60 MIN: INC PCS W/MID BRN STN  
10 PCS W/V-SSFO IN CLKY & CLN PCS  
MED BRN FO LT ODOR ON BRK

20 LT CRM FN-XLN LS POOR  $\phi$  - NS  
NO ODOR, DNSE-CLKY

30 FLOOD WH-LT CRM SEMI-FOSS LS  
P-F FOSS  $\phi$  - NS NO ODOR

40 FLOOD WH-FN-XLN LS POOR  $\phi$   
NS, NO ODOR LOTS CLKY

50 PRED WH-FN-XLN CLKY LS POOR  $\phi$   
NS, NO ODOR LOTS CLKY

60 LOTS BLK SHS  $\frac{1}{2}$  LT CRM SLI-FOSS  
LS POOR  $\phi$  - NS LT GRAY CLKY LS

70) FEW LT CRM  $\frac{1}{2}$  LT TAN V-FOSS LS  
W/FAIR FOSS  $\phi$  W/SCAT STN & SSFO  
FAIR SWEET ODOR H' & H' IN LS

30 MIN: FAIR AMT LT CRM FOSS LS  
W/LT STN 10 PCS W/VSSLTGFD F-6D  
ODOR CLEAN PCS

60 MIN: DECR IN PCS AA INC CLKY  
LS POOR  $\phi$  FEW W/STN STILL  
FAIR ODOR

90 WH-FN-XLN SLI-FOSS LS POOR  $\phi$   
V FEW PCS W/SCAT STN-NO FO  
LOTS CLKY, NO ODOR

← TIGHT COAN!

ADDING PRE-MIX

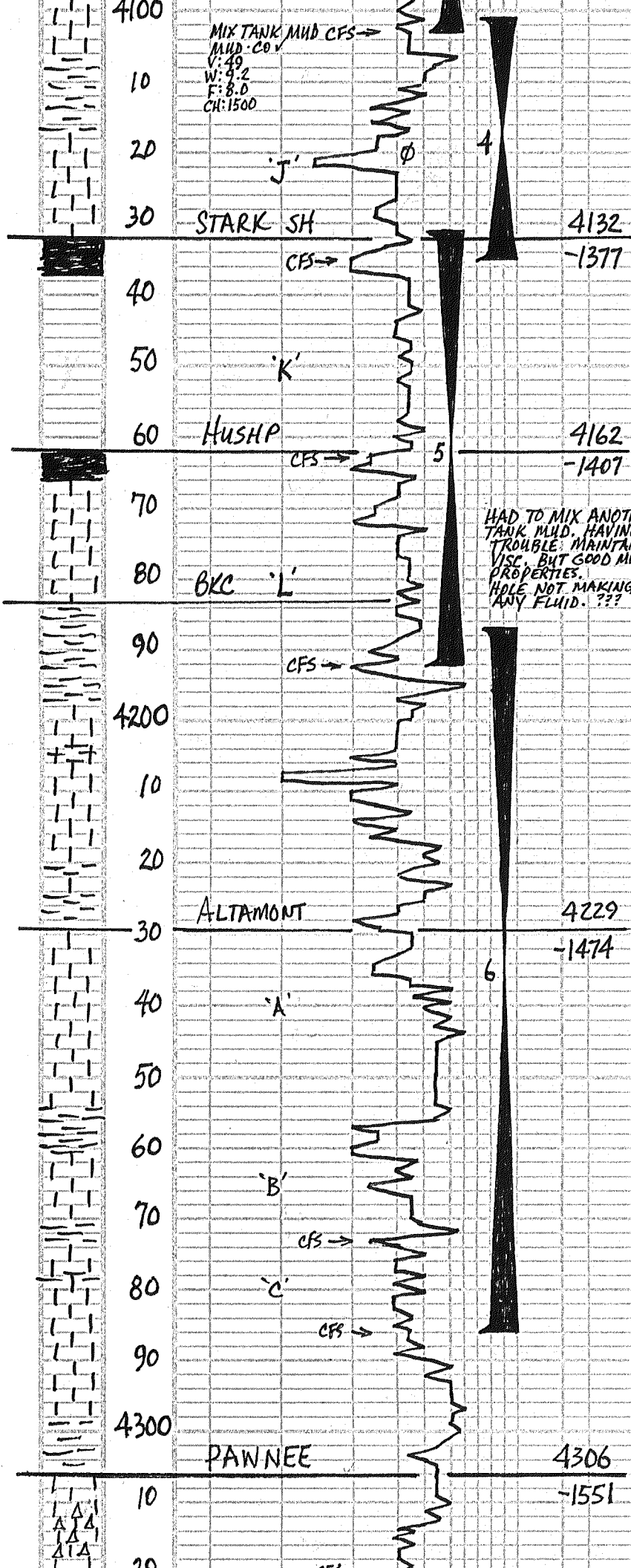
PULLED 25 STDS S.T.  
V. FEW TIGHT  
PIPE STRAP .84 LONG  
S.H.T. =  $\frac{1}{2}$ "

DST #1 3975-4008'  
30-45-45-60  
IF: WK BUILT TO 10 1/2"  
FF: FAIR BUILT TO BOB 43 MINS  
REC: 1' CO  
150' WM = 30% W, 70% M  
120' MW = 10% M, 90% W  
271' TOTAL FLUID  
CHL = 49,000  
SIP: 1256-1227  
IFP: 49-99 FFP: 104-172  
(GTS - LT GAS ODOR)

DST #2 4045-4070  
30-45-45-60  
IF: FAIR BUILT TO BOB 10 MINS  
IS: BB. BUILT TO 4"  
FF: BUILT TO BOB IN 4 MINS.  
FS: BB. BUILT TO 9 1/2"  
REC: 1260' GIP  
78' CGO = 35% G, 65% O  
63' MGO = 25% G, 25% M, 50% O  
63' GOM = 20% G, 20% O, 60% M  
204' T.F. 37° GRAY.  
SIP: 1232-1214  
IFP: 45-71 FFP: 78-113

DST #3 4077-4103  
30-45-30-45  
IF: WK BUILT TO 1 1/2"  
FF: DEAR - FLIGHT - NO HED

MUD CO ✓  
V: 47  
W: 9.3  
F: 7.2  
CH: 1,500



MIX TANK MUD CFS  
MUD-CO V  
V: 49  
W: 9.2  
F: 8.0  
CH: 1500

HAD TO MIX ANOTHER  
TANK MUD. HAVING  
TROUBLE MAINTAIN  
VISC BUT GOOD MUD  
PROPERTIES.  
HOLE NOT MAKING  
ANY FLUID. ???

60 MIN: STILL FAIR AMT PCS W/ STN OR S/LT BRGFO. CLEAN. PTY CRY & BLK SHS THIS ZN DRY VS 'H' ZONE.

20 PRED BLK GRAY-GRN SHS FEW CRM LS W/ SCAT VLG Ø W/ S/F O

30 PRED SHS GRAY-GRN SILTY FEW LS NA W/ SCAT STN TRACE FO NO ODOR

35) FLOOD CRM V. FOSS LS W/ F-GD FOSS Ø 50 PCS W/ STN & S/LT GFO, GD ODOR SOME PCS MELT. SEMI-FRIA CLEAN RKS SOME S/LT & SMALL-MD VLG, TINY ROL 30 MIN: DECR IN PCS BUT MD VLGES W/ S-FSLT GFO, STILL GD ODOR, CLEAN 60 MIN: FLOOD BLK SHS STILL LOTS CRM LS W/ MED VLG Ø W/ S-FSLT GFO CLEAN POR V. FEW CRY

50 FLOOD BLK SHS

60 WH- LT CRM SLI-FOSS CRY LS POOR Ø FEW PCS SCAT LT STN SLUFF? FT ODOR OL BRK

62) FLOOD WH-V. LT GRAY CRY LS POOR Ø NS NO ODOR 30 MIN: FLOOD WH-V. LT GRAY FN-XLN CRY LS NS POOR Ø NO ODOR PRED WH-V. LT GRAY FN-XLN CRY LS POOR LS-NS LOTS BLK SHS 80 TAN-FLESH FN-MD-XLN LS POOR Ø NS NO ODOR PTY CRY

90 LT TAN- BUFF-FLESH SLI-FOSS LS W/ POOR INTER-XLN Ø 3 PCS W/ S/F O, FT ODOR

92) TAN-ROOT BEER LS W/ PPT Ø W/ SCAT STN 4 PCS W/ S/LT GFO, FT ODOR 30 MIN: LT CRM SLI-FOSS LS W/ POOR FOSS PPT Ø 2 PCS W/ S/LT GFO NO ODOR 60 MIN: FEW PCS AA PRED SHS, CRY GRN RUST-BRN-BLK

10 PRED GRAY-GRN SHS & WH-CRM FN-XLN LS POOR Ø NS PTY CRY

20 LT GRAY-GRN FN-GR SILTSTONE POOR Ø NS NO ODOR WH-CRM-TAN LS FN-XLN-NS NO ODOR

30 WH-CRM-TAN FN-XLN LS POOR Ø NS NO ODOR, LOTS PYRITE & SHS

40 PRED WH-LT CRM FN-XLN LS DNSE-CRY POOR Ø NS 2 PCS W/ STN

50 LT CRM-SLI-FOSS LS W/ POOR FOSS Ø 3 PCS W/ LT STN, TRACE FO SLUFF?

60 PRED GRAY-GRN SHS & LS AA-NS NO ODOR, FEW PCS SCAT LT STN

70 WH-LT CRM FN-XLN LS DNSE-CRY POOR Ø NS NO ODOR 30 MIN: WH-LT CRM-LT TAN FN-XLN LS POOR Ø NS NO ODOR 60 MIN: WH FN-XLN CRY LS POOR Ø NS NO ODOR

80 WH-LT CRM-VLT PEACH FN-XLN LS CRY-POOR Ø NS NO ODOR 30 MIN: FLOOD WH-SUB DOC LS MOSTLY CRY POOR Ø NS NO ODOR 60 MIN: WH-DOC CRY LS POOR Ø NS NO ODOR

90 PRED WH FN-XLN LS DNSE-CRY POOR Ø NS NO ODOR

10 LOTS GRAY-BLUE-BLK SHS FEW FN GR SST POOR SORT LS MATRIX POOR Ø NS NO ODOR

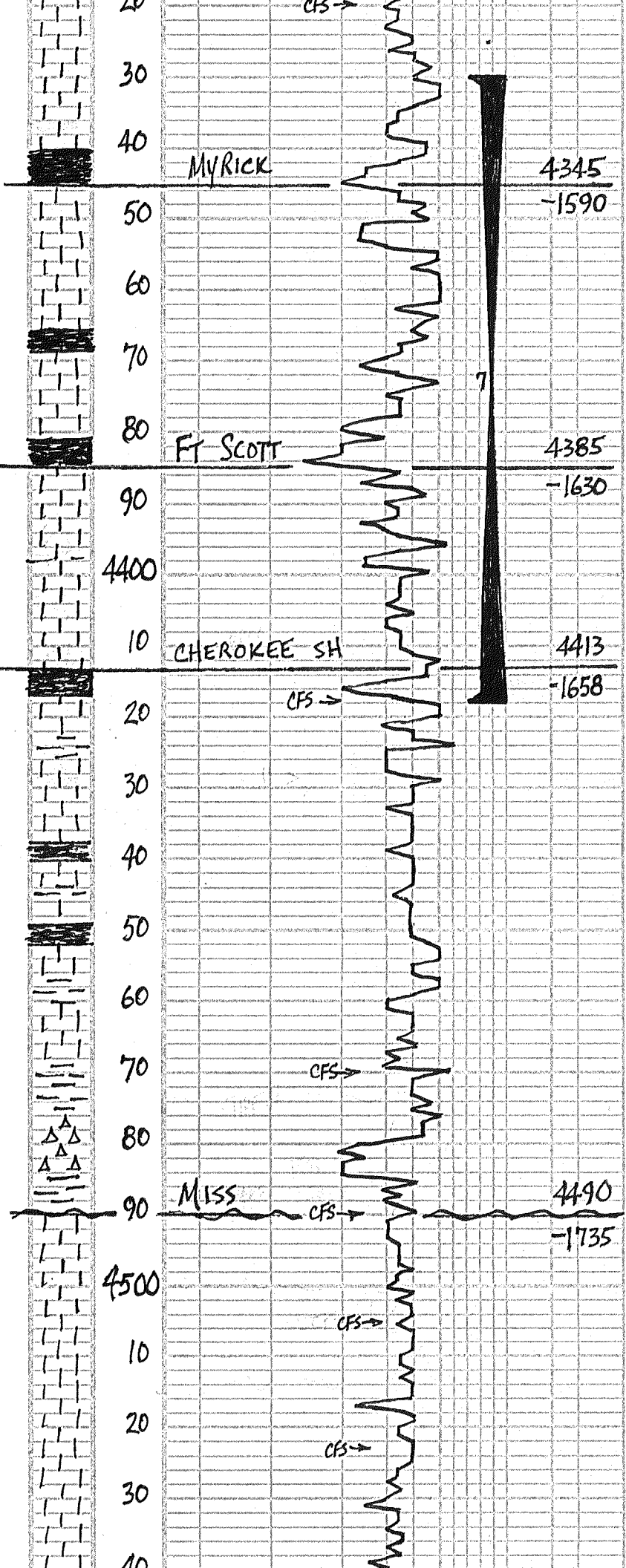
20 PURP SHS FEW GRAY SEMI-CLD WH-CRM FN-XLN LS POOR Ø NS 30 MIN: FLOOD DULL WH-V. LT GRAY & DULL WH FN-XLN LS POOR Ø DNSE-CRY NS NO ODOR 60 MIN: FLOOD DULL WH-LT CRM LS

FF: DEAD-FLUSH NO HELL  
REC: 5' OIL SPT MUD = 1% O  
SIP: 418-112  
IFP: 35-36 FFP: 37-38

DST #4 4101-4135'  
30-45-45-60  
IF: WK BUILT TO 8 1/2"  
IS: V. WK 1/4" BB.  
FF: GD BUILT TO BOB 2 1/2 MIN  
FS: V. WK SURF BB  
REC: 290' GIP  
70' OM = 25% O, 75% M  
SIP: 275-456  
IFP: 41-54 FFP: 58-68

DST #5 4131-4192  
30-45-45-60  
IF: WK BUILT TO 1 1/2"  
FF: DEAD-FLUSH-SURGE  
REC: 5' MUD + 50  
SIP: 83-68  
IFP: 52-53 FFP: 54-55

DST #6 4187-4286'  
30-30-30-30  
IF: V. WK 1/4" SURF BLOW  
FF: DEAD-FLUSH-SURGE  
REC: 5' MUD  
SIP: 108-93  
IFP: 73-75 FFP: 75-77



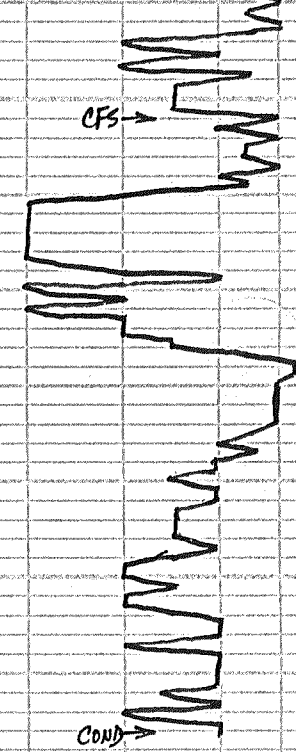
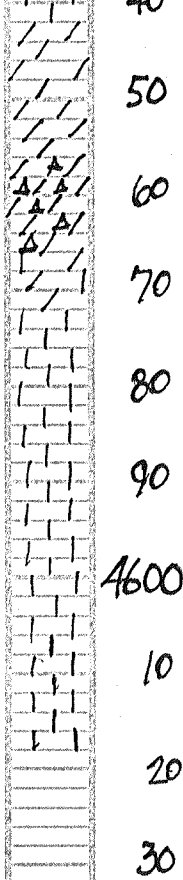
- 00 WH: FLOOD WH: LI CRM. LS  
FN: XLN LS - NS NO ODOR  
DNSE - CKY
- 40 WH - LT CRM - V. LT TAN FN: XLN  
LS - POOR φ - NS NO ODOR
- 50 WH - LT CRM FN: XLN LS - NS  
INC LT GRAY EARTH SHS
- 60 LT CRM V. COOL: FOSS. LS W/ FAIR  
FOSS - INTER COOL φ W/ S LT GFO  
CLEAN! FAIR AMT P/S LS - FAIR ODOR
- 70 WH - LT CRM FN: XLN LS, POOR φ  
DNSE - CKY NS NO ODOR & BLK SH
- 80 WH - LT CRM SEMI - FOSS LS W/ FAIR  
FOSS φ W/ S LT GFO LT ODOR  
CLEAN! LOTS GRAY - GRN BLK SHS
- 90 LT CRM TAN FOSS LS W/ FAIR FOSS  
φ S LT GFO LT ODOR D ORED  
BLK SHS! CLEAN RKS
- 00 FLOOD BLK SHS!
- 10 LT CRM FN: XLN LS POOR φ FEW  
PCS W/ LT STN IN POOR FOSS φ  
SLI - CKY
- 18) WH - LT CRM SLI - FOSS LS W/ POOR  
φ FEW PCS W/ SCAT LT STN  
V S LT GFO FEW ODOR SLI GRAY  
30 MIN: LT CRM LS POOR φ FEW  
W/ LT STN NO φ INC BLK SHS  
60 MIN: INC BLK SHS LT CRM LS  
POOR φ - NS NO ODOR  
70 LOTS LT GRAY FN: XLN LS & LT GRAY SH  
NS NO ODOR
- 40 FLOOD WH - LT GRAY FN: XLN LS  
POOR φ - NS NO ODOR DNSE - CKY
- 50 WH - V. LT GRAY FN: XLN LS DNSE -  
CKY - NS NO ODOR
- 60 FLOOD PURE WH FN: XLN LS  
DNSE - CKY POOR φ - NS NO ODOR
- 70) LS AA - NS & LOTS GRAY - BLUE SHS  
V. FEW GRAY V FNGR SST - NS  
30 MIN: WH - LT CRM FN: XLN LS  
POOR φ - NS LOTS GRAY - BLK SHS  
60 MIN: LS AA - NS FEEL YELLOW  
SHS TRACE ORANGE Δ - NS
- 80 WH FN: XLN LS BRN SHS & FEW  
YELL SHS & FEW GRAY Δ - NS
- 90 WH - VELL - ORANGE WEA Δ P-F φ  
NS NO ODOR  
30 MIN: LOTS YELL - GOLD WEA Δ - NS  
& LT PURPLE FN - GR SST - QUARTZITE  
φ - FOS - NS NO ODOR  
60 MIN: Δ AA - NS & PURPLE SST -  
QUARTZITE - NS NO ODOR
- 05) FLOOD PURPLE & BLUE - GRN SHS  
30 MIN: FLOOD PURE WH & V. LT VELL  
FN: XLN CKY LS POOR φ NS NO ODOR  
60 MIN: WH - LT CRM - LT VELL LS POOR  
φ DNSE - CKY - NS NO ODOR  
WH - CRM - LT TAN FN - MD - XLN LS - NS
- 23) FLOOD WH FN: MD - XLN LS DNSE -  
CKY POOR φ - NS NO ODOR  
30 MIN: WH - CRM - LT GRAY LS - NS  
60 MIN: FLOOD PURE WH CKY LS  
POOR φ - NS NO ODOR
- 40 WH - LT CRM FN: MD - XLN LS POOR φ  
NS NO ODOR CKY - DNSE
- 50 WH - CRM - LT BUFF - PEACH CKY LS  
POOR φ - NS NO ODOR  
30 MIN: FLOOD WH V. MD LS

DST #7 4330'-4418'  
30-45-30-45  
IF: WK BUILT TO 1 3/4"  
FF: SURE BLOW DIED 18 MINS  
REC: 10' MUD + OS = 17.0  
SIP: 124.93  
IFP: 66-71 FFP: 72-72

ADDING MUD  
⚡

MUD: COV  
VISC: 62 FILT: 7.2  
WT: 9.3 CHL: 1,700





RTD 4616'  
LTD 4616'

POOR  $\phi$  - NS NO ODOR  
 FEEN V. LT GRAY V. FN GR DOLO POOR  $\phi$   
 NS NO ODOR SOFT  
 70 - LT GRAY DOLO AA & LT GRAY SHS  
 - GUMBO NS NO ODOR  
 80 LT GRAY V. FN GR DOLO & LT GRAY  
 SHLY MEALY DOLO NS NO ODOR  
 90 FLOOD V. LT BLUE GRAY SHARP  $\Delta$   
 NS ALSO PURE WH V. FN GR DOLO  
 POOR  $\phi$  - NS NO ODOR, SOFT CLAY

00 FLESH - LT BUFF FN XLN LS  
 POOR  $\phi$  - NS NO ODOR  
 10 LOTS V. LT BLUE GRAY SHARP  $\Delta$   
 NS & LT GRAY FN XLN DOLO &  
 LS POOR  $\phi$  - NS SOFT CLAY  
 16) LOTS LT BLUE GRAY  $\Delta$  - NS  
 LOTS LT PEACH FN XLN LS  
 POOR  $\phi$  - NS NO ODOR  
 30 MIN: PRED LT BLUE GRAY  $\Delta$   
 SHARP - NS NO ODOR

E NOON, THURS. 12-13-12  
 SHORT TRIP 7 STDS COND 1 1/2 HRS.