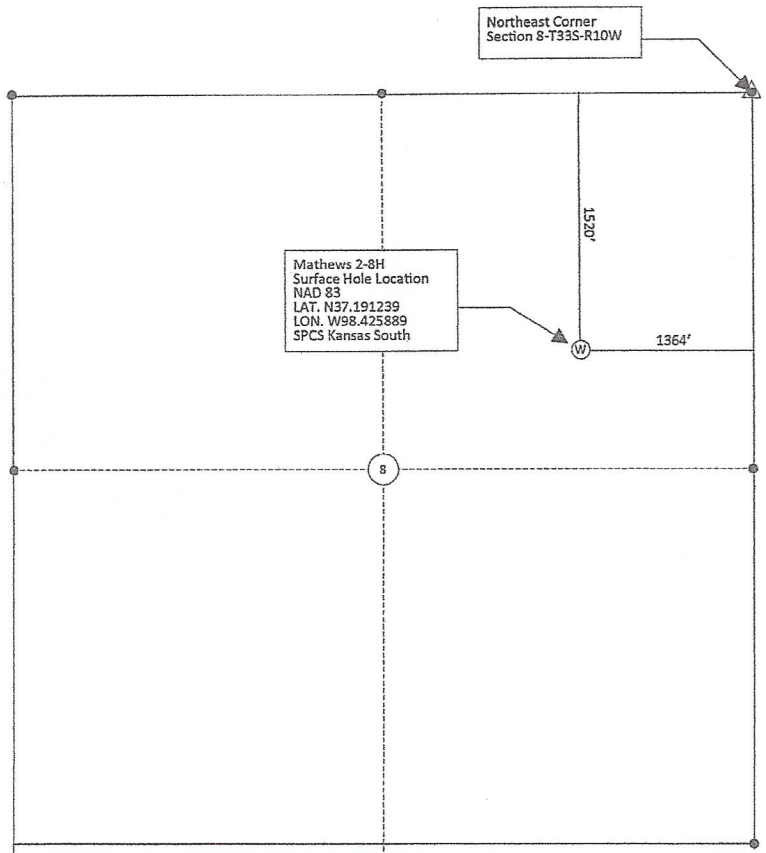


Approx. Scale in Feet: 1310



Lease Name: Mathews

Well No. 2-8H

Well loc. Co./St.: Barber County, KS

Well loc. Section: 8-T33S-R10W

Survey Datums (shown on drawing)

Horz. Datum NAD83

Kansas SPCS South Zone (US Feet)

*This is to certify that this map was made by me and that, to the best of my knowledge, is true and correct.*