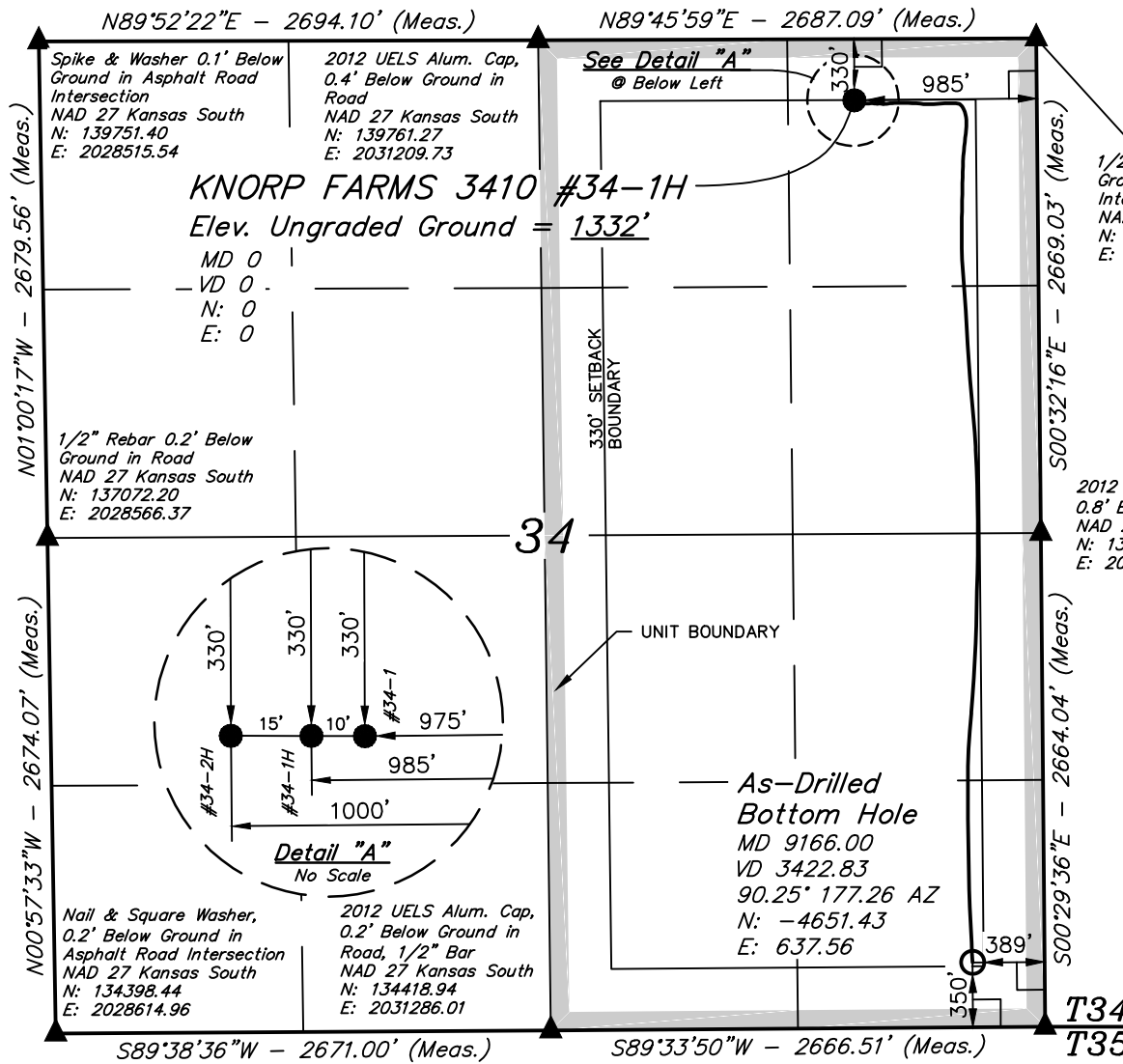


# T34S, R10W, 6th P.M.

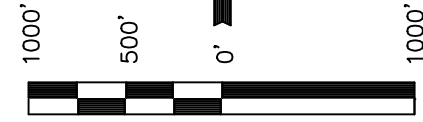
SGOMI



Well location, KNORP FARMS 3410 #34-1H, located as shown in the NE 1/4 NE 1/4 of Section 34, T34S, R10W, 6th P.M., Barber County, Kansas.

## BASIS OF ELEVATION

SPOT ELEVATION LOCATED AT THE SOUTHWEST CORNER OF SECTION 12, T35S, R10W, 6th P.M. TAKEN FROM THE CORWIN, QUADRANGLE, KANSAS, 7.5 MINUTE QUAD (TOPOGRAPHIC MAP) PUBLISHED BY THE UNITED STATES DEPARTMENT OF THE INTERIOR, GEOLOGICAL SURVEY. SAID ELEVATION IS MARKED AS BEING 1274 FEET.



SCALE

## CERTIFICATE

THIS IS TO CERTIFY THAT THE ABOVE PLAT WAS PREPARED FROM FIELD NOTES OF ACTUAL SURVEYS MADE BY ME OR UNDER MY SUPERVISION AND THAT THE SAME ARE TRUE AND CORRECT TO THE BEST OF MY KNOWLEDGE AND BELIEF.

*Robert J. [Signature]*

REGISTERED LAND SURVEYOR  
REGISTRATION NO. 1457  
STATE OF KANSAS 03-15-13

## LEGEND:

- └─┘ = 90° SYMBOL
- = PROPOSED WELL HEAD.
- ▲ = SECTION CORNERS LOCATED.

BASIS OF BEARINGS IS A G.P.S. OBSERVATION.

## BASIS OF BEARINGS

NAD 83 (#34-1H AS-DRILLED BOTTOM HOLE)	NAD 83 (#34-1H SURFACE LOCATION)
LATITUDE = 37°02'12.53" (37.036814)	LATITUDE = 37°02'58.52" (37.049589)
LONGITUDE = 98°23'07.39" (98.385386)	LONGITUDE = 98°23'15.27" (98.387575)
NAD 27 (#34-1H AS-DRILLED BOTTOM HOLE)	NAD 27 (#34-1H SURFACE LOCATION)
LATITUDE = 37°02'12.44" (37.036789)	LATITUDE = 37°02'58.43" (37.049564)
LONGITUDE = 98°23'06.13" (98.385036)	LONGITUDE = 98°23'14.01" (98.387225)
STATE PLANE NAD 27 (KANSAS SOUTH)	STATE PLANE NAD 27 (KANSAS SOUTH)
N: 134789.53 E: 2033559.63	N: 139440.25 E: 2032915.37

UINTAH ENGINEERING & LAND SURVEYING			
85 SOUTH 200 EAST - VERNAL, UTAH 84078			
(435) 789-1017			
SCALE 1" = 1000'	DATE SURVEYED: 02-26-13	DATE DRAWN: 03-12-13	
PARTY J.P. B.L. C.A.G.	REFERENCES G.L.O. PLAT		
WEATHER HOT	FILE SGOMI		