

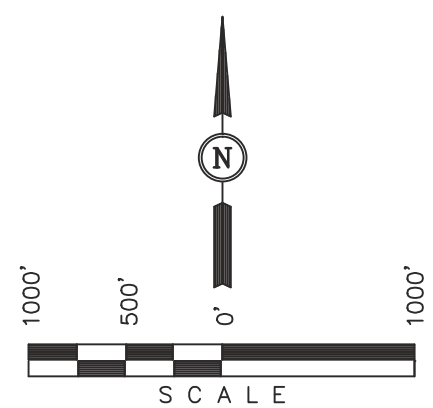
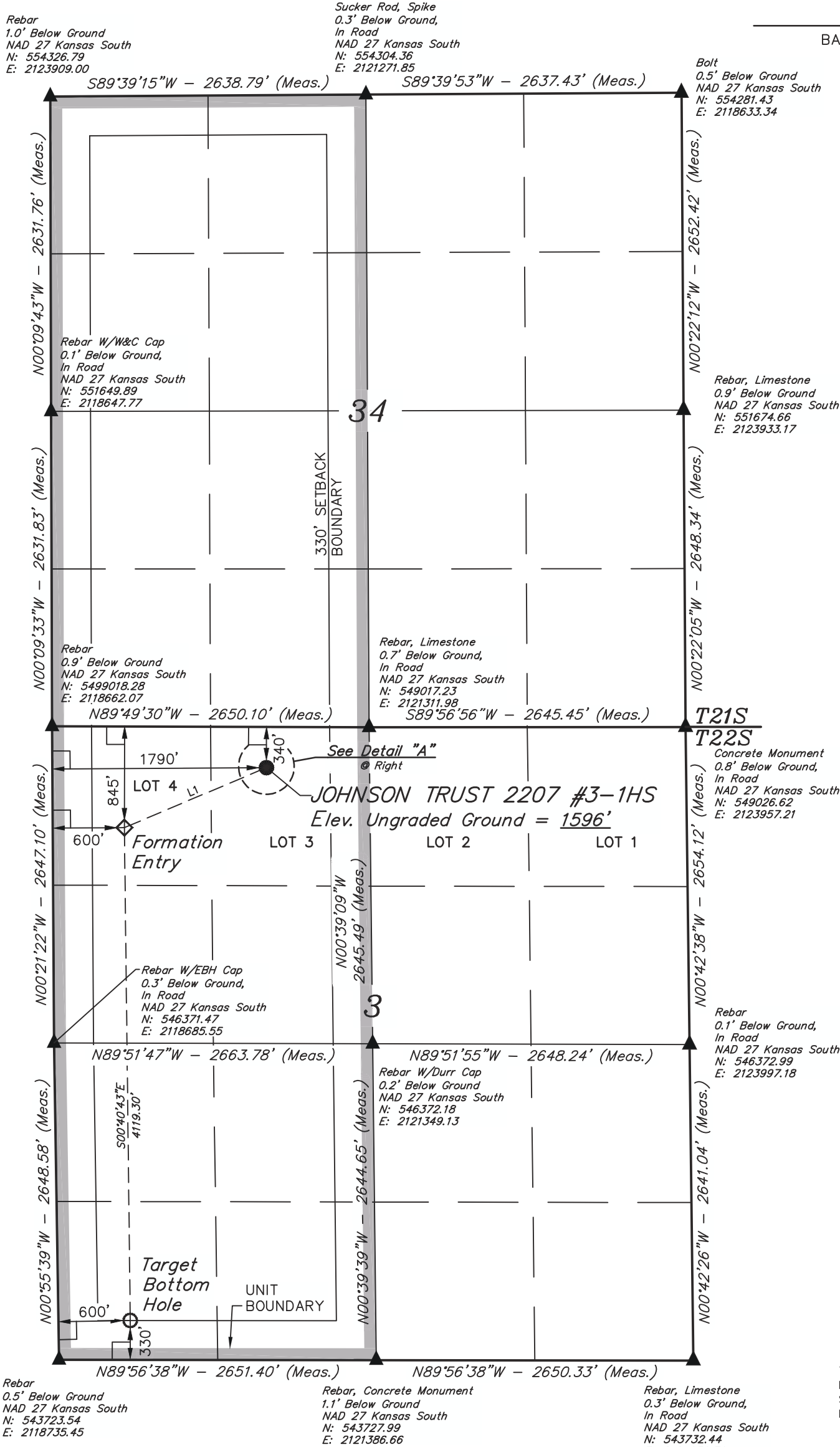
Well location, JOHNSON TRUST 2207 #3-1HS, located as shown in the Lot 3 of Section 3, T22S, R7W, 6th P.M., Reno County, Kansas.

BASIS OF ELEVATION

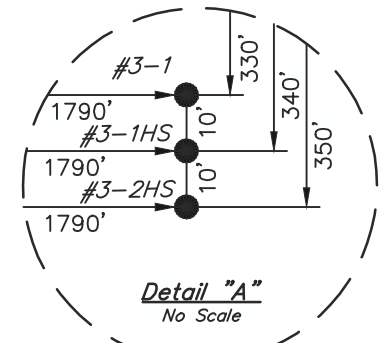
SPOT ELEVATION LOCATED AT THE SW CORNER OF SECTION 18, T22S, R7W, 6th P.M. TAKEN FROM THE ALDEN SE, QUADRANGLE, KANSAS, RENO COUNTY, 7.5 MINUTE QUAD (TOPOGRAPHIC MAP) PUBLISHED BY THE UNITED STATES DEPARTMENT OF THE INTERIOR, GEOLOGICAL SURVEY, SAID ELEVATION IS MARKED AS BEING 1688 FEET.

BASIS OF BEARINGS

BASIS OF BEARINGS IS A G.P.S. OBSERVATION.



- LEGEND:**
- └─┘ = 90° SYMBOL
 - = PROPOSED WELL HEAD.
 - ▲ = SECTION CORNERS LOCATED.



CERTIFICATE
 THIS IS TO CERTIFY THAT THE ABOVE PLAT WAS PREPARED FROM FIELD NOTES OF ACTUAL SURVEYS MADE BY ME OR UNDER MY SUPERVISION AND THAT THE SAME ARE TRUE AND CORRECT TO THE BEST OF MY KNOWLEDGE AND BELIEF.
 Justin S. Gomi
 REGISTERED LAND SURVEYOR
 REGISTRATION NO. 1481
 STATE OF KANSAS
 18-13

LINE TABLE		
LINE	DIRECTION	LENGTH
L1	S67°05'55"W	1288.35'

REVISED: 03-28-13 C.A.G.

UINTAH ENGINEERING & LAND SURVEYING
 85 SOUTH 200 EAST - VERNAL, UTAH 84078
 (435) 789-1017

SCALE 1" = 1000'	DATE SURVEYED: 02-11-13	DATE DRAWN: 02-13-13
PARTY B.L. T.B. C.A.G.	REFERENCES G.L.O. PLAT	
WEATHER COLD	FILE SGOMI	

NAD 83 (#3-1HS TARGET BOTTOM HOLE)	NAD 83 (#3-1HS FORMATION ENTRY)	NAD 83 (#3-1HS SURFACE LOCATION)
LATITUDE = 38°09'36.44" (38.160122) LONGITUDE = 98°05'07.13" (98.085314)	LATITUDE = 38°10'17.16" (38.171433) LONGITUDE = 98°05'07.65" (98.085458)	LATITUDE = 38°10'22.09" (38.172803) LONGITUDE = 98°04'52.78" (98.081328)
LATITUDE = 38°09'36.40" (38.160111) LONGITUDE = 98°05'05.93" (98.084981)	LATITUDE = 38°10'17.12" (38.171422) LONGITUDE = 98°05'06.45" (98.085125)	LATITUDE = 38°10'22.05" (38.172792) LONGITUDE = 98°04'51.57" (98.080992)
STATE PLANE NAD 27 (KANSAS SOUTH) N: 544054.52 E: 2119329.28	STATE PLANE NAD 27 (KANSAS SOUTH) N: 5481730.10 E: 2119269.54	STATE PLANE NAD 27 (KANSAS SOUTH) N: 548677.57 E: 2120454.92