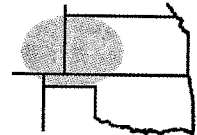


**Pro-Stake LLC**  
 Oil Field & Construction Site Staking  
 P.O. Box 2324  
 Garden City, Kansas 67846  
 Office/Fax: (620) 276-6159  
 Cell: (620) 272-1499



**023141L**  
 PLAT NO.

**10721**  
 INVOICE NO.

**Stelbar Oil Corporation, Inc.**

**John Enterprises #2-2**

**Morton County, KS**  
 COUNTY

**2 31s 41w**  
 Sec. Twp. Rng.

**1841' FSL - 770' FWL**  
 LOCATION SPOT

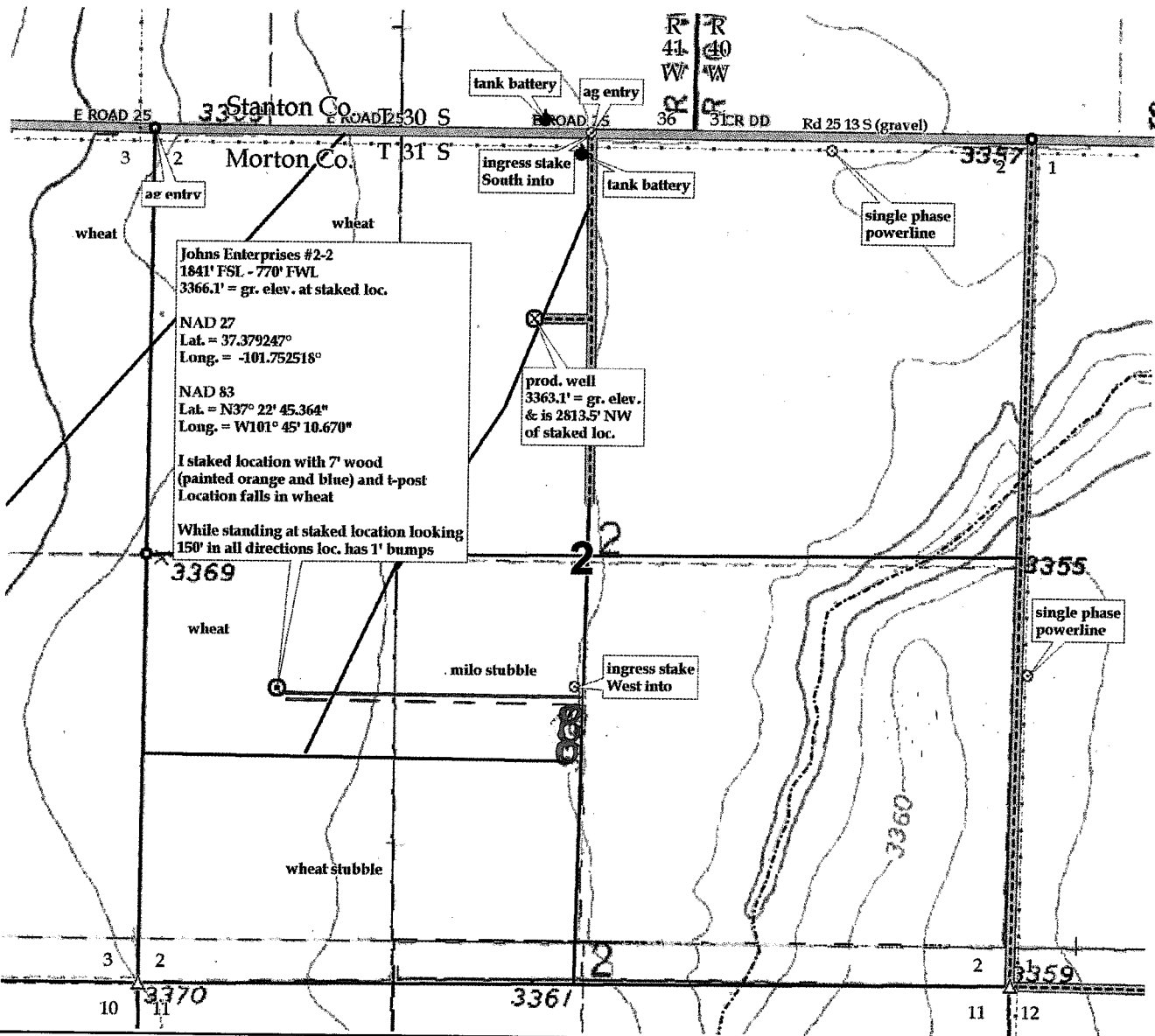
SCALE: **1" = 1000'**  
 DATE STAKED: **Mar. 6<sup>th</sup>, 2013**  
 MEASURED BY: **Luke R.**  
 DRAWN BY: **Drew H.**  
 AUTHORIZED BY: **Bill B.**



GR. ELEVATION: **3366.1'**

**Directions:** From the NW corner of Johnson City, KS at the intersection of Hwy 27 & Hwy 160 East - Now go 13.1 miles South on Hwy 27 - Now go 0.7 mile East on Rd 25 13S to the NW corner of section 2-31s-41w - Now go 0.5 mile East on Rd 25 13S to ingress stake South into - Now go 0.4 mile South on trail - Now go approx. 1300' South through milo stubble to ingress stake West into - Now go approx. 1490' West through milo stubble - Now go approx. 370' through wheat into staked location.  
 Final ingress must be verified with land owner or Operator.

*This drawing does not constitute a monumented survey or a land survey plat. This drawing is for construction purposes only.*



No Power Lines  
 Tank Battery  
 Pipeline  
 Lease Road