



Trans Pacific Oil Corporation

GEOLOGICAL REPORT

DRILLING TIME & SAMPLE LOGS

REPORT PREPARED BY FRANK S. MAREDEGOLD

COMPANY: Trans Pacific Oil Corp

LEASE: Melody Unit #3

FIELD: Nexus

LOCATION: 2500' FSL & 1050' FWL

SEC 2 T15P 18S R06E 24W

COUNTY: Ness STATE: Kansas

CONTRACTOR: Duke Rig #1

SPUD: 12-18-12 COMP: 1-1-13

SAMPLES SHVED FROM 3700' TO 4470'

FORMATION: SHALE E LOG DAVINA

ANHYDRITE 1650' 1700'

HEEBNER 3749' 1378'

LANSING 3790' 1419'

3850'

3900'

3950'

4000'

4050'

4100'

4150'

4200'

4250'

4300'

4350'

4400'

4450'

4331' to 4370'

4331' to 4370'

4331' to 4370'

4331' to 4370'

4331' to 4370'

4331' to 4370'

4331' to 4370'

SHALE SANDSTONE LIMESTONE DOLOMITE HALITE ANHYDRITE/GYPSUM

Anhydrite 1757 + 716

Base Anhydrite 1795 + 676

Heebner 3749 - 1378

Lansing 3790 - 1419

Stark 4027 - 1656

Hushpuckney 4059 - 1688

BKC 4087 - 1716k

Marmaton 4135 - 1764

Pawnee 4199 - 1828

Fort Scott 4286 - 1915

Cherokee 4311 - 1940

Cherokee SS 4362 - 1991

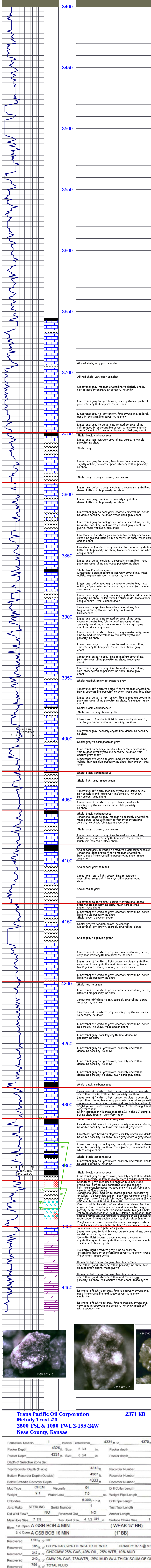
Mississippian 4400 - 2029

2371 KB

Melody Unit #3

2500' FSL & 1050' FWL

Ness County, Kansas



Trans Pacific Oil Corporation Melody Unit #3 2500' FSL & 1050' FWL 2-185-24W Ness County, Kansas

Table with 4 columns: Formation Test No., Interval Tested from, to, Total Depth. Rows include Packer Depth, Packer Selective, and Depth of Seals Zone Set.

Table with 4 columns: Recorder Depth (Inside/Outside), Recorder Number, Cap, P.S.I. Rows include Top Recorder Depth, Bottom Recorder Depth, and Below Straddle Recorder Depth.

Table with 4 columns: Mud Type, Viscosity, Drill Collar Length, I.D., I.D., Weight, Water Loss, Weight Pipe Length, Drill Pipe Length, I.D., I.D., Chokes, Serial Number, Test Tool Length, I.D., Size, Size, Main Hole Size, Tool Joint Size, Surface Choke Size, Bottom Choke Size.

Table with 2 columns: Blow, 1st Open, 2nd Open. Includes GSB BOB 4 MIN and GSB BOB 16 MIN.

Table with 2 columns: Recovered, GOIP, SHOCMW, TOTAL GAS, TOTAL FLUID, CHLOR. Includes 1730 ft of GOIP, 342 ft of SHOCMW, 249 ft of TOTAL GAS, 756 ft of TOTAL FLUID, and 15,000 PPM PH-7.0.

Table with 2 columns: Remarks, Price Job, Other Charges, Insurance, Total. Includes TOOL SAMPLE: 2% Oil, 93% WTR 5% MUD.

Table with 4 columns: Time Set Packer(s), Time Started Off Bottom, Maximum Temperature. Includes 11:15 A.M., 3:30 P.M., 120.

Table with 4 columns: Initial Hydrostatic Pressure, Initial Flow Period, Initial Closed In Period, Final Flow Period, Final Closed In Period, Final Hydrostatic Pressure. Includes 2126 P.S.I., 30, 75, 60, 90, 2112 P.S.I.

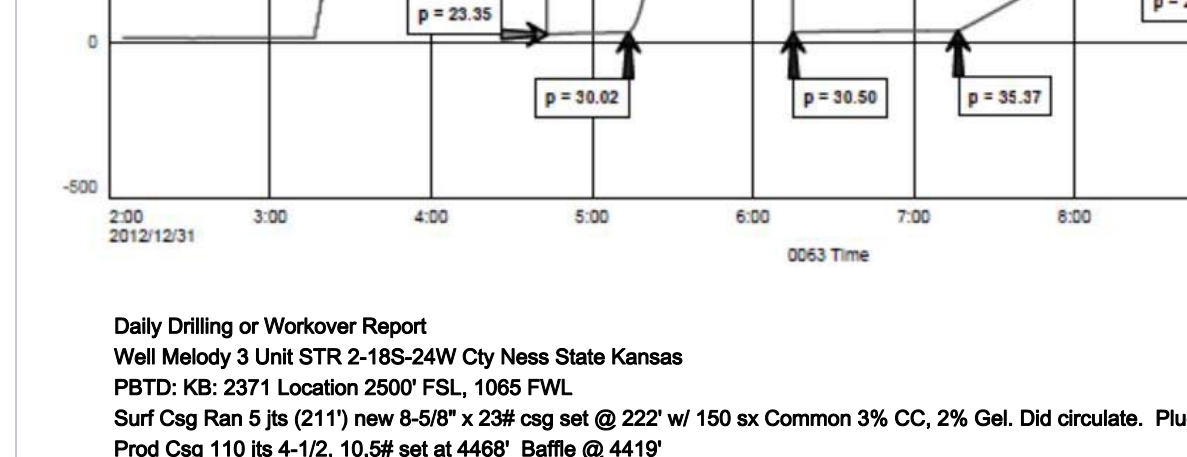


Table with 4 columns: Recorder Depth (Inside/Outside), Recorder Number, Cap, P.S.I. Rows include Top Recorder Depth, Bottom Recorder Depth, and Below Straddle Recorder Depth.

Table with 4 columns: Mud Type, Viscosity, Drill Collar Length, I.D., I.D., Weight, Water Loss, Weight Pipe Length, Drill Pipe Length, I.D., I.D., Chokes, Serial Number, Test Tool Length, I.D., Size, Size, Main Hole Size, Tool Joint Size, Surface Choke Size, Bottom Choke Size.

Table with 2 columns: Blow, 1st Open, 2nd Open. Includes WSB, INC. TO 2 3/4" (NO BB) and WSB, INC. TO 1 3/4" (NO BB).

Table with 2 columns: Recovered, HOCM, TOTAL FLUID. Includes 10 ft of HOCM 40% OIL, 60% MUD and 15 ft of TOTAL FLUID.

Table with 2 columns: Remarks, Price Job, Other Charges, Insurance, Total. Includes TOOL SAMPLE: 50% Oil, 50% MUD.

Table with 4 columns: Time Set Packer(s), Time Started Off Bottom, Maximum Temperature. Includes 4:45 A.M., 8:35 A.M., 110.

Table with 4 columns: Initial Hydrostatic Pressure, Initial Flow Period, Initial Closed In Period, Final Flow Period, Final Closed In Period, Final Hydrostatic Pressure. Includes 2126 P.S.I., 30, 60, 60, 271, 2118 P.S.I.



Daily Drilling or Workover Report Well Melody 3 Unit STR 2-185-24W Ness County, Kansas

12/18/2012 Move in, rig up. Spud @ 4:00 p.m. 12/18/2012 Drilling @ 3:07' 12/19/2012 Drilling @ 1:07' 12/21/2012 Drilling @ 10:57' 12/22/2012 Start up rig. Will resume drilling later this morning @ 3:15'. 12/28/2012 Drilling @ 5:53' 12/29/2012 Drilling @ 5:07' 12/30/2012 Testing @ 4:37'

DST #1 4331'-4370' (Cherokee Sand) Times: 30-75:50-90 1st op: strong blow BOB in 4 min. 2nd op: strong blow BOB in 16 min. Recovered: 1730 gas in pipe 185 gassy oil (2% gas, 98% oil with a trace) 342 gas & slightly water & mud out oil (25% gas, 40% oil, 25% water, 10% mud) 249 gassy muddy water (2% gas, 73% water, 25% mud w/ thick scum of oil) 756 total liquid recovery 156 total liquid recovery 55-225# ISIP: 598# IHP: 212# FFP: 238-333# FSIP: 385# FHP: 212 12/31/2012 Testing @ 4:38' DST #2 4369'-4385' (Cherokee Sand) Times: 30-60-60-40 1st op: weak blow increasing to 2.34" 2nd op: weak blow increasing to 1.34" Recovered: 17' clean oil (100% oil) 2 heavy oil cut mud (40% oil, 60% mud) 15' total liquid recovery IFF: 22-30# ISIP: 665# IHP: 213# FFP: 31-38# FSIP: 314# FHP: 218# 12/29/2012 DST 4477, LTD 472. Ran 110 lbs new Tagged bottom pulled out and set shoe at 4468', baffle at 4419'. PC @ 1648. Ran out baskets above floatshoe and below PC. Swirl pumped 500 gal mud flush followed by 170 ex EA-2 cont containing 10% salt, 5% caustic, 1/4# floccle, & 1/2# CFR. Plug nipple w/30 sz. Plug down 12:15 P.M. 1/1/13. Swirl cont to test @ 23628.

Log Tops: Anhydrite 1659' (+ 712) +2 1694' (+ 710) flat Heebner 3749' (+ 678) +1 3750' (+ 677) flat Lansing 3790' (+ 1378) +2 3792' (+ 1378) +1 Stark 4027' (+ 1656) +4 4028' (+ 1657) +3 BKC 4083' (+ 1712) +6 4088' (+ 1715) +3 Pawnee 4199' (+ 1629) +2 4202' (+ 1631) +1 Ft. Scott 4288' (+ 1915) +1 4287' (+ 1916) flat Cherokee Sand 4382' (+ 1991) -3 4382' (+ 1991) -3 2nd Sand 4409' (+ 2038) +2 4407' (+ 2039) +10 Mississippi 4477' (+ 2098) LTD 4472' (+ 2091) perfs

12/18/2012 Move in, rig up. Spud @ 4:00 p.m. 12/18/2012 Drilling @ 3:07' 12/19/2012 Drilling @ 1:07' 12/21/2012 Drilling @ 10:57' 12/22/2012 Start up rig. Will resume drilling later this morning @ 3:15'. 12/28/2012 Drilling @ 5:53' 12/29/2012 Drilling @ 5:07' 12/30/2012 Testing @ 4:37'

DST #1 4331'-4370' (Cherokee Sand) Times: 30-75:50-90 1st op: strong blow BOB in 4 min. 2nd op: strong blow BOB in 16 min. Recovered: 1730 gas in pipe 185 gassy oil (2% gas, 98% oil with a trace) 342 gas & slightly water & mud out oil (25% gas, 40% oil, 25% water, 10% mud) 249 gassy muddy water (2% gas, 73% water, 25% mud w/ thick scum of oil) 756 total liquid recovery 156 total liquid recovery 55-225# ISIP: 598# IHP: 212# FFP: 238-333# FSIP: 385# FHP: 212 12/31/2012 Testing @ 4:38' DST #2 4369'-4385' (Cherokee Sand) Times: 30-60-60-40 1st op: weak blow increasing to 2.34" 2nd op: weak blow increasing to 1.34" Recovered: 17' clean oil (100% oil) 2 heavy oil cut mud (40% oil, 60% mud) 15' total liquid recovery IFF: 22-30# ISIP: 665# IHP: 213# FFP: 31-38# FSIP: 314# FHP: 218# 12/29/2012 DST 4477, LTD 472. Ran 110 lbs new Tagged bottom pulled out and set shoe at 4468', baffle at 4419'. PC @ 1648. Ran out baskets above floatshoe and below PC. Swirl pumped 500 gal mud flush followed by 170 ex EA-2 cont containing 10% salt, 5% caustic, 1/4# floccle, & 1/2# CFR. Plug nipple w/30 sz. Plug down 12:15 P.M. 1/1/13. Swirl cont to test @ 23628.