

OPERATOR

Company: ANDY WERTH DBA WERTH EXPLORATION TRUST
 Address: 1308 SCHWALLER AVE
 HAYS, KANSAS 67601

Contact Geologist: ANDY WERTH
 Contact Phone Nbr: 785-625-4968
 Well Name: DUBOIS-SHELDON # 1
 Location: NE SE SE SW Sec.15-11s-26w API: 15-063-22,100-00-00
 Pool: WILDCAT Field: UNNAMED
 State: KANSAS Country: USA

Scale 1:240 Imperial

Well Name: DUBOIS-SHELDON # 1
 Surface Location: NE SE SE SW Sec.15-11s-26w
 Bottom Location:
 API: 15-063-22,100-00-00
 License Number: 30259
 Spud Date: 3/19/2013 Time: 8:00 PM
 Region: GOVE COUNTY
 Drilling Completed: 3/24/2013 Time: 3:45 PM
 Surface Coordinates: 456' FSL & 2849' FEL
 Bottom Hole Coordinates:
 Ground Elevation: 2638.00ft
 K.B. Elevation: 2645.00ft
 Logged Interval: 0.00ft To: 0.00ft
 Total Depth: 4520.00ft
 Formation: LANSING-KANSAS CITY
 Drilling Fluid Type: CHEMICAL/FRESH WATER GEL

SURFACE CO-ORDINATES

Well Type: Vertical
 Longitude: Latitude:
 N/S Co-ord: 456' FSL
 E/W Co-ord: 2849' FEL

LOGGED BY

Company: SOLUTIONS CONSULTING, INC
 Address: 108 W 35TH
 HAYS, KS 67601

Phone Nbr: (785) 639-1337
 Logged By: Geologist Name: HERB DEINES

CONTRACTOR

Contractor: ROYAL DRILLING INC.
 Rig #: 1
 Rig Type: MUD ROTARY
 Spud Date: 3/19/2013 Time: 8:00 PM
 TD Date: 3/24/2013 Time: 3:45 PM
 Rig Release: 3/24/2013 Time: 11:00 PM

ELEVATIONS

K.B. Elevation: 2645.00ft Ground Elevation: 2638.00ft
 K.B. to Ground: 7.00ft

NOTES

RECOMMENDATION TO PLUG AND ABANDON WELL BASED ON NEGATIVE RESULTS OF DST #1.

NO OPEN HOLE LOGS WERE RAN ON THIS WELL.

DRILL STEM TESTING BY: SUPERIOR TESTERS ENTERPRISES LLC - ONE (1) CONVENTIONAL TEST

FORMATION TOPS SUMMARY AND CHRONOLOGY OF DAILY ACTIVITY

DUBOIS-SHELDON # 1

456' FSL & 2849' FEL, SW/4

Sec. 15-11s-26w

2638' GL 2645' KB

DUBOIS-HAILEY #1

E2 NW NW NW

Sec. 23-11s-26w


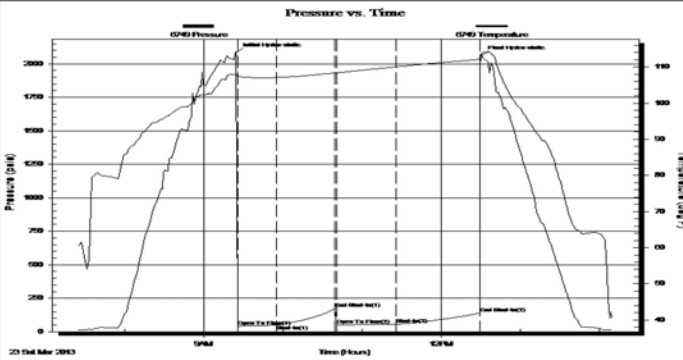
Reference Well

<u>FORMATION</u>	<u>SAMPLE TOPS</u>	<u>LOG TOPS</u>	<u>LOG TOPS</u>	
Anhydrite	2218+ 427		+433	+6
B-Anhydrite	2259+ 386		+391	+5
Topeka			-1032	
Heebner Shale	3886-1241		-1248	-7
Toronto	3914-1269		-1271	-2
LKC	3929-1284		-1290	-6
BKC	4175-1530		-1537	-7
Pawnee	4322-1677		-1682	-5
Ft Scott	4396-1751		-1752	-1
Cherokee Shale	4421-1776		-1780	-4
Mississippi	4500-1855		NR	
RTD	4520-1875		-1868	

SUMMARY OF DAILY ACTIVITY

- 3-19-13** RU, spud, set 8 5/8" surface pipe to 221' w/ 150 sacks Common, 2%Gel, 3%CC, plug down 9:45 PM
- 3-20-13** 226', drill plug at 6:45am
- 3-21-13** 2434,'drilling, displace mud system 3200'
- 3-22-13** 3646', drilling, pulled pdc bit at 3836'
- 3-23-13** 4060', drilling, DST # 1 4078' – 4110' "I" zone LKC
- 3-24-13** 4570', RTD @ 3:45pm, no logs ran, P&A

DST # 1 LKC "I" ZONE TEST SUMMARY

	<h3>DRILL STEM TEST REPORT</h3>																																					
Werth Exploration Trust 1308 Schw aller Avenue Hays, Kansas 67601+2242 ATTN: Herb Deines	15/11S/26W/Gove Dubois-Sheldon #1 Job Ticket: 17480 DST#: 1 Test Start: 2013.03.23 @ 07:24:00																																					
GENERAL INFORMATION: Formation: Lansing/Kansas City Deviated: No Whipstock: ft (KB) Time Tool Opened: 09:25:30 Time Test Ended: 14:10:00 Test Type: Conventional Bottom Hole (Initial) Tester: Ken Swinney Unit No: 3325 Hays/110 Interval: 4078.00 ft (KB) To 4110.00 ft (KB) (TVD) Total Depth: 4110.00 ft (KB) (TVD) Reference Elevations: 2645.00 ft (KB) Hole Diameter: 7.80 inches Hole Condition: Fair KB to GR/CF: 7.00 ft 2638.00 ft (CF)																																						
Serial #: 6749 Inside Press@RunDepth: 54.35 psia @ 4106.00 ft (KB) Capacity: 5000.00 psia Start Date: 2013.03.23 End Date: 2013.03.23 Last Calib.: 2013.03.23 Start Time: 07:24:00 End Time: 14:10:00 Time On Btm: 2013.03.23 @ 09:24:30 Time Off Btm: 2013.03.23 @ 12:30:30																																						
TEST COMMENT: 1ST Open 30 Minutes/Weak blow /Blow built to 2 1/2 inches in bucket of diesel 1ST Shut In 45 Minutes/No blow back 2ND Open 45 Minutes/Fair blow /Blow built to 7 inches in bucket of diesel 2ND Shut In 60 Minutes/No blow back																																						
	PRESSURE SUMMARY																																					
	<table border="1" style="width: 100%; border-collapse: collapse;"> <thead> <tr> <th>Time (Min.)</th> <th>Pressure (psia)</th> <th>Temp (deg F)</th> <th>Annotation</th> </tr> </thead> <tbody> <tr><td>0</td><td>2082.31</td><td>107.96</td><td>Initial Hydro-static</td></tr> <tr><td>1</td><td>41.31</td><td>107.43</td><td>Open To Flow (1)</td></tr> <tr><td>31</td><td>49.11</td><td>107.07</td><td>Shut-In(1)</td></tr> <tr><td>75</td><td>174.26</td><td>108.34</td><td>End Shut-In(1)</td></tr> <tr><td>77</td><td>49.78</td><td>108.36</td><td>Open To Flow (2)</td></tr> <tr><td>121</td><td>54.35</td><td>110.02</td><td>Shut-In(2)</td></tr> <tr><td>185</td><td>138.97</td><td>112.07</td><td>End Shut-In(2)</td></tr> <tr><td>186</td><td>2059.97</td><td>113.72</td><td>Final Hydro-static</td></tr> </tbody> </table>	Time (Min.)	Pressure (psia)	Temp (deg F)	Annotation	0	2082.31	107.96	Initial Hydro-static	1	41.31	107.43	Open To Flow (1)	31	49.11	107.07	Shut-In(1)	75	174.26	108.34	End Shut-In(1)	77	49.78	108.36	Open To Flow (2)	121	54.35	110.02	Shut-In(2)	185	138.97	112.07	End Shut-In(2)	186	2059.97	113.72	Final Hydro-static	
Time (Min.)	Pressure (psia)	Temp (deg F)	Annotation																																			
0	2082.31	107.96	Initial Hydro-static																																			
1	41.31	107.43	Open To Flow (1)																																			
31	49.11	107.07	Shut-In(1)																																			
75	174.26	108.34	End Shut-In(1)																																			
77	49.78	108.36	Open To Flow (2)																																			
121	54.35	110.02	Shut-In(2)																																			
185	138.97	112.07	End Shut-In(2)																																			
186	2059.97	113.72	Final Hydro-static																																			
Recovery	Gas Rates																																					
<table border="1" style="width: 100%; border-collapse: collapse;"> <thead> <tr> <th>Length (ft)</th> <th>Description</th> <th>Volume (bbl)</th> </tr> </thead> <tbody> <tr><td>40.00</td><td>Oil cut Mud</td><td>0.56</td></tr> <tr><td>0.00</td><td>Oil 15% Mud 85%</td><td>0.00</td></tr> <tr><td> </td><td> </td><td> </td></tr> <tr><td> </td><td> </td><td> </td></tr> <tr><td> </td><td> </td><td> </td></tr> <tr><td> </td><td> </td><td> </td></tr> </tbody> </table>	Length (ft)	Description	Volume (bbl)	40.00	Oil cut Mud	0.56	0.00	Oil 15% Mud 85%	0.00													<table border="1" style="width: 100%; border-collapse: collapse;"> <thead> <tr> <th>Choke (inches)</th> <th>Pressure (psia)</th> <th>Gas Rate (Mcf/d)</th> </tr> </thead> <tbody> <tr><td> </td><td> </td><td> </td></tr> <tr><td> </td><td> </td><td> </td></tr> <tr><td> </td><td> </td><td> </td></tr> </tbody> </table>		Choke (inches)	Pressure (psia)	Gas Rate (Mcf/d)												
Length (ft)	Description	Volume (bbl)																																				
40.00	Oil cut Mud	0.56																																				
0.00	Oil 15% Mud 85%	0.00																																				
Choke (inches)	Pressure (psia)	Gas Rate (Mcf/d)																																				

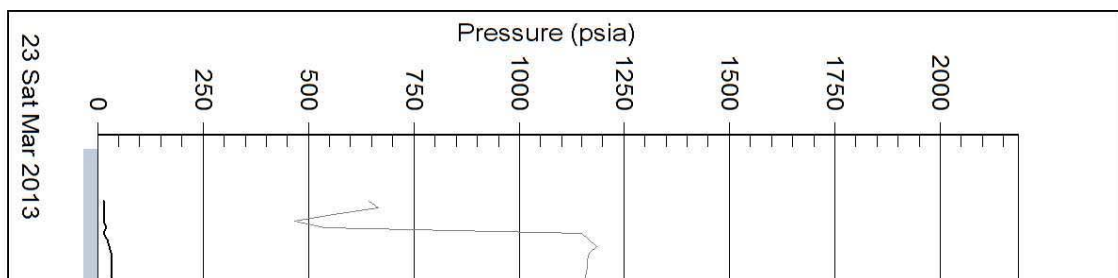
Superior Testers Enterprises LLC

Ref. No: 17480

Printed: 2013.03.23 @ 14:31:20

DST # 1 EXPANDED CHART

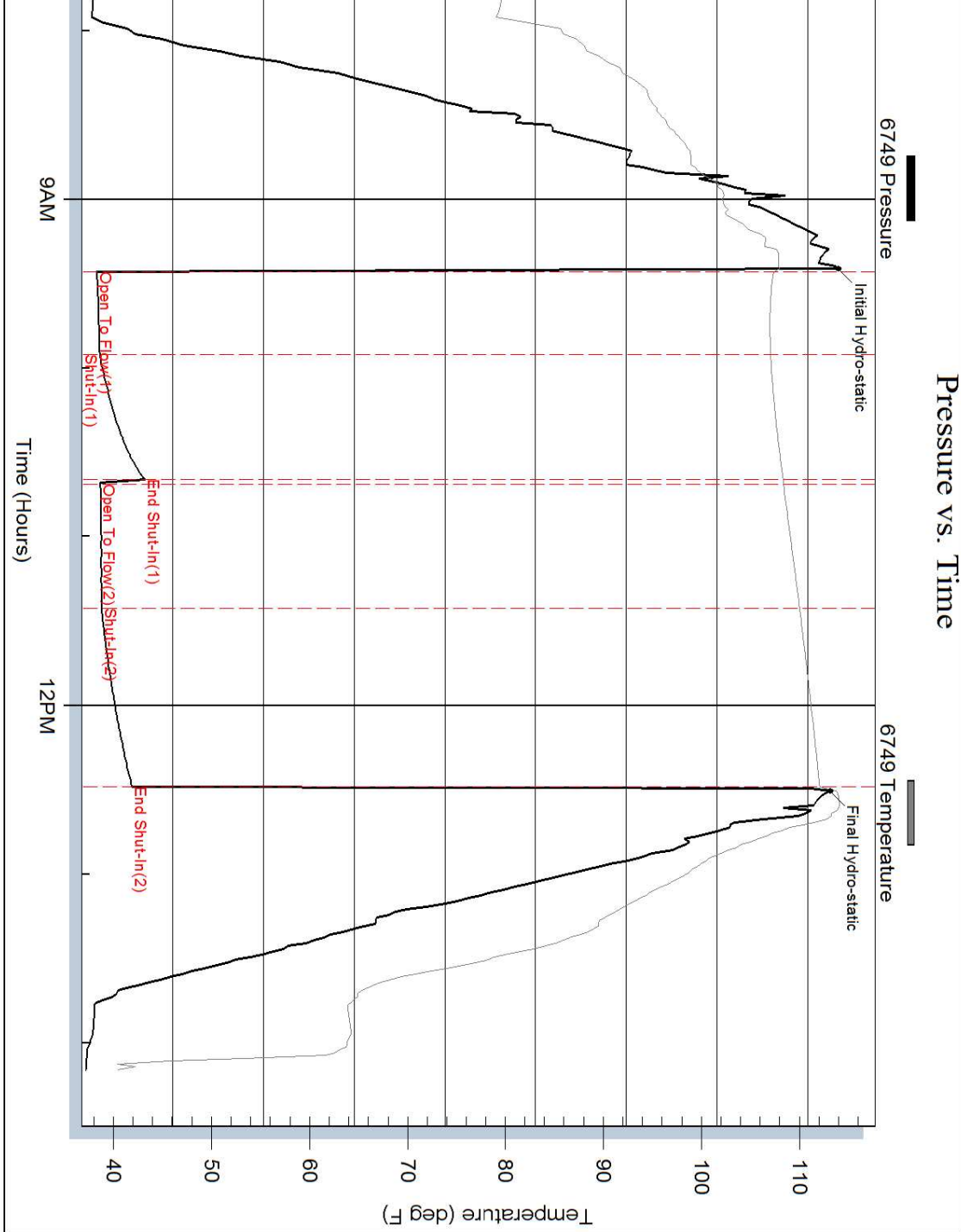
Superior Testers Enterprises



Serial #: 6749

11

Pressure vs. Time



Ref. No: 17480

Printed: 2013.03.23 @ 14:31:21

ROCK TYPES

- | | | | | | | | |
|--|----------|--|----------------------|--|------------|--|----------|
| | Cht vari | | Lmst fw7> shale, grn | | Carbon Sh | | Dol Lime |
| | Clystgy | | shale, gry | | shale, red | | Lscongl |
| | Dolprim | | | | Shcol | | |

ACCESSORIES

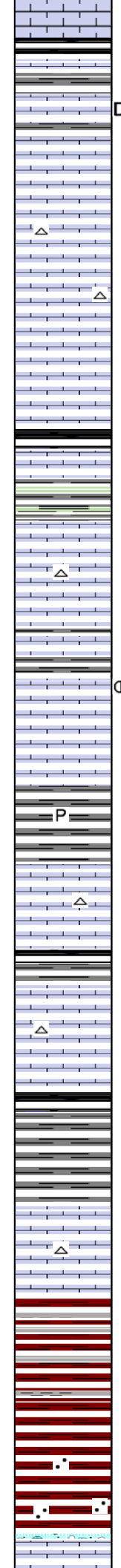
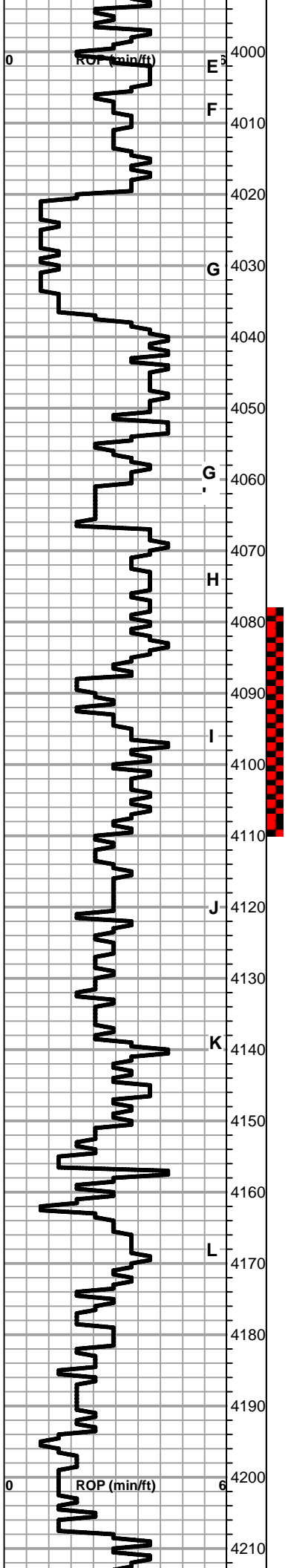
MINERAL

- P Pyrite
- Sandy
- Varicolored chert
- △ Chert White

OTHER SYMBOLS

- DST
- DST Int
- DST alt
- Core

Curve Track #1 ROP (min/ft)	Depth Intervals Cored Interval DST Interval	DST	Lithology	Oil Show	Geological Descriptions	TG, C1 - C5
<p>1:240 Imperial</p>	<p>3840</p> <p>3850</p> <p>3860</p> <p>3870</p> <p>3880</p> <p>3890</p> <p>3900</p> <p>3910</p> <p>3920</p> <p>3930</p> <p>3940</p> <p>3950</p> <p>3960</p> <p>3970</p> <p>3980</p> <p>3990</p>				<p>BEGIN 1' DRILL TIME FROM 3600' TO RTD BEGIN 10' WET AND DRY SAMPLES FROM 3650' TO RTD</p> <p>ANHYDRITE SPL TOP 2218+427 ANHYDRITE SPL BASE 2259+386</p> <p>NOTE: RAN PDC BIT TO 3836'. DECISION TO START DRILL TIME AND WET AND DRY SAMPLES AT 3840'</p> <p><u>HEEBNER SHALE SPL 3886-1241</u> Shale, black carbonaceous, fissile, blocky Lime, lt grayish brn, vfxln</p> <p>Shale, brn, red, grayish green, soft blocky</p> <p><u>TORONTO SPL 3909-1264</u> Lime, crm, fnxln-granular, fossiliferous in part, slight chalk, NS, No Wet Cut</p> <p>Lime, lt-med brn, fnxln, slightly fossiliferous Shale, lt red wash, soft mud</p> <p><u>LKC SPL 3929-1284</u> Lime, white-crm, fnxln-granular, slight chalk, slightly fossiliferous, NS, No Wet Cut, slight chalk</p> <p>Lime, crm-lt brn, fnxln-granular, NS</p> <p>Shale, red wash, soft-firm blocky</p> <p>Lime, crm, fnxln-granular, few oolitic w/fossil fragments, NS, No Wet Cut, slight bed chalk, chert-white to tan, sharp,</p> <p>Lime, crm-offwhite, fn-vfxln, NS, slight chalk in part</p> <p>Lime, lt brn, fn-micro xln, NS</p>	<p>1:240 Imperial</p> <p>8 5/8" SURFACE CASING SET TO 226' W/ 175 SXS COMMON 2%GEL, 3%CC</p>



4000 Shale, gray-black carbonaceous, soft blocky

4010 Lime, white-cream, fossiliferous w interfossil porosity mixed with fine oolitic material, dead immobile oil, no odor

4020 Lime, cream, fine v-fine limestone-micro limestone in part, slight bed chalk

4030 Lime, cream-lt brown, granular, chalky white wash with sticky clumps of chalk in part, NS, No Wet Cut

4040 Lime, cream, fine limestone, slight chalk

4050 Shale, gray-black carbonaceous
Lime, med-dark brown, v-fine limestone, hard on crush

4060 Shale, lime green, soft forming sticky clumps

4070 Lime, lt-med brown, fine-micro limestone, no visible porosity, slight bed chalk, slightly fossiliferous

4080 Lime, cream-lt brown, fine-micro limestone, slight bed chalk

4090 Lime, lt-med brown, granular w/ fine oolitic material and fossil fragments, scattered to saturated staining, fine inter limestone porosity with scattered fine pinpoint vugs, v lt odor w/ few small specks of free oil

4100 Shale, med gray, soft blocky, lots of pyrite clusters

4110 Lime, lt-med brown, fine-v-fine limestone, thin beds w micro fossils, well cemented, NS

4120 Shale, gray-black carbonaceous, soft blocky

4130 Lime, lt gray, fine limestone, soft on crush with yellowish gold stain in part, grades into v-fine limestone, hard lime

4140 Shale, gray-black carbonaceous, soft blocky

4150 Shale, gray-dark chocolate, soft blocky

4160 Lime, lt brown, fine limestone, slight chalk

BKC SPL 4175-1530

4180 Shale, lt red wash mixed with dove gray shale forming soft sticky clumps

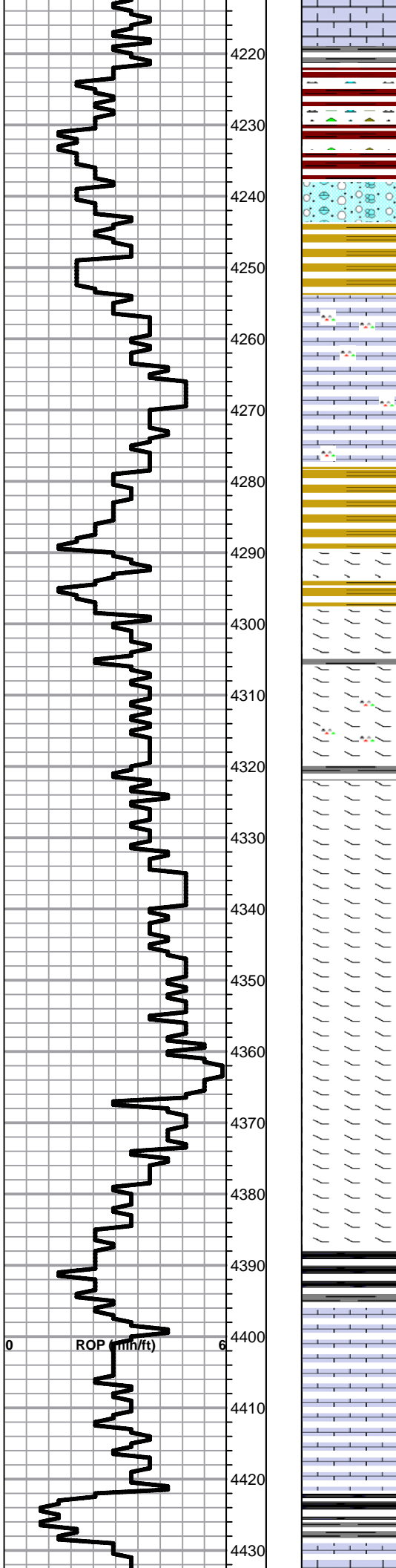
4190 Shale, reddish brown, soft blocky

4200 Shale, reddish brown, increasing sand content, NS

MARMATON SPL 4208-1563

4210 Lime, lt gray v-fine limestone, hard on crush

DST # 1 4078' TO 4110' SEE
HEADER FOR TEST
SUMMARY



Lime, lt gray, vfxln, hard on crush

Shale, lt gray, soft-firm blocky

Shale, deep red wash, vari color chert

Lime, clastic mix with red shale staining

Shale, redds, brns, grays, soft blocky

Lime, tan-lt gray, granular-fnxln w fresh orange chert

Lime, tan-lt gray, granular-fnxln, dolomitic in part , hard on crush

Shale, vari colored, soft - firm blocky and slivers

Lime, yellow with gold stain, fossiliferous and well cemented, vfxln-micro xln, hard on crush

Lime, lt gray, vfxln, dolomitic, some reworked material in part

Lime, lt gray, fn-micro xln, orange chert, fresh, sharp

PAWNEE SPL 4322-1677

Lime, lt-med gray, fnxln, dolomitic

Lime, lt-med gray, fn-vfxln, hard on crush, dolomitic

Lime, med gray, fn-vfxln, dolomitic, hard on crush

Lime, lt-dark gray, fn-vfxln, increasing black shale content, dolomitic, hard on crush

Lime, med-dark gray, dolomitic, hard on crush

Lime, drak gray-black, dolomitic, increasing black shale content near facies boundary

Shale, black carbonaceous, fissile, blocky

FORT SCOTT SPL 4396-1751

Lime, lt grayish brn, mostly fnxln, few chips with scattered fine pinpt porosity with trace of spotty stain, NFO, No Odor, scattered sparry calcite backfill in part

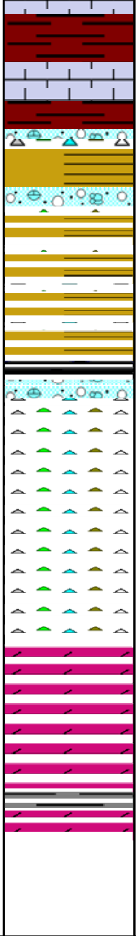
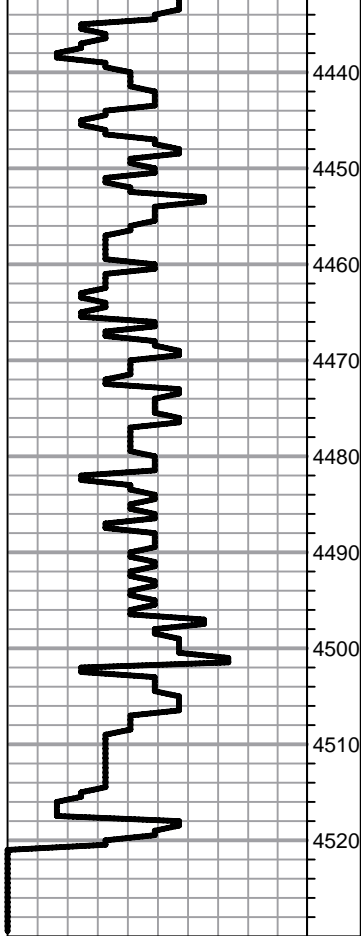
Lime, crm-lt brn, fnxln, slight chalk, NS

Lime, . med brn, fn-vfxln

CHEROKEE SHALE SPL 4421-1776

Shale, black carbonaceous, fissile, blocky

Lime, lt brn, vf-micro xln, hard on crush



Shale, dark reddish brn, soft blocky

Lime, crm-lt brn, fn-vfxln-micro xln, hard on crush, few crinoid fragments

Shale, vari colored with increasing content of vari colored cherts

Shale, vari colored with vari colored cherts , firm, waxy in part

Clastic mix of vari colored cherts, sandstone and vari colored shale, NS

Chert, vari color in vari color shales, NS

Chert, vari color mixed with vari color shale, waxy in part

Chert, vari color mixed with vari color shales, NS, No Odor

MISSISSIPPI SPL 4500-1855

Dolomite, crm, granular, fine grained, NS No Stain

Doloite, AA NS

NO TRACE OF GILSONITE OR ASPHALTS NOTED IN THIS INTERVAL OR THE UNDERLYING MISSISSIPPI DOLOMITE