

# Pro-Stake LLC

Oil Field & Construction Site Staking

P.O. Box 2324

Garden City, Kansas 67846

Office/Fax: (620) 276-6159

Cell: (620) 272-1499

052622bar

PLAT NO.

10788

INVOICE NO.

Ritchie Exploration, Inc.

OPERATOR

#1 Imel 8AD-Nau

LEASE NAME

Ford County, KS

COUNTY

20S

Reg.

8

Twp.

26S

Sec.

22W

Reg.

SCALE: 1" = 1000'

DATE STAKED: Mar. 28<sup>th</sup>, 2013

MEASURED BY: Ben R.

DRAWN BY: Drew H.

AUTHORIZED BY: Justin C.

Main loc. = 335°FNL-2560°FEL = 2427.3' gr. elev.  
 Alt. #1 = 335°FNL-2510°FEL = 2427.2' gr. elev.

LOCATION SPOT

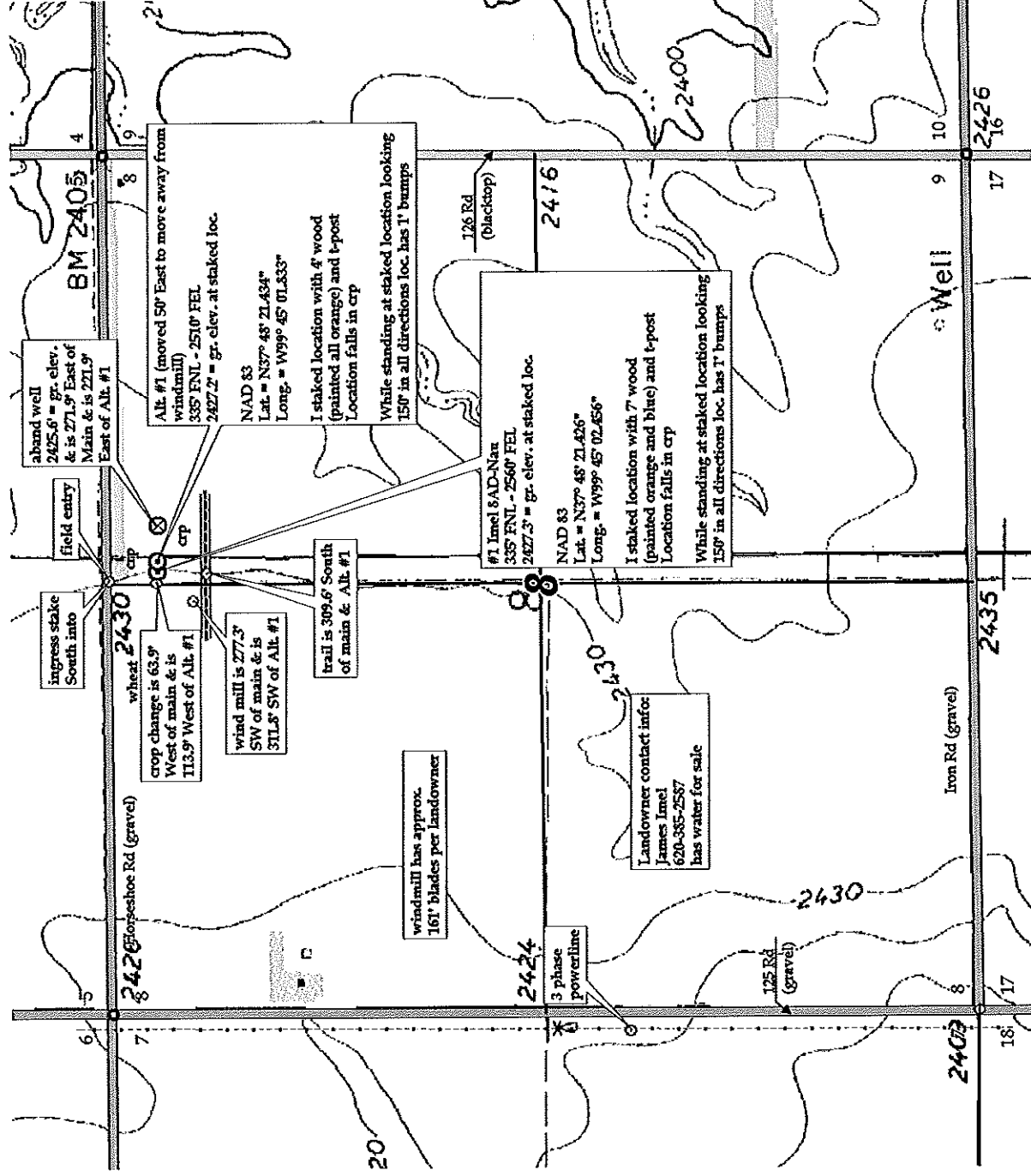


**Directions:** From the NW side of Spearville, Ks at the intersections of Hwy 50 & Mains St. SE & Lake RD NW - Now go 0.4 mile SE on Main St. - Now go 0.1 mile East on Davis St. - Now go 1.5 miles South on S. Stafford St/Ford-Spearville RD - Now go 0.6 mile East on Ford-Spearville RD/Correction line RD - Now go 1.2 mile South on 126 Rd to the NE corner of section 8-26S-22W - Now go 0.5 mile West on Horseshoe Rd to ingress stake South into - Now go 335° South through crp into staked location.

**Final ingress must be verified with land owner or Operator.**

*This drawing does not constitute a monumented survey or a land survey plat.*

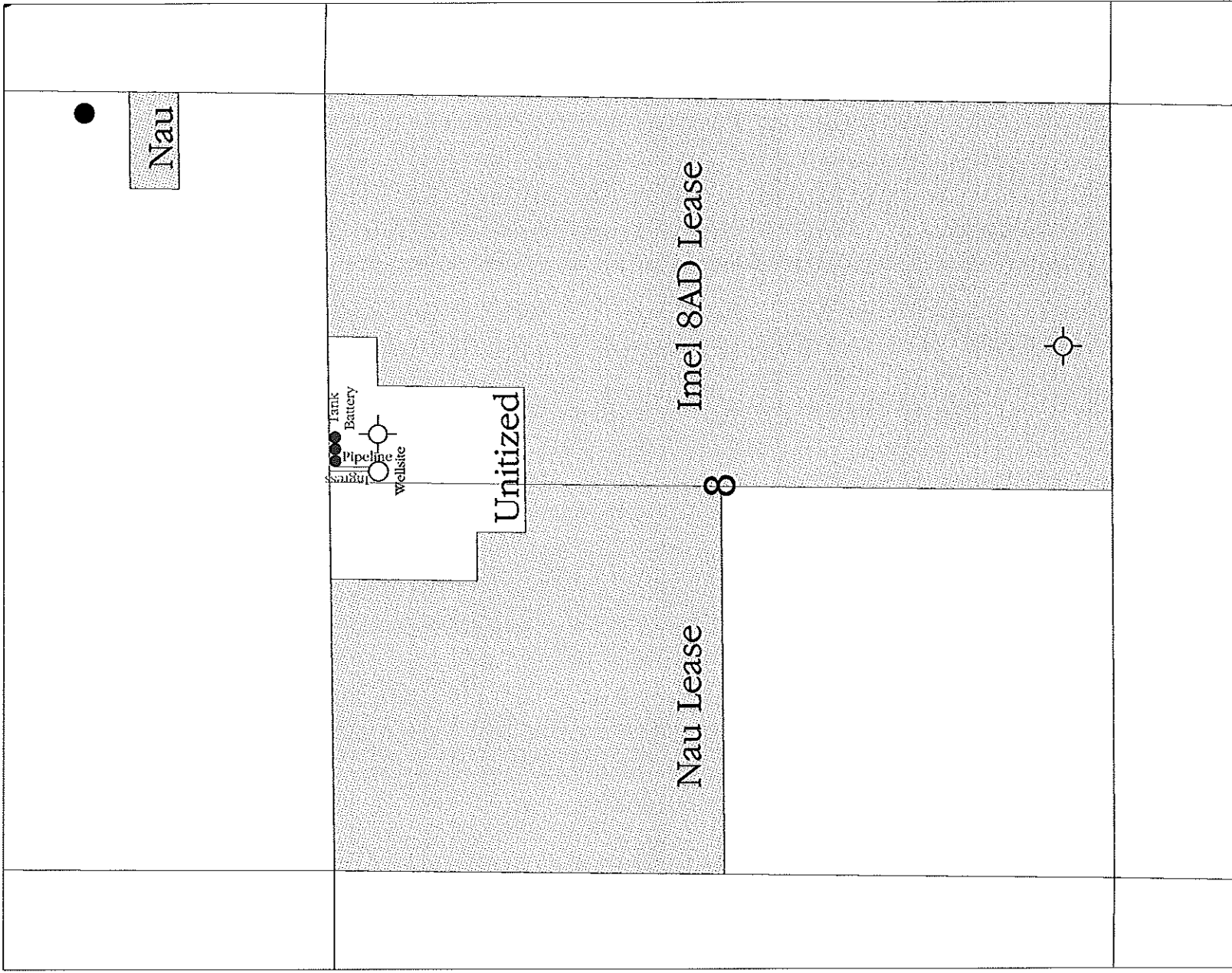
*This drawing is for construction purposes only.*



KANSAS SURFACE OWNER NOTIFICATION ACT

R 22 W

T  
26  
S



SCALE = 1 : 12,000

FORD COUNTY, KANSAS