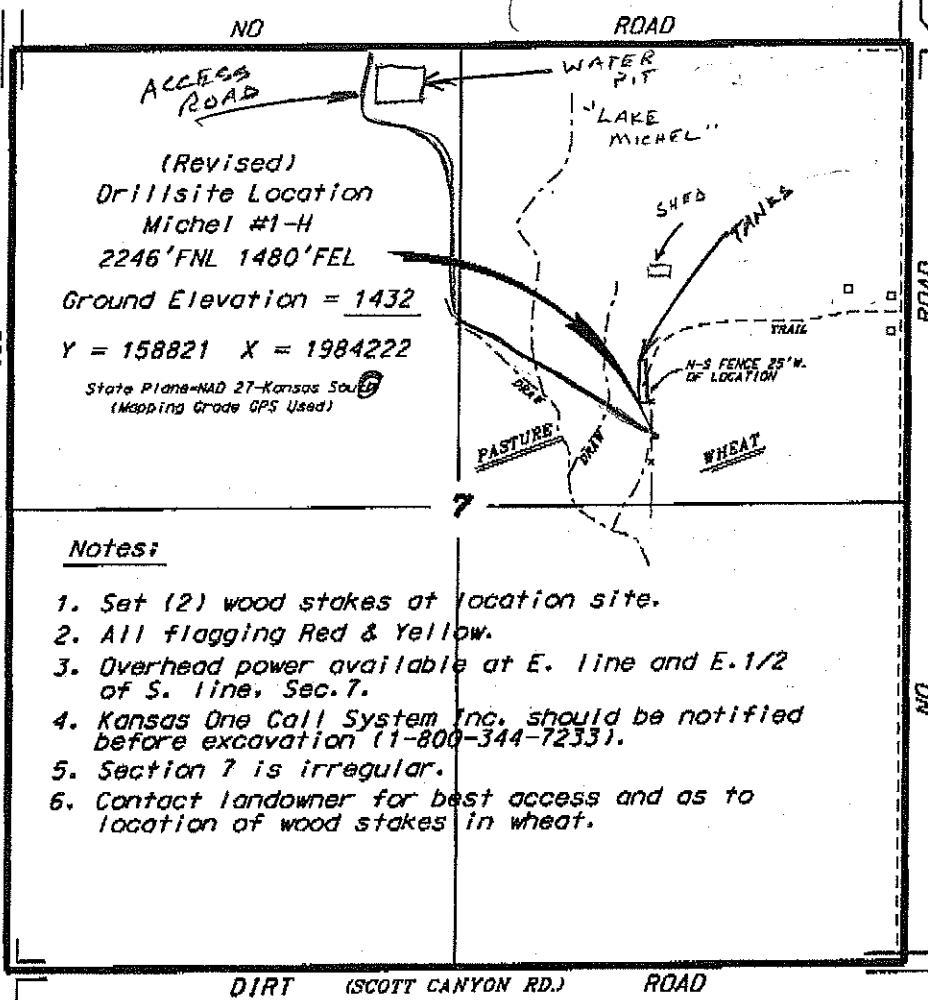


MOOLSEY OPERATING COMPANY, LLC
MICHEL LEASE
NE. 1/4, SECTION 7, T34S, R11W
BARBER COUNTY, KANSAS



Notes:

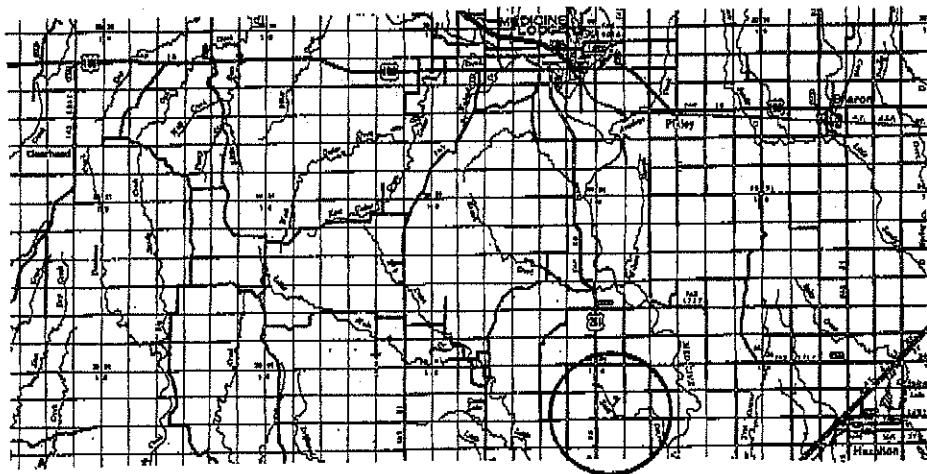
1. Set (2) wood stakes at location site.
2. All flagging Red & Yellow.
3. Overhead power available at E. line and E. 1/2 of S. line, Sec. 7.
4. Kansas One Call System Inc. should be notified before excavation (1-800-344-7233).
5. Section 7 is irregular.
6. Contact landowner for best access and as to location of wood stakes in wheat.

*Ingress and egress to location as shown on this plat is per usage only and may not be legally opened for public use. Contact landowner, tenant and county road department for access.

281

HIGHWAY

SCALE 1" = 1000'



Controlling data is based upon the best maps and photographs available to us and upon a regular section of land containing 640 acres.

Approximate section lines were determined using the normal standard of care of oilfield surveyors practicing in the state of Kansas. The section corners, when established on the precise section lines, were not necessarily located, and the exact location of the drillsite location in the section is not guaranteed. Therefore, the operator seeking this service and accepting this plat and all other parties relying thereon agree to hold Central Kansas Oilfield Services, Inc., its officers and employees harmless from all losses, costs and expenses and sold warranties released from any liability from the Center of consecutive/lot spaces.

Elevations derived from National Geodetic Vertical Datum.

Date April 5, 2013

CENTRAL KANSAS OILFIELD SERVICES, INC. (620)792-1977