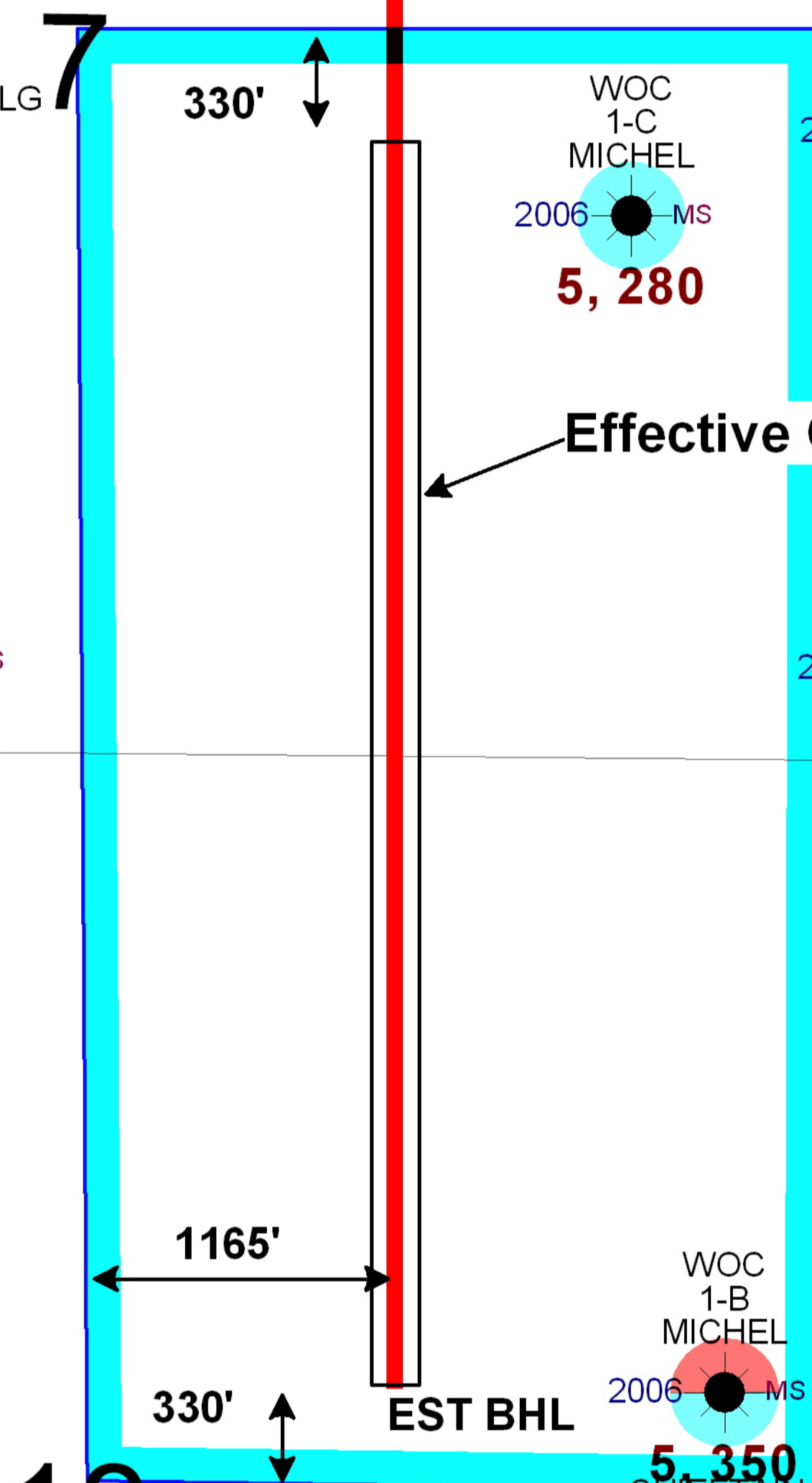


WOOLSEY OPERATING COMPANY
MICHEL #1-H
 SHL: 2246' FNL, 1480' FEL
 7-T34S-R11W
 EST BHL: 2310' FNL, 1480' FEL
 18-T34S-R11W
 Barber County, KS

Horizontal Drilling Unit Consists of WOC Operated Leases in the NE/4 of Section 18 & the SE/4 of Section 17-34s-11w.



Michel #1-H
Horizontal Drilling Unit

MCGINNESS
2 OWWO
LCC
2001 MS
4,931

WOC
1-C
DIEL
2008 MS
5,240

K&E
1
HUPBACH
1970 MS
4,700

WOODMAN
1
ZIMMERMAN
1961 MS
4,733

WOC
2-A
MICHEL GU
2008 MS
5,221

NICHOLS DRLG
1-7
MICHEL
1969 MS
4,800

WOC
1-D
MICHEL
2007 MS
5,230

HENDRICK
1
NISI
1965 MS

WOC
1-A
MICHEL
2006 MS
5,290

WOC
1-H
MICHEL
MS

FRANCIS
1-B
ZIMMERMAN
1957 MS
4,733

WOC
1-C
MICHEL
2006 MS
5,280

WOC
1-B
MICHEL
2006 MS
5,350

SMITHERMAN
1
GROENDYKE
1959 MS
4,620

CHIEFTAIN
3
MICHEL
2008 MS
5,212

CHIEFTAIN
4
MICHEL
2009 MS
5,215

WOC
1-B
MICHEL
2006 MS
5,318

CHIEFTAIN
3-18
DOUGLAS-KENT
2011 MS
5,318

WOC
3
SUMMERS
2011 CK MS
5,190

WOC
4
SUMMERS
2011 MS
5,220

WOC
2-A GU
WILEY TRUST
2010 MS
4,850

WOC
2-B GU
MICHEL
2011 CK, MS
5,180

WOC
3
SUMMERS
2011 CK MS
5,190

WOC
2
SUMMERS
2010 MS
4,852

INDIAN
1-8
MICHEL
1969 MS
4,656

CHIEFTAIN
2
MICHEL
2008 MS
5,159

WOC
2
WILEY TRUST
2010 MS
4,860

WOC
1
WILEY TRUST
2006 CKMS
5,310

WOC
1
SUMMERS
2005 CK-MS
5,350

WOC
2
SUMMERS
2010 MS
4,852

WOC
3-A GU
WILEY TR
2011 MS
5,093

WO
1-E
WILEY T
2007 MS
5,110

Woolsey Operating Company

MICHEL #1-H
KCC LOCATION EXHIBIT
 7-34s-11w,
 Barber County, KS

- ATTRIBUTE MAP**
- CS: CHASE
 - CG: COUNCIL GROVE
 - AD: ADMIRE
 - WB: WABAUNSEE
 - SH: SHAWNEE
 - DG: DOUGLAS
 - KC: LANSING-KANSAS CITY
 - PL: PLEASANTON
 - MA: MARMATON
 - CK: CHEROKEE
 - AT: ATOKA
 - MW: MORROW
 - CN: MISS CONG.
 - MS: MISSISSIPPI
 - KH: KINDERHOOK
 - MN: MISENER
 - WF: WOODFORD SH.
 - VI: VIOLA
 - SP: SIMPSON
 - AR: ARBUCKLE
 - GW: GRANITE WASH

REMARKS
 CONFIDENTIAL

By: DLP