



DRILL STEM TEST REPORT

Prepared For: **Prospect Oil & Gas Corp.**

PO Box 837
Russell KS 67665 - 0837

ATTN: Brad Hutchinson

Ottley #1

16-13s-30w Gove,KS

Start Date: 2013.03.12 @ 22:50:00

End Date: 2013.03.13 @ 04:19:45

Job Ticket #: 49962 DST #: 1

Trilobite Testing, Inc
PO Box 362 Hays, KS 67601
ph: 785-625-4778 fax: 785-625-5620

Printed: 2013.03.21 @ 09:52:34



**TRILOBITE
TESTING, INC.**

DRILL STEM TEST REPORT

Prospect Oil & Gas Corp.

16-13s-30w Gove, KS

PO Box 837
Russell KS 67665 - 0837

Ottley #1

Job Ticket: 49962

DST#: 1

ATTN: Brad Hutchinson

Test Start: 2013.03.12 @ 22:50:00

GENERAL INFORMATION:

Formation: **Topeka**

Deviated: No Whipstock: ft (KB)

Time Tool Opened: 00:30:00

Time Test Ended: 04:19:45

Test Type: Conventional Bottom Hole (Initial)

Tester: Jace McKinney

Unit No: 46

Interval: 3770.00 ft (KB) To 3850.00 ft (KB) (TVD)

Reference Elevations: 2900.00 ft (KB)

Total Depth: 3850.00 ft (KB) (TVD)

2893.00 ft (CF)

Hole Diameter: 7.88 inches Hole Condition: Fair

KB to GR/CF: 7.00 ft

Serial #: 8675

Inside

Press @ Run Depth: 264.81 psig @ 3771.00 ft (KB)

Capacity: 8000.00 psig

Start Date: 2013.03.12

End Date:

2013.03.13

Last Calib.: 2013.03.13

Start Time: 22:50:15

End Time:

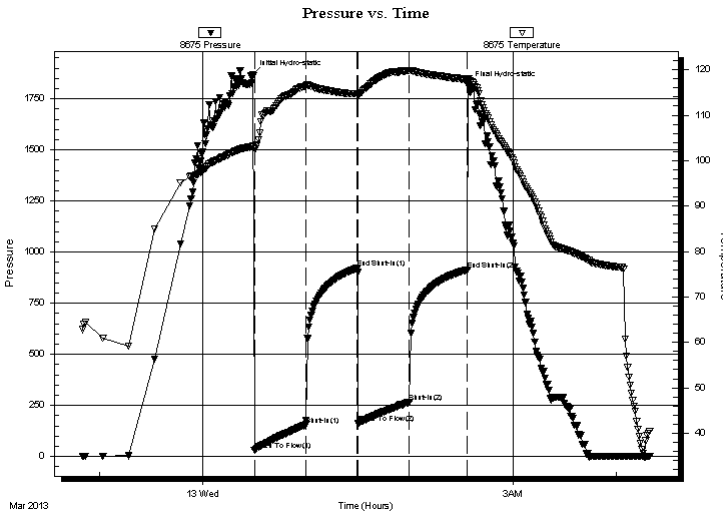
04:19:45

Time On Btm: 2013.03.13 @ 00:29:00

Time Off Btm: 2013.03.13 @ 02:34:15

TEST COMMENT: B.O.B. in 9 min.
Bled off for 5 min. No return blow
B.O.B. in 11 min.
Bled off for 5 min. No return blow

PRESSURE SUMMARY



Time (Min.)	Pressure (psig)	Temp (deg F)	Annotation
0	1870.17	103.15	Initial Hydro-static
1	32.15	102.61	Open To Flow (1)
31	154.93	116.39	Shut-In(1)
61	921.73	114.65	End Shut-In(1)
62	162.11	114.37	Open To Flow (2)
91	264.81	119.77	Shut-In(2)
125	914.44	117.74	End Shut-In(2)
126	1815.40	118.07	Final Hydro-static

Recovery

Length (ft)	Description	Volume (bbl)
137.00	mcw 50%M 50%W	1.92
378.00	mcw 20%M 80%W	5.30

Gas Rates

	Choke (inches)	Pressure (psig)	Gas Rate (Mcf/d)



**TRILOBITE
TESTING, INC.**

DRILL STEM TEST REPORT

TOOL DIAGRAM

Prospect Oil & Gas Corp.

16-13s-30w Gove,KS

PO Box 837
Russell KS 67665 - 0837

Ottley #1

Job Ticket: 49962

DST#: 1

ATTN: Brad Hutchinson

Test Start: 2013.03.12 @ 22:50:00

Tool Information

Drill Pipe:	Length: 3773.73 ft	Diameter: 3.80 inches	Volume: 52.94 bbl	Tool Weight: 2500.00 lb
Heavy Wt. Pipe:	Length: 0.00 ft	Diameter: 0.00 inches	Volume: 0.00 bbl	Weight set on Packer: 25000.00 lb
Drill Collar:	Length: 0.00 ft	Diameter: 0.00 inches	Volume: 0.00 bbl	Weight to Pull Loose: 56000.00 lb
			Total Volume: 52.94 bbl	Tool Chased 0.00 ft
Drill Pipe Above KB:	31.23 ft			String Weight: Initial 60000.00 lb
Depth to Top Packer:	3770.00 ft			Final 70000.00 lb
Depth to Bottom Packer:	ft			
Interval between Packers:	80.00 ft			
Tool Length:	107.50 ft			
Number of Packers:	2	Diameter: 6.75 inches		

Tool Comments:

Tool Description

Tool Description	Length (ft)	Serial No.	Position	Depth (ft)	Accum. Lengths
Change Over Sub	1.00			3743.50	
Shut In Tool	5.00			3748.50	
Hydraulic tool	5.00			3753.50	
Jars	5.00			3758.50	
Safety Joint	2.50			3761.00	
Packer	5.00			3766.00	27.50 Bottom Of Top Packer
Packer	4.00			3770.00	
Stubb	1.00			3771.00	
Recorder	0.00	8675	Inside	3771.00	
Recorder	0.00	8650	Outside	3771.00	
Perforations	10.00			3781.00	
Change Over Sub	1.00			3782.00	
Drill Pipe	64.00			3846.00	
Change Over Sub	1.00			3847.00	
Bullnose	3.00			3850.00	80.00 Bottom Packers & Anchor

Total Tool Length: 107.50



**TRILOBITE
TESTING, INC.**

DRILL STEM TEST REPORT

FLUID SUMMARY

Prospect Oil & Gas Corp.

16-13s-30w Gove,KS

PO Box 837
Russell KS 67665 - 0837

Ottley #1

Job Ticket: 49962

DST#: 1

ATTN: Brad Hutchinson

Test Start: 2013.03.12 @ 22:50:00

Mud and Cushion Information

Mud Type: Gel Chem

Cushion Type:

Oil API:

deg API

Mud Weight: 9.00 lb/gal

Cushion Length:

ft

Water Salinity:

ppm

Viscosity: 51.00 sec/qt

Cushion Volume:

bbbl

Water Loss: 5.98 in³

Gas Cushion Type:

Resistivity: ohm.m

Gas Cushion Pressure:

psig

Salinity: 600.00 ppm

Filter Cake: 1.00 inches

Recovery Information

Recovery Table

Length ft	Description	Volume bbl
137.00	mcw 50%M 50%W	1.922
378.00	mcw 20%M 80%W	5.302

Total Length: 515.00 ft Total Volume: 7.224 bbl

Num Fluid Samples: 0

Num Gas Bombs: 0

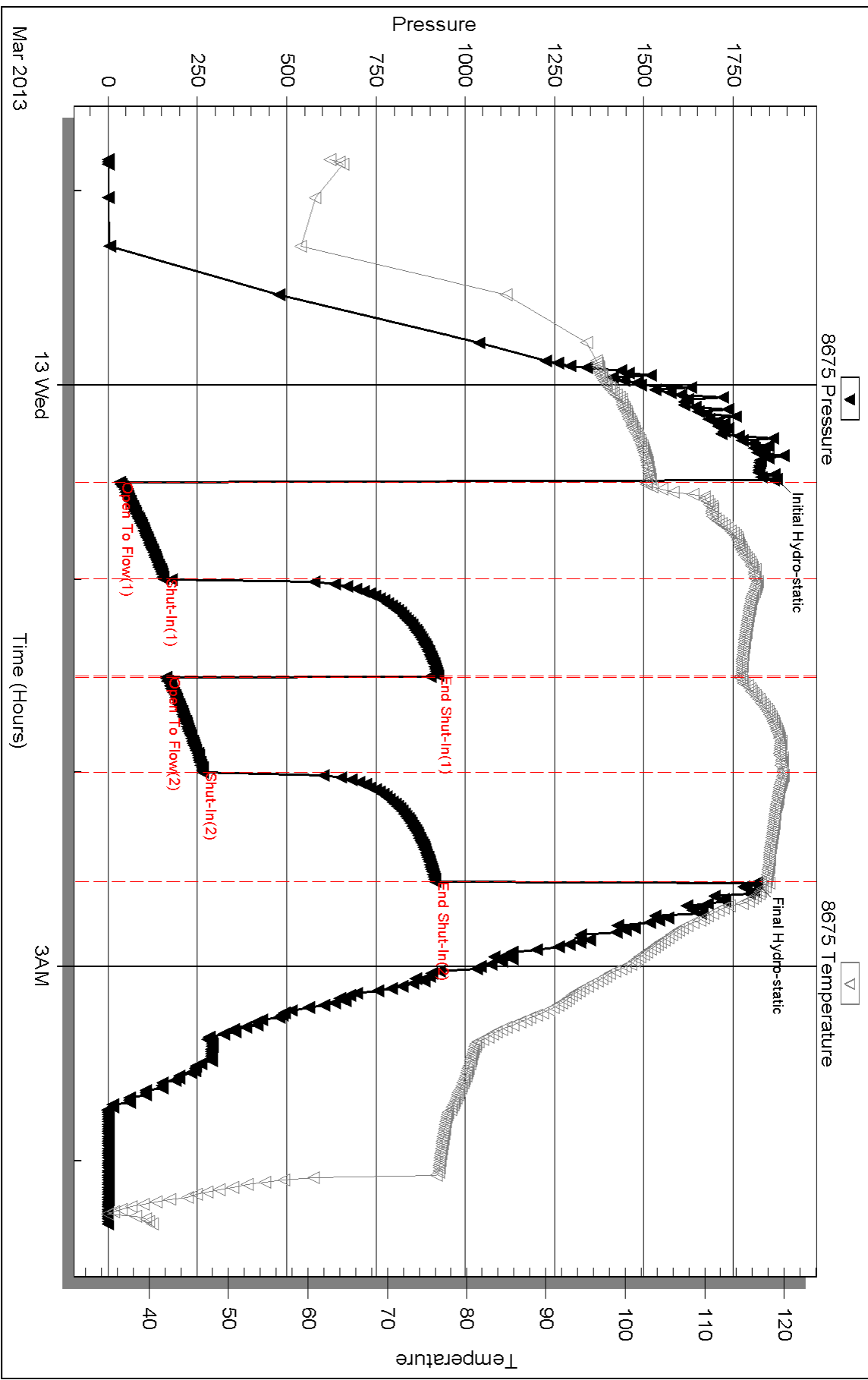
Serial #:

Laboratory Name:

Laboratory Location:

Recovery Comments: RW: .30 @ 30 F = 50,000

Pressure vs. Time

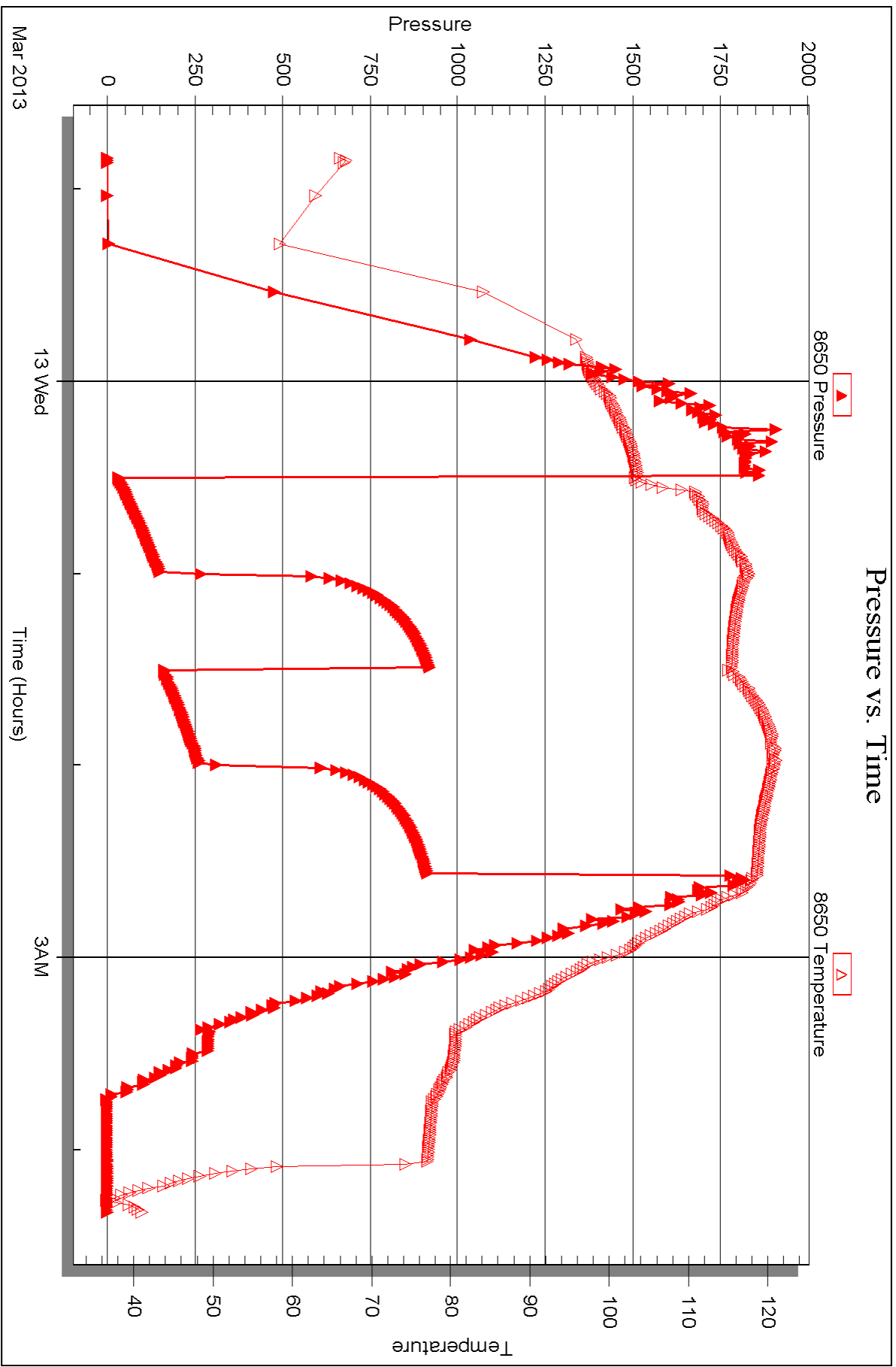


Serial #: 8650

Outside Prospect Oil & Gas Corp.

Oilley #1

DST Test Number: 1





DRILL STEM TEST REPORT

Prepared For: **Prospect Oil & Gas Corp.**

PO Box 837
Russell KS 67665 - 0837

ATTN: Brad Hutchinson

Ottley #1

16-13s-30w Gove,KS

Start Date: 2013.03.13 @ 13:00:00

End Date: 2013.03.13 @ 19:02:00

Job Ticket #: 49963 DST #: 2

Trilobite Testing, Inc
PO Box 362 Hays, KS 67601
ph: 785-625-4778 fax: 785-625-5620

Printed: 2013.03.21 @ 09:51:28



**TRILOBITE
TESTING, INC.**

DRILL STEM TEST REPORT

TOOL DIAGRAM

Prospect Oil & Gas Corp.

16-13s-30w Gove,KS

PO Box 837
Russell KS 67665 - 0837

Ottley #1

Job Ticket: 49963

DST#: 2

ATTN: Brad Hutchinson

Test Start: 2013.03.13 @ 13:00:00

Tool Information

Drill Pipe:	Length: 3900.64 ft	Diameter: 3.80 inches	Volume: 54.72 bbl	Tool Weight: 2500.00 lb
Heavy Wt. Pipe:	Length: 0.00 ft	Diameter: 0.00 inches	Volume: 0.00 bbl	Weight set on Packer: 25000.00 lb
Drill Collar:	Length: 0.00 ft	Diameter: 0.00 inches	Volume: 0.00 bbl	Weight to Pull Loose: 66000.00 lb
			<u>Total Volume: 54.72 bbl</u>	Tool Chased 0.00 ft
Drill Pipe Above KB:	33.14 ft			String Weight: Initial 56000.00 lb
Depth to Top Packer:	3895.00 ft			Final 56000.00 lb
Depth to Bottom Packer:	ft			
Interval between Packers:	33.00 ft			
Tool Length:	60.50 ft			
Number of Packers:	2	Diameter: 6.75 inches		

Tool Comments:

Tool Description

Length (ft) Serial No. Position Depth (ft) Accum. Lengths

Tool Description	Length (ft)	Serial No.	Position	Depth (ft)	Accum. Lengths
Change Over Sub	1.00			3868.50	
Shut In Tool	5.00			3873.50	
Hydraulic tool	5.00			3878.50	
Jars	5.00			3883.50	
Safety Joint	2.50			3886.00	
Packer	5.00			3891.00	27.50 Bottom Of Top Packer
Packer	4.00			3895.00	
Stubb	1.00			3896.00	
Recorder	0.00	8675	Inside	3896.00	
Recorder	0.00	8650	Outside	3896.00	
Perforations	29.00			3925.00	
Change Over Sub	0.00			3925.00	
Drill Pipe	0.00			3925.00	
Change Over Sub	0.00			3925.00	
Bullnose	3.00			3928.00	33.00 Bottom Packers & Anchor

Total Tool Length: 60.50



**TRILOBITE
TESTING, INC.**

DRILL STEM TEST REPORT

FLUID SUMMARY

Prospect Oil & Gas Corp.
PO Box 837
Russell KS 67665 - 0837
ATTN: Brad Hutchinson

16-13s-30w Gove,KS
Ottley #1
Job Ticket: 49963 **DST#: 2**
Test Start: 2013.03.13 @ 13:00:00

Mud and Cushion Information

Mud Type: Gel Chem	Cushion Type:	Oil API:	deg API
Mud Weight: 9.00 lb/gal	Cushion Length: ft	Water Salinity:	ppm
Viscosity: 56.00 sec/qt	Cushion Volume: bbl		
Water Loss: 6.78 in ³	Gas Cushion Type:		
Resistivity: ohm.m	Gas Cushion Pressure: psig		
Salinity: 2000.00 ppm			
Filter Cake: 1.00 inches			

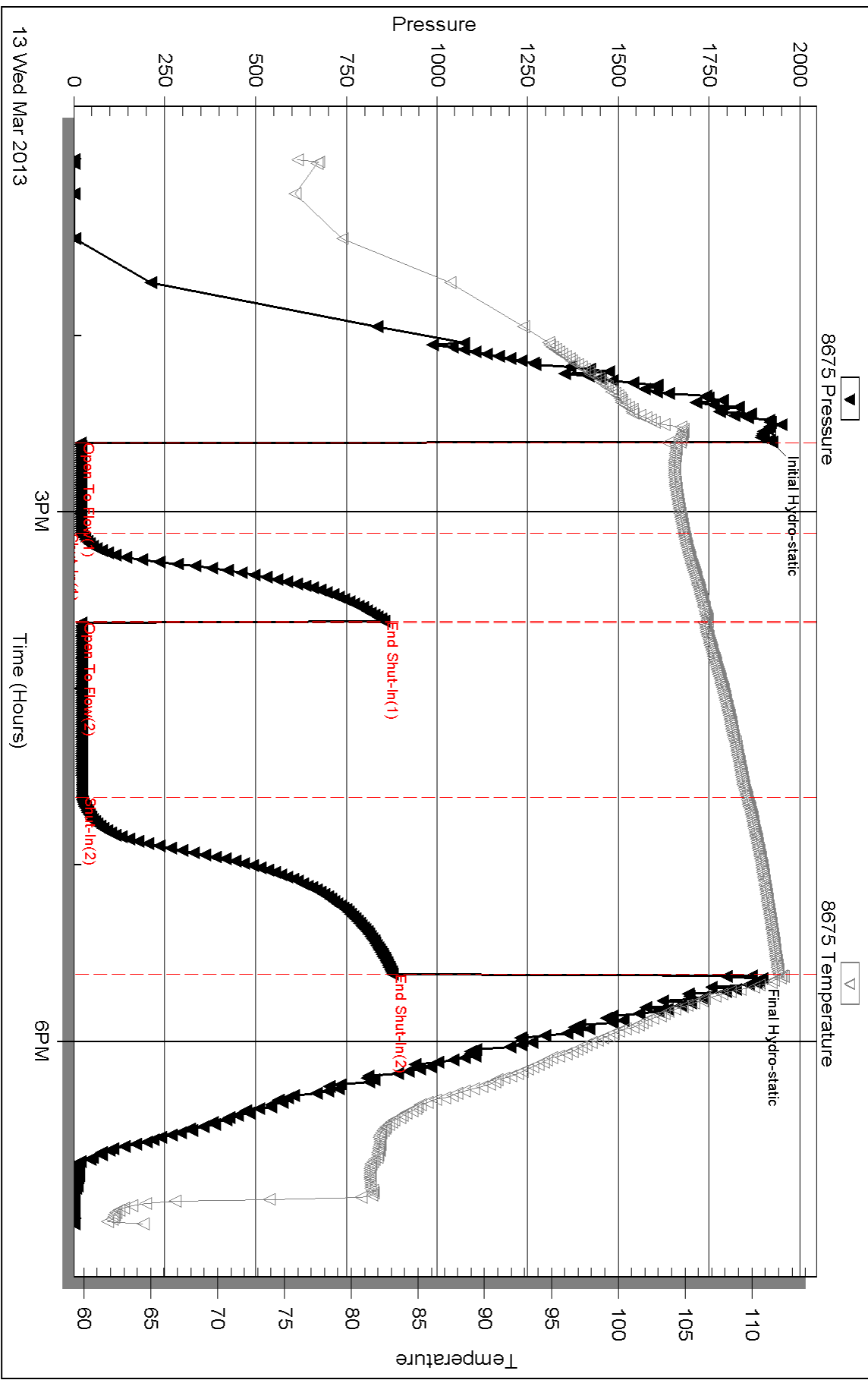
Recovery Information

Recovery Table

Length ft	Description	Volume bbl
15.00	100% Mud with oil scum	0.210

Total Length: 15.00 ft Total Volume: 0.210 bbl
Num Fluid Samples: 0 Num Gas Bombs: 0 Serial #:
Laboratory Name: Laboratory Location:
Recovery Comments:

Pressure vs. Time

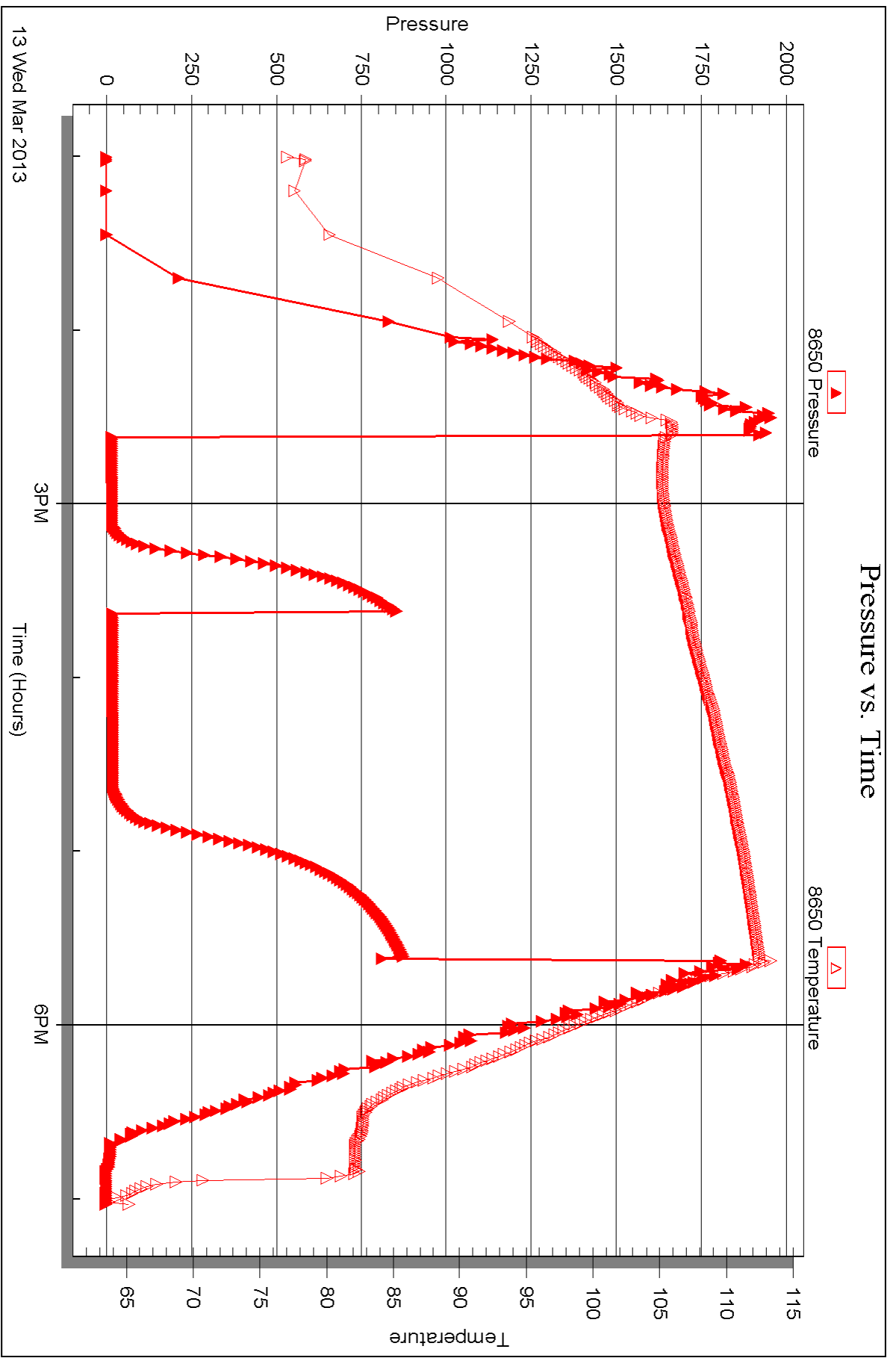


Serial #: 8650

Outside Prospect Oil & Gas Corp.

Oilley #1

DST Test Number: 2



13 Wed Mar 2013

Triobite Testing, Inc

Ref. No: 49963

Printed: 2013.03.21 @ 09:51:31



DRILL STEM TEST REPORT

Prepared For: **Prospect Oil & Gas Corp.**

PO Box 837
Russell KS 67665 - 0837

ATTN: Brad Hutchinson

Ottley #1

16-13s-30w Gove,KS

Start Date: 2013.03.14 @ 04:55:00

End Date: 2013.03.14 @ 10:01:30

Job Ticket #: 49964 DST #: 3

Trilobite Testing, Inc
PO Box 362 Hays, KS 67601
ph: 785-625-4778 fax: 785-625-5620

Printed: 2013.03.21 @ 09:50:35



TRILOBITE TESTING, INC.

DRILL STEM TEST REPORT

Prospect Oil & Gas Corp.

16-13s-30w Gove, KS

PO Box 837
Russell KS 67665 - 0837

Ottley #1

Job Ticket: 49964

DST#: 3

ATTN: Brad Hutchinson

Test Start: 2013.03.14 @ 04:55:00

GENERAL INFORMATION:

Formation: **Lansing " B & C "**

Deviated: No Whipstock: ft (KB)

Time Tool Opened: 06:32:30

Time Test Ended: 10:01:30

Test Type: Conventional Bottom Hole (Reset)

Tester: Jace McKinney

Unit No: 46

Interval: **3950.00 ft (KB) To 4000.00 ft (KB) (TVD)**

Reference Elevations: 2900.00 ft (KB)

Total Depth: 4000.00 ft (KB) (TVD)

2893.00 ft (CF)

Hole Diameter: 7.88 inches Hole Condition: Fair

KB to GR/CF: 7.00 ft

Serial #: 8675

Inside

Press @ Run Depth: 22.82 psig @ 3951.00 ft (KB)

Capacity: 8000.00 psig

Start Date: 2013.03.14

End Date: 2013.03.14

Last Calib.: 2013.03.14

Start Time: 04:55:15

End Time: 10:01:30

Time On Btm: 2013.03.14 @ 06:32:00

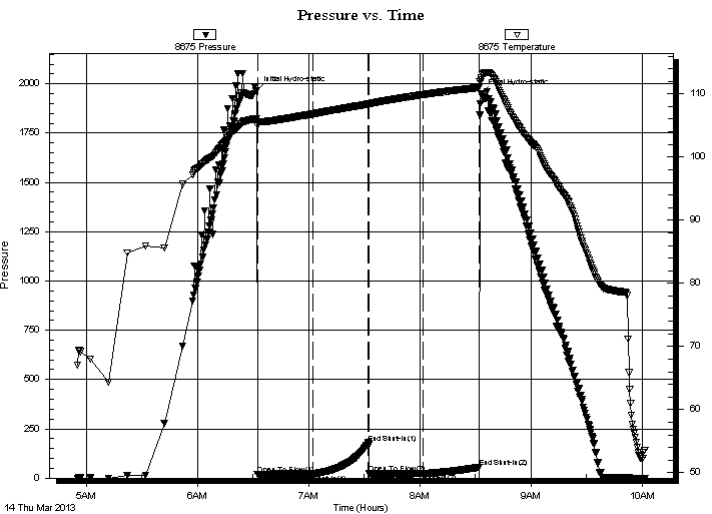
Time Off Btm: 2013.03.14 @ 08:33:00

TEST COMMENT: Built to 1/2" blow

No return blow

No blow

No return blow



PRESSURE SUMMARY

Time (Min.)	Pressure (psig)	Temp (deg F)	Annotation
0	1965.77	106.04	Initial Hydro-static
1	19.45	105.53	Open To Flow (1)
30	21.28	106.82	Shut-In(1)
60	178.66	108.38	End Shut-In(1)
61	21.95	108.34	Open To Flow (2)
90	22.82	109.89	Shut-In(2)
120	55.59	111.02	End Shut-In(2)
121	1950.27	112.29	Final Hydro-static

Recovery

Length (ft)	Description	Volume (bbl)
5.00	100% Mud w with few oil spots	0.07

* Recovery from multiple tests

Gas Rates

Choke (inches)	Pressure (psig)	Gas Rate (Mcf/d)



**TRILOBITE
TESTING, INC.**

DRILL STEM TEST REPORT

TOOL DIAGRAM

Prospect Oil & Gas Corp.

16-13s-30w Gove,KS

PO Box 837
Russell KS 67665 - 0837

Ottley #1

Job Ticket: 49964

DST#: 3

ATTN: Brad Hutchinson

Test Start: 2013.03.14 @ 04:55:00

Tool Information

Drill Pipe:	Length: 3932.80 ft	Diameter: 3.80 inches	Volume: 55.17 bbl	Tool Weight: 2500.00 lb
Heavy Wt. Pipe:	Length: 0.00 ft	Diameter: 0.00 inches	Volume: 0.00 bbl	Weight set on Packer: 25000.00 lb
Drill Collar:	Length: 0.00 ft	Diameter: 0.00 inches	Volume: 0.00 bbl	Weight to Pull Loose: 70000.00 lb
			<u>Total Volume: 55.17 bbl</u>	Tool Chased 0.00 ft
Drill Pipe Above KB:	10.30 ft			String Weight: Initial 60000.00 lb
Depth to Top Packer:	3950.00 ft			Final 60000.00 lb
Depth to Bottom Packer:	ft			
Interval between Packers:	50.00 ft			
Tool Length:	77.50 ft			
Number of Packers:	2	Diameter: 6.75 inches		

Tool Comments:

Tool Description	Length (ft)	Serial No.	Position	Depth (ft)	Accum. Lengths
------------------	-------------	------------	----------	------------	----------------

Change Over Sub	1.00			3923.50	
Shut In Tool	5.00			3928.50	
Hydraulic tool	5.00			3933.50	
Jars	5.00			3938.50	
Safety Joint	2.50			3941.00	
Packer	5.00			3946.00	27.50 Bottom Of Top Packer
Packer	4.00			3950.00	
Stubb	1.00			3951.00	
Recorder	0.00	8675	Inside	3951.00	
Recorder	0.00	8650	Outside	3951.00	
Perforations	13.00			3964.00	
Change Over Sub	1.00			3965.00	
Drill Pipe	31.00			3996.00	
Change Over Sub	1.00			3997.00	
Bullnose	3.00			4000.00	50.00 Bottom Packers & Anchor

Total Tool Length: 77.50



**TRILOBITE
TESTING, INC.**

DRILL STEM TEST REPORT

FLUID SUMMARY

Prospect Oil & Gas Corp.
PO Box 837
Russell KS 67665 - 0837
ATTN: Brad Hutchinson

16-13s-30w Gove,KS
Ottley #1
Job Ticket: 49964 **DST#: 3**
Test Start: 2013.03.14 @ 04:55:00

Mud and Cushion Information

Mud Type: Gel Chem	Cushion Type:	Oil API:	deg API
Mud Weight: 9.00 lb/gal	Cushion Length: ft	Water Salinity:	ppm
Viscosity: 53.00 sec/qt	Cushion Volume: bbl		
Water Loss: 6.78 in ³	Gas Cushion Type:		
Resistivity: ohm.m	Gas Cushion Pressure: psig		
Salinity: 2000.00 ppm			
Filter Cake: 1.00 inches			

Recovery Information

Recovery Table

Length ft	Description	Volume bbl
5.00	100% Mud with few oil spots	0.070

Total Length: 5.00 ft Total Volume: 0.070 bbl

Num Fluid Samples: 0 Num Gas Bombs: 0 Serial #:

Laboratory Name: Laboratory Location:

Recovery Comments:

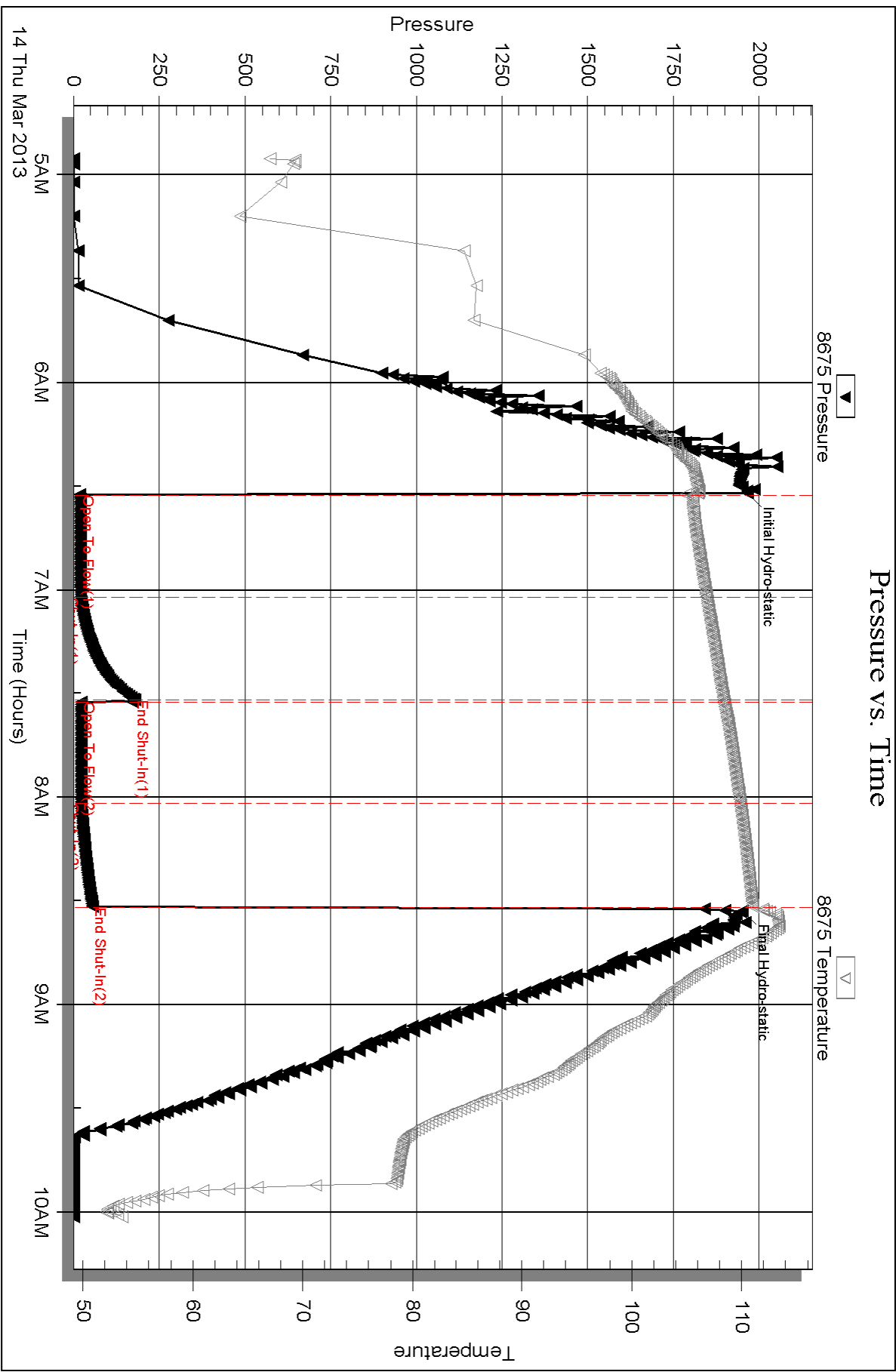
Serial #: 8675

Inside

Prospect Oil & Gas Corp.

Oilley #1

DST Test Number: 3

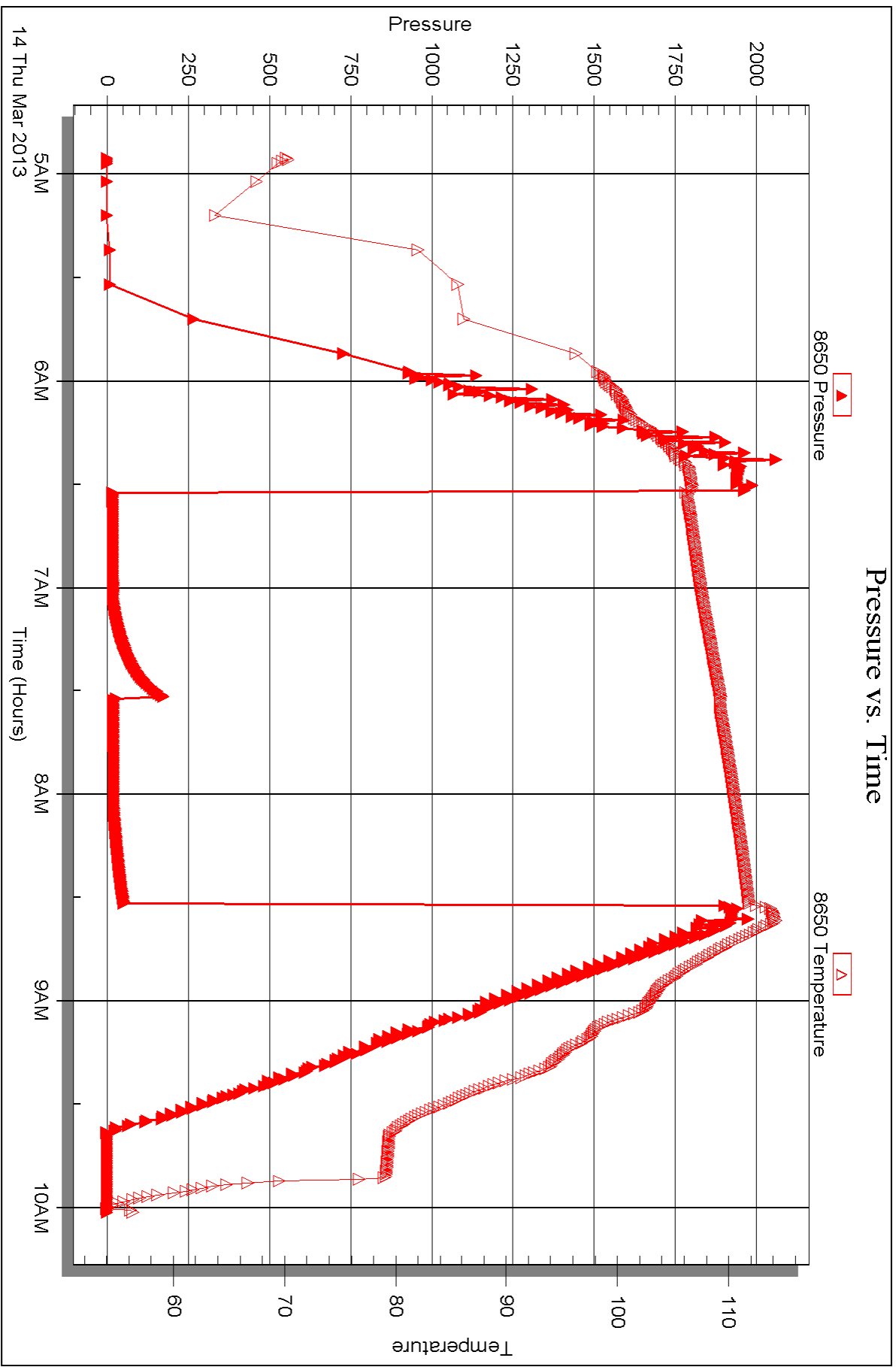


Serial #: 8650

Outside Prospect Oil & Gas Corp.

Oilley #1

DST Test Number: 3





DRILL STEM TEST REPORT

Prepared For: **Prospect Oil & Gas Corp.**

PO Box 837
Russell KS 67665 - 0837

ATTN: Brad Hutchinson

Ottley #1

16-13s-30w Gove,KS

Start Date: 2013.03.14 @ 17:30:00

End Date: 2013.03.14 @ 22:49:15

Job Ticket #: 49965 DST #: 4

Trilobite Testing, Inc
PO Box 362 Hays, KS 67601
ph: 785-625-4778 fax: 785-625-5620

Printed: 2013.03.21 @ 09:49:53



**TRILOBITE
TESTING, INC.**

DRILL STEM TEST REPORT

Prospect Oil & Gas Corp.
PO Box 837
Russell KS 67665 - 0837
ATTN: Brad Hutchinson

16-13s-30w Gove, KS

Ottley #1

Job Ticket: 49965

DST#: 4

Test Start: 2013.03.14 @ 17:30:00

GENERAL INFORMATION:

Formation: **Kansas City " EFG "**

Deviated: No Whipstock: ft (KB)

Time Tool Opened: 19:15:45

Time Test Ended: 22:49:15

Test Type: Conventional Bottom Hole (Reset)

Tester: Jace McKinney

Unit No: 46

Interval: **4000.00 ft (KB) To 4050.00 ft (KB) (TVD)**

Total Depth: 4050.00 ft (KB) (TVD)

Hole Diameter: 7.88 inches Hole Condition: Fair

Reference Elevations: 2900.00 ft (KB)

2893.00 ft (CF)

KB to GR/CF: 7.00 ft

Serial #: 8675

Inside

Press @ Run Depth: 25.27 psig @ 4001.00 ft (KB)

Start Date: 2013.03.14

End Date:

2013.03.14

Start Time: 17:30:15

End Time:

22:49:15

Capacity: 8000.00 psig

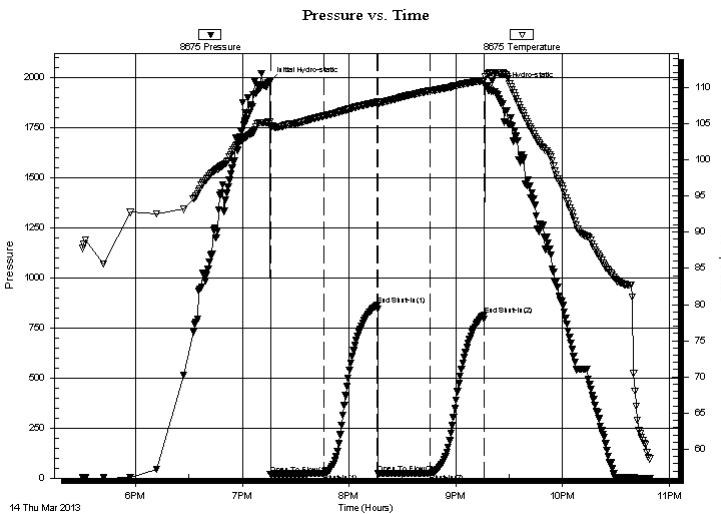
Last Calib.: 2013.03.14

Time On Btm: 2013.03.14 @ 19:15:30

Time Off Btm: 2013.03.14 @ 21:16:45

TEST COMMENT: Built to 3/4" blow
No return blow
Weak surface blow
No return blow

PRESSURE SUMMARY



Time (Min.)	Pressure (psig)	Temp (deg F)	Annotation
0	1979.53	105.19	Initial Hydro-static
1	19.30	104.48	Open To Flow (1)
31	22.93	106.04	Shut-In(1)
61	865.13	107.92	End Shut-In(1)
61	23.41	107.62	Open To Flow (2)
91	25.27	109.51	Shut-In(2)
121	816.19	110.96	End Shut-In(2)
122	1958.15	111.49	Final Hydro-static

Recovery

Length (ft)	Description	Volume (bbl)
10.00	100% Mud	0.14

* Recovery from multiple tests

Gas Rates

Choke (inches)	Pressure (psig)	Gas Rate (Mcf/d)



**TRILOBITE
TESTING, INC.**

DRILL STEM TEST REPORT

TOOL DIAGRAM

Prospect Oil & Gas Corp.

16-13s-30w Gove,KS

PO Box 837
Russell KS 67665 - 0837

Ottley #1

Job Ticket: 49965

DST#: 4

ATTN: Brad Hutchinson

Test Start: 2013.03.14 @ 17:30:00

Tool Information

Drill Pipe:	Length: 3996.25 ft	Diameter: 3.80 inches	Volume: 56.06 bbl	Tool Weight: 2500.00 lb
Heavy Wt. Pipe:	Length: 0.00 ft	Diameter: 0.00 inches	Volume: 0.00 bbl	Weight set on Packer: 25000.00 lb
Drill Collar:	Length: 0.00 ft	Diameter: 0.00 inches	Volume: 0.00 bbl	Weight to Pull Loose: 70000.00 lb
			<u>Total Volume: 56.06 bbl</u>	Tool Chased 0.00 ft
Drill Pipe Above KB:	23.75 ft			String Weight: Initial 60000.00 lb
Depth to Top Packer:	4000.00 ft			Final 60000.00 lb
Depth to Bottom Packer:	ft			
Interval between Packers:	50.00 ft			
Tool Length:	77.50 ft			
Number of Packers:	2	Diameter: 6.75 inches		

Tool Comments:

Tool Description

Length (ft) Serial No. Position Depth (ft) Accum. Lengths

Tool Description	Length (ft)	Serial No.	Position	Depth (ft)	Accum. Lengths
Change Over Sub	1.00			3973.50	
Shut In Tool	5.00			3978.50	
Hydraulic tool	5.00			3983.50	
Jars	5.00			3988.50	
Safety Joint	2.50			3991.00	
Packer	5.00			3996.00	27.50 Bottom Of Top Packer
Packer	4.00			4000.00	
Stubb	1.00			4001.00	
Recorder	0.00	8675	Inside	4001.00	
Recorder	0.00	8650	Outside	4001.00	
Perforations	13.00			4014.00	
Change Over Sub	1.00			4015.00	
Drill Pipe	31.00			4046.00	
Change Over Sub	1.00			4047.00	
Bullnose	3.00			4050.00	50.00 Bottom Packers & Anchor

Total Tool Length: 77.50



**TRILOBITE
TESTING, INC.**

DRILL STEM TEST REPORT

FLUID SUMMARY

Prospect Oil & Gas Corp.
PO Box 837
Russell KS 67665 - 0837
ATTN: Brad Hutchinson

16-13s-30w Gove,KS
Ottley #1
Job Ticket: 49965 **DST#: 4**
Test Start: 2013.03.14 @ 17:30:00

Mud and Cushion Information

Mud Type: Gel Chem	Cushion Type:	Oil API:	deg API
Mud Weight: 10.00 lb/gal	Cushion Length: ft	Water Salinity:	ppm
Viscosity: 44.00 sec/qt	Cushion Volume: bbl		
Water Loss: 5.99 in ³	Gas Cushion Type:		
Resistivity: ohm.m	Gas Cushion Pressure: psig		
Salinity: 1800.00 ppm			
Filter Cake: 1.00 inches			

Recovery Information

Recovery Table

Length ft	Description	Volume bbl
10.00	100% Mud	0.140

Total Length: 10.00 ft Total Volume: 0.140 bbl
 Num Fluid Samples: 0 Num Gas Bombs: 0 Serial #:
 Laboratory Name: Laboratory Location:
 Recovery Comments:

Serial #: 8675

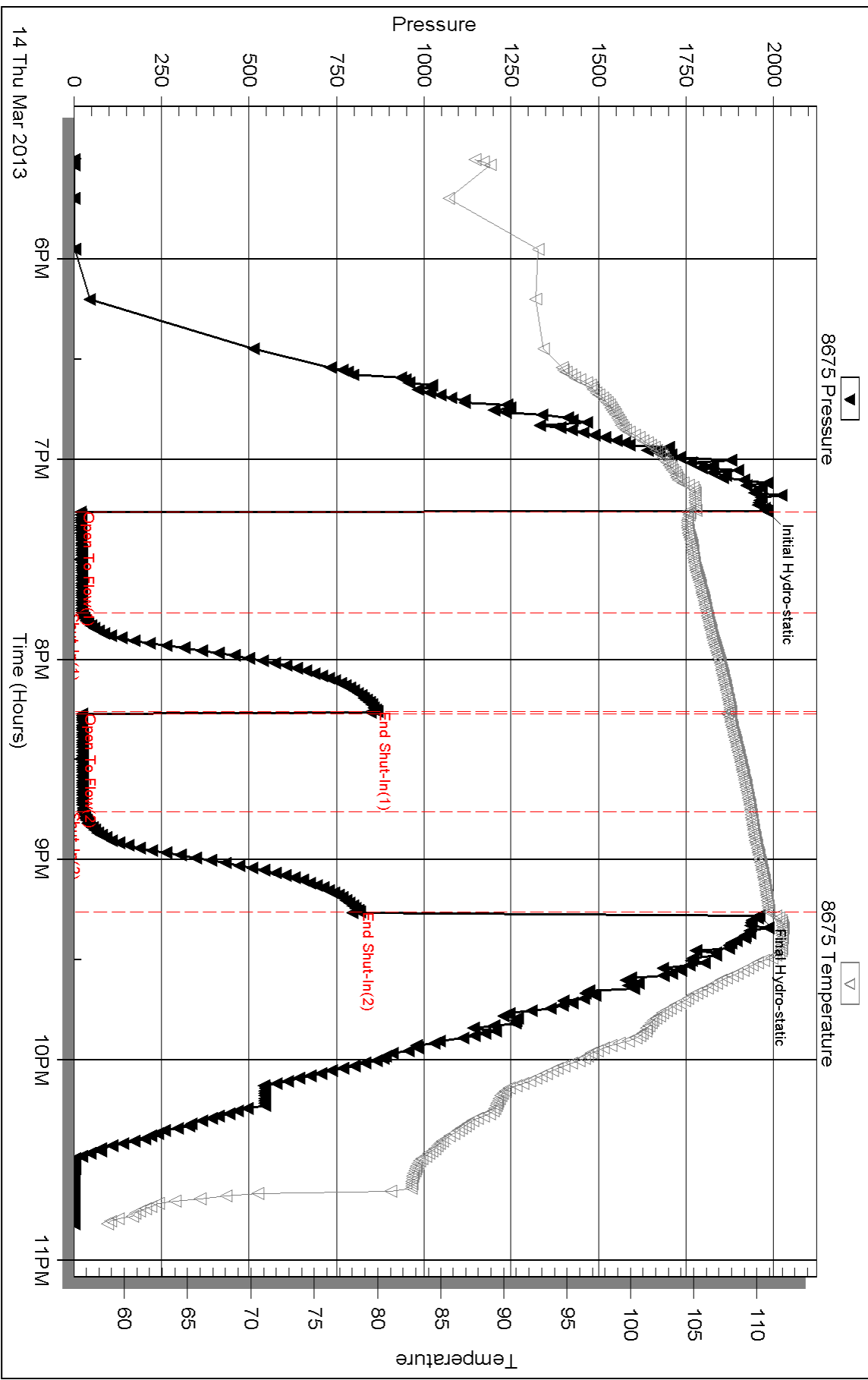
Inside

Prospect Oil & Gas Corp.

Oilkey #1

DST Test Number: 4

Pressure vs. Time



Triobite Testing, Inc

Ref. No: 49965

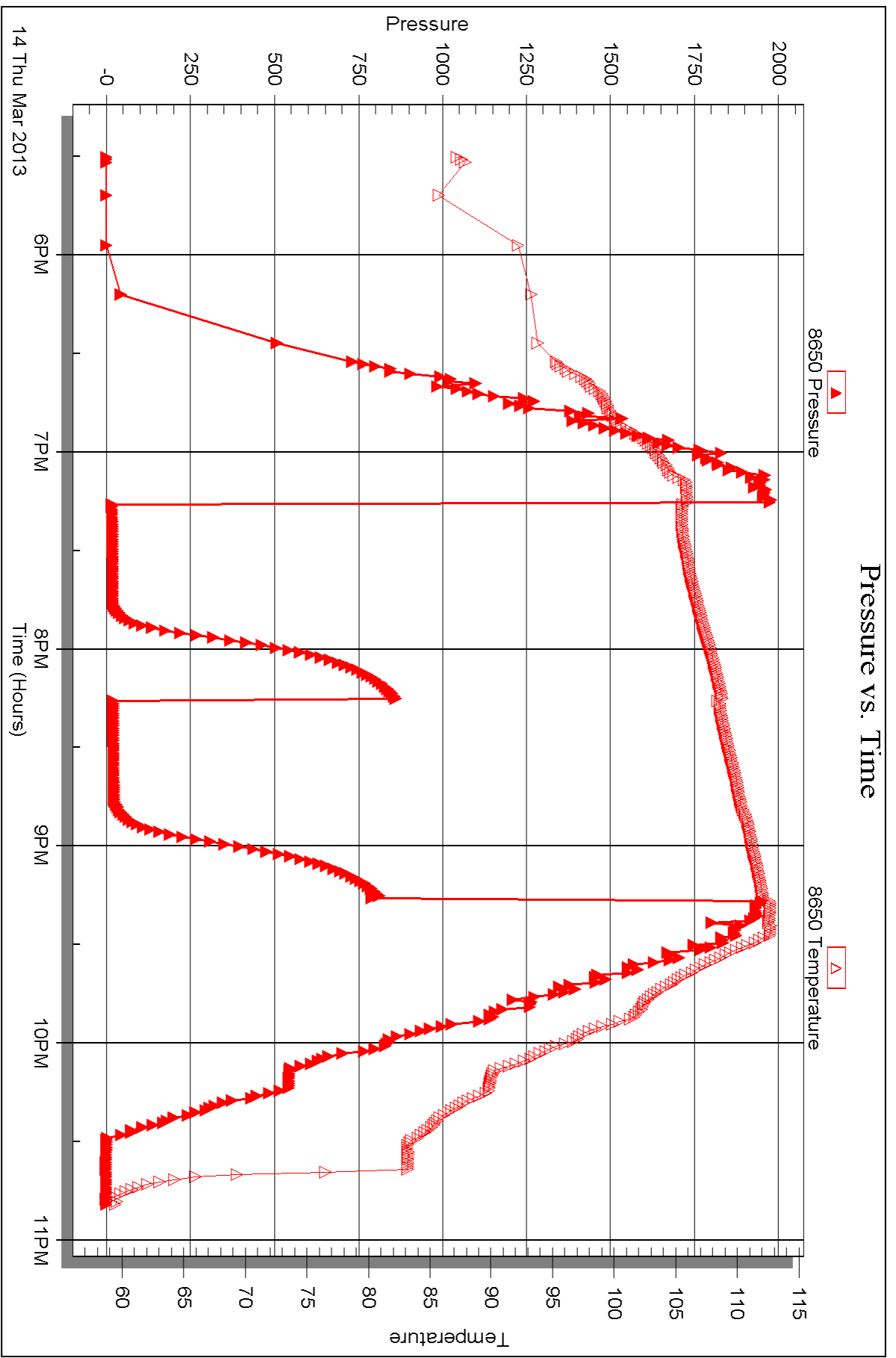
Printed: 2013.03.21 @ 09:49:56

Serial #: 8650

Outside Prospect Oil & Gas Corp.

Oilley #1

DST Test Number: 4





DRILL STEM TEST REPORT

Prepared For: **Prospect Oil & Gas Corp.**

PO Box 837
Russell KS 67665 - 0837

ATTN: Brad Hutchinson

Ottley #1

16-13s-30w Gove,KS

Start Date: 2013.03.15 @ 13:05:00

End Date: 2013.03.15 @ 21:22:45

Job Ticket #: 49966 DST #: 5

Trilobite Testing, Inc
PO Box 362 Hays, KS 67601
ph: 785-625-4778 fax: 785-625-5620

Printed: 2013.03.21 @ 09:49:15



**TRILOBITE
TESTING, INC.**

DRILL STEM TEST REPORT

Prospect Oil & Gas Corp.

16-13s-30w Gove,KS

PO Box 837
Russell KS 67665 - 0837

Ottley #1

Job Ticket: 49966

DST#: 5

ATTN: Brad Hutchinson

Test Start: 2013.03.15 @ 13:05:00

GENERAL INFORMATION:

Formation: **Kansas City " IJK "**

Deviated: No Whipstock: ft (KB)

Time Tool Opened: 14:48:00

Time Test Ended: 21:22:45

Test Type: Conventional Bottom Hole (Reset)

Tester: Jace McKinney

Unit No: 46

Interval: 4105.00 ft (KB) To 4180.00 ft (KB) (TVD)

Reference Elevations: 2900.00 ft (KB)

Total Depth: 3850.00 ft (KB) (TVD)

2893.00 ft (CF)

Hole Diameter: 7.88 inches Hole Condition: Fair

KB to GR/CF: 7.00 ft

Serial #: 8675

Inside

Press @ Run Depth: 549.06 psig @ 4106.00 ft (KB)

Capacity: 8000.00 psig

Start Date: 2013.03.15

End Date: 2013.03.15

Last Calib.: 2013.03.15

Start Time: 13:05:15

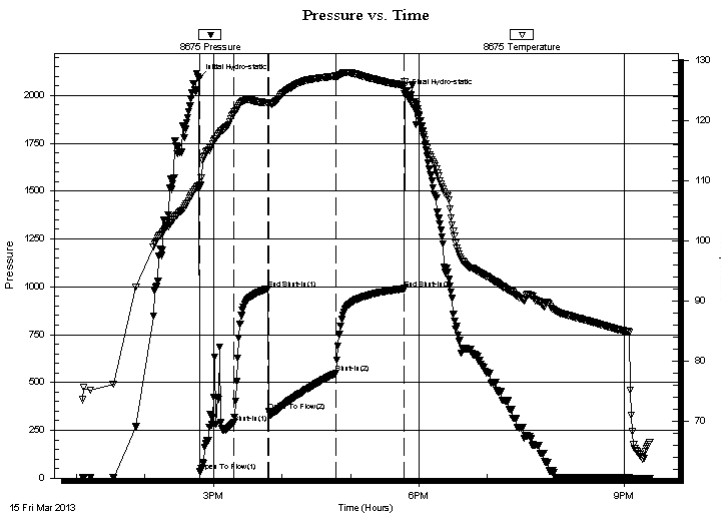
End Time: 21:22:45

Time On Btm: 2013.03.15 @ 14:47:15

Time Off Btm: 2013.03.15 @ 17:47:30

TEST COMMENT: B.O.B. in 5 min.
Bled off for 5 min. Weak surface return blow, dies in 25 min.
B.O.B. in 2 1/2 min
Bled off for 10 min. B.O.B. in 2 1/2 min.

PRESSURE SUMMARY



Time (Min.)	Pressure (psig)	Temp (deg F)	Annotation
0	2087.86	109.27	Initial Hydro-static
1	33.53	109.13	Open To Flow (1)
31	288.98	121.16	Shut-In(1)
61	989.33	122.98	End Shut-In(1)
61	351.00	122.96	Open To Flow (2)
121	549.06	127.46	Shut-In(2)
180	990.27	125.88	End Shut-In(2)
181	2008.71	126.45	Final Hydro-static

Recovery

Length (ft)	Description	Volume (bbl)
567.00	gcm 10%G 90%O	7.95
378.00	ocmg 20%O 30%M 50%G	5.30
189.00	gco 20%G 80%O	2.65
252.00	ocgm 10%O 40%G 50%M	3.53
0.00	2205 Feet Gas In Pipe	0.00

* Recovery from multiple tests

Gas Rates

	Choke (inches)	Pressure (psig)	Gas Rate (Mcf/d)



**TRILOBITE
TESTING, INC.**

DRILL STEM TEST REPORT

TOOL DIAGRAM

Prospect Oil & Gas Corp.

16-13s-30w Gove,KS

PO Box 837
Russell KS 67665 - 0837

Ottley #1

Job Ticket: 49966

DST#: 5

ATTN: Brad Hutchinson

Test Start: 2013.03.15 @ 13:05:00

Tool Information

Drill Pipe:	Length: 4091.78 ft	Diameter: 3.80 inches	Volume: 57.40 bbl	Tool Weight: 2500.00 lb
Heavy Wt. Pipe:	Length: 0.00 ft	Diameter: 0.00 inches	Volume: 0.00 bbl	Weight set on Packer: 25000.00 lb
Drill Collar:	Length: 0.00 ft	Diameter: 0.00 inches	Volume: 0.00 bbl	Weight to Pull Loose: 79000.00 lb
			<u>Total Volume: 57.40 bbl</u>	Tool Chased 0.00 ft
Drill Pipe Above KB:	14.28 ft			String Weight: Initial 64000.00 lb
Depth to Top Packer:	4105.00 ft			Final 69000.00 lb
Depth to Bottom Packer:	ft			
Interval between Packers:	75.00 ft			
Tool Length:	102.50 ft			
Number of Packers:	2	Diameter: 6.75 inches		

Tool Comments:

Tool Description

Length (ft) Serial No. Position Depth (ft) Accum. Lengths

Tool Description	Length (ft)	Serial No.	Position	Depth (ft)	Accum. Lengths
Change Over Sub	1.00			4078.50	
Shut In Tool	5.00			4083.50	
Hydraulic tool	5.00			4088.50	
Jars	5.00			4093.50	
Safety Joint	2.50			4096.00	
Packer	5.00			4101.00	27.50 Bottom Of Top Packer
Packer	4.00			4105.00	
Stubb	1.00			4106.00	
Recorder	0.00	8675	Inside	4106.00	
Recorder	0.00	8650	Outside	4106.00	
Perforations	6.00			4112.00	
Change Over Sub	1.00			4113.00	
Drill Pipe	63.00			4176.00	
Change Over Sub	1.00			4177.00	
Bullnose	3.00			4180.00	75.00 Bottom Packers & Anchor

Total Tool Length: 102.50



**TRILOBITE
TESTING, INC.**

DRILL STEM TEST REPORT

FLUID SUMMARY

Prospect Oil & Gas Corp.

16-13s-30w Gove,KS

PO Box 837
Russell KS 67665 - 0837

Ottley #1

Job Ticket: 49966

DST#: 5

ATTN: Brad Hutchinson

Test Start: 2013.03.15 @ 13:05:00

Mud and Cushion Information

Mud Type: Gel Chem

Cushion Type:

Oil API:

39 deg API

Mud Weight: 9.00 lb/gal

Cushion Length:

ft

Water Salinity:

ppm

Viscosity: 49.00 sec/qt

Cushion Volume:

bbbl

Water Loss: 6.00 in³

Gas Cushion Type:

Resistivity: ohm.m

Gas Cushion Pressure:

psig

Salinity: 2200.00 ppm

Filter Cake: 1.00 inches

Recovery Information

Recovery Table

Length ft	Description	Volume bbl
567.00	gcm 10%G 90%O	7.954
378.00	ocmg 20%O 30%M 50%G	5.302
189.00	gco 20%G 80%O	2.651
252.00	ocgm 10%O 40%G 50%M	3.535
0.00	2205 Feet Gas In Pipe	0.000

Total Length: 1386.00 ft Total Volume: 19.442 bbl

Num Fluid Samples: 0

Num Gas Bombs: 0

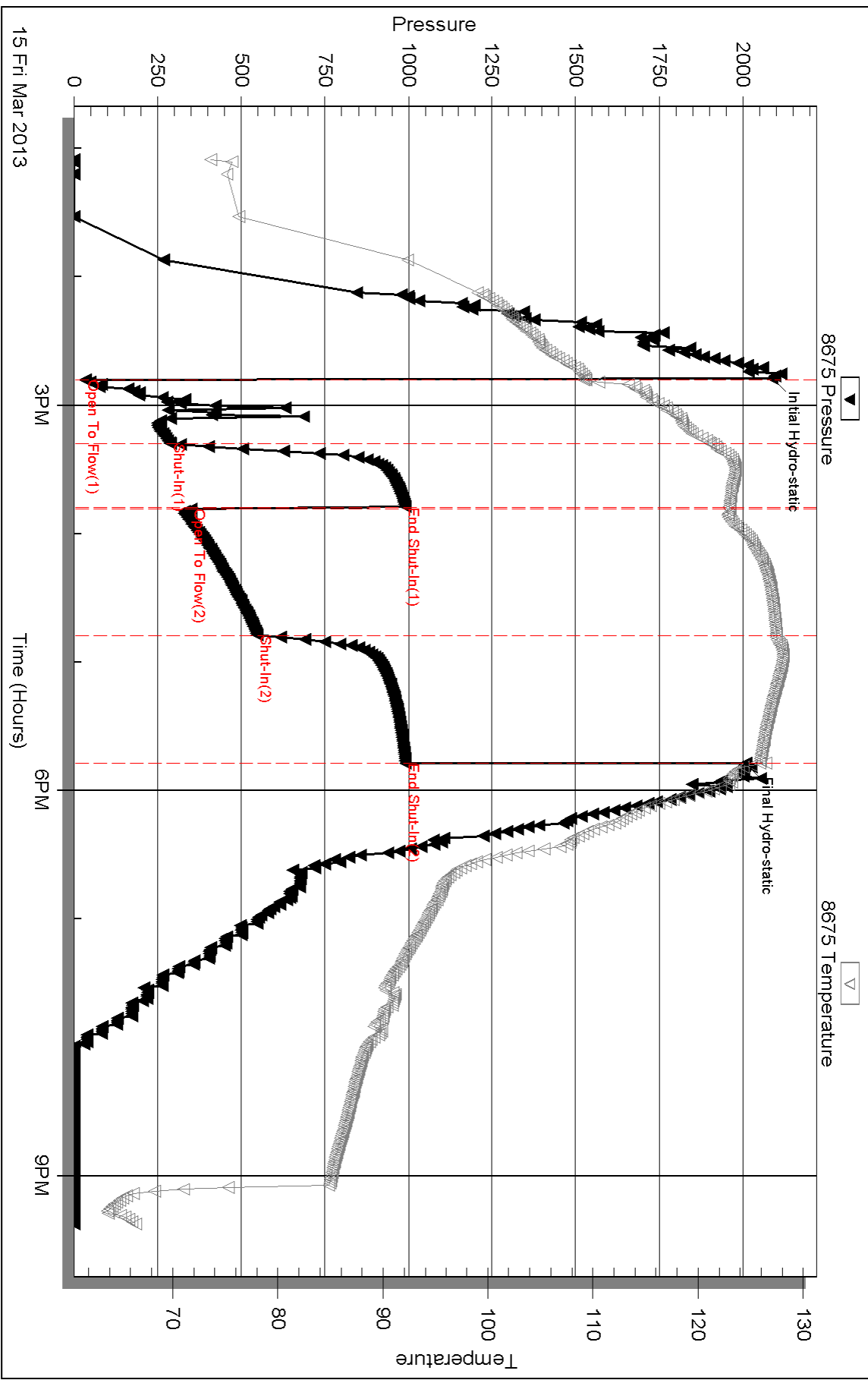
Serial #:

Laboratory Name:

Laboratory Location:

Recovery Comments: API: 37 @ 40 F = 39

Pressure vs. Time

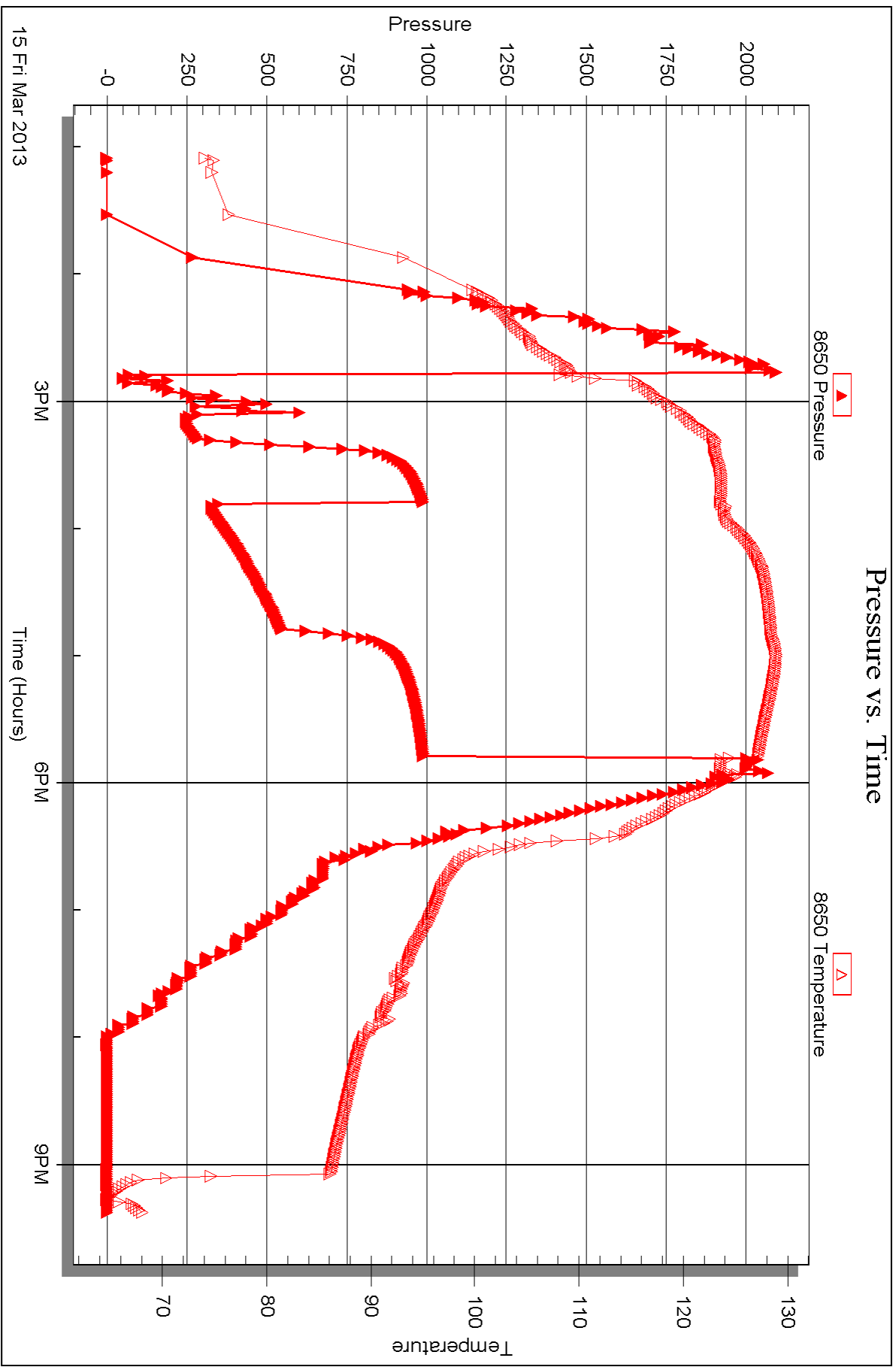


Serial #: 8650

Outside Prospect Oil & Gas Corp.

Oilley #1

DST Test Number: 5





DRILL STEM TEST REPORT

Prepared For: **Prospect Oil & Gas Corp.**

PO Box 837
Russell KS 67665 - 0837

ATTN: Brad Hutchinson

Ottley #1

16-13s-30w Gove,KS

Start Date: 2013.03.16 @ 20:20:00

End Date: 2013.03.17 @ 03:05:45

Job Ticket #: 49967 DST #: 6

Trilobite Testing, Inc
PO Box 362 Hays, KS 67601
ph: 785-625-4778 fax: 785-625-5620

Printed: 2013.03.21 @ 09:48:07



TRILOBITE TESTING, INC.

DRILL STEM TEST REPORT

Prospect Oil & Gas Corp.
 PO Box 837
 Russell KS 67665 - 0837
 ATTN: Brad Hutchinson

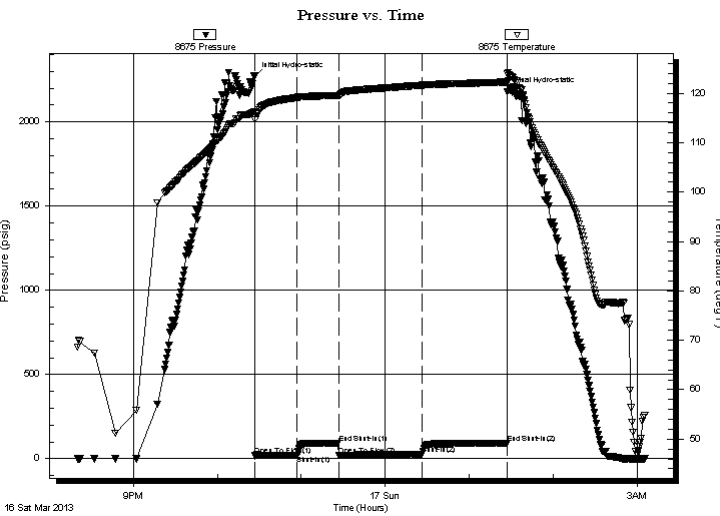
16-13s-30w Gove, KS
Ottley #1
 Job Ticket: 49967 **DST#: 6**
 Test Start: 2013.03.16 @ 20:20:00

GENERAL INFORMATION:

Formation: **Fort Scott**
 Deviated: No Whipstock: ft (KB)
 Time Tool Opened: 22:27:00
 Time Test Ended: 03:05:45
 Interval: **4400.00 ft (KB) To 4430.00 ft (KB) (TVD)**
 Total Depth: 4430.00 ft (KB) (TVD)
 Hole Diameter: 7.88 inches Hole Condition: Fair
 Test Type: Conventional Bottom Hole (Reset)
 Tester: Jace McKinney
 Unit No: 46
 Reference Elevations: 2900.00 ft (KB)
 2893.00 ft (CF)
 KB to GR/CF: 7.00 ft

Serial #: 8675 Inside
 Press @ Run Depth: 25.46 psig @ 4401.00 ft (KB) Capacity: 8000.00 psig
 Start Date: 2013.03.16 End Date: 2013.03.17 Last Calib.: 2013.03.17
 Start Time: 20:20:15 End Time: 03:05:45 Time On Btm: 2013.03.16 @ 22:26:45
 Time Off Btm: 2013.03.17 @ 01:27:00

TEST COMMENT: B.O.B. in 6 1/2 min.
 Bled off for 5 min. Very weak surface return blow
 B.O.B. in 1 1/2 min.
 Bled off for 10 min. No return blow



PRESSURE SUMMARY

Time (Min.)	Pressure (psig)	Temp (deg F)	Annotation
0	2270.03	116.29	Initial Hydro-static
1	18.24	114.71	Open To Flow (1)
31	22.48	119.14	Shut-In(1)
60	93.73	119.59	End Shut-In(1)
61	21.24	119.56	Open To Flow (2)
120	25.46	121.63	Shut-In(2)
180	91.25	122.29	End Shut-In(2)
181	2177.28	123.96	Final Hydro-static

Recovery

Length (ft)	Description	Volume (bbl)
30.00	100% Mud with oil scum	0.42

* Recovery from multiple tests

Gas Rates

Choke (inches)	Pressure (psig)	Gas Rate (Mcf/d)



**TRILOBITE
TESTING, INC.**

DRILL STEM TEST REPORT

TOOL DIAGRAM

Prospect Oil & Gas Corp.

16-13s-30w Gove,KS

PO Box 837
Russell KS 67665 - 0837

Ottley #1

Job Ticket: 49967

DST#: 6

ATTN: Brad Hutchinson

Test Start: 2013.03.16 @ 20:20:00

Tool Information

Drill Pipe:	Length: 4381.37 ft	Diameter: 3.80 inches	Volume: 61.46 bbl	Tool Weight: 2500.00 lb
Heavy Wt. Pipe:	Length: 0.00 ft	Diameter: 0.00 inches	Volume: 0.00 bbl	Weight set on Packer: 25000.00 lb
Drill Collar:	Length: 0.00 ft	Diameter: 0.00 inches	Volume: 0.00 bbl	Weight to Pull Loose: 76000.00 lb
			<u>Total Volume: 61.46 bbl</u>	Tool Chased 0.00 ft
Drill Pipe Above KB:	8.87 ft			String Weight: Initial 62000.00 lb
Depth to Top Packer:	4400.00 ft			Final 62000.00 lb
Depth to Bottom Packer:	ft			
Interval between Packers:	30.00 ft			
Tool Length:	57.50 ft			
Number of Packers:	2	Diameter: 6.75 inches		

Tool Comments:

Tool Description

Length (ft) Serial No. Position Depth (ft) Accum. Lengths

Tool Description	Length (ft)	Serial No.	Position	Depth (ft)	Accum. Lengths
Change Over Sub	1.00			4373.50	
Shut In Tool	5.00			4378.50	
Hydraulic tool	5.00			4383.50	
Jars	5.00			4388.50	
Safety Joint	2.50			4391.00	
Packer	5.00			4396.00	27.50 Bottom Of Top Packer
Packer	4.00			4400.00	
Stubb	1.00			4401.00	
Recorder	0.00	8675	Inside	4401.00	
Recorder	0.00	8650	Outside	4401.00	
Perforations	26.00			4427.00	
Change Over Sub	0.00			4427.00	
Drill Pipe	0.00			4427.00	
Change Over Sub	0.00			4427.00	
Bullnose	3.00			4430.00	30.00 Bottom Packers & Anchor

Total Tool Length: 57.50



**TRILOBITE
TESTING, INC.**

DRILL STEM TEST REPORT

FLUID SUMMARY

Prospect Oil & Gas Corp.

16-13s-30w Gove,KS

PO Box 837
Russell KS 67665 - 0837

Ottley #1

Job Ticket: 49967

DST#: 6

ATTN: Brad Hutchinson

Test Start: 2013.03.16 @ 20:20:00

Mud and Cushion Information

Mud Type: Gel Chem

Cushion Type:

Oil API:

deg API

Mud Weight: 9.00 lb/gal

Cushion Length:

ft

Water Salinity:

ppm

Viscosity: 57.00 sec/qt

Cushion Volume:

bbbl

Water Loss: 6.39 in³

Gas Cushion Type:

Resistivity: ohm.m

Gas Cushion Pressure:

psig

Salinity: 3000.00 ppm

Filter Cake: 1.00 inches

Recovery Information

Recovery Table

Length ft	Description	Volume bbl
30.00	100% Mud with oil scum	0.421

Total Length: 30.00 ft Total Volume: 0.421 bbl

Num Fluid Samples: 0

Num Gas Bombs: 0

Serial #:

Laboratory Name:

Laboratory Location:

Recovery Comments:

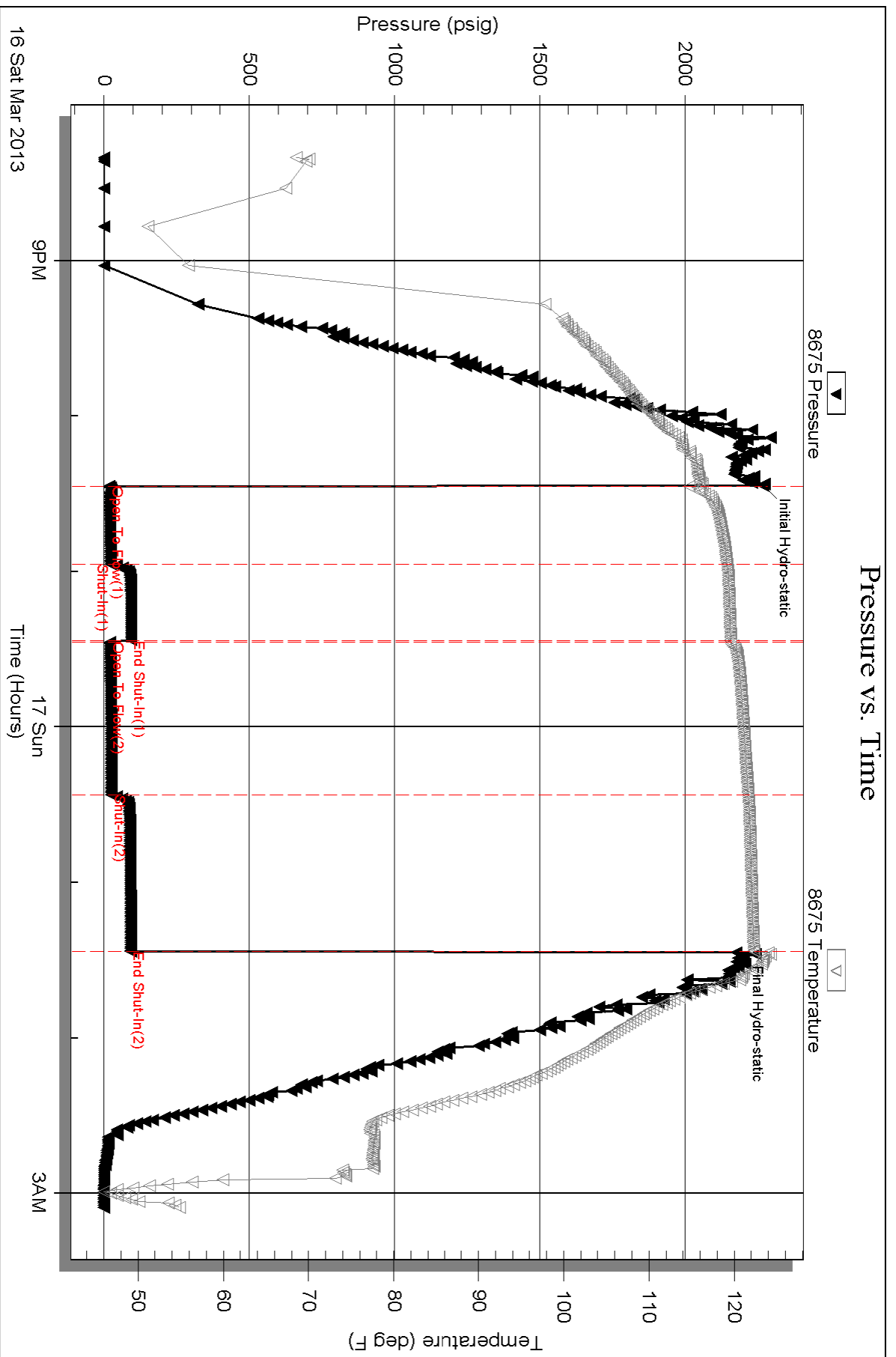
Serial #: 8675

Inside

Prospect Oil & Gas Corp.

Oilley #1

DST Test Number: 6

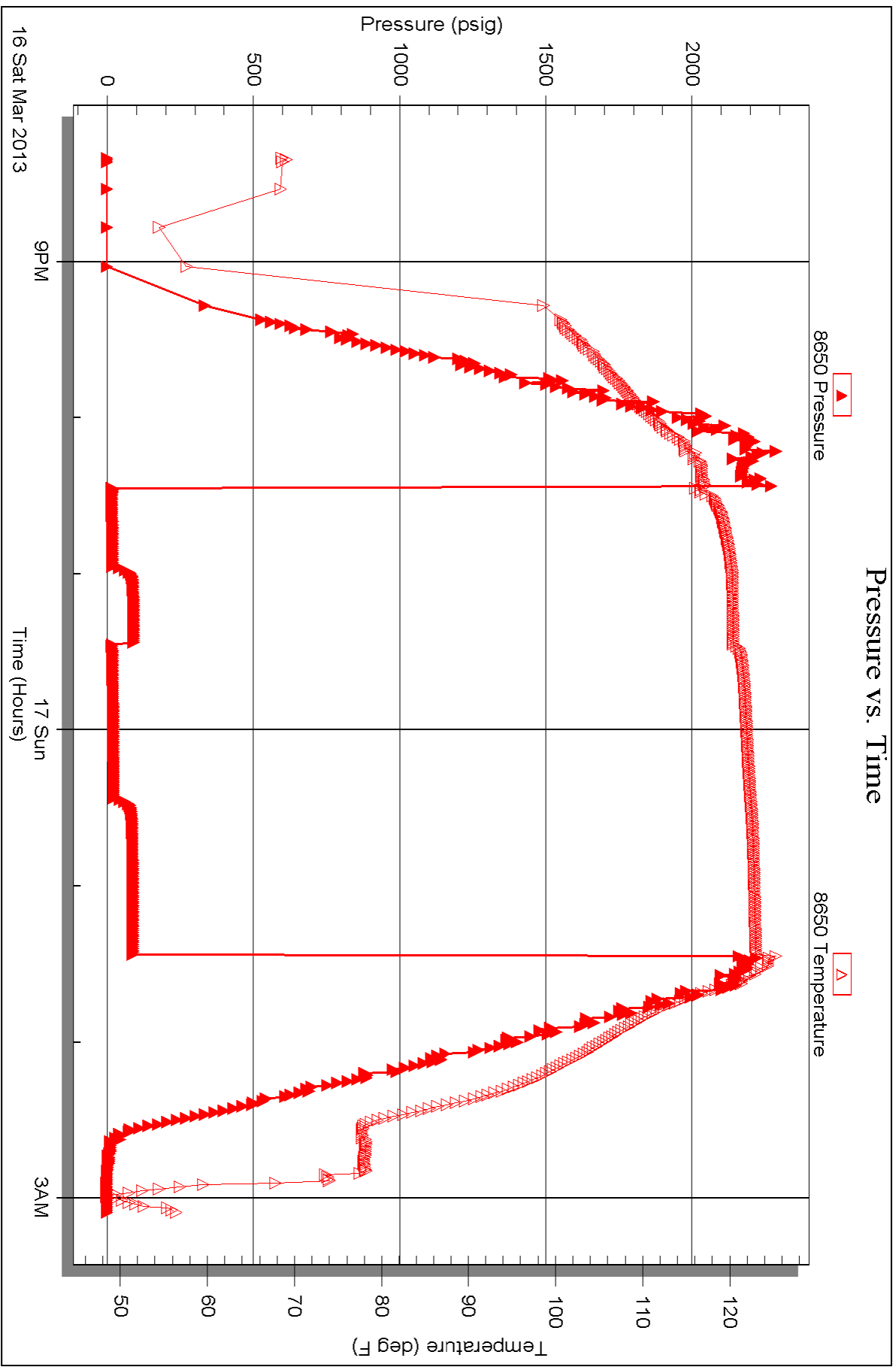


Serial #: 8650

Outside Prospect Oil & Gas Corp.

Oilley #1

DST Test Number: 6





TRILOBITE TESTING INC.

1515 Commerce Parkway • Hays, Kansas 67601

Test Ticket

NO. 49962

Well Name & No. Attley #1 Test No. 1 Date 3/12/13 3/13/13
 Company Prospect Oil & Gas Corp Elevation 2900 KB 2893 GL
 Address PO Box 837 Russell 145 67665-0837
 Co. Rep / Geo. Brad Hutchinson Rig Royal Rig 1
 Location: Sec. 16 Twp. 13s Rge. 30w Co. Goove Co. State Ks

Interval Tested 3770-3850 Zone Tested Tapeka
 Anchor Length 80 Drill Pipe Run 3773.73 Mud Wt. 9.0
 Top Packer Depth 3766 Drill Collars Run _____ Vis 51
 Bottom Packer Depth 3770 Wt. Pipe Run _____ WL 6.0
 Total Depth 3850 Chlorides 6000 ppm System LCM 1.5 #

Blow Description B.O.B. in 9 min.
Bled off for 5 min. No return below
B.O.B. in 11 min.
Bled off for 5 min. No return below

Rec	Feet of	%gas	%oil	%water	%mud
<u>137</u>	<u>Feet of MCW</u>			<u>50</u>	<u>50</u>
<u>378</u>	<u>Feet of MCW</u>			<u>80</u>	<u>20</u>
Rec _____	Feet of _____	%gas _____	%oil _____	%water _____	%mud _____
Rec _____	Feet of _____	%gas _____	%oil _____	%water _____	%mud _____
Rec _____	Feet of _____	%gas _____	%oil _____	%water _____	%mud _____

Rec Total 515 BHT 119 Gravity _____ API RW 30 @ 30 °F Chlorides 50,000 ppm

(A) Initial Hydrostatic 1,870 Test 1150 T-On Location 20:45
 (B) First Initial Flow 32 Jars 250 T-Started 22:50
 (C) First Final Flow 155 Safety Joint 75 T-Open 00:30
 (D) Initial Shut-In 922 Circ Sub N/C T-Pulled 2:30
 (E) Second Initial Flow 162 Hourly Standby _____ T-Out 4:20
 (F) Second Final Flow 265 Mileage 120 RT 186 Comments _____
 (G) Final Shut-In 914 Sampler _____
 (H) Final Hydrostatic 1,815 Straddle _____

Initial Open 30 Ruined Shale Packer _____
 Initial Shut-In 30 Ruined Packer _____
 Final Flow 30 Extra Packer _____
 Final Shut-In 30 Extra Recorder _____
 Sub Total 1661 Day Standby _____
 Total 1661 Accessibility _____
 MP/DST Disc't _____

Approved By _____ Our Representative [Signature]
 Trilobite Testing Inc. shall not be liable for damaged of any kind of the property or personnel of the one for whom a test is made, or for any loss suffered or sustained, directly or indirectly, through the use of its equipment, or its statements or opinion concerning the results of any test, tools lost or damaged in the hole shall be paid for at cost by the party for whom the test is made.



TRILOBITE TESTING INC.

1515 Commerce Parkway • Hays, Kansas 67601

Test Ticket

NO. 49963

Well Name & No. Ottley # 1 Test No. 2 Date 3/13/13
 Company Prospect Oil & Gas Corp Elevation 2900 KB 2893 GL
 Address PO Box 837 Russell KS 67665-0837
 Co. Rep / Geo. Brad Hutchinson Rig Royal Rig 1
 Location: Sec. 16 Twp. 135 Rge. 30w Co. Leve Co State KS

Interval Tested 3895-3928 Zone Tested Tornoto
 Anchor Length 33 Drill Pipe Run 3900-64 Mud Wt. 9.2
 Top Packer Depth 3891 Drill Collars Run _____ Vis 53
 Bottom Packer Depth 3895 Wt. Pipe Run _____ WL 6.8
 Total Depth 3928 Chlorides 2000 ppm System LCM 1.5#

Blow Description Built to 1" below
No return below
Built to 1/2" below
No return below

Rec	Feet of	%gas	%oil	%water	%mud
<u>15</u>	<u>Mud with oil scum</u>			<u>100</u>	
Rec	Feet of	%gas	%oil	%water	%mud
Rec	Feet of	%gas	%oil	%water	%mud
Rec	Feet of	%gas	%oil	%water	%mud
Rec	Feet of	%gas	%oil	%water	%mud

Rec Total 15 BHT 112 Gravity _____ API RW _____ @ _____ °F Chlorides _____ ppm
 (A) Initial Hydrostatic 1424 Test 1150 T-On Location 12:15
 (B) First Initial Flow 18 Jars 250 T-Started 13:00
 (C) First Final Flow 20 Safety Joint 75 T-Open 14:36
 (D) Initial Shut-In 853 Circ Sub N/C T-Pulled 17:36
 (E) Second Initial Flow 21 Hourly Standby _____ T-Out 19:02
 (F) Second Final Flow 22 Mileage 120 RT 186 Comments _____
 (G) Final Shut-In 876 Sampler _____
 (H) Final Hydrostatic 1,868 Straddle _____ Ruined Shale Packer _____
 Shale Packer _____ Ruined Packer _____
 Extra Packer _____ Extra Copies _____
 Extra Recorder _____ Sub Total 0
 Day Standby _____ Total 1661
 Accessibility _____ MP/DST Disc't _____
 Sub Total 1661

Initial Open 30
 Initial Shut-In 30
 Final Flow 60
 Final Shut-In 60

Approved By _____ Our Representative [Signature]

Trilobite Testing Inc. shall not be liable for damaged of any kind of the property or personnel of the one for whom a test is made, or for any loss suffered or sustained, directly or indirectly, through the use of its equipment, or its statements or opinion concerning the results of any test, tools lost or damaged in the hole shall be paid for at cost by the party for whom the test is made.



TRILOBITE TESTING INC.

1515 Commerce Parkway • Hays, Kansas 67601

Test Ticket

NO. 49964

4/10

Well Name & No. Off Hwy # 2 Test No. 3 Date 3/14/13
 Company Prospect Oil & Gas Corp. Elevation 2900 KB 2893 GL
 Address PO Box Russell KS 67665-0837
 Co. Rep / Geo. Brad Hutchinson Rig Royal Rig 1
 Location: Sec. 16 Twp. 13s Rge. 30w Co. Cove Co. State KS

Interval Tested 3950 - 4000 Zone Tested Lansing "B+C"
 Anchor Length 50 Drill Pipe Run 3952.80 Mud Wt. 9.2
 Top Packer Depth 3946 Drill Collars Run _____ Vis 53
 Bottom Packer Depth 3950 Wt. Pipe Run _____ WL 6.8
 Total Depth 4000 Chlorides 2,000 ppm System LCM 1.5#
 Blow Description Built to 1/2" below
No return below
No below
No return below

Rec	Feet of	%gas	%oil	%water	%mud
<u>5</u>	<u>Mud with few oil spots</u>			<u>100</u>	
Rec	Feet of	%gas	%oil	%water	%mud
Rec	Feet of	%gas	%oil	%water	%mud
Rec	Feet of	%gas	%oil	%water	%mud
Rec	Feet of	%gas	%oil	%water	%mud

Rec Total 5 BHT 111 Gravity _____ API RW _____ @ _____ °F Chlorides _____ ppm

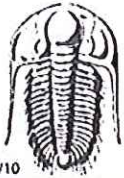
(A) Initial Hydrostatic 1,966 Test 1150 T-On Location 4:15
 (B) First Initial Flow 19.2 Jars 250 T-Started 4:55
 (C) First Final Flow 21 Safety Joint 75 T-Open 6:32
 (D) Initial Shut-In 179 Circ Sub N/C T-Pulled 8:32
 (E) Second Initial Flow 22 Hourly Standby _____ T-Out 10:02
 (F) Second Final Flow 23 Mileage 126 RT 186
 (G) Final Shut-In 56 Sampler _____
 (H) Final Hydrostatic 1,950 Straddle _____
 Shale Packer _____
 Extra Packer _____
 Extra Recorder _____
 Day Standby _____
 Accessibility _____

Initial Open 30
 Initial Shut-In 30
 Final Flow 30
 Final Shut-In 30

Sub Total 1661

MP/DST Disc't _____

Approved By _____ Our Representative [Signature]
 Trilobite Testing Inc. shall not be liable for damaged of any kind of the property or personnel of the one for whom a test is made, or for any loss suffered or sustained, directly or indirectly, through the use of its equipment, or its statements or opinion concerning the results of any test, tools lost or damaged in the hole shall be paid for at cost by the party for whom the test is made.



TRILOBITE TESTING INC.

1515 Commerce Parkway • Hays, Kansas 67601

Test Ticket

NO. 49965

Well Name & No. Ottley # 1 Test No. 4 Date 3/14/13
 Company Prospect Oil & Gas Corp. Elevation 2900 KB 2893 GL
 Address PO Box Russell 145 672665 - 0837
 Co. Rep / Geo. Brad Hutchinson Rig Royal Rig 1
 Location: Sec. 16 Twp. 13S Rge. 30W Co. Cove Co. State KS

Interval Tested 4000 - 4050 Zone Tested Kansas City "EFC"
 Anchor Length 50 Drill Pipe Run 3996.25 Mud Wt. 9.5
 Top Packer Depth 3996 Drill Collars Run _____ Vis 44
 Bottom Packer Depth 4000 Wt. Pipe Run _____ WL 6.0
 Total Depth 4050 Chlorides 1,800 ppm System LCM 1#

Blow Description Built to 3/4" below
No return below
Weak surface below
No return below

Rec	Feet of	%gas	%oil	%water	%mud
<u>10</u>	<u>Mud</u>			<u>100</u>	
Rec	Feet of	%gas	%oil	%water	%mud
Rec	Feet of	%gas	%oil	%water	%mud
Rec	Feet of	%gas	%oil	%water	%mud
Rec	Feet of	%gas	%oil	%water	%mud

Rec Total 10 BHT 110 Gravity _____ API RW _____ @ _____ ° F Chlorides _____ ppm

(A) Initial Hydrostatic 1,980 Test 1250 T-On Location 17:10
 (B) First Initial Flow 19 Jars 250 T-Started 17:30
 (C) First Final Flow 23 Safety Joint 75 T-Open 19:15
 (D) Initial Shut-In 865 Circ Sub N/A T-Pulled 21:15
 (E) Second Initial Flow 23 Hourly Standby _____ T-Out 22:49
 (F) Second Final Flow 25 Mileage 120 RT 186
 (G) Final Shut-In 816 Sampler _____
 (H) Final Hydrostatic 1,958 Straddle _____

Initial Open 30 Ruined Shale Packer _____
 Initial Shut-In 30 Ruined Packer _____
 Final Flow 30 Extra Packer _____
 Final Shut-In 30 Extra Recorder _____
 Sub Total 1761 Day Standby _____
 Total 1761 Extra Copies _____
 MP/DST Disc't _____
 Sub Total 1761 Accessibility _____

Approved By _____ Our Representative [Signature]
 Trilobite Testing Inc. shall not be liable for damaged of any kind of the property or personnel of the one for whom a test is made, or for any loss suffered or sustained, directly or indirectly, through the use of its equipment, or its statements or opinion concerning the results of any test, tools lost or damaged in the hole shall be paid for at cost by the party for whom the test is made.



TRIBOLITE TESTING INC.

1515 Commerce Parkway • Hays, Kansas 67601

Test Ticket

NO. 49966

Well Name & No. Ottley # 1 Test No. 5 Date 3/15/13
 Company Prospect Oil & Gas Corp Elevation 2900 KB 2893 GL
 Address PO Box 837 Russell KS 67665 - 0837
 Co. Rep / Geo. Brad Hutchinson Rig Royal Rig # 1
 Location: Soc. 16 Twp. 13S Rge. 30W Co. Goove Co. State KS

Interval Tested 4105 - 4180 Zone Tested Kansas City "ISK"
 Anchor Length 75 Drill Pipe Run 4091.78 Mud Wt. 9.4
 Top Packer Depth 4101 Drill Collars Run _____ Vis 49
 Bottom Packer Depth 4105 Wt. Pipe Run _____ WL 6.0
 Total Depth 4180 Chlorides 2,200 ppm System LCM 1.5#

Blow Description B.O.B. in 5 min.
Bled off for 5 min. Weak surface below, Dried in 25 min.
B.O.B. in 2 1/2 min.
Bled off for 10 min. B.O.B. in 2 1/2 min.

Rec	Feet of	%gas	%oil	%water	%mud
<u>0</u>	<u>2205 Feet Gas In Pipe</u>				
<u>567</u>	<u>600</u>	<u>10%</u>	<u>90%</u>		
<u>328</u>	<u>OCML6</u>	<u>50%</u>	<u>20%</u>		<u>30%</u>
<u>189</u>	<u>600</u>	<u>20%</u>	<u>80%</u>		
<u>252</u>	<u>OCGM</u>	<u>40%</u>	<u>10%</u>		<u>50%</u>

Rec Total 1386 BHT 128 Gravity 39 API RW _____ @ _____ °F Chlorides _____ ppm
 (A) Initial Hydrostatic 2,088 Test 12520 T-On Location 12:30
 (B) First Initial Flow 34 Jars 250 T-Started 13:05
 (C) First Final Flow 289 Safety Joint 75 T-Open 14:47
 (D) Initial Shut-In 989 Circ Sub W/C T-Pulled 17:47
 (E) Second Initial Flow 351 Hourly Standby _____ T-Out 21:23
 (F) Second Final Flow 549 Mileage 120 Mi 186 Comments _____
 (G) Final Shut-In 990 Sampler _____
 (H) Final Hydrostatic 2,009 Straddle _____ Ruined Shale Packer _____
 Shale Packer _____ Ruined Packer _____
 Extra Packer _____ Extra Copies _____
 Extra Recorder _____ Sub Total 0
 Day Standby _____ Total 1761
 Accessibility _____ MP/DST Disc't _____
 Sub Total 1761

Initial Open 30
 Initial Shut-In 30
 Final Flow 600
 Final Shut-In 600

Approved By _____ Our Representative [Signature]

Tribolite Testing Inc. shall not be liable for damaged of any kind of the property or personnel of the one for whom a test is made, or for any loss suffered or sustained, directly or indirectly, through the use of its equipment, or its statements or opinion concerning the results of any test, tools lost or damaged in the hole shall be paid for at cost by the party for whom the test is made.



TRILOBITE TESTING INC.

1515 Commerce Parkway • Hays, Kansas 67601

Test Ticket

NO. 49967

Well Name & No. Ottley # 1 Test No. 6 Date 3/16/13 3/17/13
 Company Prospect Oil & Gas Corp Elevation 2900 KB 2893 GL
 Address PO Box 837 Russell KS 67665-0837
 Co. Rep / Geo. Brad Hutchinson Rig Royal Rig # 1
 Location: Sec. 16 Twp. 135 Rge. 30w Co. Gove Co. State KS

Interval Tested 4400-4430 Zone Tested Fort Scott
 Anchor Length 30 Drill Pipe Run 4381.37 Mud Wt. 9.3
 Top Packer Depth 4396 Drill Collars Run _____ Vis 57
 Bottom Packer Depth 4400 Wt. Pipe Run _____ WL 6.4
 Total Depth 4430 Chlorides 3,000 ppm System LCM 1#

Blow Description B.O.B. in 6 1/2 min.
Bled off for 5 min. Very weak surface return below
B.O.B. in 1 1/2 min.
Bled off for 10 min. No return below

Rec	Feet of	%gas	%oil	%water	%mud
<u>30</u>	<u>Mud with oil skin</u>			<u>30</u>	
Rec	Feet of	%gas	%oil	%water	%mud
Rec	Feet of	%gas	%oil	%water	%mud
Rec	Feet of	%gas	%oil	%water	%mud
Rec	Feet of	%gas	%oil	%water	%mud

Rec Total 30 BHT 122 Gravity _____ API RW _____ @ _____ °F Chlorides _____ ppm

(A) Initial Hydrostatic <u>2,270</u>	<input checked="" type="checkbox"/> Test <u>1250</u>	T-On Location <u>17°10</u>
(B) First Initial Flow <u>18</u>	<input checked="" type="checkbox"/> Jars <u>250</u>	T-Started <u>20°20</u>
(C) First Final Flow <u>22</u>	<input checked="" type="checkbox"/> Safety Joint <u>75</u>	T-Open <u>22°26</u>
(D) Initial Shut-In <u>94</u>	<input checked="" type="checkbox"/> Circ Sub <u>N/C</u>	T-Pulled <u>1°26</u>
(E) Second Initial Flow <u>21</u>	<input type="checkbox"/> Hourly Standby _____	T-Out <u>3°06</u>
(F) Second Final Flow <u>25</u>	<input checked="" type="checkbox"/> Mileage <u>120 AT</u> 186	Comments _____
(G) Final Shut-In <u>91</u>	<input type="checkbox"/> Sampler _____	
(H) Final Hydrostatic <u>2,177</u>	<input type="checkbox"/> Straddle _____	<input type="checkbox"/> Ruined Shale Packer _____

Initial Open 30
 Initial Shut-In 30
 Final Flow 6.0
 Final Shut-In 6.0

Shale Packer _____
 Extra Packer _____
 Extra Recorder _____
 Day Standby _____
 Accessibility _____

Sub Total 1761

Sub Total 1761

Approved By _____ Our Representative [Signature]

Trilobite Testing Inc. shall not be liable for damaged of any kind of the property or personnel of the one for whom a test is made, or for any loss suffered or sustained, directly or indirectly, through the use of its equipment, or its statements or opinion concerning the results of any test, tools lost or damaged in the hole shall be paid for at cost by the party for whom the test is made.