



1133370

Operator Name: _____ Lease Name: _____ Well #: _____

Sec. _____ Twp. _____ S. R. _____ East West County: _____

INSTRUCTIONS: Show important tops of formations penetrated. Detail all cores. Report all final copies of drill stems tests giving interval tested, time tool open and closed, flowing and shut-in pressures, whether shut-in pressure reached static level, hydrostatic pressures, bottom hole temperature, fluid recovery, and flow rates if gas to surface test, along with final chart(s). Attach extra sheet if more space is needed.

Final Radioactivity Log, Final Logs run to obtain Geophysical Data and Final Electric Logs must be emailed to kcc-well-logs@kcc.ks.gov. Digital electronic log files must be submitted in LAS version 2.0 or newer AND an image file (TIFF or PDF).

| | | | | |
|-------------------------------------------------------------|----------------------------------------------------------|------------------------------|----------------------------------|---------------------------------|
| Drill Stem Tests Taken <i>(Attach Additional Sheets)</i> | <input type="checkbox"/> Yes <input type="checkbox"/> No | <input type="checkbox"/> Log | Formation (Top), Depth and Datum | <input type="checkbox"/> Sample |
| Samples Sent to Geological Survey | <input type="checkbox"/> Yes <input type="checkbox"/> No | Name | Top | Datum |
| Cores Taken | <input type="checkbox"/> Yes <input type="checkbox"/> No | | | |
| Electric Log Run | <input type="checkbox"/> Yes <input type="checkbox"/> No | | | |
| List All E. Logs Run: | | | | |

| CASING RECORD <input type="checkbox"/> New <input type="checkbox"/> Used | | | | | | | |
|---------------------------------------------------------------------------|-------------------|---------------------------|-------------------|---------------|----------------|--------------|----------------------------|
| Report all strings set-conductor, surface, intermediate, production, etc. | | | | | | | |
| Purpose of String | Size Hole Drilled | Size Casing Set (In O.D.) | Weight Lbs. / Ft. | Setting Depth | Type of Cement | # Sacks Used | Type and Percent Additives |
| | | | | | | | |
| | | | | | | | |
| | | | | | | | |

| ADDITIONAL CEMENTING / SQUEEZE RECORD | | | | |
|-----------------------------------------|------------------|----------------|--------------|----------------------------|
| Purpose: | Depth Top Bottom | Type of Cement | # Sacks Used | Type and Percent Additives |
| <input type="checkbox"/> Perforate | | | | |
| <input type="checkbox"/> Protect Casing | | | | |
| <input type="checkbox"/> Plug Back TD | | | | |
| <input type="checkbox"/> Plug Off Zone | | | | |

Did you perform a hydraulic fracturing treatment on this well? Yes No *(If No, skip questions 2 and 3)*

Does the volume of the total base fluid of the hydraulic fracturing treatment exceed 350,000 gallons? Yes No *(If No, skip question 3)*

Was the hydraulic fracturing treatment information submitted to the chemical disclosure registry? Yes No *(If No, fill out Page Three of the ACO-1)*

| Shots Per Foot | PERFORATION RECORD - Bridge Plugs Set/Type Specify Footage of Each Interval Perforated | Acid, Fracture, Shot, Cement Squeeze Record <i>(Amount and Kind of Material Used)</i> | Depth |
|----------------|-------------------------------------------------------------------------------------------|------------------------------------------------------------------------------------------|-------|
| | | | |
| | | | |
| | | | |
| | | | |
| | | | |

TUBING RECORD: Size: _____ Set At: _____ Packer At: _____ Liner Run: Yes No

Date of First, Resumed Production, SWD or ENHR. _____ Producing Method:
 Flowing Pumping Gas Lift Other *(Explain)* _____

| Estimated Production Per 24 Hours | Oil Bbls. | Gas Mcf | Water Bbls. | Gas-Oil Ratio | Gravity |
|-----------------------------------|-----------|---------|-------------|---------------|---------|
| | | | | | |

| | | |
|--------------------------------------------------------------------------------------------------------------------------------------------------------------------------|-------------------------------------------------------------------------------------------------------------------------------------------------------------------------------------------------------------------------------------------------------------------------------------|-----------------------------------------------|
| DISPOSITION OF GAS: <input type="checkbox"/> Vented <input type="checkbox"/> Sold <input type="checkbox"/> Used on Lease <i>(If vented, Submit ACO-18.)</i> | METHOD OF COMPLETION: <input type="checkbox"/> Open Hole <input type="checkbox"/> Perf. <input type="checkbox"/> Dually Comp. <input type="checkbox"/> Commingled <i>(Submit ACO-5)</i> <i>(Submit ACO-4)</i> <input type="checkbox"/> Other <i>(Specify)</i> _____ | PRODUCTION INTERVAL: _____ _____ |
|--------------------------------------------------------------------------------------------------------------------------------------------------------------------------|-------------------------------------------------------------------------------------------------------------------------------------------------------------------------------------------------------------------------------------------------------------------------------------|-----------------------------------------------|

| | |
|-----------|-------------------------|
| Form | ACO1 - Well Completion |
| Operator | Brito Oil Company, Inc. |
| Well Name | Fairleigh 'G' 1-19 |
| Doc ID | 1133370 |

Tops

| Name | Top | Datum |
|-------------|------|-------|
| Anhydrite | 2190 | +610 |
| B/Anhydrite | 2215 | +585 |
| Heebner | 3723 | -923 |
| Lansing | 3761 | -961 |
| Stark | 4018 | -1218 |
| Fort Scott | 4286 | -1486 |
| Cherokee | 4313 | -1513 |
| Mississippi | 4447 | -1467 |

ALLIED OIL & GAS SERVICES, LLC

760201

Fed. Fax I.D. # 20-8651475

REMIT TO P.O. BOX 93999
SOUTHLAKE, TEXAS 76092

SERVICE POINT:

Oakley

| | | | | | | | |
|---------------------------|-------------------|----------------------------------------------|-----------------|--------------------------------------|---------------------|--------------------------|----------------------------|
| DATE <u>2-27-13</u> | SEC. <u>19</u> | TWP. <u>15</u> | RANGE <u>32</u> | CALLED OUT | ON LOCATION | JOB START <u>9:00 pm</u> | JOB FINISH <u>10:00 pm</u> |
| FAIR LEASE <u>Liegh G</u> | WELL# <u>1-19</u> | LOCATION <u>Oakley Ks, 235 W To Dead End</u> | | | COUNTY <u>Logan</u> | STATE <u>KS</u> | |
| OLD OR NEW (Circle one) | | | | S To Tank Batteries E side East into | | | |

CONTRACTOR Duke 4
 TYPE OF JOB PTA
 HOLE SIZE 7 7/8 T.D. 4540
 CASING SIZE _____ DEPTH _____
 TUBING SIZE _____ DEPTH _____
 DRILL PIPE 4 1/2 DEPTH 2200
 TOOL _____ DEPTH _____
 PRES. MAX _____ MINIMUM _____
 MEAS. LINE _____ SHOE JOINT _____
 CEMENT LEFT IN CSG. _____
 PERFS. _____
 DISPLACEMENT _____

OWNER Same
 CEMENT
 AMOUNT ORDERED 205 sks 60/40 4% gel
1/4 flo-seal
 COMMON 123 sks @ 17.90 2201.70
 POZMIX 82 sks @ 9.35 766.70
 GEL 7 sks @ 23.40 163.80
 CHLORIDE _____ @ _____
 ASC _____ @ _____
Flo-seal 51LBS @ 2.97 151.47
 _____ @ _____
 _____ @ _____
 _____ @ _____
 _____ @ _____
 HANDLING 220.16 cu/ft @ 2.48 545.99
 MILEAGE 2.60 ton/mile 9.19 ton 836.29
 TOTAL 4665.95

EQUIPMENT
 PUMP TRUCK CEMENTER Dane Ratzloff
 # 431 HELPER Paul Beaver
 BULK TRUCK
 # 404 DRIVER Ty Schrock
 BULK TRUCK
 # DRIVER _____

REMARKS:
25 SKS at 2200'
100 SKS at 1225'
40 SKS at 273'
10 SKS at 40'
30 SKS at Rat hole

CHARGE TO: Bito Oil Co.
 TREET _____
 CITY _____ STATE _____ ZIP _____

SERVICE
 DEPTH OF JOB 2200'
 PUMP TRUCK CHARGE 2483.59
 EXTRA FOOTAGE _____ @ _____
 MILEAGE 35 @ 7.70 269.50
 MANIFOLD _____ @ _____
Light Vehical @ 4.40 154.00
 _____ @ _____
 TOTAL 2907.09

PLUG & FLOAT EQUIPMENT
8 5/8
1 Dry hole @ 107.64
 _____ @ _____
 _____ @ _____
 _____ @ _____
 TOTAL 107.64

Notice: Allied Oil & Gas Services, LLC.
 You are hereby requested to rent cementing equipment
 and furnish cementer and helper(s) to assist owner or
 contractor to do work as is listed. The above work was
 done to satisfaction and supervision of owner agent or
 contractor. I have read and understand the "GENERAL
 TERMS AND CONDITIONS" listed on the reverse side.

PRINTED NAME Rich Wheeler
 SIGNATURE Rich Wheeler

SALES TAX (If Any) _____
 TOTAL CHARGES 7680.68
 DISCOUNT 1920.17 IF PAID IN 30 DAYS
5,760.51 Net.

ALLIED OIL & GAS SERVICES, LLC 058850

Federal Tax I.D.# 20-5975804

EMIT TO P.O. BOX 93999
SOUTHLAKE, TEXAS 76092

SERVICE POINT:

Daddy 14

Fairleigh 6/1/19

| | | | | | | | |
|------------------------|---------------------------------------------|----------------|-----------------|------------------------------------|-----------------|-------------------------|--------------------------|
| DATE <i>2/14/18</i> | SEC <i>19</i> | TWP. <i>15</i> | RANGE <i>32</i> | CALLED OUT | ON LOCATION | JOB START <i>7:30am</i> | JOB FINISH <i>8:00pm</i> |
| WELL # <i>1-19</i> | LOCATION <i>Daddy 235 W D Dead End Loop</i> | | | COUNTY | STATE <i>Ks</i> | | |
| LD OR NEW (Circle one) | | | | STO Tank Batteries E side E c S170 | | | |

CONTRACTOR *Daddy 4*

TYPE OF JOB *Surface*

PIPE SIZE *10 1/4* T.D. *236'*

ASING SIZE *8 5/8* DEPTH *236'*

JOBING SIZE DEPTH

RILL PIPE DEPTH

COL DEPTH

RES. MAX MINIMUM

EAS. LINE SHOE JOINT

EMENT LEFT IN CSG. *15'*

IRFS.

PLACEMENT *14.0777 88L H₂O*

OWNER *Same*

CEMENT AMOUNT ORDERED *165 com 370 cl 201 gal*

| | | | |
|----------|------------|----------------|----------------|
| COMMON | <i>165</i> | @ <i>17.20</i> | <i>2853.50</i> |
| POZMIX | | @ | |
| GEL | <i>3</i> | @ <i>23.40</i> | <i>70.20</i> |
| CHLORIDE | <i>6</i> | @ <i>64.00</i> | <i>384.00</i> |
| ASC | | @ | |

IMP TRUCK CEMENTER *Alan Ryan 1*

422 HELPER *Wayne McGilley 2*

JLK TRUCK *397* DRIVER *Darin Harb. 3*

JLK TRUCK DRIVER

HANDLING *128.415 CF @ 2.90* *442.42*

MILBAGE *2.60 700/mile 8.143 700 240* *740*

287.98 TOTAL *4591.74*

REMARKS:

By, Circulate, mix cement, Displace

by w/14 88L H₂O

Cement did Circulate

Thank You

Alan, Wayne, Darin

SERVICE

DEPTH OF JOB *236'*

PUMP TRUCK CHARGE *1522.25*

EXTRA FOOTAGE @

MILBAGE *35 @ 7.20* *252.00*

MANIFOLD *c Head* @ *225.00*

Cite Vehicle @ *410* *154.00*

TOTAL *2210.25*

ARGE TO: *Brito*

REET

TY STATE ZIP

Allied Oil & Gas Services, LLC.

are hereby requested to rent cementing equipment and furnish cementer and helper(s) to assist owner or contractor to do work as is listed. The above work was done to satisfaction and supervision of owner agent or contractor. I have read and understand the "GENERAL TERMS AND CONDITIONS" listed on the reverse side.

INTED NAME *Rich Wheeler*

INATURE *Rich Wheeler*

PLUG & FLOAT EQUIPMENT

8 5/8 wooden Plug @ *107* *46*

@

@

@

@

TOTAL *107 46*

SALES TAX (If Any) *274.17*

TOTAL CHARGES *6,909.35*

DISCOUNT *1450.96* IF PAID IN 30 DAYS

net 5458.39 *2170*

Conservation Division
Finney State Office Building
130 S. Market, Rm. 2078
Wichita, KS 67202-3802



Phone: 316-337-6200
Fax: 316-337-6211
<http://kcc.ks.gov/>

Mark Sievers, Chairman
Thomas E. Wright, Commissioner
Shari Feist Albrecht, Commissioner

Sam Brownback, Governor

April 16, 2013

Raul F. Brito
Brito Oil Company, Inc.
1700 N WATERFRONT PKWY
Bldg 300 Suite C
WICHITA, KS 67206

Re: ACO1
API 15-109-21156-00-00
Fairleigh 'G' 1-19
NE/4 Sec.19-15S-32W
Logan County, Kansas

Dear Production Department:

We are herewith requesting that the Well Completion Form ACO-1 and attached information for the subject well be held confidential for a period of two years.

Should you have any questions or need additional information regarding subject well, please contact our office.

Respectfully,
Raul F. Brito

KEVIN L. KESSLER
CONSULTING PETROLEUM GEOLOGIST
(316) 522-7338

OPERATOR : BRITO OIL COMPANY, INC.

LEASE : FAIRLEIGH 'G'

WELL # : 1 - 19

LOCATION : 400' FNL & 990' FEL

SEC: 19

TWP : 15 S

RGE : 32 W

COUNTY : LOGAN

STATE : KANSAS

ELEVATION

KB : 2800

GL : 2791

MEASUREMENTS FROM

KB

CASING RECORD

SURFACE :

8 5/8" @ 236'

PRODUCTION :

NONE

ELECTRICAL SURVEYS:

CDL/CNL

DIL

MICRO

CONTRACTOR : DUKE DRILLING RIG # 4

COMM: 02 / 14 / 2013

COMP : 02 / 27 / 2013

RTD : 4540

LOG TD : 4545

SAMPLES SAVED FROM : 3500

TO: RTD

GEOLOGICAL SUPERVISION FROM : 3500

TO : RTD

MUD UP : 3400

TYPE MUD : CHEMICAL

| FORMATION | LOG | | SAMPLE | | STRUCT. COMP. |
|-------------|------|--------|--------|--------|------------------|
| | TOP | DATUM | TOP | DATUM | |
| HEEBNER | 3726 | - 926 | 3723 | - 923 | FLAT |
| LANSING | 3764 | - 964 | 3761 | - 961 | + 01 |
| STARK | 4022 | - 1222 | 4018 | - 1218 | + 06 |
| BASE/KC | 4102 | - 1302 | 4096 | - 1296 | + 07 |
| FORT SCOTT | 4291 | - 1491 | 4286 | - 1486 | + 02 |
| CHEROKEE | 4318 | - 1518 | 4313 | - 1513 | + 03 |
| MISSISSIPPI | 4450 | - 1650 | 4447 | - 1647 | - 01 |

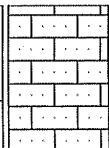
REFERENCE WELL FOR STRUCTURAL COMPARISON :

BRITO OIL COMPANY, INC # 1 - 19 FAIRLEIGH 'A'

SEC 19 - T 15 S - R 32 W

LOGAN COUNTY KANSAS

3500



LST: CRM - TAN - GRAY
 EXTAL SUBCHKY - CHKY

FXTAL COLORED
SOFT ARENACEOUS IN
PART MINOR FOSS. PR VIS.
PIN POINT POR NSO

LST: CRM - TAN - GRAY
FXTAL SOFT CHKY AREN. A.
A. OOLITIC IN PART PR
INTRPRT POR. NSO

LST: CRM - GRAY - TAN -
BRN FXTAL SUBCKY - DNSE
MINOR FOSS. NO VIS. POR.
NSO

LST: CRM - GRAY TAN - BRN
FXTAL SUBCHKY - CHKY
SOFT OOLITIC
ARENACEOUS IN PART PR -
FR INTRPRT POR NSO

LST: CRM - TAN FXTAL
SUBCHKY - DNSE FOSS IN
PART MINOR BLK SHALE NO
VIS. POR. NSO

LST: CRM - TAN - BRN FXTAL
SUBCHKY - DNSE SLI FOSS
ARENACEOUS IN PART
RARE OOLITE NO VIS. POR.
NSO

LST: CRM - TAN - BRN FXTAL
SUBCHKY - DNSE MINOR
SHALE NO VIS. POR. NSO

LST: CRM - TAN FXTAL
SUBCHKY - CHKY MINOR
OOLITES RARE FOSS. FR
AMT GRAY CALCAREOUS
SHALE NO VIS. POR. NSO

LST: CRM - TAN - BRN FXTAL
SOFT CHKY OOLITIC IN
PART PR INTRPRT. POR.
NSO

LST: CRM - TAN - BRN FXTAL
SUBCKY - CHKY FOSS. IN
PART MINOR OOLITES NO
VIS. POR. NSO

LST: A. A. W/ FEW PCS
CHERT NO VIS. POR. NSO

LST: CRM - TAN - BRN FXTAL
SOFT CHKY RARE FOSS.
NO VIS. POR. NSO FR AMT.
BLK CARB. SHALE

SHALE: GRAY SILTY W/

MUD CHECK @ 3550
VIS: 44
WT: 8.9

MUD CHECK @ 3650
VIS: 52
WT: 8.9

HEEBNER 3723 (-923)

3550

3600

3650

3700

3750

3800

3850

3900

3950

LANSING 3761 (- 961)

"B" ZONE

←----- CFS 60"

"E" ZONE

"F" ZONE

←----- CFS 60"

"H" ZONE

←----- CFS 60"

DST # 1

DST # 2

SHALE: GRAY SILTY W/
MINOR AMT DNSE MOTTLED
MICRITIC LST NSO

LST: WHT - CRM FXTAL
MOST DNSE FOSS. IN PART
MINOR CHERT NO VIS. POR.
NSO

LST: WHT - CRM FXTAL
SUBCHKY - DNSE RARE
FOSS. NO VIS. POR. NSO FR
AMT GRAY SILTY SHALE

LST: WHT - CRM FXTAL
SUBCHKY - CHKY SOFT
FOSS IN PART FR INTRPRT.
POR. NSO

SHALE: GRAY CALC. NSO

LST: WHT - CRM FXTAL
SUBCHKY - DNSE OOLITIC
FSFO VRY FNT ODOR SCATT
SPTY - SUBSAT MED BRN
STN FEW GAS BUBBLES FR
INTRPRT POR.

SHALE: GRAY SILTY

LST: WHT - CRM - GRAY
FXTAL MOST DNSE RARE
FOSS MICRITIC IN PART NO
VIS. POR. NSO

LST: A. A. NO VIS. POR. NSO
SHALE: DRK GRAY - BLACK
CARB.

LST: WHT - CRM - GRAY
FXTAL SUBCHKY - DNSE
FOSS IN PART SSFO FR
ODOR 5 - 6 PCS/TRAY
SUBSAT - SAT. LT - MED BRN
STN. PR - FR INTRPRT FOSS
POR.

LST: WHT - CRM FXTAL
MOST DNSE RARE FOSS NO
VIS. POR. NSO

LST: WHT - CRM - GRAY
FXTAL MOST DNSE BRITTLE
OOLICASTIC IN PART GD -
EXCEL. OOLICASTIC POR.
NSO

LST: WHT - CRM FXTAL
SUBCHKY - DNSE MINOR
OOLITES MOST TITE PR VIS.
INTRPRT. POR. NSO

LST: WHT - CRM FXTAL
SUBCHKY - DNSE RARE
FOSS MINOR OOLITES NO
VIS. POR. NSO

SHALE: BLACK CARB. W/
DNSE MOTTLED MICRITIC
LST. NSO

SHALE: GRAY CALC.

LST: CRM - GRAY FXTAL
SUBCHKY - DNSE SLI FOSS
ARGILACEOUS IN PART PR
VIS INTRPRT. POR. NSO

MUD CHECK @ 3750
VIS: 51
WT: 9.0

DST # 1 (3785 - 3815) 'B' ZN
REC: 65' MCW VSSO
IFP: 18 - 29#
ISIP: 1109#
FFP: 29 - 48#
FSIP: 1068#

DEVIATION: 3/4 DEG
PIPE STRAP @ 3815
STRAP SHORT 0.16'

DST # 2 (3835 - 3875) "E -
F" ZONES
REC: 345' MCW VSSO
IFP: 23 - 66#
ISIP: 1086#
FFP: 68 - 145#
FSIP: 1074#

MUD CHECK @ 3850
VIS: 55
WT: 8.9

DEVIATION 3/4 DEG

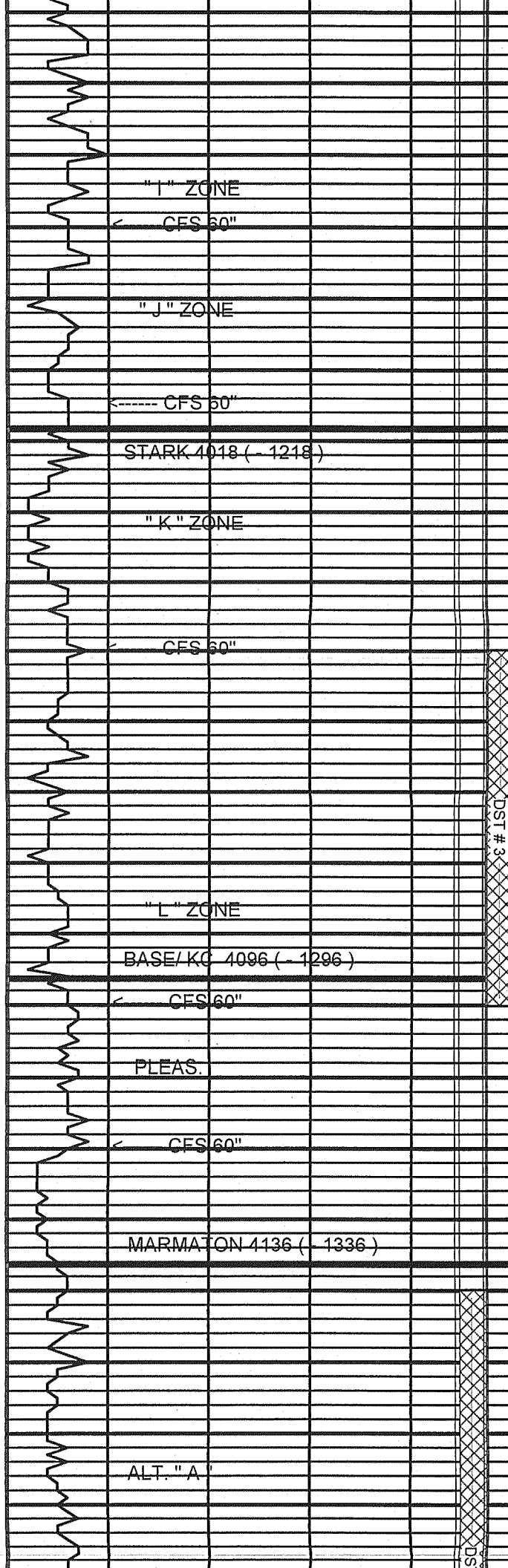
MUD CHECK @ 3950
VIS: 50
WT: 9.1

4000

4050

4100

4150



LST: CRM - WHT - GRAY
FXTAL SUBCHKY - DNSE
FOSS IN PART NO VIS. POR.
NSO MINOR GRAY CALC.
SHALE

LST: CRM - WHT - GRAY
FXTAL SUBCHKY - DNSE
FOSS IN PART NO VIS. POR.
NSO

LST: A. A. NO VIS. POR. NSO
SHALE: GRAY SILTY

LST: WHT - CRM - GRAY
FXTAL SUBCHKY - MOSTLY
DNSE FOSS. IN PART NO
VIS. POR. NSO

SHALE: BLACK CARB. W/ FR
AMT DNSE MOTTLED LST.
NO VIS. POR. NSO

LST: WHT - CRM - GRAY
FXTAL CHKY - SUBCHKY -
DNSE FOSS IN PART RARE
OOLITES PR - FR VIS.
INTRPRT. POR. NSO

LST: WHT - CRM - GRAY
FXTAL MOST DNSE BLOCKY
NO VIS. POR. NSO

LST: A. A. NO VIS. POR. NSO

SHALE: BLACK CARB. W/
TRC. DOLOMITIC LST. FR
VUGGY POR. SSFO FNT - FR
ODOR 2 - 3 PCS W/ SAT MED
BRN STN

LST: CRM - GRAY FXTAL
SUBCHKY - DNSE OOLITIC
MINOR FOSS. SSFO FNT
ODOR SCATT LT - MED BRN
SUBSAT - SAT STN PR - FR
INTRPRT POR.

LST: WHT - CRM - GRAY
FXTAL SUBCHKY - MOSTLY
DNSE MINOR FOSS. NO VIS.
POR. NSO

LST: A. A. NO VIS. POR. NSO
SHALE: RED - BRN SOFT
MARL LIKE GUMMY NO VIS.
POR. NSO

SHALE: A. A.

LST: CRM - TAN - BRN FXTAL
MICRITIC IN PART RARE
FOSS. NO VIS. POR. NSO

SHALE: GRAY - DRK GRAY
SILTY MINOR GRAY
MOTTLED DNSE LST. NO
VIS. POR. NSO

LST: CRM - TAN - BRN FXTAL
SUBCHKY - DNSE OOLITIC
VERY SHALEY W/ RED - BRN
SILTY SHALE NO VIS. POR.
NSO

SHUT DOWN FOR
SNOW STORM @ 3990
1:00 P.M. 02-20-2013
BACK ON LOC. 7:00A.M.
02-23-2013

MUD CHECK @ 4050
VIS: 53
WT: 9.1

DST # 3 (4050-4100)"L" ZN
REC: 1520' MCW
IFP:46 - 342#
ISIP:1189#
FFP:360 - 696#
FSIP: 1166#

DEVIATION: 1/4 DEG.

MUD CHECK @ 4150
VIS: 50
WT: 9.0

DST#4 (4140-4220) MARM.
REC: 5' MUD SSO
IFP: 23 - 26#

4200

4250

4300

4350

4400

ALT. " B "

CFS 60"

ALT. " C "

CFS 60"

PAWNEE 4234 (- 1434)

CFS 60"

FORT SCOTT 4286 (- 1486)

CHEROKEE 4313 (- 1513)

CFS 60"

JOHNSON ZONE 4358 (- 1558)

CFS 60"

SHALE: BRN ARGILLACEOUS
LST: WHT - CRM FXTAL
SUBCHKY - DNSE RARE
FOSS. SSFO FNT ODOR
SCATT SPTY - SUBSAT STN
PR VUGGY & PIN POINT
POR.

LST: WHT - CRM FXTAL
SUBCHKY - DNSE SSFO FNT
ODOR STN A. A.

LST: CRM - TAN FXTAL FOSS
IN PART FSFO GD ODOR
SCATT SUBSAT - SAT MED
BRN STN PR - FR FOSS POR.

SHALE: BLACK CARB. W/
MINOR DNSE BRN LST. NSO

LST: WHT - CRM FXTAL
DNSE OOLITIC IN PART
MINOR FOSS. 1 - 2 PCS W/
LT - MED BRN SUBSAT STN
RARE SFO NO ODOR PR
VUGGY POR.

LST: A. A. NO VIS. POR. NSO

SHALE: BLACK CARB. NSO

LST: CRM - TAN - GRAY
FXTAL MOSTLY DNSE RARE
FOSS NO VIS. POR. NSO

SHALE: BLACK CARB. NSO

LST: TAN - BRN FXTAL
MOSTLY DNSE OOLITIC IN
PART FSFO FR ODOR SCATT
SUBSAT - SAT MED BRN
STN PR - FR INTRPRT. POR.

SHALE: BLACK CARB. NSO

LST: CRM - GRAY FXTAL SLI
FOSS. CPL. PCS W/ DRK
BRN - BLK SPTY STN PR
VUG POR. NSFO NO ODOR

SHALE: DRK GRAY - BLK W/
INTERBEDDED GRAY DNSE
LST. NO VIS. POR. NSO

LST: A. A. MOST DNSE NSO

LST: CRM - TAN - BRN FXTAL
MOST DNSE BRITTLE SLI
FOSS MEALY IN PART FR -
GD SFO GOOD ODOR SCATT
- FR AMT SUBSAT - SAT
MED BRN STN PR - FR
VUGGY POR.

LST: CRM - TAN - BRN MOST
DNSE FOSS IN PART FR - GD
SFO SCATT MED BRN STN
A. A. PR - FR VUGGY POR.

SHALE: DRK GRAY - BLK W/
FOSS. CPL. PCS W/ DRK
BRN - BLK SPTY STN PR
VUG POR. NSFO NO ODOR

ISIP: 331#
FFP: 25 - 27#
FSIP: 239#

DEVIATION: 3/4 DEG

MUD CHECK @ 4250
VIS: 54
WT: 9.1

DST # 5 (4280 - 4390)
FT. SCOTT- JOHNSON ZN
REC: 170' OCM 5%O
IFP: 26 - 60#
ISIP: 988#
FFP: 65 - 104#
FSIP: 927#

MUD CHECK @ 4350
VIS: 54
WT: 9.2

DEVIATION: 3/4 DEG.

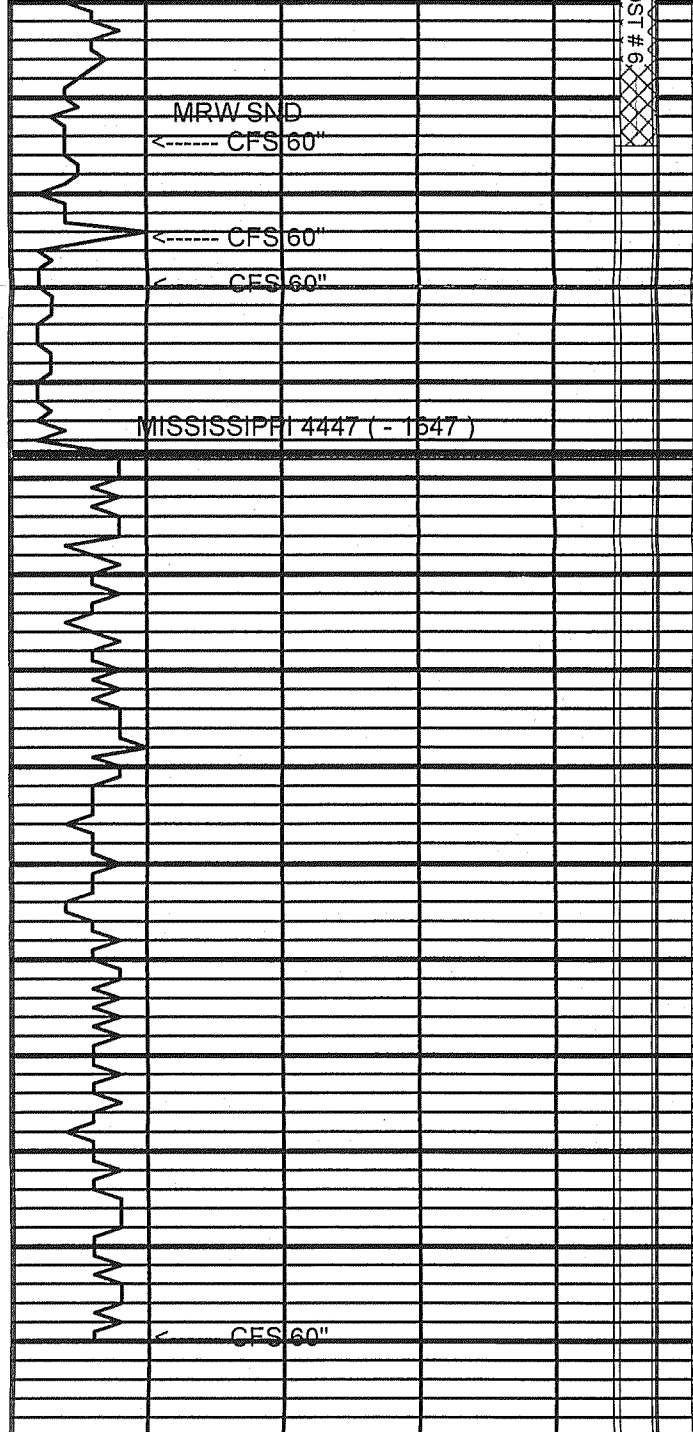
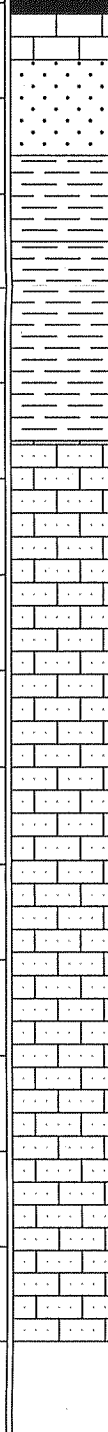
T # 4
DST # 5
DST # 5

4400

4450

4500

4550



FR AMT DNSE LST NO VIS.
 POR. NSO
 SAND: FN GRND WELL
 SORTED SUBANG. - WELL
 ROUNDED TIGHT -
 SUBFRIABLE CLUSTERS
 GSFO GD ODOR ABUND.
 MED - DRK BRN SAT STN FR
 INTRGRAN POR.
 SHALE: GRAY - DRK GRAY -
 VARI COLORED SNDY IN
 PART WITH FR AMT SAND A.
 A. FR INTRGRAN POR.
 SHOW A. A.

LST: WHT - CRM - GRAY
 FXTAL SUBCHKY - DNSE
 ARENACEOUS IN PART SLI
 FOSS RARE OOLITE MINOR
 CHERT NO VIS. POR. NSO

LST: CRM - GRAY FXTAL
 SUBCHKY - DNSE SLI FOSS
 ARENACEOUS CHERTY IN
 PART MINOR OOLITE NO
 VIS. POR. NSO

LST: A. A. FXTAL MOSTLY
 DNSE CHERTY
 ARENACEOUS FOSS IN
 PART RARE OOLITE NO VIS.
 POR. NSO

LST: WHT - CRM - GRAY
 FXTAL MOST DNSE SANDY
 MINOR OOLITE FOSS. NO
 VIS. POR. NSO

LST: WHT - CRM - GRAY
 FXTAL SUBCHKY - DNSE
 ARENACEOUS IN PART SLI
 FOSS RARE OOLITE MINOR
 CHERT NO VIS. POR. NSO

DST # 6 (4390 - 4415)
 MORROW SAND
 REC: 3' MUD VSSO
 IFP: 18 - 18#
 ISIP: 38#
 FFP: 18 - 19#
 FSIP: 33#

POOR SAMPLES
 4440 - 4490

MUD CHECK @ 4450
 VIS: 55
 WT: 9.2

MUD CHECK @ 4540
 VIS: 52
 WT: 9.2

RTD = 4540 LTD = 4545
 DEVIATION 3/4 DEG

MRW SAND
 ← CFS 60"

← CFS 60"

← CFS 60"

MISSISSIPPI 4447 (- 1647)

← CFS 60"

COMMENTS:

**DUE TO NEGATIVE DST RESULTS THIS WELL
 WAS PLUGGED AS DRY & ABANDONED**

KEVIN L. KESSLER