

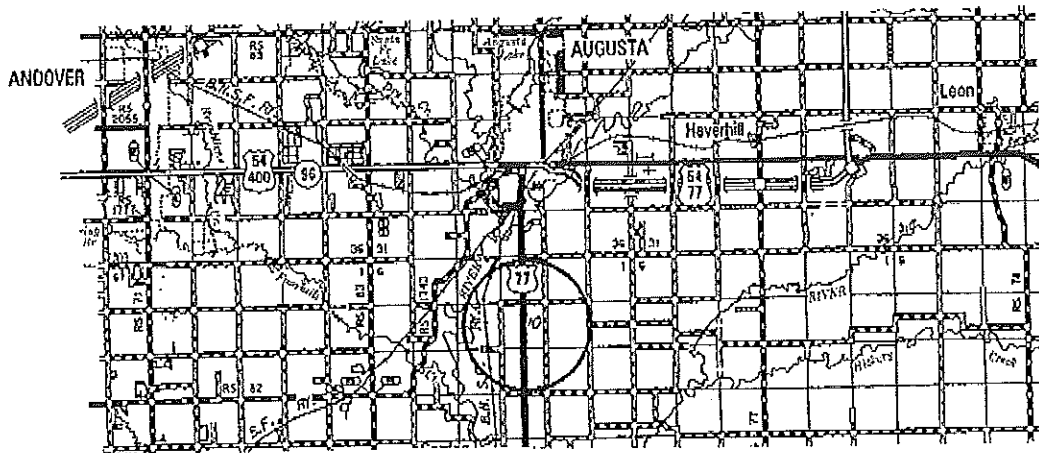
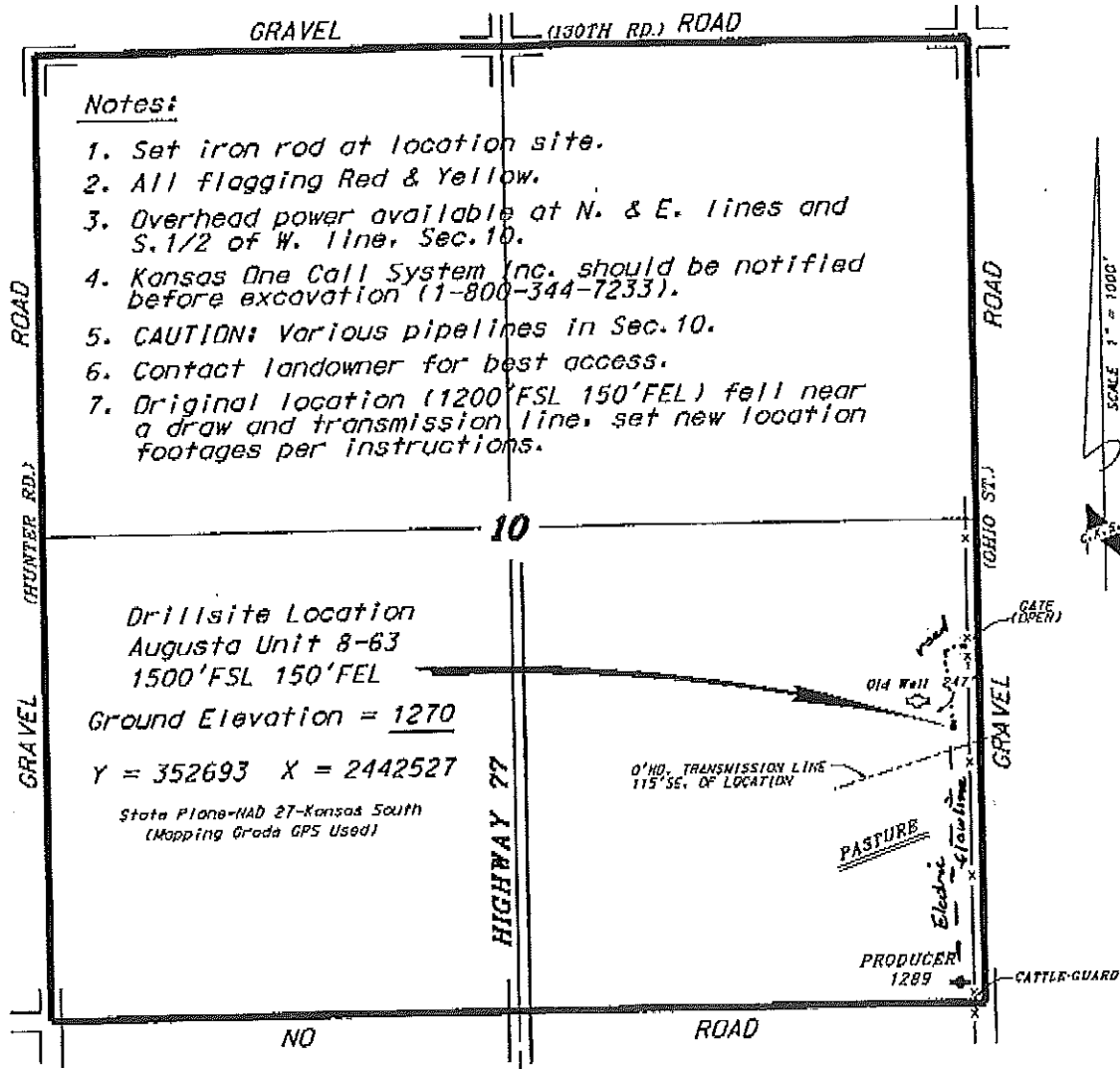
VESS OIL CORPORATION
AUGUSTA LEASE
SE.1/4, SECTION 10, T28S, R4E
BUTLER COUNTY, KANSAS

GRAVEL (130TH RD.) ROAD

Notes:

1. Set iron rod at location site.
2. All flagging Red & Yellow.
3. Overhead power available at N. & E. lines and S. 1/2 of W. line, Sec. 10.
4. Kansas One Call System (inc. should be notified before excavation (1-800-344-7233).
5. CAUTION: Various pipelines in Sec. 10.
6. Contact landowner for best access.
7. Original location (1200' FSL 150' FEL) fell near a draw and transmission line, set new location footages per instructions.

*Ingress and egress to location as shown on this plat is for usage only and may not be legally opened for public use. Contact landowner, tenant and county road department for access.



• Contouring data is based upon the best maps and photographs available to us and upon a regular section of land containing 640 acres.
 • Approximate section lines were determined using the normal standard of care of oilfield surveyors practicing in the state of Kansas; the section corners, which establish the precise section lines, were not necessarily located, and the exact location of the drillsite location in the section is not guaranteed, therefore, the operator assuming this service and accepting this plat and all other parties relying thereon agree to hold Central Kansas Oilfield Services, Inc., its officers and employees harmless from all losses, costs and expenses and said utilities released from any liability from fraudulent or consequential damages.
 • Elevations derived from National Geodetic Vertical Datum.

Date March 26, 2013