



**TRILOBITE TESTING, INC.**

# DRILL STEM TEST REPORT

Shakespeare Oil Co., Inc

**27-13s-31w Gove co**

202 W Main st  
Salem, IL 62881

**Parsons #3-27**

ATTN: Tim Priest

Job Ticket: 46883

**DST#: 1**

Test Start: 2013.02.17 @ 08:31:00

## GENERAL INFORMATION:

Formation: **Lansing " B "**

Deviated: No Whipstock: ft (KB)

Time Tool Opened: 11:01:30

Time Test Ended: 16:34:15

Test Type: Conventional Bottom Hole (Initial)

Tester: Sam Esparza

Unit No: 64

**Interval: 3964.00 ft (KB) To 3990.00 ft (KB) (TVD)**

Total Depth: 3990.00 ft (KB) (TVD)

Hole Diameter: 7.88 inches Hole Condition: Good

Reference Elevations: 2888.00 ft (KB)

2878.00 ft (CF)

KB to GR/CF: 10.00 ft

**Serial #: 8845 Outside**

Press @ Run Depth: 79.80 psig @ 3965.00 ft (KB)

Start Date: 2013.02.17

End Date: 2013.02.17

Start Time: 08:31:05

End Time: 16:34:14

Capacity: 8000.00 psig

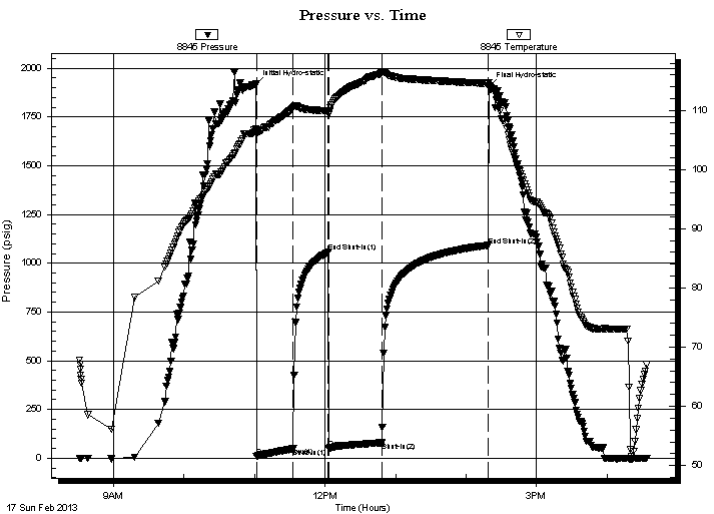
Last Calib.: 2013.02.17

Time On Btm: 2013.02.17 @ 11:01:15

Time Off Btm: 2013.02.17 @ 14:20:00

**TEST COMMENT:** IF: 3 1/2" blow .  
IS: No return.  
FF: 4 1/2" blow .  
FS: 1/4" return.

## PRESSURE SUMMARY



Time (Min.)	Pressure (psig)	Temp (deg F)	Annotation
0	1917.73	106.82	Initial Hydro-static
1	10.67	105.91	Open To Flow (1)
32	48.87	110.42	Shut-In(1)
62	1056.34	109.93	End Shut-In(1)
62	50.97	109.37	Open To Flow (2)
107	79.80	116.36	Shut-In(2)
198	1091.65	114.57	End Shut-In(2)
199	1904.11	113.92	Final Hydro-static

## Recovery

Length (ft)	Description	Volume (bbl)
120.00	MW 20m 80w	0.61
40.00	Mw 40m 60w (Oil puddle on top)	0.56

## Gas Rates

Choke (inches)	Pressure (psig)	Gas Rate (Mcf/d)



**TRILOBITE  
TESTING, INC.**

# DRILL STEM TEST REPORT

**FLUID SUMMARY**

Shakespeare Oil Co., Inc

**27-13s-31w Gove co**

202 W Main st  
Salem, IL 62881

**Parsons #3-27**

Job Ticket: 46883

**DST#: 1**

ATTN: Tim Priest

Test Start: 2013.02.17 @ 08:31:00

## Mud and Cushion Information

Mud Type: Gel Chem

Cushion Type:

Oil API:

deg API

Mud Weight: 9.00 lb/gal

Cushion Length:

ft

Water Salinity:

ppm

Viscosity: 47.00 sec/qt

Cushion Volume:

bbbl

Water Loss: 4.80 in<sup>3</sup>

Gas Cushion Type:

Resistivity: 0.00 ohm.m

Gas Cushion Pressure:

psig

Salinity: 3000.00 ppm

Filter Cake: 1.00 inches

## Recovery Information

Recovery Table

Length ft	Description	Volume bbbl
120.00	MW 20m 80w	0.608
40.00	Mw 40m 60w (Oil puddle on top)	0.561

Total Length: 160.00 ft      Total Volume: 1.169 bbl

Num Fluid Samples: 0

Num Gas Bombs: 0

Serial #:

Laboratory Name:

Laboratory Location:

Recovery Comments: RW: .126 @ 69 degrees= 58,000 ppm

### Pressure vs. Time

