



TRILOBITE TESTING, INC.

DRILL STEM TEST REPORT

Shakespeare Oil Co., Inc

27-13s-31w Gove, KS

202 W Main St
Salem, IL 62881

Parsons #3-27

ATTN: Tim Priest

Job Ticket: 46884

DST#: 2

Test Start: 2013.02.18 @ 03:02:00

GENERAL INFORMATION:

Formation: " D "

Deviated: No Whipstock: ft (KB)

Time Tool Opened: 05:36:15

Time Test Ended: 10:53:45

Test Type: Conventional Bottom Hole (Reset)

Tester: Sam Esparza

Unit No: 64

Interval: 3997.00 ft (KB) To 4023.00 ft (KB) (TVD)

Reference Elevations: 2888.00 ft (KB)

Total Depth: 4023.00 ft (KB) (TVD)

2878.00 ft (CF)

Hole Diameter: 7.88 inches Hole Condition: Good

KB to GR/CF: 10.00 ft

Serial #: 8017 Outside

Press @ Run Depth: 275.25 psig @ 3998.00 ft (KB)

Capacity: 8000.00 psig

Start Date: 2013.02.18

End Date: 2013.02.18

Last Calib.: 2013.02.18

Start Time: 03:02:05

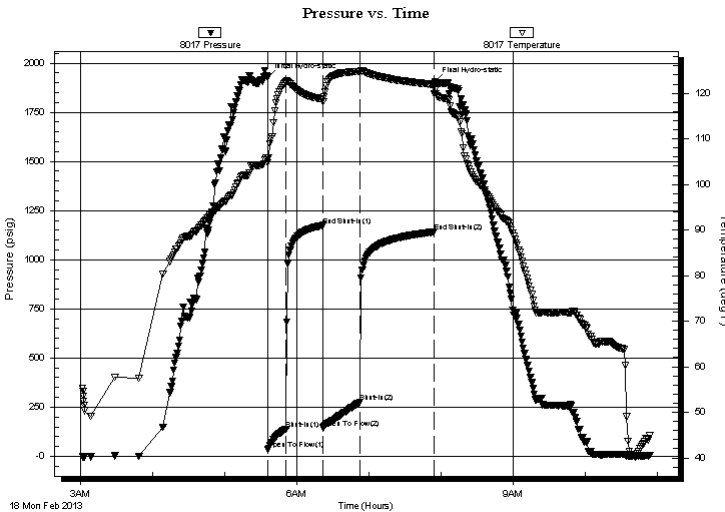
End Time: 10:53:44

Time On Btm: 2013.02.18 @ 05:36:00

Time Off Btm: 2013.02.18 @ 07:55:15

TEST COMMENT: IF: BOB @ 9 min.
IS: No return.
FF: BOB @ 9 min.
FS: No return.

PRESSURE SUMMARY



Time (Min.)	Pressure (psig)	Temp (deg F)	Annotation
0	1928.47	105.87	Initial Hydro-static
1	37.00	104.81	Open To Flow (1)
16	139.03	122.45	Shut-In(1)
46	1174.27	118.69	End Shut-In(1)
47	144.95	118.14	Open To Flow (2)
77	275.25	124.82	Shut-In(2)
139	1141.45	121.92	End Shut-In(2)
140	1904.01	120.68	Final Hydro-static

Recovery

Length (ft)	Description	Volume (bbl)
270.00	MW 5m 95w	2.71
60.00	OMCW 5o 5m 90w	0.84
180.00	MW 20m 80w	2.52
90.00	GOWCM 5g 5o 30w 60m	1.26
1.00	Oil	0.01

Gas Rates

Choke (inches)	Pressure (psig)	Gas Rate (Mcf/d)

* Recovery from multiple tests



**TRILOBITE
TESTING, INC.**

DRILL STEM TEST REPORT

FLUID SUMMARY

Shakespeare Oil Co., Inc

27-13s-31w Gove,KS

202 W Main St
Salem, IL 62881

Parsons #3-27

Job Ticket: 46884

DST#: 2

ATTN: Tim Priest

Test Start: 2013.02.18 @ 03:02:00

Mud and Cushion Information

Mud Type: Gel Chem

Cushion Type:

Oil API:

deg API

Mud Weight: 9.00 lb/gal

Cushion Length:

ft

Water Salinity:

100000 ppm

Viscosity: 46.00 sec/qt

Cushion Volume:

bbbl

Water Loss: 6.40 in³

Gas Cushion Type:

Resistivity: 0.00 ohm.m

Gas Cushion Pressure:

psig

Salinity: 2200.00 ppm

Filter Cake: 1.00 inches

Recovery Information

Recovery Table

Length ft	Description	Volume bbbl
270.00	MW 5m 95w	2.712
60.00	OMCW 5o 5m 90w	0.842
180.00	MW 20m 80w	2.525
90.00	GOWCM 5g 5o 30w 60m	1.262
1.00	Oil	0.014

Total Length: 601.00 ft Total Volume: 7.355 bbl

Num Fluid Samples: 0

Num Gas Bombs: 0

Serial #:

Laboratory Name:

Laboratory Location:

Recovery Comments: RW: .120 @ 42 degrees= 100,000 ppm

Pressure vs. Time

