



**TRILOBITE  
TESTING, INC.**

# DRILL STEM TEST REPORT

Shakespeare Oil Co., Inc

**27-13s-31w Gove co**

202 W Main st  
Salem, IL 62881

**Parsons #3-27**

Job Ticket: 46886

**DST#: 4**

ATTN: Tim Priest

Test Start: 2013.02.19 @ 19:15:00

## GENERAL INFORMATION:

Formation: "H-I"

Deviated: No Whipstock: ft (KB)

Time Tool Opened: 21:44:00

Time Test Ended: 05:02:00

Test Type: Conventional Bottom Hole (Reset)

Tester: Sam Esparza

Unit No: 64

**Interval: 4099.00 ft (KB) To 4155.00 ft (KB) (TVD)**

Reference Elevations: 2888.00 ft (KB)

Total Depth: 4155.00 ft (KB) (TVD)

2878.00 ft (CF)

Hole Diameter: 7.88 inches Hole Condition: Good

KB to GR/CF: 10.00 ft

**Serial #: 8845 Outside**

Press @ Run Depth: 557.79 psig @ 4100.00 ft (KB)

Capacity: 8000.00 psig

Start Date: 2013.02.19

End Date:

2013.02.20

Last Calib.:

2013.02.20

Start Time: 19:15:05

End Time:

05:02:00

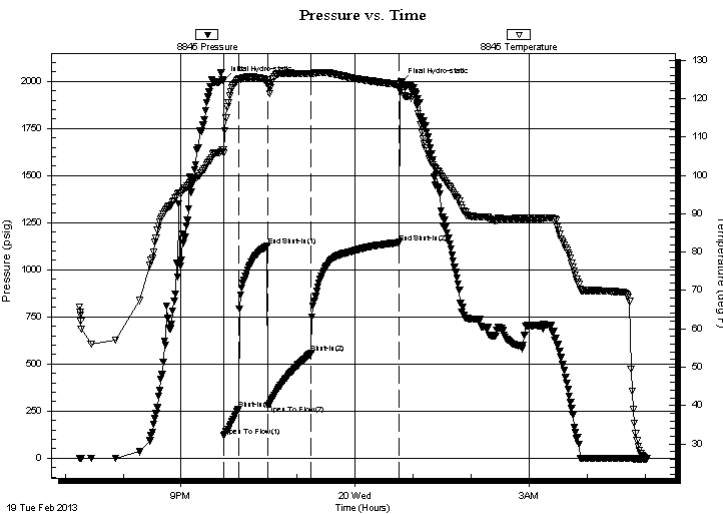
Time On Btm:

2013.02.19 @ 21:43:45

Time Off Btm:

2013.02.20 @ 00:47:15

**TEST COMMENT:** IF: BOB @ 1 1/2 min.  
IS: BOB return @ 14 min.  
FF: BOB Immediately.  
FS: BOB return @ 26 min.



## PRESSURE SUMMARY

Time (Min.)	Pressure (psig)	Temp (deg F)	Annotation
0	2004.74	106.61	Initial Hydro-static
1	118.49	105.73	Open To Flow (1)
16	259.89	124.94	Shut-In(1)
46	1126.41	124.84	End Shut-In(1)
47	279.88	124.00	Open To Flow (2)
91	557.79	126.46	Shut-In(2)
182	1144.76	123.71	End Shut-In(2)
184	1995.22	123.11	Final Hydro-static

## Recovery

Length (ft)	Description	Volume (bbl)
1670.00	GO 30g 70o	22.35
0.00	2330' GIP	0.00

## Gas Rates

	Choke (inches)	Pressure (psig)	Gas Rate (Mcf/d)

\* Recovery from multiple tests



**TRILOBITE  
TESTING, INC.**

# DRILL STEM TEST REPORT

**FLUID SUMMARY**

Shakespeare Oil Co., Inc

**27-13s-31w Gove co**

202 W Main st  
Salem, IL 62881

**Parsons #3-27**

Job Ticket: 46886

**DST#: 4**

ATTN: Tim Priest

Test Start: 2013.02.19 @ 19:15:00

## Mud and Cushion Information

Mud Type: Gel Chem

Cushion Type:

Oil API:

40 deg API

Mud Weight: 9.00 lb/gal

Cushion Length:

ft

Water Salinity:

ppm

Viscosity: 59.00 sec/qt

Cushion Volume:

bbbl

Water Loss: 6.40 in<sup>3</sup>

Gas Cushion Type:

Resistivity: 0.00 ohm.m

Gas Cushion Pressure:

psig

Salinity: 4000.00 ppm

Filter Cake: 1.00 inches

## Recovery Information

Recovery Table

Length ft	Description	Volume bbl
1670.00	GO 30g 70o	22.351
0.00	2330' GIP	0.000

Total Length: 1670.00 ft      Total Volume: 22.351 bbl

Num Fluid Samples: 0

Num Gas Bombs: 0

Serial #:

Laboratory Name:

Laboratory Location:

Recovery Comments: Gravity: 37 @ 30 degrees= 40 API

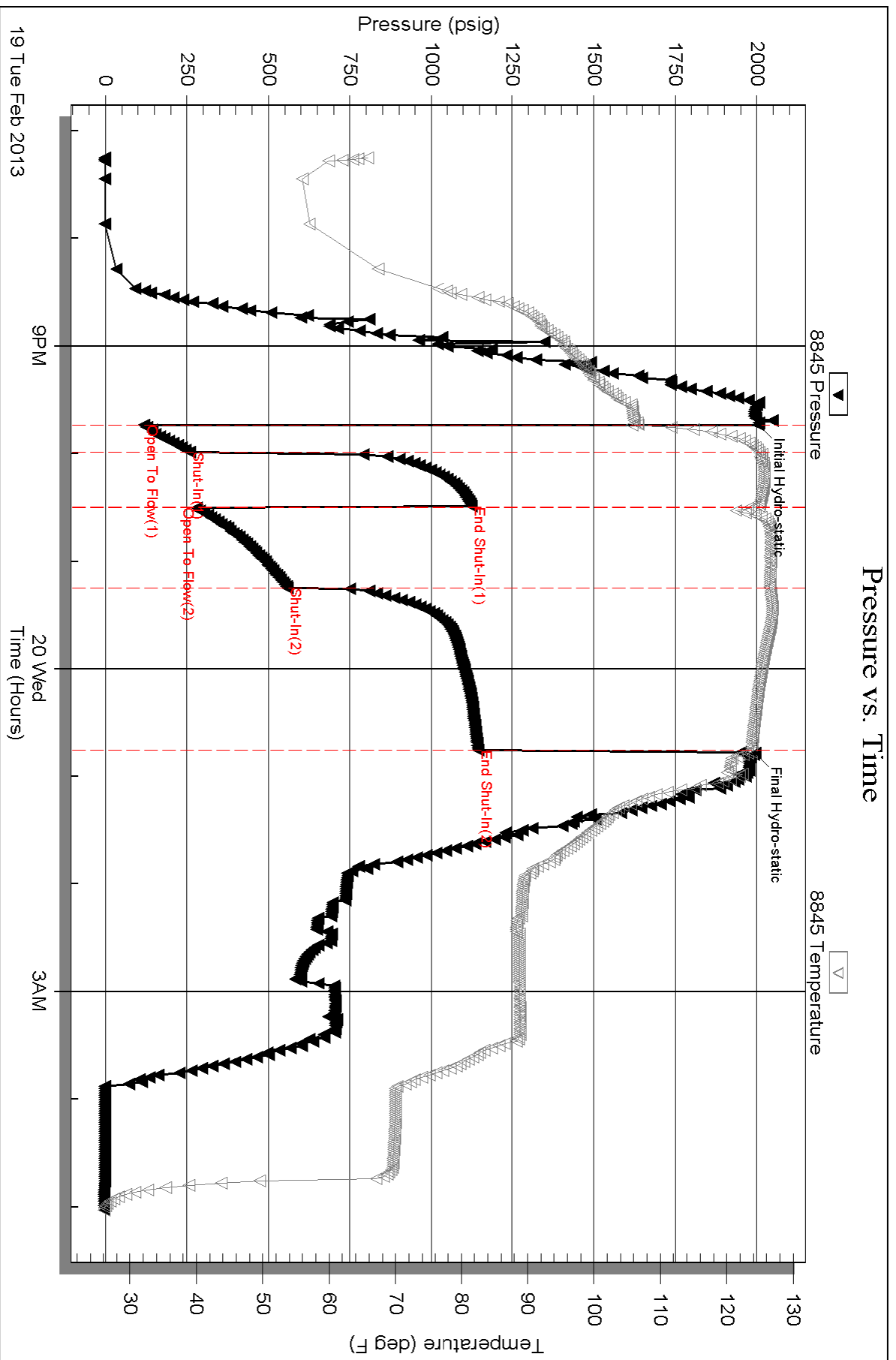
Serial #: 8845

Outside Shakespeare Oil Co., Inc

Parsons #3-27

DST Test Number: 4

### Pressure vs. Time



Triobite Testing, Inc

Ref. No: 46886

Printed: 2013.02.20 @ 08:13:08