



**TRILOBITE
TESTING, INC.**

DRILL STEM TEST REPORT

Shakespeare Oil Co., Inc

27-13s-31w Gove co

202 W Main st
Salem, IL 62881

Parsons #3-27

Job Ticket: 46888

DST#: 6

ATTN: Tim Priest

Test Start: 2013.02.24 @ 11:36:00

GENERAL INFORMATION:

Formation: **Myric Station**

Deviated: No Whipstock: ft (KB)

Time Tool Opened: 14:13:45

Time Test Ended: 19:25:30

Test Type: Conventional Bottom Hole (Reset)

Tester: Sam Esparza

Unit No: 64

Interval: 4398.00 ft (KB) To 4435.00 ft (KB) (TVD)

Reference Elevations: 2888.00 ft (KB)

Total Depth: 4435.00 ft (KB) (TVD)

2878.00 ft (CF)

Hole Diameter: 7.88 inches Hole Condition: Good

KB to GR/CF: 10.00 ft

Serial #: 8845 Outside

Press @ Run Depth: 11.60 psig @ 4399.00 ft (KB)

Capacity: 8000.00 psig

Start Date: 2013.02.24

End Date:

2013.02.24

Last Calib.:

2013.02.24

Start Time: 11:36:05

End Time:

19:25:29

Time On Btm:

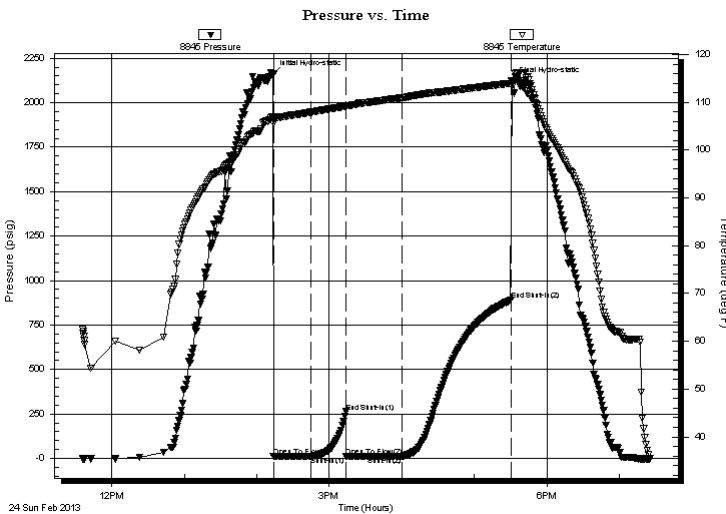
2013.02.24 @ 14:13:30

Time Off Btm:

2013.02.24 @ 17:30:45

TEST COMMENT: IF: No blow. Line was froze thawed out.
IS: Weak surface return.
FF: Weak surface blow died @ 40 min.
FS: No return.

PRESSURE SUMMARY



Time (Min.)	Pressure (psig)	Temp (deg F)	Annotation
0	2159.49	106.87	Initial Hydro-static
1	9.51	105.60	Open To Flow (1)
31	10.64	107.92	Shut-In(1)
61	261.39	109.22	End Shut-In(1)
61	11.48	109.10	Open To Flow (2)
107	11.60	110.92	Shut-In(2)
197	889.65	113.99	End Shut-In(2)
198	2117.14	114.49	Final Hydro-static

Recovery

Length (ft)	Description	Volume (bbl)
5.00	Mud 100m (Oil spots)	0.02

Gas Rates

Choke (inches)	Pressure (psig)	Gas Rate (Mcf/d)

* Recovery from multiple tests



**TRILOBITE
TESTING, INC.**

DRILL STEM TEST REPORT

FLUID SUMMARY

Shakespeare Oil Co., Inc

27-13s-31w Gove co

202 W Main st
Salem, IL 62881

Parsons #3-27

Job Ticket: 46888

DST#: 6

ATTN: Tim Priest

Test Start: 2013.02.24 @ 11:36:00

Mud and Cushion Information

Mud Type: Gel Chem

Cushion Type:

Oil API:

deg API

Mud Weight: 9.00 lb/gal

Cushion Length:

ft

Water Salinity:

ppm

Viscosity: 50.00 sec/qt

Cushion Volume:

bbbl

Water Loss: 7.20 in³

Gas Cushion Type:

Resistivity: 0.00 ohm.m

Gas Cushion Pressure:

psig

Salinity: 4000.00 ppm

Filter Cake: 1.00 inches

Recovery Information

Recovery Table

Length ft	Description	Volume bbl
5.00	Mud 100m (Oil spots)	0.025

Total Length: 5.00 ft Total Volume: 0.025 bbl

Num Fluid Samples: 0

Num Gas Bombs: 0

Serial #:

Laboratory Name:

Laboratory Location:

Recovery Comments:

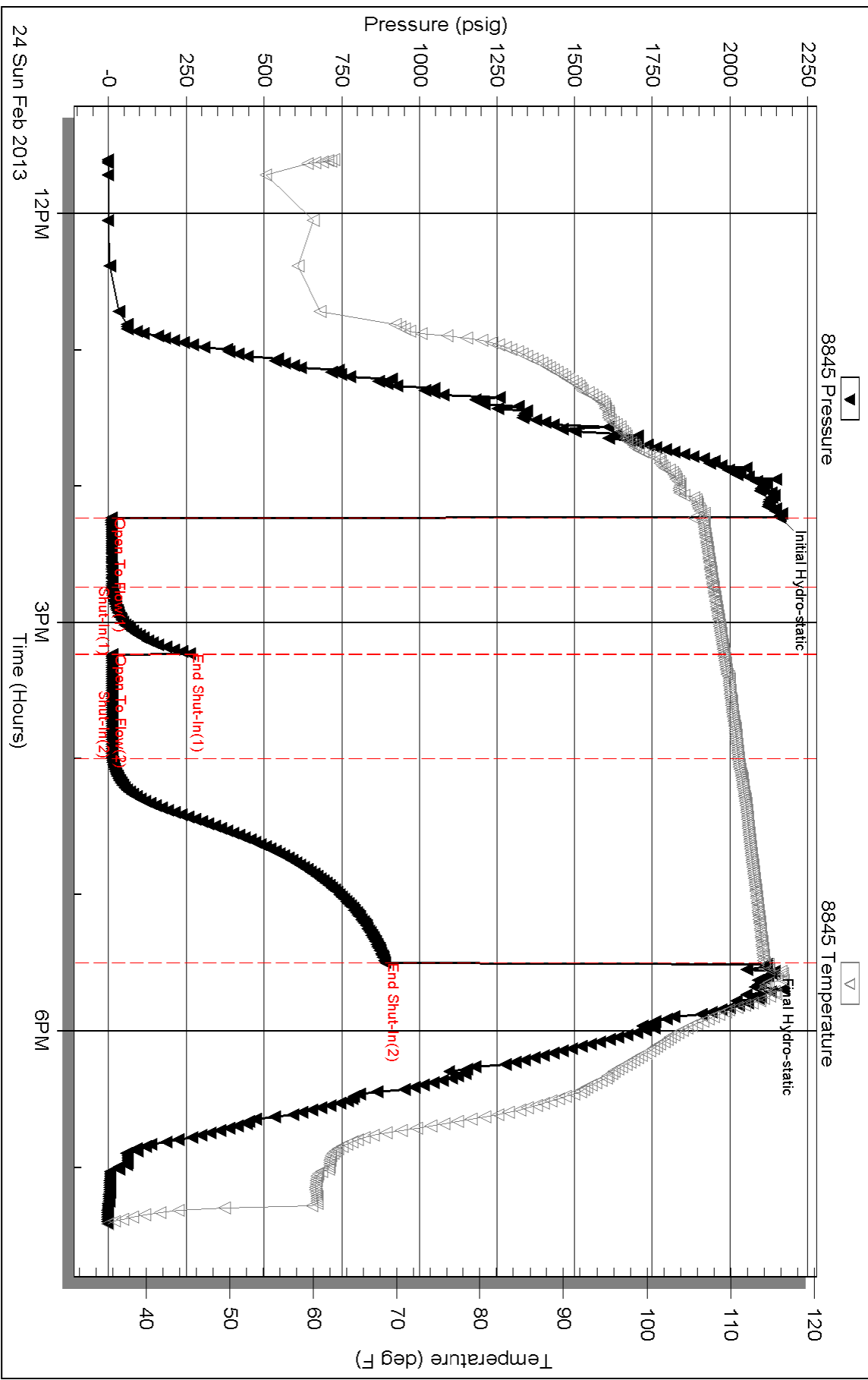
Serial #: 8845

Outside Shakespeare Oil Co., Inc

Parsons #3-27

DST Test Number: 6

Pressure vs. Time



Triobite Testing, Inc

Ref. No: 46888

Printed: 2013.02.24 @ 22:11:57