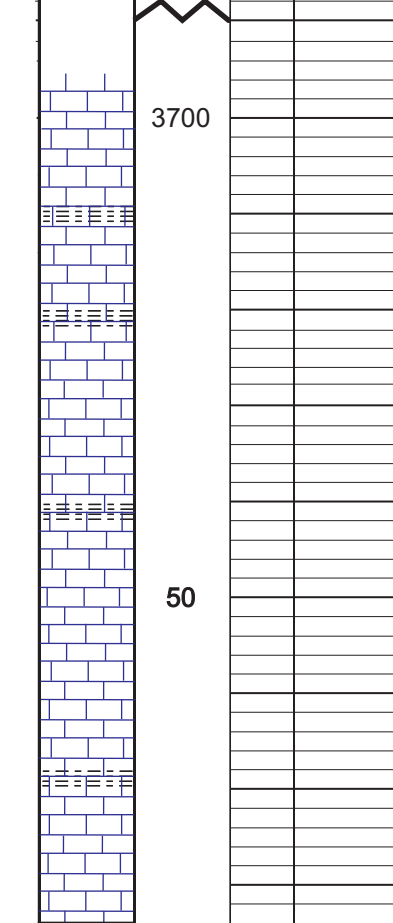


GEOLOGIST'S REPORT
DRILLING TIME AND SAMPLE LOG

COMPANY **SHAKESPARE OIL CO.** ELEVATIONS
 LEASE **Parsons 3-27** KB 2888'
 FIELD **Antelope Ridge** DF _____
 LOCATION **3351 FNL, 2297 FWL** GL 2878'
 SEC **27** T15SP **13S** R0E **31W**
 COUNTY **Grave** STATE **Kansas** Measurements Are All From **KB**
 CONTRACTOR **HD Drilling Rig #2**
 SPUD **2-11-13** COMP **2-26-13**
 RTD **4630'** LTD **4663'** CASING CONDUCTION **N/A**
 MUD UP **3500'** TYPE MUD **Chemical** SURFACE **8-5/8" @ 225'**
 PRODUCTION **5-1/2" @ 4630'**
 DRILLING TIME KEPT FROM **3700'** to RTD
 SAMPLES SAVED FROM **3700'** to RTD
 GEOLOGICAL SUPERVISION FROM **3800'** to RTD
 GEOLOGIST ON WELL: **Tim Priest** By: **Weatherford**

FORMATION TOPS

FORMATION TOPS	ELECTRIC LOG	SAMPLE
Anhydrite	2363 (+525)	2365 (+523)
Sandstone	3898 (-1010)	3898 (-1010)
Heebner Shale	3941 (-1053)	3943 (-1055)
Amstung	4180 (-1292)	4178 (-1290)
SARK	4261 (-1373)	4258 (-1370)
BRC	4436 (-1548)	4434 (-1546)
Fort Scott	4463 (-1575)	4464 (-1576)
Cherokee Shale	4463 (-1575)	4464 (-1576)
Mississippian	4531 (-1663)	4530 (-1662)



REMARKS Due to the results of DST #4 it was decided to set production casing to further test the well.

Respectfully Submitted,

API #15-063-22074-00-00 Tim Priest
 Petroleum Geologist
