

OPERATOR

Company: SANDLIN OIL CORPORATION
 Address: 621 17TH ST
 SUITE 2055
 DENVER, CO 80923
 Contact Geologist: GARY SANDLIN
 Contact Phone Nbr: (303) 292-3313
 Well Name: BEAN-O'BRATE #1
 Location: NE NW NW NW Sec. 7 - 9S - 24W API: 15-065-23898-00-00
 Pool: HOLLEY
 State: KANSAS Country: USA

Scale 1:240 Imperial

Well Name: BEAN-O'BRATE #1
 Surface Location: NE NW NW NW Sec. 7 - 9S - 24W
 Bottom Location:
 API: 15-065-23898-00-00
 License Number: 6677
 Spud Date: 3/25/2013 Time: 3:00 PM
 Region: GRAHAM COUNTY
 Drilling Completed: 3/30/2013 Time: 11:55 PM
 Surface Coordinates: 85' FNL & 650' FWL
 Bottom Hole Coordinates:
 Ground Elevation: 2510.00ft
 K.B. Elevation: 2517.00ft
 Logged Interval: 3550.00ft To: 4121.00ft
 Total Depth: 4121.00ft
 Formation: LANSING-KANSAS CITY
 Drilling Fluid Type: FRESH WATER / CHEMICAL GEL

SURFACE CO-ORDINATES

Well Type: Vertical
 Longitude: -100.0485309 Latitude: 39.2911598
 N/S Co-ord: 85' FNL
 E/W Co-ord: 650' FWL

LOGGED BY



Company: SOLUTIONS CONSULTING, INC.
 Address: 108 W 35TH
 HAYS, KS 67601
 Phone Nbr: (785)259-3737
 Logged By: Geologist Name: JEFF LAWLER

CONTRACTOR

Contractor: ROYAL DRILLING, INC
 Rig #: 1
 Rig Type: MUD ROTARY
 Spud Date: 3/25/2013 Time: 3:00 PM
 TD Date: 3/30/2013 Time: 11:55 PM
 Rig Release: 3/31/2013 Time: 12:00 PM

ELEVATIONS

K.B. Elevation: 2517.00ft Ground Elevation: 2510.00ft
 K.B. to Ground: 7.00ft

NOTES

THE BEAN-O'BRATE #1 WAS DRILLED OFF A SEISMIC HIGH. DUE TO LOW STRUCTURAL POSITION, LACK OF ECONOMICAL RECOVERY ON DRILL STEM TEST #1, AND LOG ANALYSIS DECISION WAS MADE BY THE OPERATOR TO PLUG AND ABANDON.

RESPECTFULLY SUBMITTED,
 JEFF LAWLER

WELL COMPARISON SHEET

FORMATION	BEAN-O'BRATE #1				NE NW NW NW 25				2488				2475				2491							
	LOG TOPS		SAMPLE TOPS		COMP. CARD		LOG		SMPL.		COMP. CARD		LOG		SMPL.		COMP. CARD		LOG		SMPL.			
	DEPTH	DATUM	DEPTH	DATUM	DEPTH	DATUM	CORR.	CORR.	DEPTH	DATUM	CORR.	CORR.	DEPTH	DATUM	CORR.	CORR.	DEPTH	DATUM	CORR.	CORR.	DEPTH	DATUM	CORR.	CORR.
ANHYDRITE TOP	2206	311	2206	311	2211	303	+ 8	+ 8	2175	313	- 2	- 2	2156	319	- 8	- 8	2185	306	+ 5	+ 5				
BASE	2242	275	2249	268	2256	258	+ 17	+ 10	2211	277	- 2	- 9	2190	285	- 10	- 17								
TOPEKA	3603	-1086			3587	-1073	- 13		3568	-1080	- 6													
HEEBNER SHALE	3819	-1302	3814	-1297	3804	-1290	- 12	- 7	3785	-1297	- 5	+ 0	3777	-1302	+ 0	+ 5	3794	-1303	+ 1	+ 6				
TORONTO	3845	-1328	3840	-1323	3829	-1315	- 13	- 8	3812	-1324	- 4	+ 1					3816	-1325	- 3	+ 2				
LKC	3862	-1345	3854	-1337	3841	-1327	- 18	- 10	3826	-1338	- 7	+ 1	3821	-1346	+ 1	+ 9	3833	-1342	- 3	+ 5				
BKC	4083	-1566	4082	-1565	4064	-1550	- 16	- 15	4052	-1564	- 2	- 1	4044	-1569	+ 3	+ 4								
RTD			4121	-1604	4090	-1576		- 28	4056	-1568		- 36	4071	-1596		- 8	4036	-1545		- 59				
LTD	4121	-1604			4088	-1574	- 30																	

DST #1 LKC C-F 3870' - 3940'

DRILL STEM TEST REPORT

Sandlin Oil Corporation
 621 17th Ste 2055
 Denver Co 80293 + 2001
 ATTN: Gary Sandlin

7-9s-24w Graham
Bean O'Brate
 Job Ticket: 48515 DST#: 1
 Test Start: 2013.03.29 @ 15:15:03

GENERAL INFORMATION:

Formation: LKC-C-F
 Deviated: No Whipstock: ft (KB)
 Time Tool Opened: 18:42:13
 Time Test Ended: 21:30:03
 Interval: 3870.00 ft (KB) To 3940.00 ft (KB) (TVDD)
 Total Depth: 3940.00 ft (KB) (TVDD)
 Test Type: Conventional Bottom Hole (Initial)
 Tester: Jeff Brown
 Unit No: 67
 Reference Elevations: 2517.00 ft (KB)
 2510.00 ft (CF)

Hole Diameter: 7.88 inches Hole Condition: Good KB to GR/CF: 7.00 ft

Serial #: 6625 Outside

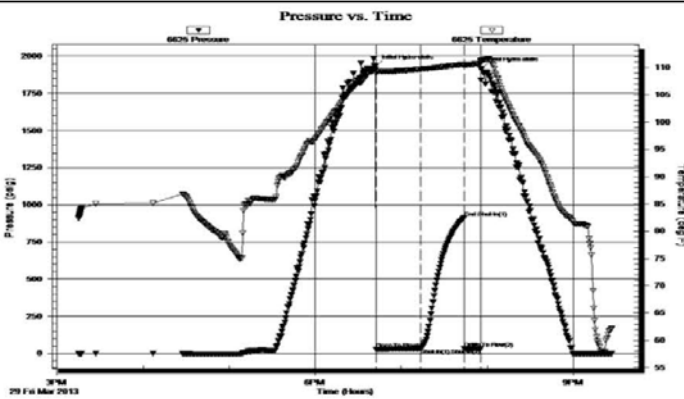
Press@RunDepth: 34.50 psig @ 3908.00 ft (KB) Capacity: 8000.00 psig

Start Date: 2013.03.29 End Date: 2013.03.29 Last Calib.: 2013.03.29

Start Time: 15:15:04 End Time: 21:27:03 Time On Btm: 2013.03.29 @ 18:42:03

Time Off Btm: 2013.03.29 @ 19:55:33

TEST COMMENT: IFP=Weak surface blow died out in 7 min
 ISI=Dead no blow back
 FFP=Weak surface blow died out in 1 min-Flush tool surged then died

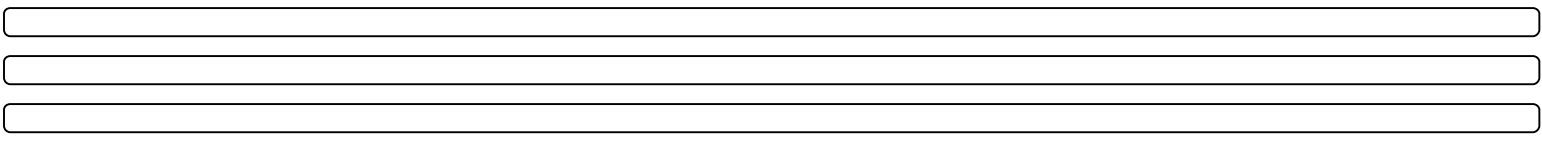


PRESSURE SUMMARY			
Time (Min.)	Pressure (psig)	Temp (deg F)	Annotation
0	1932.17	109.64	Initial Hydro-static
1	30.01	108.85	Open To Flow(1)
32	34.50	109.67	Shut-In(1)
62	911.92	110.58	End Shut-In(1)
62	32.74	110.36	Open To Flow(2)
74	31.86	110.74	Shut-In(2)
74	1915.31	111.28	Final Hydro-static

Recovery		
Length(ft)	Description	Volume(bbl)
10.00	Mud with a scum of oil	0.14

Gas Rates			
	Choke(inches)	Pressure (psig)	Gas Rate(Mcf/d)

Trilobite Testing, Inc Ref. No: 48515 Printed: 2013.03.30 @ 00:00:34

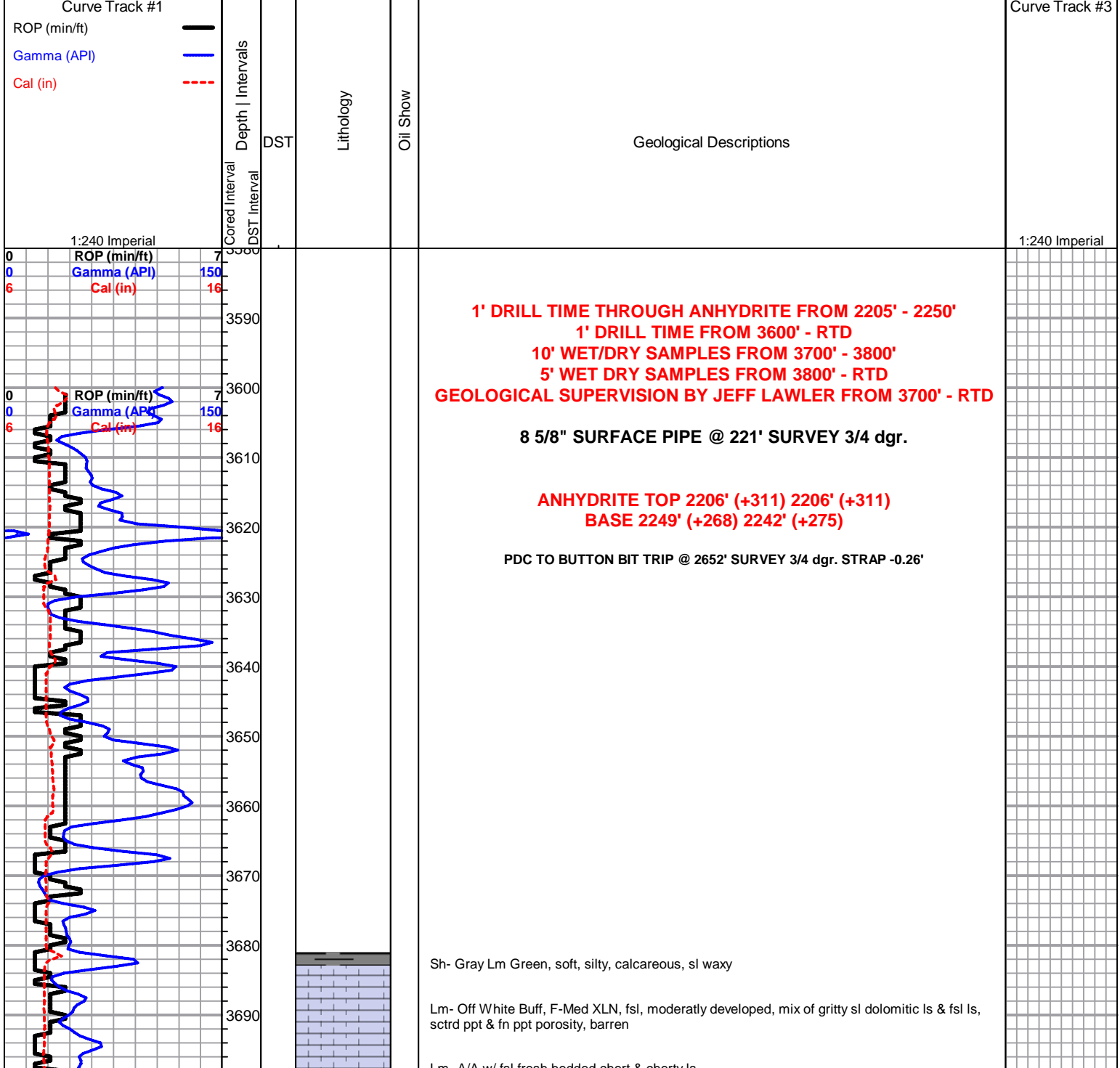


ROCK TYPES		
	Cht	shale, gry
	Lmst fw7>	Carbon Sh
	shale, red	

ACCESSORIES	
	STRINGER
	Chert

OTHER SYMBOLS	
	DST
	DST Int
	DST alt

Printed by GEOstrip VC Striplog version 4.0.7.0 (www.grsi.ca)



1' DRILL TIME THROUGH ANHYDRITE FROM 2205' - 2250'
1' DRILL TIME FROM 3600' - RTD
10' WET/DRY SAMPLES FROM 3700' - 3800'
5' WET DRY SAMPLES FROM 3800' - RTD
GEOLOGICAL SUPERVISION BY JEFF LAWLER FROM 3700' - RTD

8 5/8" SURFACE PIPE @ 221' SURVEY 3/4 dgr.

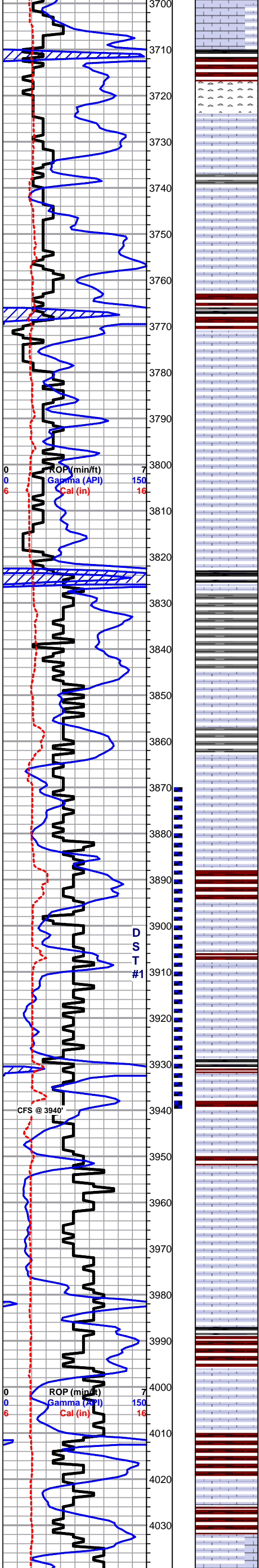
ANHYDRITE TOP 2206' (+311) 2206' (+311)
BASE 2249' (+268) 2242' (+275)

PDC TO BUTTON BIT TRIP @ 2652' SURVEY 3/4 dgr. STRAP -0.26'

Sh- Gray Lm Green, soft, silty, calcareous, sl waxy

Lm- Off White Buff, F-Med XLN, fsl, moderately developed, mix of gritty sl dolomitic ls & fsl ls, scrd ppt & fn ppt porosity, barren

Lm- A/A w/ fsl fresh bedded chert & cherty ls



Sh- Black Brick Red Brown, fissile, carbonaceous, blocky & dense, gritty & earthy

Chert- Off White Golden Brown, fsl fresh bedded, no vis. porosity

Lm- Tan, FXLN, fsl, sl trashy, high-energy mix, gritty sl dolomitic w/ sctrd XLN porosity

Sh- Gray Brown Lm Green, silty & calcareous, sl sandy & unconsolidated, brwn wash

Lm- White Off White, Med XLN, moderately developed dolomitic ls, few chips of oomoldic w/ sctrd vuggy intermoldic porosity, partial skeletal dissolution, poor intervugular connectivity, barren

Lm- White Off White, FXLN, fsl, well cemented, poorly developed, much soft white chalk

Sh- Black Brick Red Brown Lm Green, fissile, carbonaceous, gritty & soft, gritty & earthy, sl waxy & dense

Lm- Cream Off White, FXLN, dense, oomoldic, poor skeletal dissolution, poor intervugular connectivity, barren

Lm- Buff Cream, Crypt-FXLN, dense mix, all well cemented, mix of fsl chert, cherty ls & few chips of algal ls, all w/ no-minimal vis. porosity

Lm- A/A, more fsl gritty dolomitic cherty ls, much soft white chalk

Lm/Dolomite- Tan Semi-Translucent, mix of high-energy mix w/ fsl fragments & sub-sucrosic poorly developed dolomite w/ consistant XLN porosity, barren

Lm- Lt Gray Buff, FXLN, weathered fsl cherty ls, sctrd micro XLN & XLN porosity

Lm- Lt Gray, VF-FXLN, dense, weathered cherty ls, no vis. porosity

HEEBNER 3814' (-1297) E-LOG 3819' (-1302) Sh- Black Gray Maroon, fissile, slaty, carbonaceous, silty & calcareous, gritty & earthy

Sh- Gray Lm Green, silty & calcareous, sandy lime, gummy argillaceous clumps

TORONTO 3840' (-1323) E-LOG 3845' (-1328) Lm- Tan Buff, VF-FXLN, dense, well cemented, sl fsl, poorly developed w/ minimal vis. porosity, few chips of salmon fresh bedded chert

Sh- Gray Lm Green, gummy argillaceous clumps & sl waxy dense chips

LKC 3854' (-1337) E-LOG 3862' (-1345) Lm- Cream Off White, VF-FXLN, sl fsl, dense, well cemented, poorly developed w/ minimal vis. porosity, some w/ sctrd micro XLN, barren, few chips of fsl fresh bedded chert

Lm- Ivory, Crypto-FXLN, dense, vry sl fsl mix, vry poorly developed, most w/ no vis. grains/porosity, few vry sl oolitic w/ no vis. interoolite porosity, 1-2 chips w/ siliceous cementation, barren

Sh- Maroon, gritty & earthy, red wash

Lm- Buff Off White, F-Med XLN, fsl & oolitic, moderately developed w/ sctrd fn ppt & ppt interoolitic porosity, loosely to well cemented, SCTRDRK STN, VRY SL SFO, GSY SHEEN, NO ODR, sl chalky in part

Lm/Chert- Off White Semi-Translucent Golden Brown, dense tight mix of fresh bedded angular chert & sl cherty ls, all w/ minimal vis. porosity, well cemented

Lm- Ivory, VFXLN & Vf Grn, dense tight, loosely cemented & crumbley, chalky in part, vry clean & barren

Lm- dense tight mix, mostly FXLN, some Vf Grn, algal ls, minimal vis. porosity

Sh- Black Maroon, soft, fissile, carbonaceous, gritty & earthy

Lm- Cream Off White, FXLN, sl fsl, poorly developed, sctrd micro XLN porosity, few chips sl dolomitic, all barren

Lm/Chert- Cream Off White, F-Med XLN, oolitic/sl oomoldic, sl skeletal dissolution, moderately-well developed w/ ppt interoolite & inter vugular porosity, sctrd recrystallization w/in porosity, few chips of vry well cemented cherty ls w/ sctrd fn ppt porosity, SCTRDRK STN, SL SHW GSY FO, PR-FR ODR, chips of weathered chert w/o vis. porosity

Lm- Ivory, Fn Grn & FXLN, loosely cemented & crumbley mix, poorly developed, sl fsl, no to minimal vis. porosity, vry clean & barren

Lm/Chert- Ivory, Crypto-VFXLN, dense, semi-brittle mix of cherty ls & fresh bedded chert, no vis. porosity

Lm- Ivory, VF-FXLN, dense, loosely cemented & crumbley, minimal vis. porosity, vry clean & barren

Sh- Black Maroon Gray, fissile, dense, carbonaceous, gritty & earthy, soft, some sl unconsolidated

Lm- Ivory, VF-FXLN, dense, loosely cemented & crumbley, vry clean & barren

Sh- Brick Red Maroon Brown, gritty & earthy, red wash, sl sandy lime

Lm- Cream Tan, FXLN, dense, most loosely cemented & crumbley, mostly consistant vry fn ppt porosity throughout, DENSE LT STN, SL FLAKEY, VRY SL SFO, PR FNT ODR

Lm- White, VFXLN, dense, well cemented, poorly developed w/ dense sctrd vry fn ppt porosity, chalky in part & loosely cemented & crumbley, DRK STN, NO SFO, ODR A/A

Sh- Red Maroon, red wash

Lm- Ivory Off White, FXLN, dense, fsl & sl oolitic, sl developed w/ sctrd fn ppt & XLN porosity, loosely to well cemented & brittle, WK SPOTTY STN, NO SFO, NO ODR

SHORT TRIP
DST #1
LKC C-F
3870' - 3940'

