



**TRILOBITE TESTING, INC.**

# DRILL STEM TEST REPORT

Strata Exploration Inc.

**14-27-18w Kiowa Ks.**

P.O.Box 401  
Fairfield Il.62837

**Bordewick #1-14**

Job Ticket: 50832

**DST#: 1**

ATTN: Jon Christensen

Test Start: 2013.01.23 @ 17:15:17

## GENERAL INFORMATION:

Formation: **Lans. A**

Deviated: No Whipstock: ft (KB)

Time Tool Opened: 19:12:02

Time Test Ended: 00:43:40

Test Type: Conventional Bottom Hole (Initial)

Tester: Gary Pevoteaux

Unit No: 56

**Interval: 4151.00 ft (KB) To 4168.00 ft (KB) (TVD)**

Reference Elevations: 2172.00 ft (KB)

Total Depth: 4168.00 ft (KB) (TVD)

2161.00 ft (CF)

Hole Diameter: 7.88 inches Hole Condition: Fair

KB to GR/CF: 11.00 ft

**Serial #: 8352 Outside**

Press @RunDepth: 26.11 psig @ 4152.00 ft (KB)

Capacity: 8000.00 psig

Start Date: 2013.01.23

End Date:

2013.01.24

Last Calib.: 2013.01.24

Start Time: 17:15:22

End Time:

00:43:39

Time On Btm: 2013.01.23 @ 19:10:17

Time Off Btm: 2013.01.23 @ 22:33:32

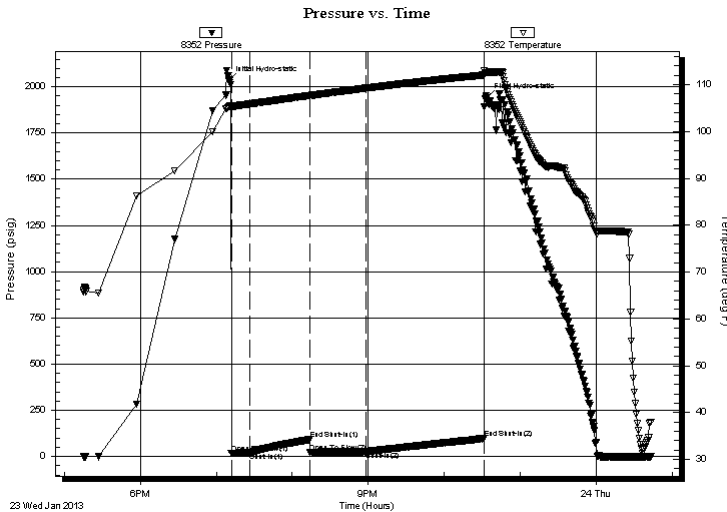
TEST COMMENT: IF:Fair blow . 4 - 6".

IS:No blow .

FF:Weak blow . 2 - 3".

FS:No blow .

## PRESSURE SUMMARY



Time (Min.)	Pressure (psig)	Temp (deg F)	Annotation
0	2032.34	105.36	Initial Hydro-static
2	16.46	105.14	Open To Flow (1)
17	20.77	105.88	Shut-In(1)
64	91.30	107.68	End Shut-In(1)
64	20.92	107.67	Open To Flow (2)
109	26.11	109.25	Shut-In(2)
202	98.08	112.04	End Shut-In(2)
204	1941.11	112.52	Final Hydro-static

## Recovery

Length (ft)	Description	Volume (bbl)
15.00	OCM8%o 92%m /Clean oil @ top of tool	0.07
0.00	165 ft.of GIP	0.00

## Gas Rates

Choke (inches)	Pressure (psig)	Gas Rate (Mcf/d)



**TRILOBITE  
TESTING, INC.**

# DRILL STEM TEST REPORT

**FLUID SUMMARY**

Strata Exploration Inc.

**14-27-18w Kiowa Ks.**

P.O.Box 401  
Fairfield Il.62837

**Bordewick #1-14**

Job Ticket: 50832

**DST#: 1**

ATTN: Jon Christensen

Test Start: 2013.01.23 @ 17:15:17

## Mud and Cushion Information

Mud Type: Gel Chem

Cushion Type:

Oil API:

deg API

Mud Weight: 10.00 lb/gal

Cushion Length:

ft

Water Salinity:

6000 ppm

Viscosity: 51.00 sec/qt

Cushion Volume:

bbbl

Water Loss: 10.79 in<sup>3</sup>

Gas Cushion Type:

Resistivity: 0.00 ohm.m

Gas Cushion Pressure:

psig

Salinity: 6000.00 ppm

Filter Cake: 0.20 inches

## Recovery Information

Recovery Table

Length ft	Description	Volume bbbl
15.00	OCM8%o 92%m /Clean oil @ top of tool	0.074
0.00	165 ft.of GIP	0.000

Total Length: 15.00 ft      Total Volume: 0.074 bbl

Num Fluid Samples: 0

Num Gas Bombs: 0

Serial #: none

Laboratory Name:

Laboratory Location:

Recovery Comments:

