



**TRILOBITE TESTING, INC.**

# DRILL STEM TEST REPORT

Strata Exploration Inc.

**14-27-18w Kiowa Ks.**

P.O.Box 401  
Fairfield Il.62837

**Bordewick #1-14**

Job Ticket: 50833

**DST#: 2**

ATTN: Jon Christensen

Test Start: 2013.01.25 @ 03:12:43

## GENERAL INFORMATION:

Formation: **Swope/Hertha**

Deviated: No Whipstock: ft (KB)

Time Tool Opened: 05:39:58

Time Test Ended: 11:27:58

Test Type: Conventional Bottom Hole (Reset)

Tester: Gary Pevoteaux

Unit No: 56

**Interval: 4450.00 ft (KB) To 4496.00 ft (KB) (TVD)**

Reference Elevations: 2172.00 ft (KB)

Total Depth: 4496.00 ft (KB) (TVD)

2161.00 ft (CF)

Hole Diameter: 7.88 inches Hole Condition: Fair

KB to GR/CF: 11.00 ft

**Serial #: 8352 Outside**

Press @ Run Depth: 85.63 psig @ 4451.00 ft (KB)

Capacity: 8000.00 psig

Start Date: 2013.01.25 End Date: 2013.01.25

Last Calib.: 2013.01.25

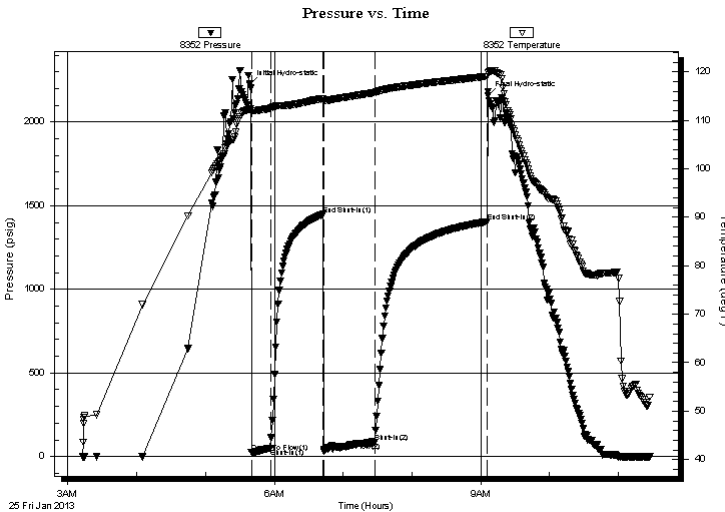
Start Time: 03:12:48 End Time: 11:27:57

Time On Btm: 2013.01.25 @ 05:38:28

Time Off Btm: 2013.01.25 @ 09:06:28

**TEST COMMENT:** IF: Strong blow . B.O.B. in 3 mins.  
IS: Weak blow . 1 - 2".  
FF: Strong blow . B.O.B. in 20 secs.  
FS: Weak blow . 1 - 3 1/2".

## PRESSURE SUMMARY



Time (Min.)	Pressure (psig)	Temp (deg F)	Annotation
0	2222.27	112.31	Initial Hydro-static
2	24.25	111.51	Open To Flow (1)
18	50.39	112.49	Shut-In(1)
64	1447.74	114.47	End Shut-In(1)
65	31.87	114.06	Open To Flow (2)
109	85.63	115.70	Shut-In(2)
207	1405.01	119.06	End Shut-In(2)
208	2159.65	119.91	Final Hydro-static

## Recovery

Length (ft)	Description	Volume (bbl)
120.00	GMCO 30%g 27%m 43%o	0.59
100.00	GOCM 25%g 32%o 43%m	0.52
10.00	Clean oil	0.14
0.00	1360 ft.of GIP	0.00

\* Recovery from multiple tests

## Gas Rates

Choke (inches)	Pressure (psig)	Gas Rate (Mcf/d)



**TRILOBITE  
TESTING, INC.**

# DRILL STEM TEST REPORT

**FLUID SUMMARY**

Strata Exploration Inc.

**14-27-18w Kiowa Ks.**

P.O.Box 401  
Fairfield Il.62837

**Bordewick #1-14**

Job Ticket: 50833

**DST#: 2**

ATTN: Jon Christensen

Test Start: 2013.01.25 @ 03:12:43

## Mud and Cushion Information

Mud Type: Gel Chem

Cushion Type:

Oil API:

deg API

Mud Weight: 9.00 lb/gal

Cushion Length:

ft

Water Salinity:

7000 ppm

Viscosity: 54.00 sec/qt

Cushion Volume:

bbbl

Water Loss: 10.39 in<sup>3</sup>

Gas Cushion Type:

Resistivity: 0.00 ohm.m

Gas Cushion Pressure:

psig

Salinity: 7000.00 ppm

Filter Cake: 0.20 inches

## Recovery Information

Recovery Table

Length ft	Description	Volume bbbl
120.00	GMCO 30%g 27%m 43%o	0.590
100.00	GOCM 25%g 32%o 43%m	0.519
10.00	Clean oil	0.140
0.00	1360 ft.of GIP	0.000

Total Length: 230.00 ft

Total Volume: 1.249 bbl

Num Fluid Samples: 0

Num Gas Bombs: 0

Serial #: none

Laboratory Name:

Laboratory Location:

Recovery Comments:

