

LITHOLOGY STRIP LOG

WellSight Systems

Scale 1:240 (5"=100') Imperial

Well Name: Bordewick #1-14
Location: 2240' FNL & 400' FEL, Sec. 14-T27S-R18W, Kiowa Co., KS.
Licence Number: 15-097-21745-0000 Region: Greensburg Ext.
Spud Date: 1/18/2013 Drilling Completed: 1/27/2013
Surface Coordinates: 2240' FNL & 400' FEL, Sec. 14-T27S-R18W

Bottom Hole Same as above
Coordinates:
Ground Elevation (ft): 2161' K.B. Elevation (ft): 2172'
Logged Interval (ft): 3300' To: 4835' Total Depth (ft): 4835'
Formation: Viola at Total Depth.
Type of Drilling Fluid: Freshwater/Gel to 3016'; Chemical Gel 3016' to 4835'
Printed by MUD.LOG from WellSight Systems 1-800-447-1534 www.WellSight.com

OPERATOR

Company: Strata Exploration, Inc.
Address: P.O. Box 401
Fairfield, IL. 62837-0401

GEOLOGIST

Name: Jon D. Christensen
Company: Consulting Petroleum Geologist
Address: 9002 W. Silver Hollow St.
Wichita, KS. 67205-8856

Cores

None Taken

DSTs

DST #1(Lansing 'A') 4151' - 4168' Test Times 15"-45"-45"-90" IFP Fair 6" Blow, FFP Fair 3" Blow, no Blowback on SI's; REC: 165' Gas in Pipe, 15' OCM(8%O, 92%M), no Water; IFP 16-21#, ISIP 91#, FFP 21-26#, FSIP 98#, IHP 2032#, FHP 1941#, BHT 112 Deg. F.

DST #2(K.C. Swope/Hertha) 4450' - 4496' Test Times 15"-45"-45"-90" IFP Strong Blow BOB/3 Min., 2" Blowback on ISI, FFP Strong Blow BOB/20 Sec., 3.5" Blowback on FSI; REC: 1360' Gas in Pipe, 10' Clean Oil(Est. 35 - 38 Deg. API), 120' GMCO(30%G, 43%O, 27%M), 100' GHOCM(25%G, 32%O, 43%M), no Water; IFP 24-50#, ISIP 1448#, FFP 32-86#, FSIP 1405# and Building, IHP 2222#, FHP 2160#, BHT 119 Deg. F.

DST #3(Miss Chert) 4678' - 4736' Test Times 15"-45"-30"-90" IFP Strong Blow BOB/3 Min., FFP Strong Blow BOB/5 Sec., no Gas to Surface, no Blowback on SI's; REC: 1705' Gas in Pipe, 20' GCM(10%G, 90%M), no oil, no water; IFP 22-27#, ISIP 381#, FFP 22-27#, FSIP 907# and Building, IHP 2280#, FHP 2250#, BHT 124 Deg. F.

DST #4(Kinderhook Sand) 4753' - 4771' Test Times 15"-45"-45"-90" IFP Weak 2" Blow, no Blowback on ISI, FFP Weak to Fair 3.25" Blow, Weak Surface Blowback on FSI; REC: 115' Gas in Pipe, 25' OCM(6%O, 94%M), Clean Oil in top of test tool, no water; IFP 17-25#, ISIP 456#, FFP 26-35#, FSIP 883# and Building, IHP 2366#, FHP 2320#, BHT 126 Deg. F.

Comments

1/18/13 MIRU Sterling Drilling Rig #2, Spud at 7:30 PM; 1/19/13 TD. 566' - WOC; 1/20/13 Drilling at 1519'; 1/21/13 Drilling at 2690'; 1/22/13 Drilling at 3420'; 1/23/13 Drilling at 4085'; 1/24/13 Drilling at 4205'; 1/25/13 TD. 4496' - DST #2; 1/26/13 TD. 4736' CFS/CCH for DST #3; 1/27/13 TD. 4771' - DST #4, RTD. 4835' at 5:30 PM. - LTD. ' ; 1/28/13

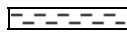



Set new 8 5/8"(23#) Surface Casing at 561' with 350 sacks cement(Basic Energy Services). Cement did Circulate. PD. 5:45 AM. on 1/19/13.





Surveys: 0.50 Deg. at 566'(Surface Casing); 0.75 Deg. at 4168'(DST #1); 1.75 Deg. at 4496'(DST #2); Deg. at 4835'(RTD).

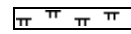

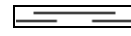
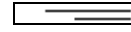
Pipe Strap at 4168'(DST #1): Strap 0.49' Short to the Board, no correction made to the Board.

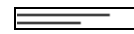



ROCK TYPES

	Anhy
	Bent
	Brec
	Cht

	Clyst
	Coal
	Congl
	Dol

	Gyp
	Igne
	Lmst
	Meta

	Mrlst
	Salt
	Shale
	Shcol

	Shgy
	Sltst
	Ss
	Till

ACCESSORIES

- MINERAL**
- Anhy
 - Arggrn
 - Arg
 - Bent
 - Bit
 - Breclfrag
 - Calc
 - Carb
 - Chtdk
 - Chtlt
 - Dol
 - Feldspar
 - Ferrpel
 - Ferr
 - Glau

- Gyp
- Hvymin
- Kaol
- Marl
- Minxl
- Nodule
- Phos
- Pyr
- Salt
- Sandy
- Silt
- Sil
- Sulphur
- Tuff

- FOSSIL**
- Algae
 - Amph
 - Belm
 - Bioclst
 - Brach
 - Bryozoa
 - Cephal
 - Coral
 - Crin
 - Echin
 - Fish
 - Foram
 - Fossil
 - Gastro
 - Oolite

- Ostra
- Pelec
- Pellet
- Pisolite
- Plant
- Strom

- STRINGER**
- Anhy
 - Arg
 - Bent
 - Coal
 - Dol
 - Gyp
 - Ls
 - Mrst

- Sltstrg
- Ssstrg

- TEXTURE**
- Boundst
 - Chalky
 - Cryxln
 - Earthy
 - Finexln
 - Grainst
 - Lithogr
 - Microxln
 - Mudst
 - Packst
 - Wackest

OTHER SYMBOLS

- POROSITY**
- Earthy
 - Fenest
 - Fracture
 - Inter
 - Moldic
 - Organic
 - Pinpoint

- Vuggy
- SORTING**
- Well
 - Moderate
 - Poor

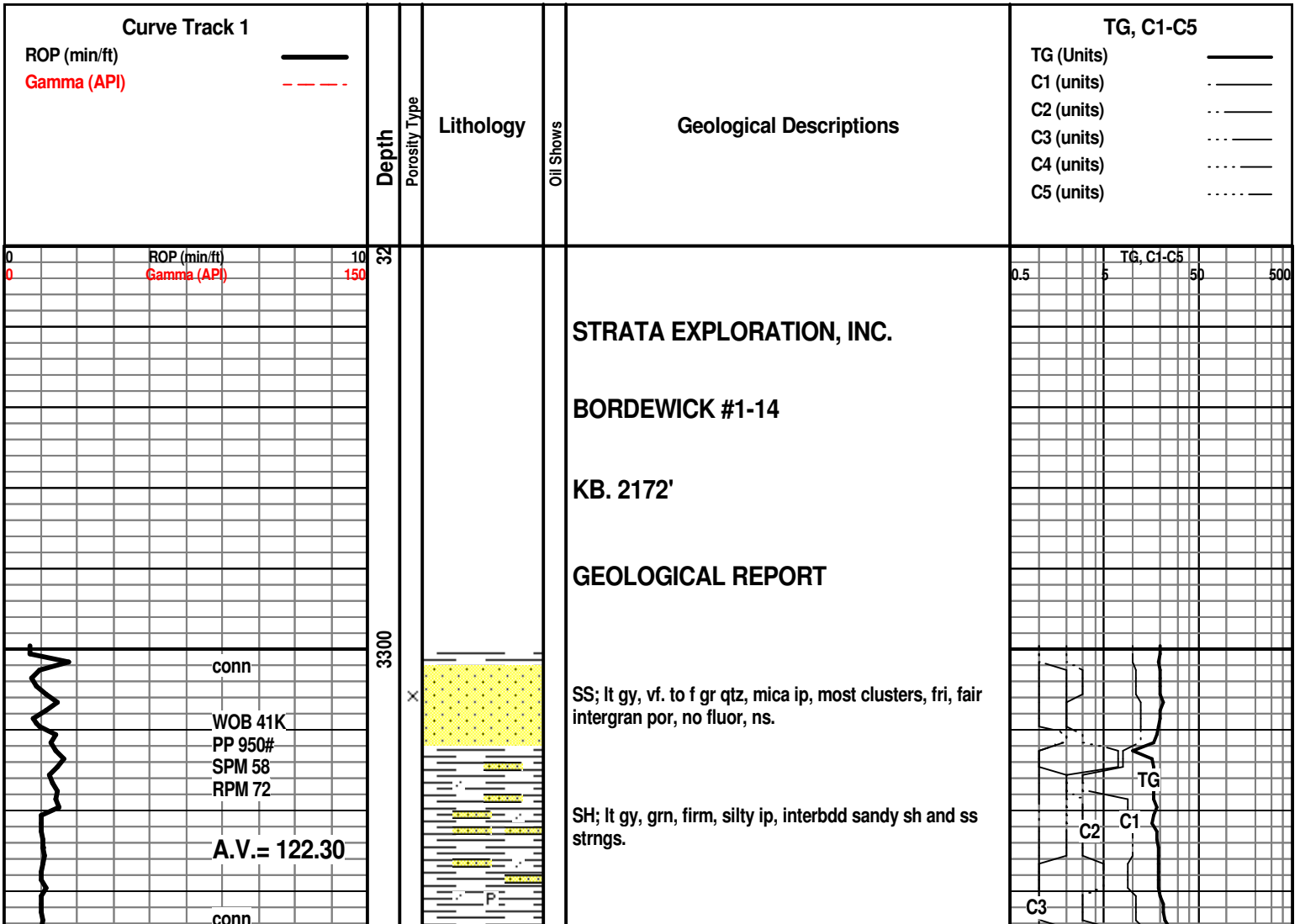
- ROUNDING**
- Rounded
 - Subrnd
 - Subang
 - Angular

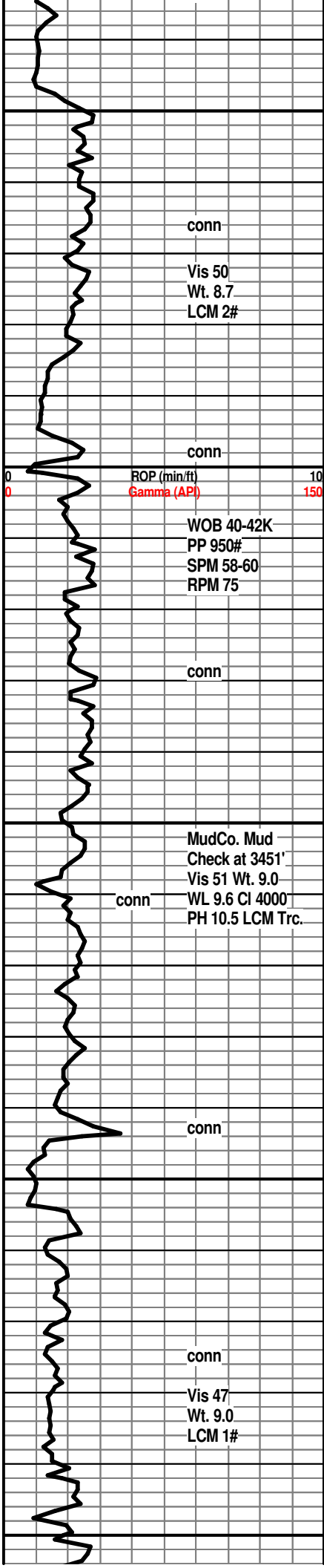
- Spotted
- Ques
- Dead

- EVENT**
- Rft
 - Sidewall

- INTERVAL**
- Core
 - Dst

- OIL SHOW**
- Even





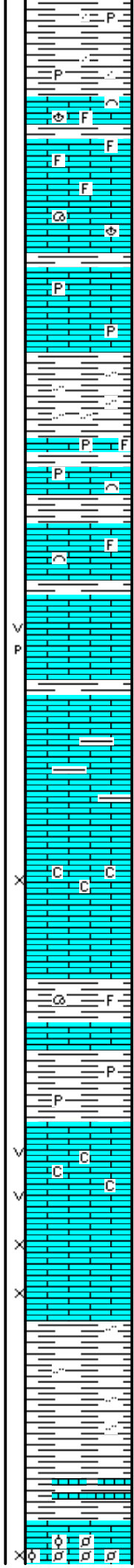
3350
3400
3450
3500
3550

conn
Vis 50
Wt. 8.7
LCM 2#

conn
ROP (min/ft) 10
Gamma (API) 150
WOB 40-42K
PP 950#
SPM 58-60
RPM 75

conn
MudCo. Mud
Check at 3451'
Vis 51 Wt. 9.0
WL 9.6 Cl 4000
PH 10.5 LCM Trc.

conn
Vis 47
Wt. 9.0
LCM 1#



SH; lt to med gy, fiss, occ silty, occ pyr

STOTLER LMST. 3348(-1176)

LM; tan to lt brn, buff, foss, abnt fusulinids, most well cem, blocky, scat lt yel min fluor, no stn or odor, no gas kick, ns.

LM; lt brn, lt gy, tan, foss, most well cem, hd, blocky, no vis por, scat lt yel min fluor, ns.

LM; med to occ dk brn, gy brn, dense, pyr ip, hd, no vis por, ns.

SH; lt to med gy, fiss - flakey, interbdd silty sh.

LM; lt to med brn, hd, foss ip, well cem, scat pyr, tite

LM; lt to med brn, most micritic, dense, scat well cem foss, spotted lt yel min fluor, ns.

LM; tan to off wh, lt brn, fxln w/scat cse spar calc xtals, dull to lt yel fluor, scat poor p-p and small vug por, no stn, ns.

LM; med brn, micritic, blocky, v. hd, interbdd argil lmst, no vis por, ns.

LM; off wh, wh, gran to med xln, fair interxln por, chalky soft mtx ip, lt yel fluor, no stn or odor, ns.

SH; med to dk gy, firm, occ foss

LM; med to dk gy brn, dense, blocky

SH; med gy, gy brn, occ pyr, firm

LM; off wh, wh, med xln, scat fair vug por, poss. gas bubbles, minor chalky mtx, dull yel fluor, no odor, no stn, poor/questionable sample shows

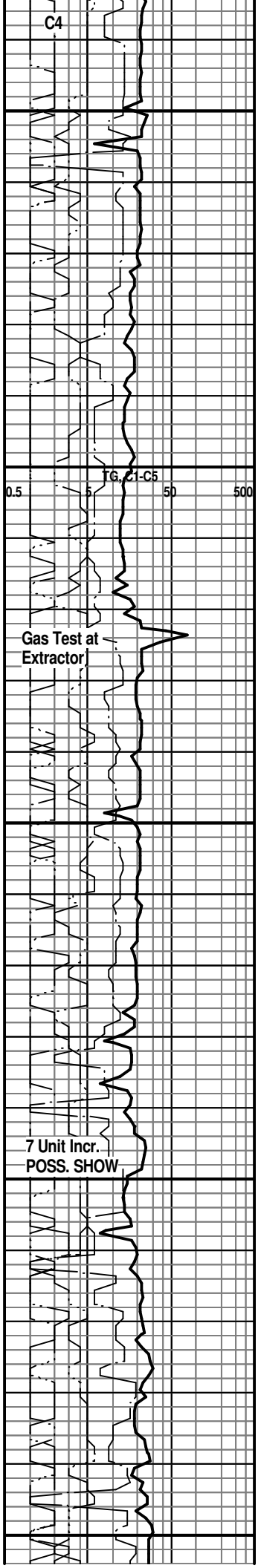
LM; tan to lt brn, med xln to gran, scat fair to gd interxln por, occ p-p por, lt yel fluor, no stn or odor, ns.

SH; med gy, platy to flakey, occ silty

SH; lt to med gy, gy grn, foss ip, interbdd shaly lmst, firm

HOWARD 3548(-1376)

LM; lt brn, tan, v. foss - finely pelletal/oolitic, compact, most well cem, poor internart por, lt yel min fluor, no

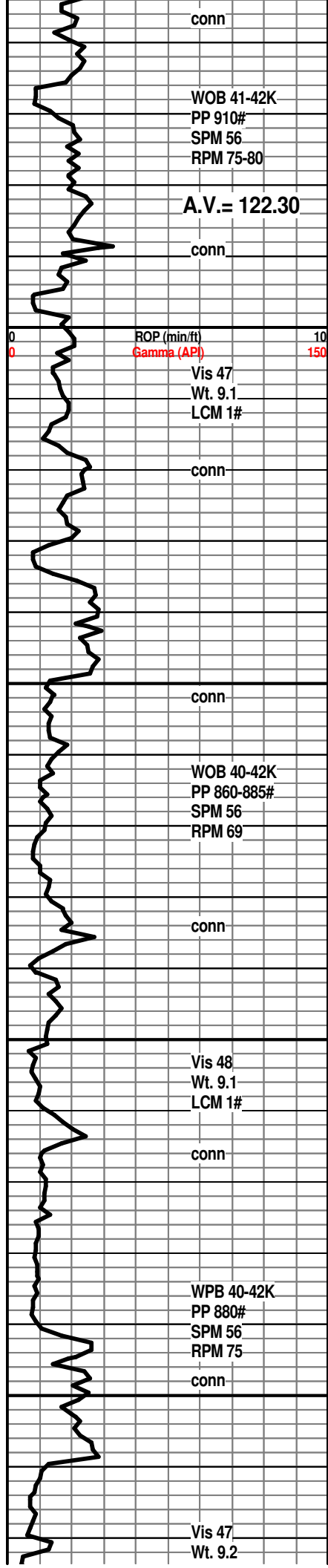


TG, C1-C5 0.5 5 50 500

Gas Test at Extractor

7 Unit Incr.
POSS. SHOW

C4



conn
 WOB 41-42K
 PP 910#
 SPM 56
 RPM 75-80
 A.V. = 122.30

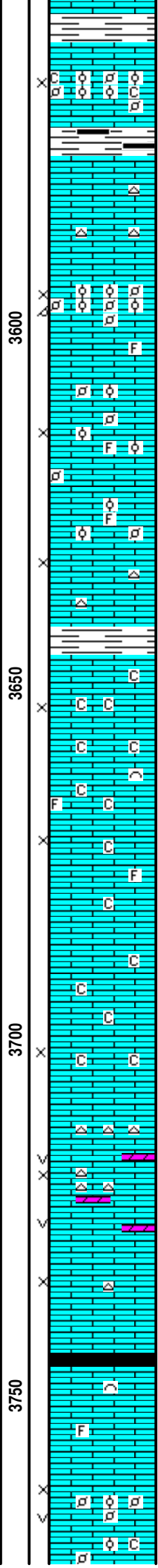
Vis 47
 Wt. 9.1
 LCM 1#

WOB 40-42K
 PP 860-885#
 SPM 56
 RPM 69

Vis 48
 Wt. 9.1
 LCM 1#

WPB 40-42K
 PP 880#
 SPM 56
 RPM 75

Vis 47
 Wt. 9.2



most brn congl, poor interpart por, lt yel min fluor, no stn or odor, no gas kick, ns.

LM; wh, off wh, foss to med xln, fair to gd interxln por, scat finely pelletal/oolitic lmst, occ soft chalky mtx, lt to med yel min fluor, ns.

SH; dk gy, trc blk, platy

LM; wh, off wh, tan/cream, most dense, micritic, occ wh cht, tite

LM; lt brn, tan, foss - oolitic, pelletal, some compact w/poor interpart por, fair oomoldic por ip, lt yel min fluor, no gas kick, ns.

LM; lt brn, tan, foss to med xln, fair interxln w/scat interpart por, interbdd finely pelletal lmst, lt yel fluor, no stn or odor, ns.

LM; lt brn, med xln to gran, v. gd interxln por, no fluor, no stn, occ off wh to gy cht, ns.

SH; dk gy, lmy ip.

LM; off wh, wh, med xln to gran text, fair interxln por, much soft chalk and chalky mtx, dull yel min fluor, no stn or odor, ns.

LM; tan to off wh, buff, f to med xln, scat foss mat, interbdd soft chalky lmst, rare off wh cht, dull yel min fluor, ns.

LM; tan to off wh, f to med xln, gran text ip, gd interxln por, occ chalky, no fluor, no stn or odor, ns.

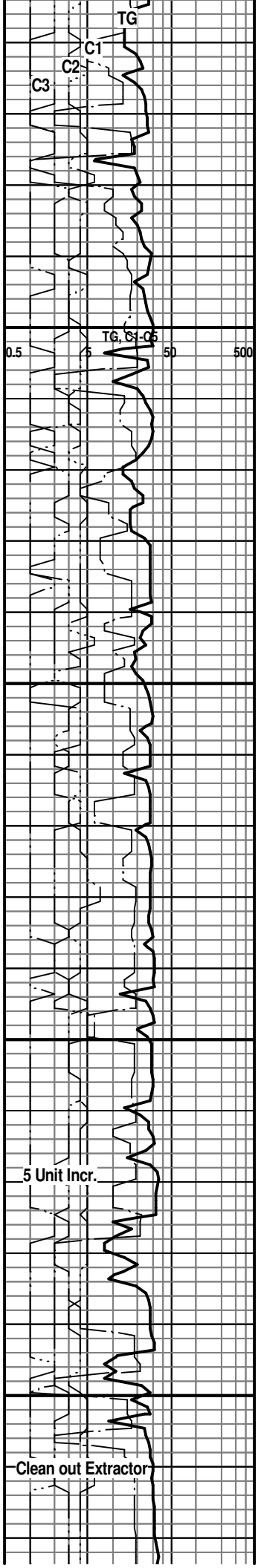
LM; off wh, buff, tan, f to med xln, occ sucrosic text, dolomitic ip, gd interxln w/wscat vug por, dull to lt yel fluor, occ cherty, no stn, no sample shows

LM; tan to lt brn, med to cse xln, v. gd interxln w/vug por, soft, dull to lt yel fluor, no stn or odor, ns.

SH; dk gy - blk, platy, firm

LM; lt to med brn, gy brn, blocky, hd, scat foss mat, no fluor, ns.

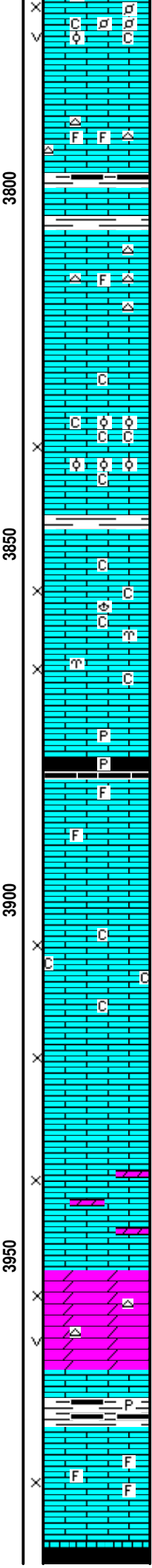
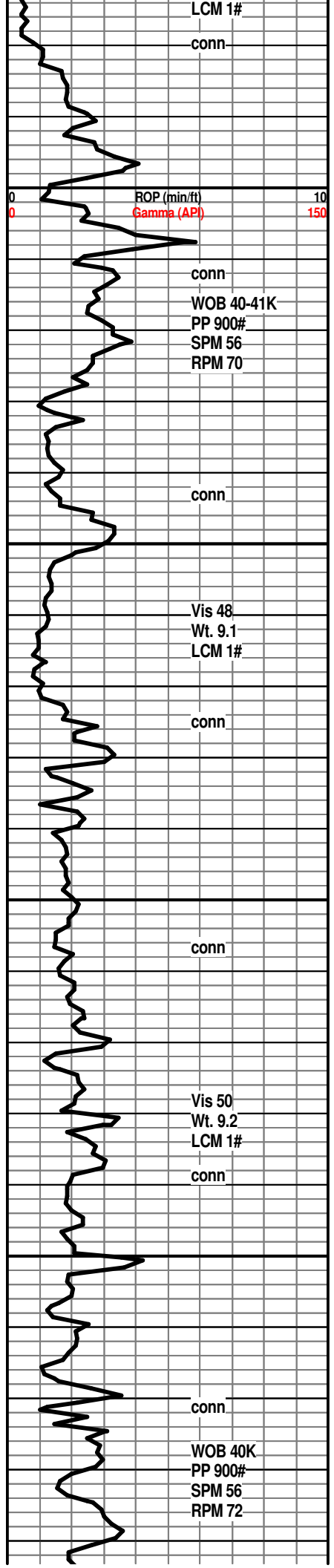
LM; off wh, tan, med to cse xln, v. gd interxln w/scat vug por, interbdd foss - pelletal lmst, lt yel min fluor only, no stn, no gas kick, occ soft and chalky at base, ns.



0.5 TG, C1-C3 50 500

5 Unit Incr.

Clean out Extractor



LM; tan to lt brn, buff, fxln w/gy occ foss cht, no vis por, no fluor, ns.

SH; dk gy, trc blk, platy

LM; tan to lt brn, dense, micritic, blocky, interbdd off wh to gy cht, no vis por, no fluor, ns.

LM; off wh, wh, tan, f to med xln, much soft chalk and chalky mtz, fair interxln por, lt yel min fluor, interbdd foss lmst w/scat small oolites, no stn, ns.

LM; off wh, buff, tan, f to med xln, some gran text, fair to gd interxln por, interbdd chalky lmst, scat foss mat, lt yel to no fluor, no stn, ns.

LM; med to dk brn, hd, micritic, pyr ip.

QUEEN HILL SHALE 3880(-1708)

SH; blk, platy, occ pyr

LM; tan to buff, lt brn, fxln w/occ foss mat, poor interpart por, lt yel min fluor, ns.

LM; off wh, tan, buff, f to med xln, scat cse spar calc xtals, poor to fair interxln por, bcm soft w/chalk and chalky mtz, lt yel to no fluor, no stn or odor, ns.

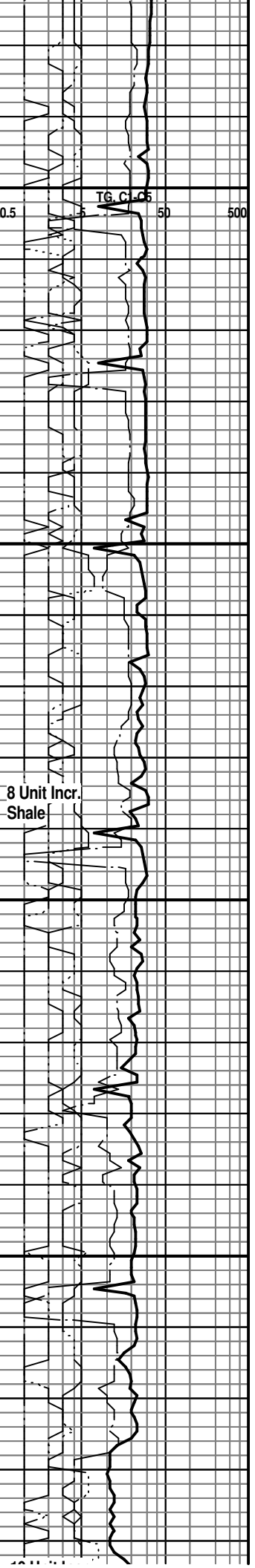
LM; tan to lt gy, off wh, f to med xln, scat foss mat, poor to fair interxln por, interbdd dolomitic lmst - some sucrosic text, lt yel min fluor, no stn or odor, ns.

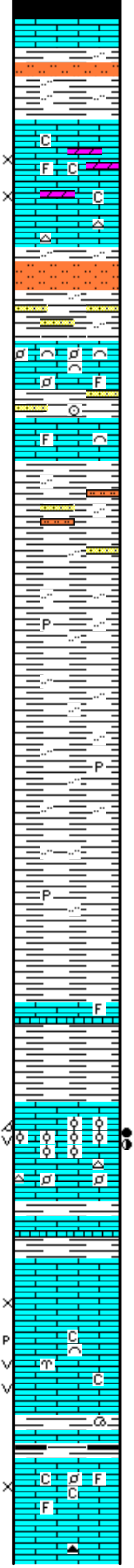
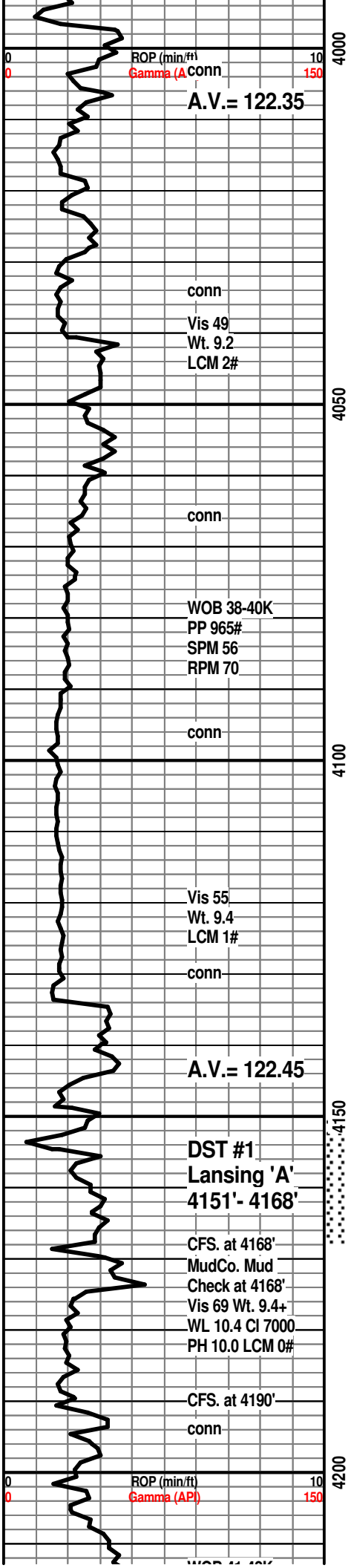
DOL; lt brn, sucrosic, fair interxln w/scat small vug por, lt yel min fluor, cherty ip, no stn or odor, no gas kick, ns.

SH; dk gy, some blk, platy, smooth, pyr ip.

LM; tan to cream, buff, fxln, occ foss, fair interxln/interpart por, interbdd wh to off wh cht, dull yel min fluor, no stn or odor, ns.

HEEBNER SHALE 3991(-1819)





SH; blk, carb ip, platy
LM; med to dk brn, dense, blocky

SH; grn, gy grn, silty w/interbdd sltst

TORONTO 4010(-1838)
LM; wh, off wh, buff, f to med xln, trc sucrosic text, partly dolomitic, fair interxln por, bcm partly chalky, lt yel min fluor, ns.

DOUGLAS SHALE 4028(-1856)
SH; lt gy, silty w/interbdd sltst, mica ip, trc vf gr qtz ss

LM; lt to med brn, gy brn, foss, abnt fine pellets and foss hash, well cem, lt yel min fluor, no stn, ns.

LM; med brn, hd, scat foss mat, dense

SH; lt to med gy, silty, interbdd silty sh and vf gr qtz ss strngs

SH; lt to med gy, platy, some very soft - flakey

SH; lt to med gy, soft - sticky ip, platy, occ pyr

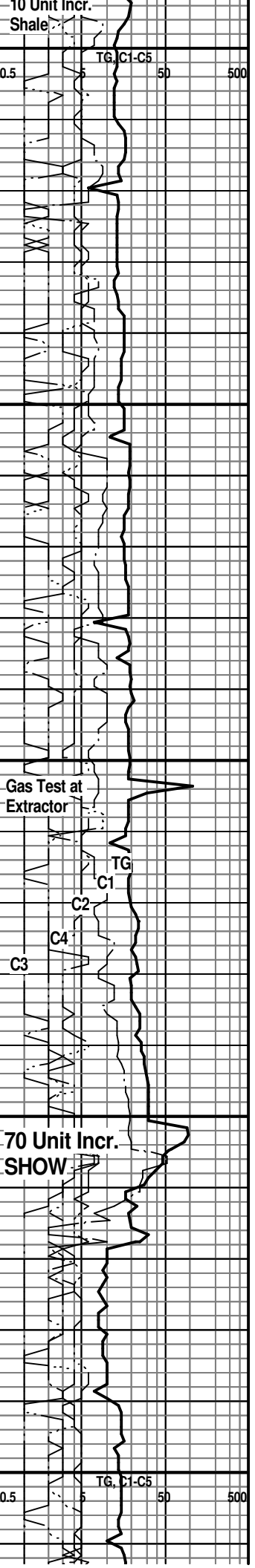
BROWN LMST. 4134(-1962)
LM; med brn, dense, blocky, foss ip.
SH; med gy, gy grn, foss, lmy w/interbdd calc sh

LANSING 'A' 4148(-1976)
LM; lt to med brn, oolitic, med to lrg molds, gd oomoldic por, scat vug por, brittle ip, med to brite yel fluor, fair/gd odor, spotted to even lt brn oil stn, SSFO, gas bubbles, fair/gd cut
LM; off wh, lt brn, foss- well cem, lt yel fluor, ns.

DST #1: Lansing 'A' 4151' - 4168'
LANSING 'B' 4170(-1998)
LM; off wh, lt gy, f to med xln, fair interxln por, trc frags, lt yel fluor, trc. v. spotted lt brn stn, trc gas bubbles, no gas kick
LM; tan to lt gy, foss w/fair vug/occ p-p por, dull yel fluor, no vis gas bubbles, no vis stn, no odor, no gas kick, minor chalkly mtz, ns.

SH; med gy, grn, trc dk gy/blk, foss ip, platy

LM; tan to off wh, fxln w/scat foss mat, fair interpart por, minor chalky - soft mtz, dull yel fluor, no stn or odor, no gas kick, ns.



WOB 41-42K
PP 880#
SPM 54-56
RPM 65
conn

Vis 58
Wt. 9.2
LCM 1#

conn

WOB 42K
PP 925#
SPM 56
RPM 72

conn

Vis 54
Wt. 9.2
LCM 1#

conn

Vis 50
Wt. 9.2
LCM 1#

conn
CFS. at 4357'

A.V. = 122.50

WOB 40K
PP 940#
SPM 56
RPM 77

conn

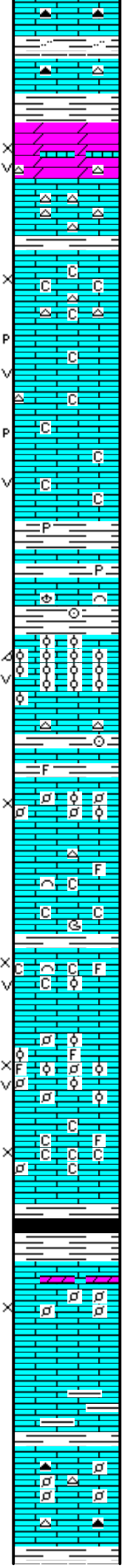
Vis 52
Wt. 9.2
LCM 1#

ROP (min/ft) 0 10
Gamma (API) 0 150

conn

WOB 40K
PP 900#
SPM 56
RPM 73

4250
4300
4350
4400



LM; med brn, platy, silty ip.

LM; med to dk brn, dense, scat gy/brn cht, tite

DOL; tan to off wh, sucrosic, lmy ip, fair interxln w/occ small vug por, lt yel fluor, no stn, no gas kick, ns.

LM; off wh, tan, most dense, micritic, cherty

LM; wh, off wh, f to med xln, poor to fair interxln por, soft chalky mtx, dull yel to no fluor, no stn or odor, occ cherty, ns.

LM; wh to off wh, med xln w/sev. opaque cse spar calc xtals, fair vug and p-p por in some, chalky mtx, no fluor, no stn or odor, ns.

SH; med to dk gy, platy, occ pyr

LM; med brn, dense, foss ip, hd

LANSING/KC. 'H' 4302(-2130)

LM; lt brn, tan, oolitic, med to lrg molds, v. gd oomoldic por, scat vugs, brittle, some rextalized, v. dull yel fluor, no stn or odor, no gas kick, barren, ns.

SH; med to dk gy, gy grn, firm, foss ip.

LM; tan to lt brn, off wh, foss - pelletal to oolitic, poor to fair interpart por, some well cem, lt yel fluor, no vis stn, no odor, ns.

LM; off wh, tan, fxln to micritic, scat foss mat, interbdd chalky lmst, no vis por, no fluor, ns.

KANSAS CITY 'I' 4346(-2174)

LM; off wh, cream, buff, foss fair interpart w/small vug por, minor chalky mtx, no fluor, no stn or odor, ns.

LM; wh, off wh, v. foss - oolitic, most med size ooids, compact, fair to gd interpart por, occ vug por, partly oomoldic, chalky mtx ip, lt yel min fluor, no stn or odor, no gas kick, ns.

LM; tan to off wh, foss to partly sucrosic text, fair interpart por, much soft chalky mtx, lt yel fluor, some chalk has brite yel fluor, ns.

SH; dk gy, some blk, fiss to flakey

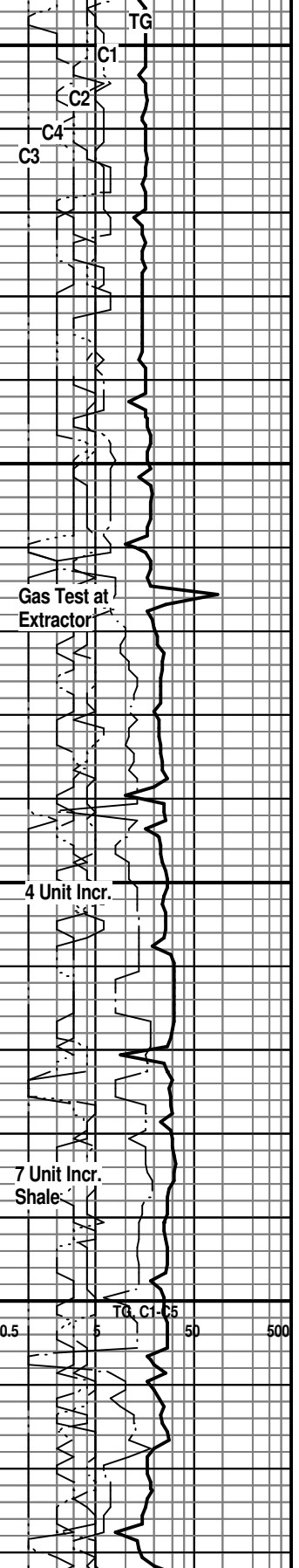
KANSAS CITY 'J' 4390(-2218)

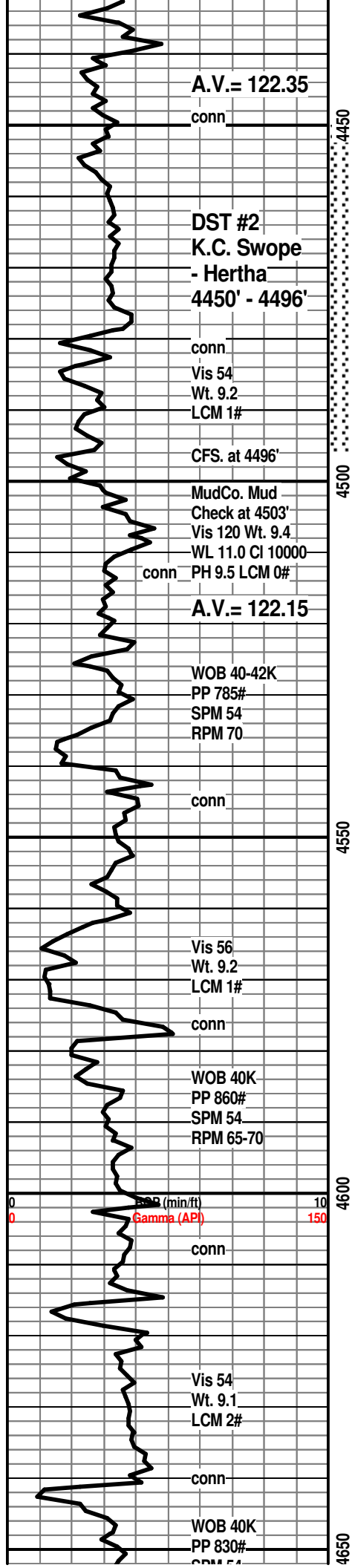
LM; tan to lt brn, foss - finely pelletal ip, most well cem, poor interpart por, interbdd sucrosic text dolo. lmst, lt yel min fluor, no stn or odor, ns.

LM; med brn, gy brn, argil ip, firm, no vis por, no fluor, ns.

LM; lt to med brn, hd, micritic, blocky, scat well cem foss pellets, occ tan to amber cht, no vis por, ns.

STARK SHALE 4432(-2261)





SH; blk, carb ip, platy, scat pyr

SWOPE 4440(-2268)
LM; tan to buff, lt brn, f to med xln, scat foss mat, poor interxln por, no fluor, no stn or odor, no gas kick

LM; off wh, buff, lt gy, med xln, trc fracs w/edge stn, spotted lt/ med yel fluor, spotted lt brn stn, SSFO, fair odor, fair p-p and vug por, some pcs bleeding oil, fair cut

LM; tan to lt brn, most dense, micritic, blocky, occ tan to gy cht, no vis por, ns.

SH; blk, carb ip, platy

HERTHA 4484(-2312)
LM; tan to cream, buff, off wh, foss ip, occ finely pelletal, fracs w/edge stn, med yel fluor, lt brn F.O. droplets in fracs, faint odor, gd cut

DST #2: Swope/Hertha 4450'- 4496'
LM; off wh, buff, foss w/scat small pellets, chalky soft mtx, poor interpart por, dull yel fluor, no vis stn, no odor, ns.

SH; med gy, grn, pyr ip, platy

LM; med to dk brn, hd, micritic, scat dk gy to smoky/blk cht, tite

BASE KANSAS CITY 4524(-2356)

SH; grn, gy grn, rust red, maroon, silty, w/brn nodular to foss hd lmst.

PLEASANTON 4540(-2368)
LM; tan to off wh, lt brn, foss ip, most well cem, scat chalky mtx, no fluor, no stn or odor, ns.

SH; red, red brn, grn, soft - sticky

LM; lt brn, buff, hd, micritic, no vis por, ns.

SH; blk, dk gy, varic, much v. soft - sltst interbdd, occ dissem. pyr

MARMATON 4573(-2401)
LM; lt brn, pale grn tint, argil ip, dense, blocky, no fluor, ns.

SH; varic, platy, smooth, occ silty, interbdd hd red/brn lmst strng

LM; tan to off wh, buff, fxln to micritic, most dense, no vis por, scat tan cht, no fluor, ns.

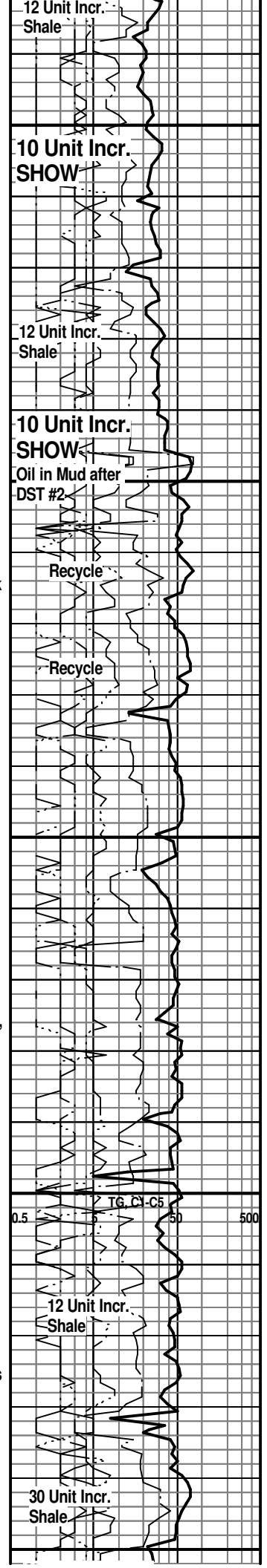
SH; blk, v. dk gy, platy

PAWNEE 4622(-2450)
LM; tan to lt brn, fxln, scat well cem foss, poor to no vis interxln por, no fluor, no stn or odor, no gas kick, trc blk cht, ns.

LM; lt brn, fxln, hd, no vis por, spotted med yel min fluor, no vis por, no stn or odor, rare gy cht, ns.

SH; blk, carb ip, trc gas, blocky

LM; med brn, foss - scat small pellets and ooids, well



SPM 54
RPM 66

conn
Vis 55
Wt. 9.1
LCM 2#

CFS. at 4695'

conn
DST #3
Miss. Chert
4678' - 4736'

CFS. at 4724'
Vis 57
Wt. 9.2
LCM 2#
CFS. at 4736'

MudCo. Mud
Check at 4736'
Vis 61 Wt. 9.2
WL 9.2 Cl 8000
PH10.0 LCM 3#

DST #4
Kind. SS.
4753' - 4771'

CFS. at 4771'
MudCo. Mud
Check at 4771'
Vis 68 Wt. 9.3
WL 9.2 Cl 8000
PH 10.0 LCM 2#

conn
ROP (min/ft)
Gamma (API)
WOB 40K
PP 800#
SPM 54
RPM 75

Vis 59
Wt. 9.2
LCM 2#

conn
CFS. at RTD.

4700

4750

4800

4850



cem, dull yel to no fluor, no stn, ns.

CHEROKEE SHALE 4657(-2485)

SH; blk, varic, platy, occ silty, rarely foss

LM; lt brn, buff, fxln w/scat spar calc xtals, poss fracs, hd, no vis por, no fluor, no stn, ns.

LM; lt brn, med xln, spotted med brn stn, trc gas bubbles, trc p-p por w/few fracs, no odor, fair cut, trc sandy lmst

LM; tan to buff, lt brn, most dense, fracs w/blk tar/gils on edges, v. dull yel fluor, no odor

SH; varic, thin hd ss strngs, trc org/transl cht

CONGL; cht, varic, grn f gr qtz ss w/blk tar/gils, varic shales, some fracs in cht w/blk tar

MISS. CHERT/CONGL. 4704(-2532)

CHT; conglomeratic, wh, gy, some varic, fresh and trip, abnt varic shale in samples, trip cht has abnt dead oil/gils w/vug and p-p por, fracs, gas odor, gas bubbles, no live oil, lt/med yel fluor

CHT; pred wh, trip, vug por, much blk tar/gils, trc live brn stn, faint gas odor, lt/med yel fluor

KINDERHOOK SHALE 4724(-2552)

SH; grn, gy grn, sandy, firm

DST #3: Miss. Chert 4678' - 4736'

SH; grn, gy grn, sandy ip, firm

KINDERHOOK SAND 4748(-2576)

SS; clr, lt gy, clusters, most f gr qtz, subrd to subang gr, most fri w/fair to gd intergran por, spotted to even lt brn stn, fair to gd odor, SFO, gas bubbles, brite yel fluor, gd cut

SS; pale grn, wh, f gr w/rare med gr qtz, glau ip, clusters, gd por, spotted med brn stn, brite yel fluor, gas bubbles, gd cut, gd odor

DST #4: Kinderhook SS. 4753' - 4771'

LM; wh, tan, sandy, v. dense, opaque to transl. siliceous sand and chert, no vis por, ns.

LM; off wh, tan, lt brn, sandy w/f gr qtz in lmst mts, interbdd pale org to transl cht, no fluor, no stn or odor, ns.

SS; lt gy, tan, vf to f gr qtz, v. shaly - soft ip, some very shaly ss interbdd, ns.

SS; wh, grn, most f gr qtz, fair to occ gd intergran por, calc, no fluor, no stn or odor, ns.

VIOLA 4819(-2647)

LM; rose red, red brn, off wh, cherty w/varic cht, dense, no fluor, no vis por, ns.

CHT; wh, off wh, yel, fresh - sharp, poss fracs, no fluor, no stn or odor, ns.

RTD. 4835' at 5:30 PM. 1/27/13

LTD.

Halliburton DIL, NEU/DEN, Microlog
(Triple Combo Stack), FMI

Clean out extractor

12 Unit Incr.

22 Unit Incr.

200 Unit Incr.
SHOW

Mud is gas cut after DST #3

163 Unit Incr.
SHOW

40 Unit Incr.
SHOW

0.5 TG, C1-C5 500

