

# Timothy G. Pierce

## Petroleum Geologist

### GEOLOGIST'S REPORT DRILLING TIME AND SAMPLE LOG

COMPANY R & B Oil & Gas, Inc.

ELEVATIONS

LEASE Fischer-Crask #2

KB 1505'

FIELD Taffas East

DF \_\_\_\_\_

LOCATION SW NW SW

SEC 33 TWP 32S RGE 10W

GL 1495'

COUNTY Barber STATE Kansas

Measurements Are All  
From Kelly Bushing

CONTRACTOR Hardt Drilling Rig #1

CASING

SPUD 12-14-2012 COMP 12-21-2012

CONDUCTOR \_\_\_\_\_  
SURFACE 8-5/8" at 265'  
PRODUCTION 5-1/2" at 4995'

RTD 5005 (see remarks) LTD 4957

MUD UP 3131 TYPE MUD Chemical

SAMPLES SAVED FROM 4400 TO RTD

DRILLING TIME KEPT FROM 4000 TO RTD

SAMPLES EXAMINED FROM 4000 TO RTD

ELECTRICAL  
SURVEYS  
DIL / CN-CD  
Pioneer Energy Svcs.

GEOLOGICAL SUPERVISION FROM 4120' to RTD

GEOLOGIST ON WELL Tim Pierce

FORMATION TOPS

ELECTRIC LOG

SAMPLE

Heebner Sh. 3547 (-2042) NA

Stark Sh. 4211 (-2706) 4211 (-2706)

Cherokee Sh. 4438 (-2933) 4437 (-2932)

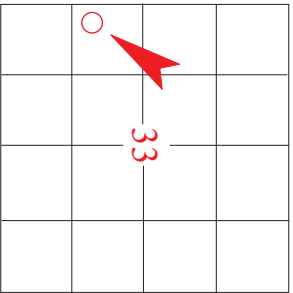
Mississippi 4492 (-2987) 4485 (-2980)

Kinderhook Sh. 4690 (-3185) 4689 (-3184)

Chattanooga Sh. 4744 (-3239) 4742 (-3237)

Viola 4787 (-3282) 4785 (-3280)

Simpson 4870 (-3365) 4878 (-3373)


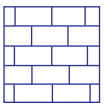
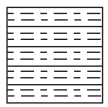

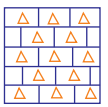

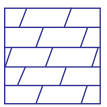


API # 15-007-23,976

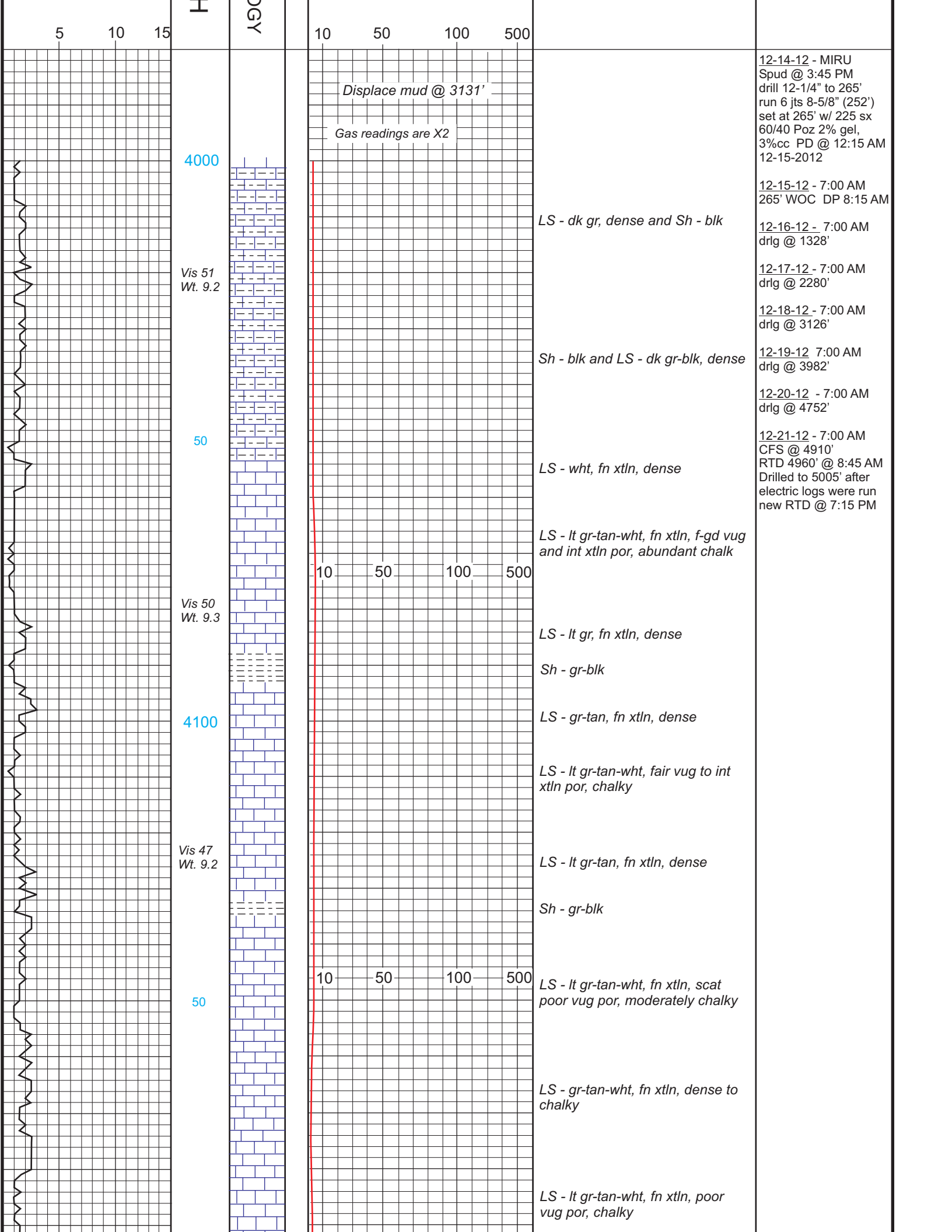
REMARKS This well was logged at a rotary depth of 4960' then additional hole was drilled after logging.  
DST results and electric logs indicate a possible productive zone in the Meisner Sand from 4781' - 4785'  
Samples and electric logs indicate a probable productive zone in the Mississippi from 4505' - 4542'.  
Electric logs indicated a possible productive zone in the Simpson at 4918' - 4924'. Additional hole was drilled to 5005' after logs were run in order to allow room for rat hole and casing so this zone could be perforated and tested.  
Electric logs indicated a possible productive zone in the Swope LS at 4220' - 4224'  
There were no other zones of interest indicated by samples or electric logs

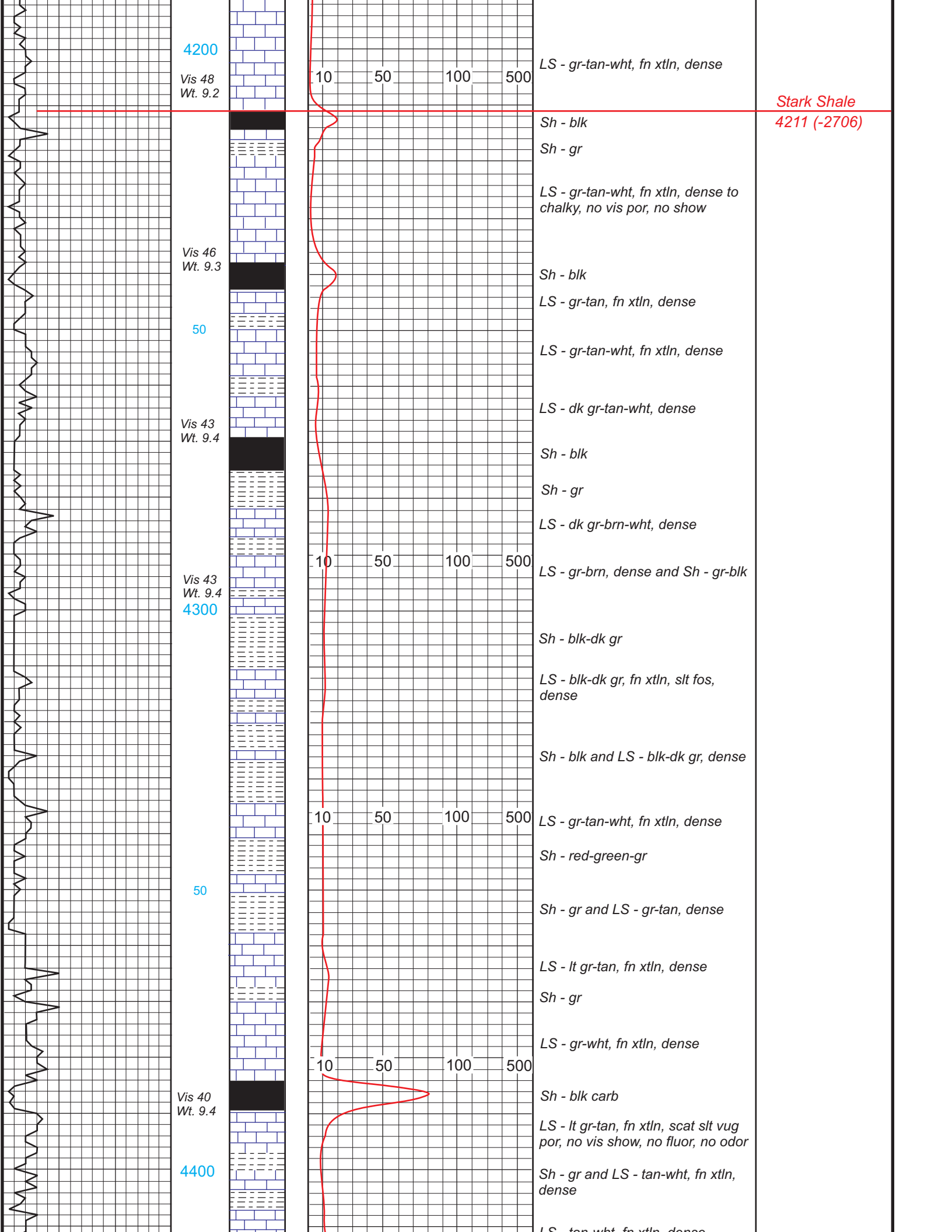
Timothy G. Pierce

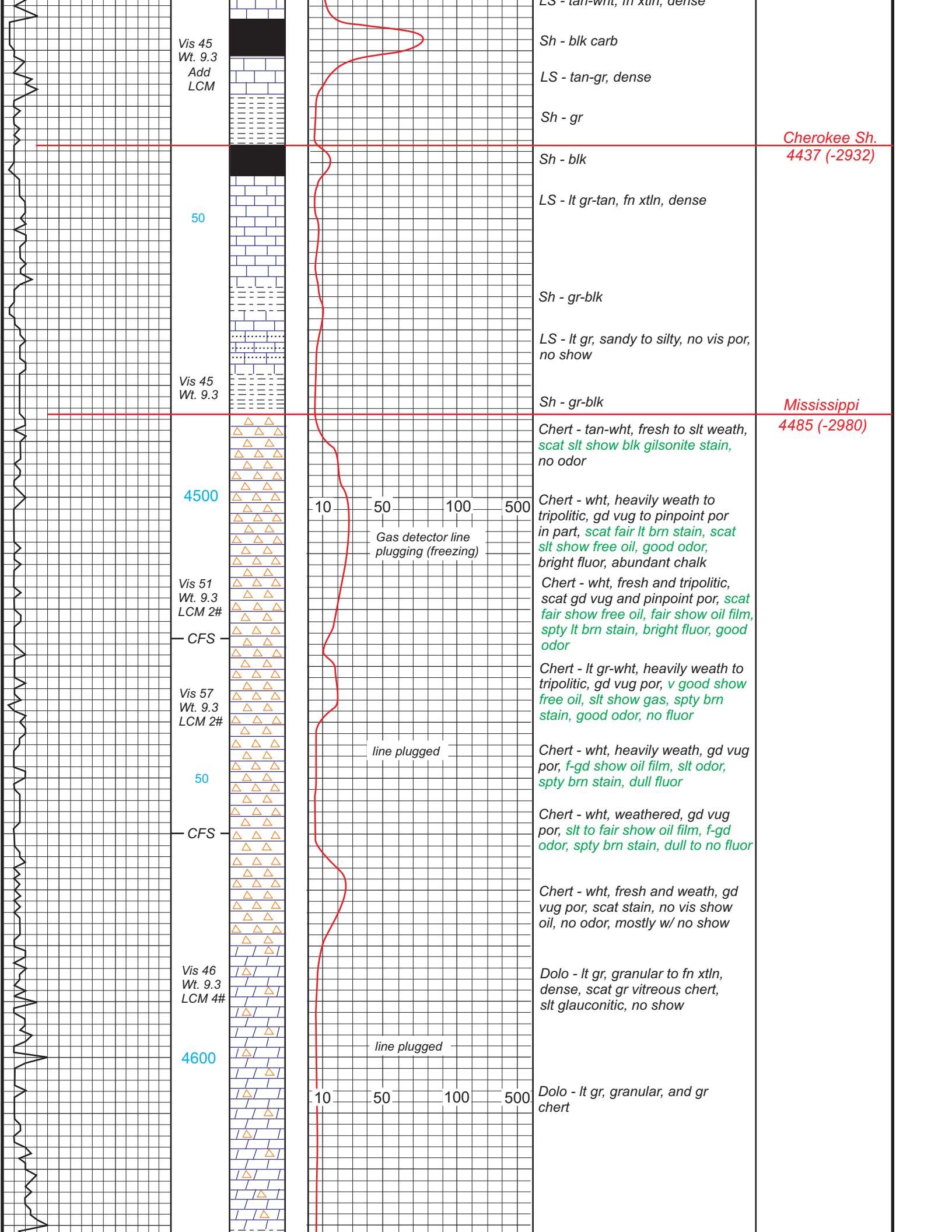
### LEGEND

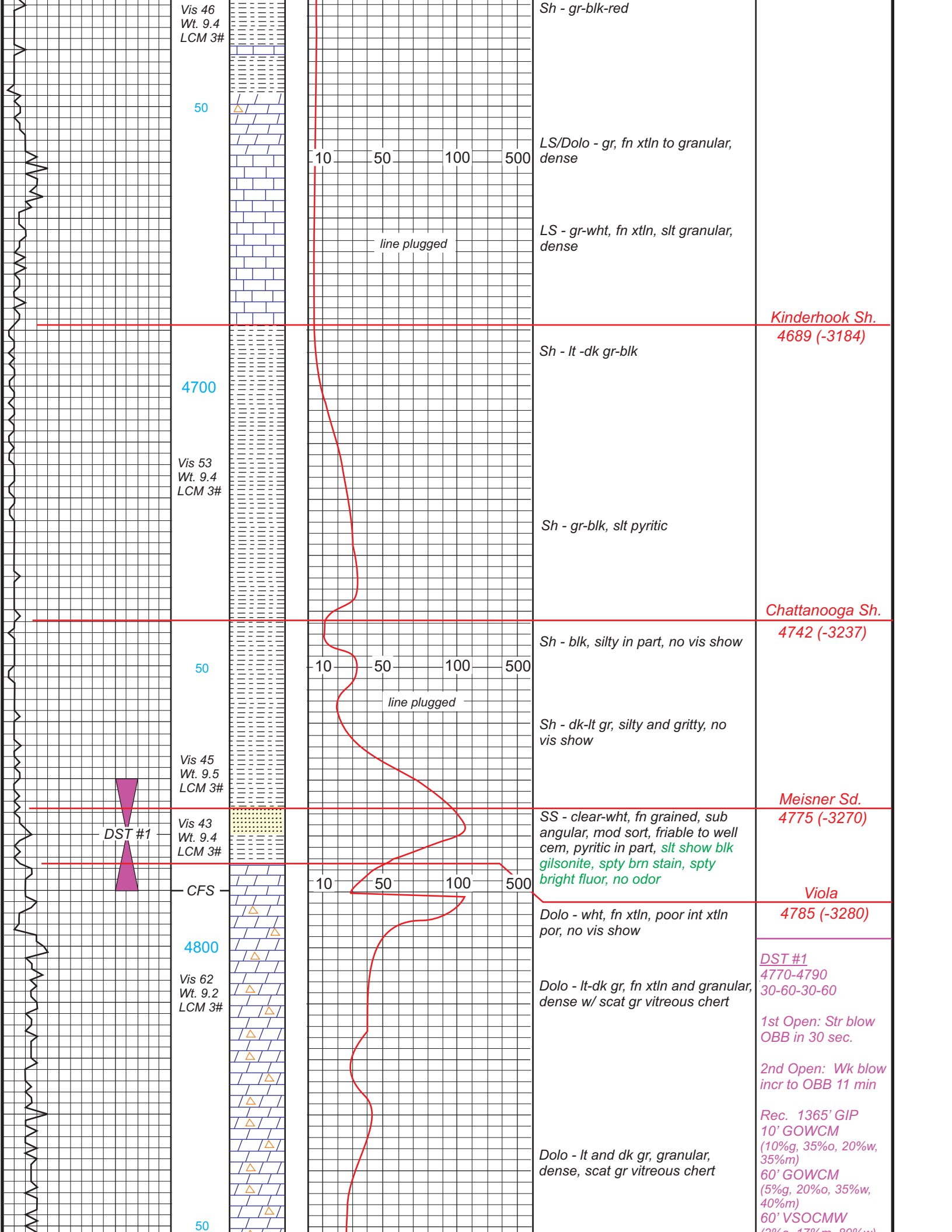
							
Anhydrite	Sandstone	Limestone	Shale	Carb Sh	Cherty LS	Chert	Dolomite

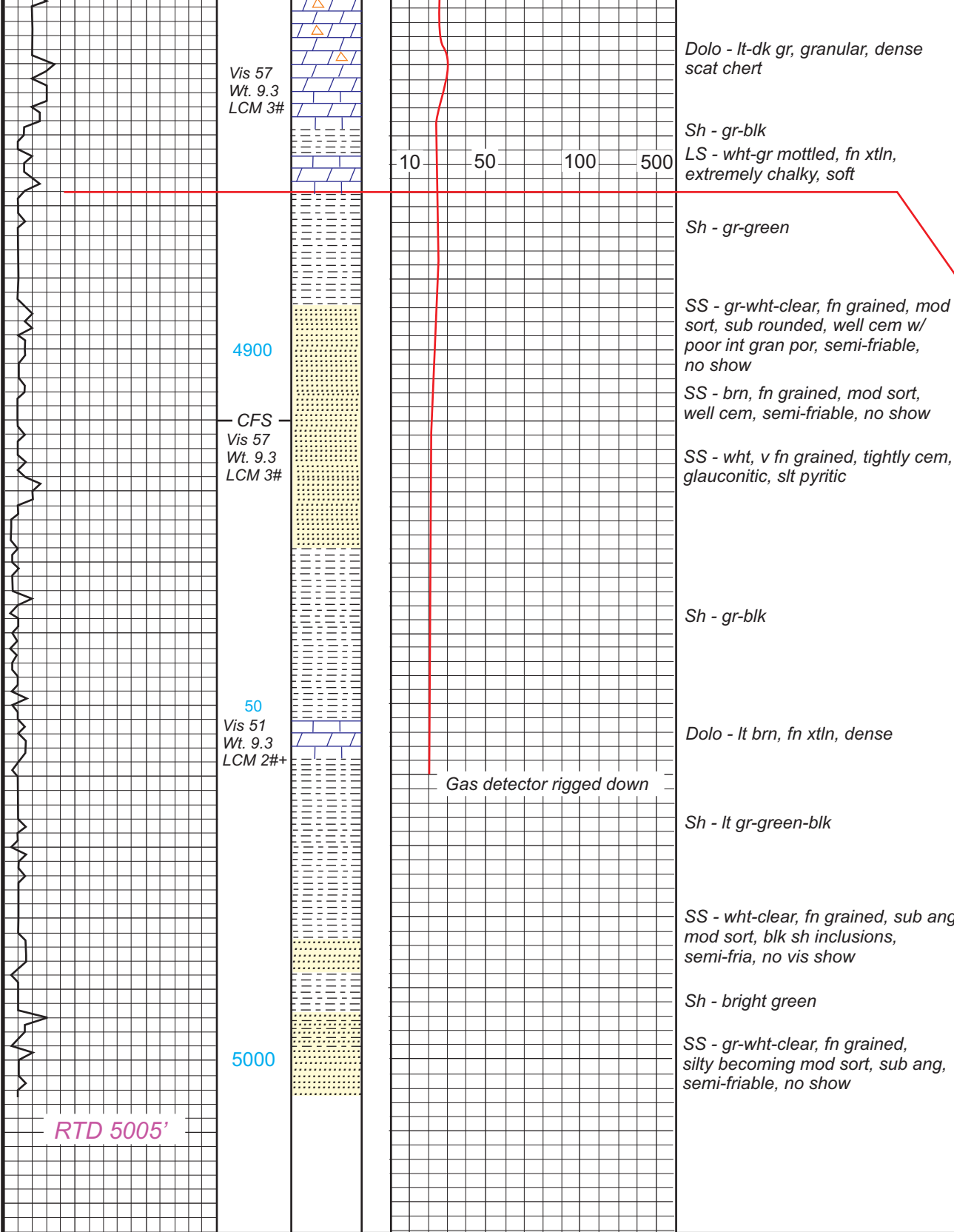
<p>DRILLING TIME IN MINUTES PER FOOT</p> <p>Rate of Penetration Decreases</p> <p style="text-align: right;">→</p>	<p>DEPTH</p>	<p>LITHOLOG</p>	<p>GAS SCALE</p>	<p>SAMPLE DESCRIPTION</p>	<p>REMARKS</p>
---	--------------	-----------------	------------------	---------------------------	----------------











Dolo - lt-dk gr, granular, dense scat chert

Sh - gr-blk  
LS - wht-gr mottled, fn xtltn, extremely chalky, soft

Sh - gr-green

SS - gr-wht-clear, fn grained, mod sort, sub rounded, well cem w/ poor int gran por, semi-friable, no show

SS - brn, fn grained, mod sort, well cem, semi-friable, no show

SS - wht, v fn grained, tightly cem, glauconitic, slt pyritic

Sh - gr-blk

Dolo - lt brn, fn xtltn, dense

Sh - lt gr-green-blk

SS - wht-clear, fn grained, sub ang mod sort, blk sh inclusions, semi-fria, no vis show

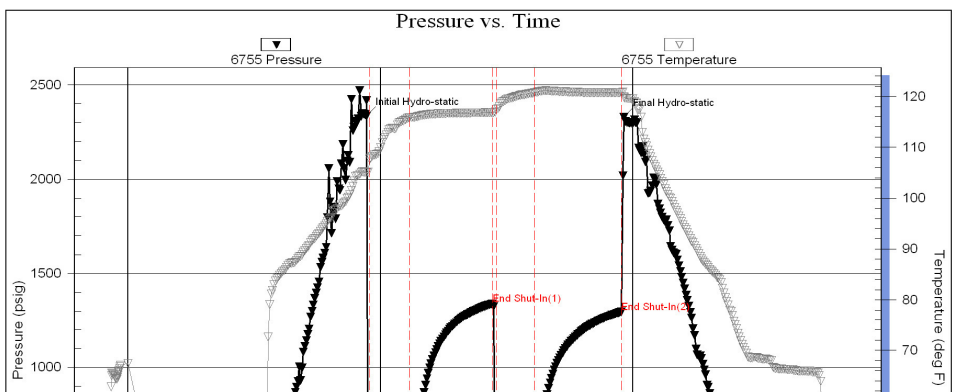
Sh - bright green

SS - gr-wht-clear, fn grained, silty becoming mod sort, sub ang, semi-friable, no show

60' MW  
(3%O, 17%III, 80%w)  
Chlorides 125,000 PPM  
(RW .17 @ 27 deg F)  
IFP: 30-71#  
FFP: 70-105#  
SIP: 1339-1295#  
HP: 2333-2328#  
BHT: 125 deg

Simpson  
4878 (-3373)

Serial #: 6755 Outside R & B Oil & Gas INC Fischer- Crask #2 DST Test Number: 1



DST #1  
4770-4790  
30-60-30-60  
1st Open: Str blow  
OBB in 30 sec.

2nd Open: Wk blow  
incr to OBB 11 min

Rec. 1365' GIP  
10' GOWCM  
(10%g, 35%o, 20%w, 35%m)  
60' GOWCM  
(5%g, 20%o, 35%w, 40%m)

