



TRILOBITE TESTING, INC.

DRILL STEM TEST REPORT

Berexco LLC
 2020 N.Bramblewood
 Wichita Ks.67206
 ATTN: David Gould

34-29s-24w Ford Ks
Shelor#1-36
 Job Ticket: 49735 **DST#: 1**
 Test Start: 2012.11.16 @ 12:00:21

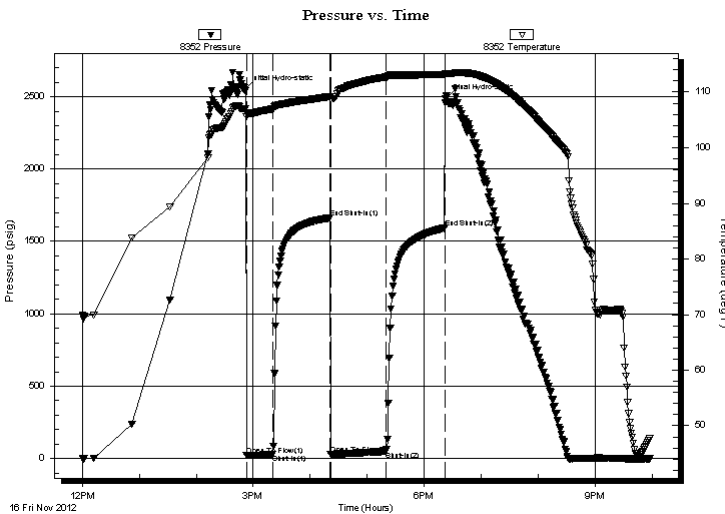
GENERAL INFORMATION:

Formation: **Pawnee**
 Deviated: No Whipstock: ft (KB)
 Time Tool Opened: 14:52:51
 Time Test Ended: 21:57:51
 Interval: **5152.00 ft (KB) To 5165.00 ft (KB) (TVD)**
 Total Depth: 5165.00 ft (KB) (TVD)
 Hole Diameter: 7.88 inches Hole Condition: Poor
 Test Type: Conventional Bottom Hole (Initial)
 Tester: Gary Pevoteaux
 Unit No: 56
 Reference Elevations: 2601.00 ft (KB)
 2588.00 ft (CF)
 KB to GR/CF: 13.00 ft

Serial #: 8352 Outside
 Press @ Run Depth: 48.88 psig @ 5153.00 ft (KB) Capacity: 8000.00 psig
 Start Date: 2012.11.16 End Date: 2012.11.16 Last Calib.: 2012.11.16
 Start Time: 12:00:26 End Time: 21:57:51 Time On Btm: 2012.11.16 @ 14:51:06
 Time Off Btm: 2012.11.16 @ 18:22:36

TEST COMMENT: IF:Weak blow . 1/4" or less.
 IS:No blow .
 FF:Very weak surface blow for last 35 mins. of final open.
 FS:No blow .

PRESSURE SUMMARY



Time (Min.)	Pressure (psig)	Temp (deg F)	Annotation
0	2545.95	106.98	Initial Hydro-static
2	19.79	105.62	Open To Flow (1)
30	27.28	107.02	Shut-In(1)
90	1663.17	109.20	End Shut-In(1)
91	29.32	108.73	Open To Flow (2)
149	48.88	112.69	Shut-In(2)
211	1592.62	113.21	End Shut-In(2)
212	2486.65	113.33	Final Hydro-static

Recovery

Length (ft)	Description	Volume (bbl)
45.00	MW 47%w 53%w (good oder)	0.22
0.00	Rw .18 ohms @48deg	0.00

Gas Rates

Choke (inches)	Pressure (psig)	Gas Rate (Mcf/d)



**TRILOBITE
TESTING, INC.**

DRILL STEM TEST REPORT

FLUID SUMMARY

Berexco LLC

34-29s-24w Ford Ks

2020 N.Bramblewood
Wichita Ks.67206

Shelor#1-36

Job Ticket: 49735

DST#: 1

ATTN: David Gould

Test Start: 2012.11.16 @ 12:00:21

Mud and Cushion Information

Mud Type: Gel Chem

Cushion Type:

Oil API:

deg API

Mud Weight: 9.00 lb/gal

Cushion Length:

ft

Water Salinity:

61000 ppm

Viscosity: 48.00 sec/qt

Cushion Volume:

bbbl

Water Loss: 12.39 in³

Gas Cushion Type:

Resistivity: 0.00 ohm.m

Gas Cushion Pressure:

psig

Salinity: 12600.00 ppm

Filter Cake: 0.20 inches

Recovery Information

Recovery Table

Length ft	Description	Volume bbl
45.00	MW 47% _m 53% _w (good oder)	0.221
0.00	Rw .18 ohms@48deg	0.000

Total Length: 45.00 ft Total Volume: 0.221 bbl

Num Fluid Samples: 0

Num Gas Bombs: 0

Serial #: none

Laboratory Name:

Laboratory Location:

Recovery Comments:

