



**TRILOBITE
TESTING, INC.**

DRILL STEM TEST REPORT

Berexco LLC
2020 N.Bramblewood
Wichita Ks.67206
ATTN: David Gould

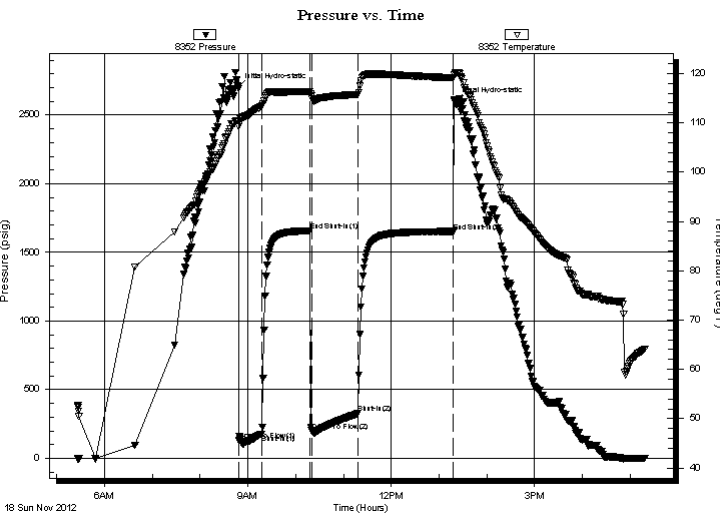
34-29s-24w Ford Ks
Shelor#1-36
Job Ticket: 49736 **DST#: 2**
Test Start: 2012.11.18 @ 05:26:14

GENERAL INFORMATION:

Formation: **Morrow Sd.**
Deviated: No Whipstock: ft (KB)
Time Tool Opened: 08:48:44
Time Test Ended: 17:18:59
Interval: **5348.00 ft (KB) To 5383.00 ft (KB) (TVD)**
Total Depth: 5383.00 ft (KB) (TVD)
Hole Diameter: 7.88 inches Hole Condition: Poor
Test Type: Conventional Bottom Hole (Reset)
Tester: Gary Pevoteaux
Unit No: 56
Reference Elevations: 2601.00 ft (KB)
2588.00 ft (CF)
KB to GR/CF: 13.00 ft

Serial #: 8352 Outside
Press @ RunDepth: 329.26 psig @ 5349.00 ft (KB) Capacity: 8000.00 psig
Start Date: 2012.11.18 End Date: 2012.11.18 Last Calib.: 2012.11.18
Start Time: 05:26:19 End Time: 17:18:59 Time On Btm: 2012.11.18 @ 08:47:14
Time Off Btm: 2012.11.18 @ 13:19:29

TEST COMMENT: IF: Strong blow . B.O.B. in 65 secs. GTS in 13 mins. (see gas flow report)
IS: Weak blow . 1 - 4".
FF: Strong blow . (see gas flow report)
FS: Strong blow . B.O.B.



PRESSURE SUMMARY

Time (Min.)	Pressure (psig)	Temp (deg F)	Annotation
0	2703.09	110.38	Initial Hydro-static
2	131.29	109.24	Open To Flow (1)
31	178.40	113.35	Shut-In(1)
91	1657.79	116.34	End Shut-In(1)
93	201.23	115.46	Open To Flow (2)
151	329.26	115.78	Shut-In(2)
271	1652.80	119.12	End Shut-In(2)
273	2595.12	119.77	Final Hydro-static

Recovery

Length (ft)	Description	Volume (bbl)
175.00	GMCO 50%g 21%m 29%o	0.86
385.00	GMCO 45%g 24%m 31%O	5.38
360.00	CGO 29%g 71%o	5.05

* Recovery from multiple tests

Gas Rates

	Choke (inches)	Pressure (psig)	Gas Rate (Mcf/d)
First Gas Rate	0.38	8.00	82.06
Last Gas Rate	0.38	20.00	126.02
Max. Gas Rate	0.38	20.00	126.02



**TRILOBITE
TESTING, INC.**

DRILL STEM TEST REPORT

FLUID SUMMARY

Berexco LLC

34-29s-24w Ford Ks

2020 N.Bramblewood
Wichita Ks.67206

Shelor#1-36

Job Ticket: 49736

DST#: 2

ATTN: David Gould

Test Start: 2012.11.18 @ 05:26:14

Mud and Cushion Information

Mud Type: Gel Chem

Cushion Type:

Oil API:

38.6 deg API

Mud Weight: 10.00 lb/gal

Cushion Length:

ft

Water Salinity:

16000 ppm

Viscosity: 53.00 sec/qt

Cushion Volume:

bbbl

Water Loss: 15.98 in³

Gas Cushion Type:

Resistivity: 0.00 ohm.m

Gas Cushion Pressure:

psig

Salinity: 16000.00 ppm

Filter Cake: 0.20 inches

Recovery Information

Recovery Table

Length ft	Description	Volume bbl
175.00	GMCO 50%g 21%m 29%o	0.861
385.00	GMCO 45%g 24%m 31%O	5.382
360.00	CGO 29%g 71%o	5.050

Total Length: 920.00 ft

Total Volume: 11.293 bbl

Num Fluid Samples: 0

Num Gas Bombs: 1

Serial #: GP-2

Laboratory Name: Caraway

Laboratory Location: Liberal, KS

Recovery Comments:



**TRILOBITE
TESTING, INC.**

DRILL STEM TEST REPORT

GAS RATES

Berexco LLC

34-29s-24w Ford Ks

2020 N.Bramblewood
Wichita Ks.67206

Shelor#1-36

Job Ticket: 49736

DST#: 2

ATTN: David Gould

Test Start: 2012.11.18 @ 05:26:14

Gas Rates Information

Temperature: 59 (deg F)
Relative Density: 0.65
Z Factor: 0.8

Gas Rates Table

Flow Period	Elapsed Time	Choke (inches)	Pressure (psig)	Gas Rate (Mcf/d)
1	20	0.38	8.00	82.06
1	30	0.38	10.00	89.38
2	10	0.38	7.00	78.39
2	20	0.38	15.00	107.70
2	30	0.38	17.00	115.03
2	40	0.38	19.00	122.35
2	60	0.38	20.00	126.02

