



Scale 1:240 (5"=100') Imperial  
Measured Depth Log

Well Name: SHELOR #1-34  
Location: NE NW SE SW SECTION 34 29S 24W  
License Number: 34317, API# 15-057-20853  
Spud Date: 11/9/2012  
Surface Coordinates: 1233' FROM SOUTH LINE OF SECTION  
1943' FROM WEST LINE OF SECTION  
Bottom Hole 1233' FROM SOUTH LINE OF SECTION  
Coordinates: 1233' FROM SOUTH LINE OF SECTION  
Ground Elevation (ft): 2588' K.B. Elevation (ft): 2601'  
Logged Interval (ft): 4200' To: 5500' Total Depth (ft): 5500'  
Formation: MISSISSIPPI  
Type of Drilling Fluid: CHEMICAL, MUD-CO

Region: FORD CO. KS.  
Drilling Completed: 11/21/2012

Printed by WellSight Log Viewer from WellSight Systems 1-800-447-1534 www.WellSight.com

OPERATOR

Company: BEREXCO LLC.  
Address: 2020 NORTH BRAMBLEWOOD  
WICHITA, KANSAS 67206  
(316) 337-8312

GEOLOGIST

Name: DAVID GOULD (LOGGER)  
Company: DMT COMPANY  
Address: 532 SUNRISE  
PRATT, KANSAS 67124  
(620) 388-2847

Well Name & No.: Shelor 1-34 Company: Berexco Test No.: 1 Interval Tested: 5152 - 5165

Zone Tested: Pawnee Times: 50-60-60-60

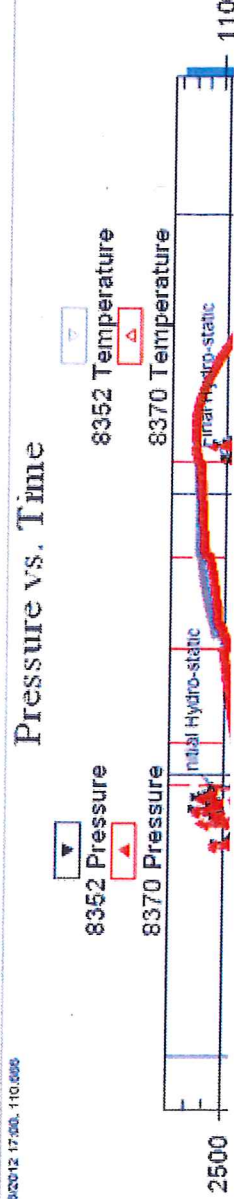
Blow Description: IFP: Weak blow 1/4" or less. ISI: No blow back FFP: Very weak surface blow for last 35 min. of final open FSI: No blow back

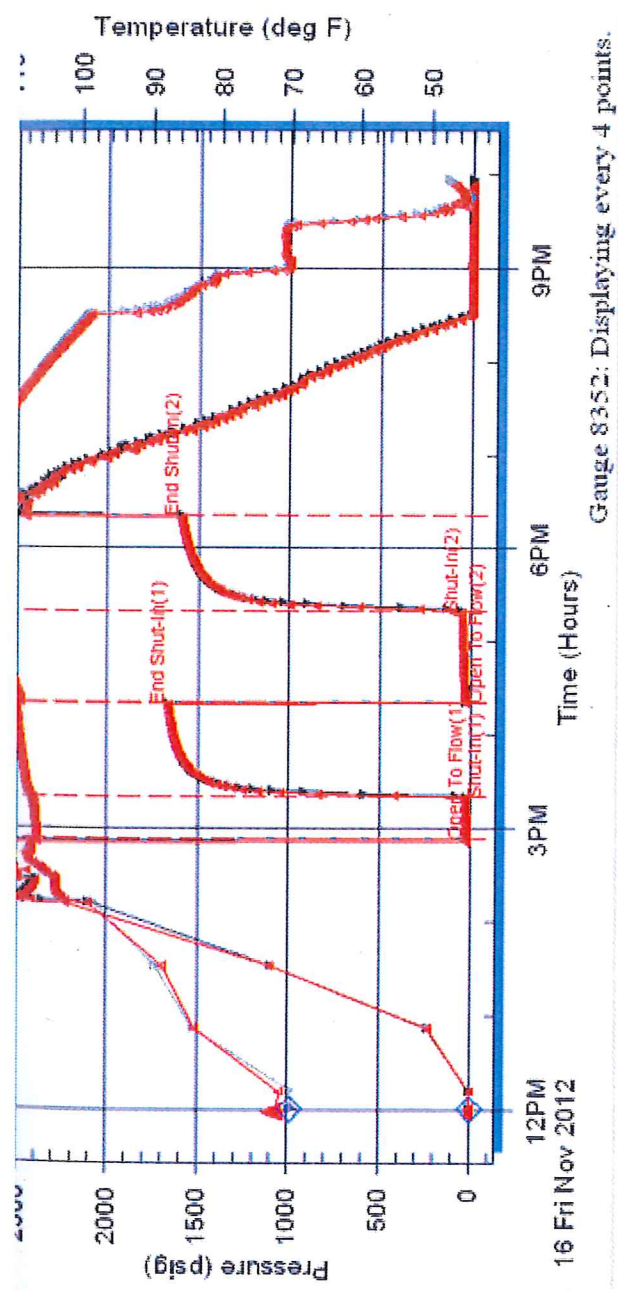
Rec: 45 feet of MW (Good Oder) 53 % Water 47% Mud Rec. Total: 45', BHT: ? Gravity: N/A

Initial Hydrostatic: 2546 First Initial Flow: 20 First Final Flow: 27 Initial Shut-In: 1663

Second Initial Flow: 29 Second Final Flow: 49 Final Shut-In: 1593 Final Hydrostatic: 2487

11/26/2012 17:00:110.005





Well Name & No.: Shelor 1-34 Company: Berexco Test No.: 2 Interval Tested: 5348 - 5383

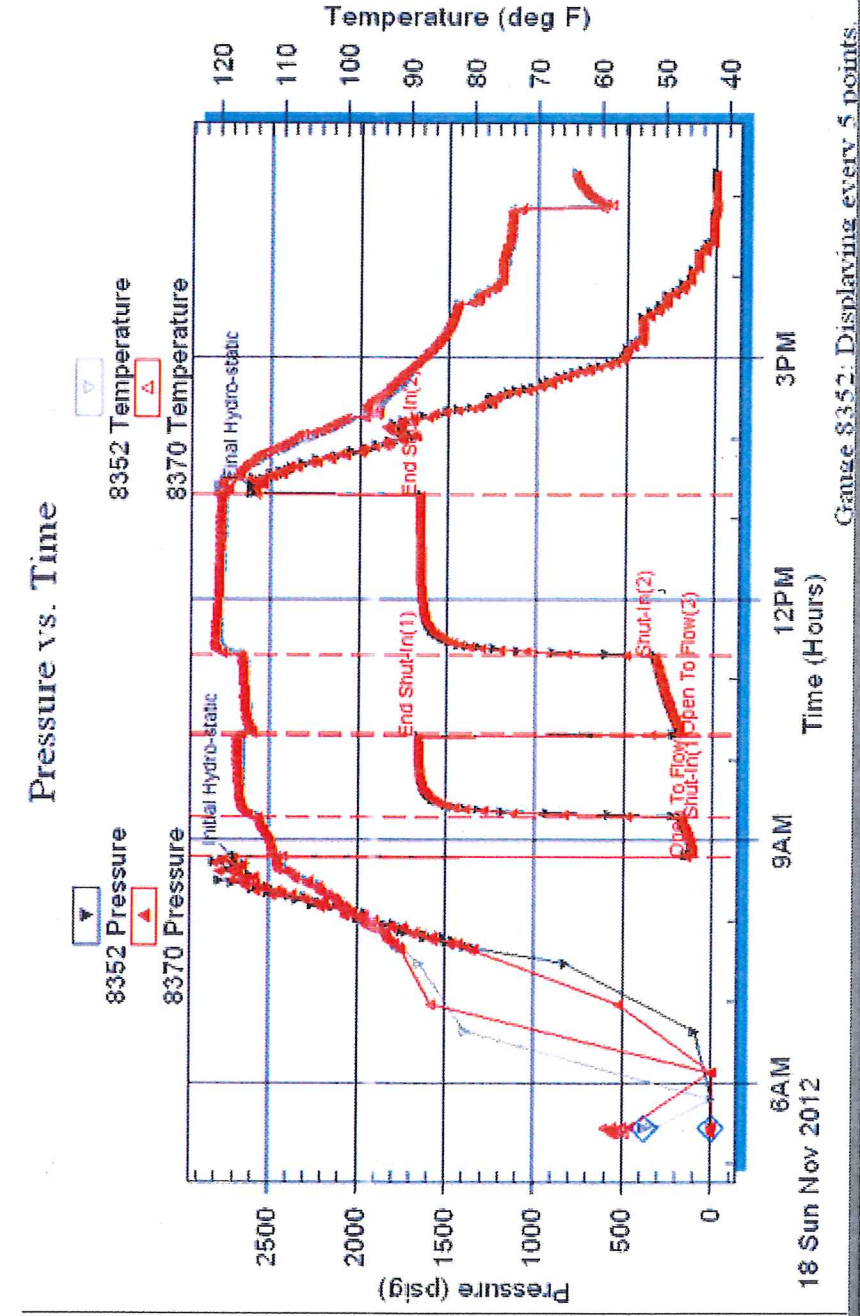
Zone Tested: Morrow Times: 30-60-60-120

Blow Description: IFP: Strong blow BOB in 65 Sec. GTS 13 min. ISI: Weak blow 1-4" FFP: Strong blow FSI: Strong blow BOB

Rec: 360 Feet of CGO 29% Gas 71% Oil, 385 Feet of GMCO 45% Gas 31% Oil 24% Mud, 175 Feet of GMCO 50% Gas 29% Oil 21% Mud, Rec. Total: 920', BHT: ? Gravity: 38.6

Initial Hydrostatic: 2703 First Initial Flow: 131 First Final Flow: 178 Initial Shut-In: 1657

Second Initial Flow: 201 Second Final Flow: 329 Final Shut-In: 1653 Final Hydrostatic: 2595





Comments

CONTRACTOR:  
BEREDCO RIG #2

SURVEYS:

- 690' 1 DEGREE
- 1690' 1 DEGREE
- 2918' 1 DEGREE
- 4272' 1 DEGREE
- 4962' 1 DEGREE


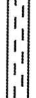

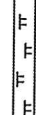
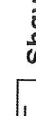
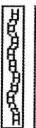



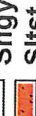
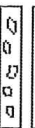


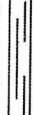
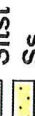
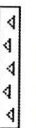


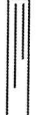
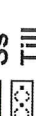
BIT RECORD:

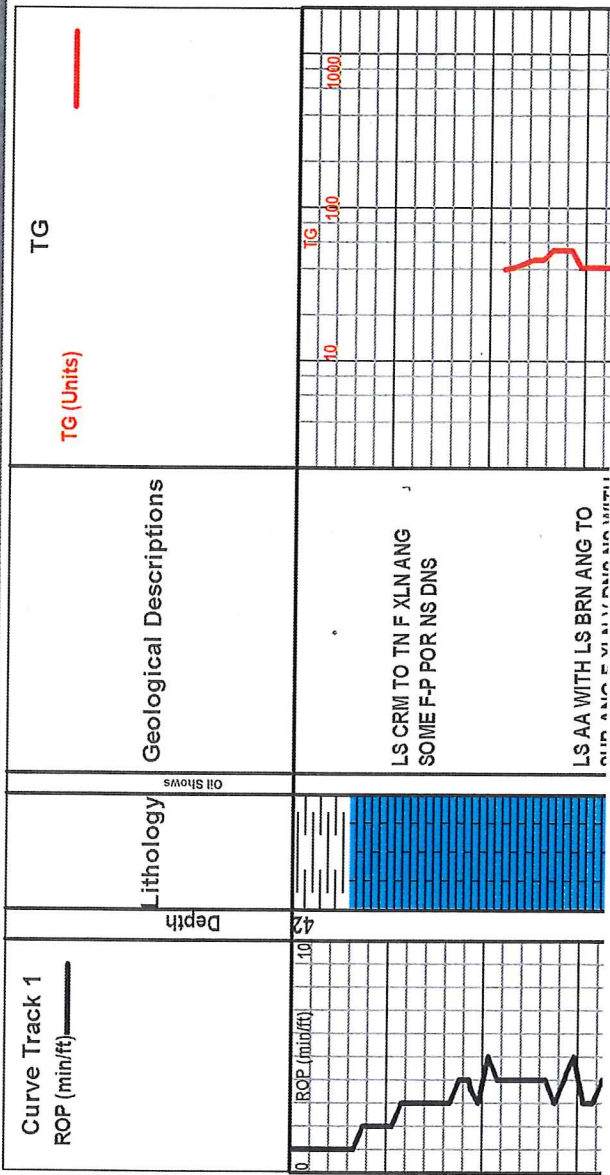
- #1 RR 12 1/4 0' TO 690'
- #2 STC F12Y 7 7/8 PX8750 690' TO 4962'
- #3 STC F27I 7 7/8 PX2800 4962' TO 5500' (TD)

DAILY STATUS: (6:00 AM)

- 11/08/2012 MOVE RIG, DRILL RAT & MOUSE HOLE
- 11/09/2012 DRILL & SET SURFACE (PLUG DOWN @ 6:00 AM)
- 11/10/2012 WOC, DRILL AHEAD TO 1290'
- 11/11/2012 DRILL AHEAD TO 2300'
- 11/12/2012 DRILL AHEAD TO 3320'
- 11/13/2012 DRILL AHEAD TO 4075' DISPLACE @ 3587'
- 11/14/2012 DRILL AHEAD TO 4615'
- 11/15/2012 DRILL AHEAD TO 4962' TOH FOR BIT TRIP
- 11/16/2012 TIN WITH BIT #3, DRILL AHEAD TO 5165', SHORT TRIP FOR DST #1
- 11/17/2012 DST #1, DRILL AHEAD TO 5220'
- 11/18/2012 DRILL AHEAD TO 5383', DST #2
- 11/19/2012 DST #2, DRILL AHEAD TO 5404'
- 11/20/2012 DRILL AHEAD TO 5500' (TD), RUN LOGS, TTH WITH BIT
- 11/21/2012 LAY DOWN PIPE, RUN 5 1/2 CASING, RIG DOWN

ROCK TYPES

 Anhy	 Clyst	 Gyp	 Mrlst	 Shgy
 Bent	 Coal	 Igne	 Salt	 Slst
 Bre	 Congl	 Lmst	 Shale	 Ss
 Cht	 Dol	 Meta	 Shcol	 Till



Curve Track 1

ROP (min/ft)

Depth

TG

TG (Units)

TG

Geological Descriptions

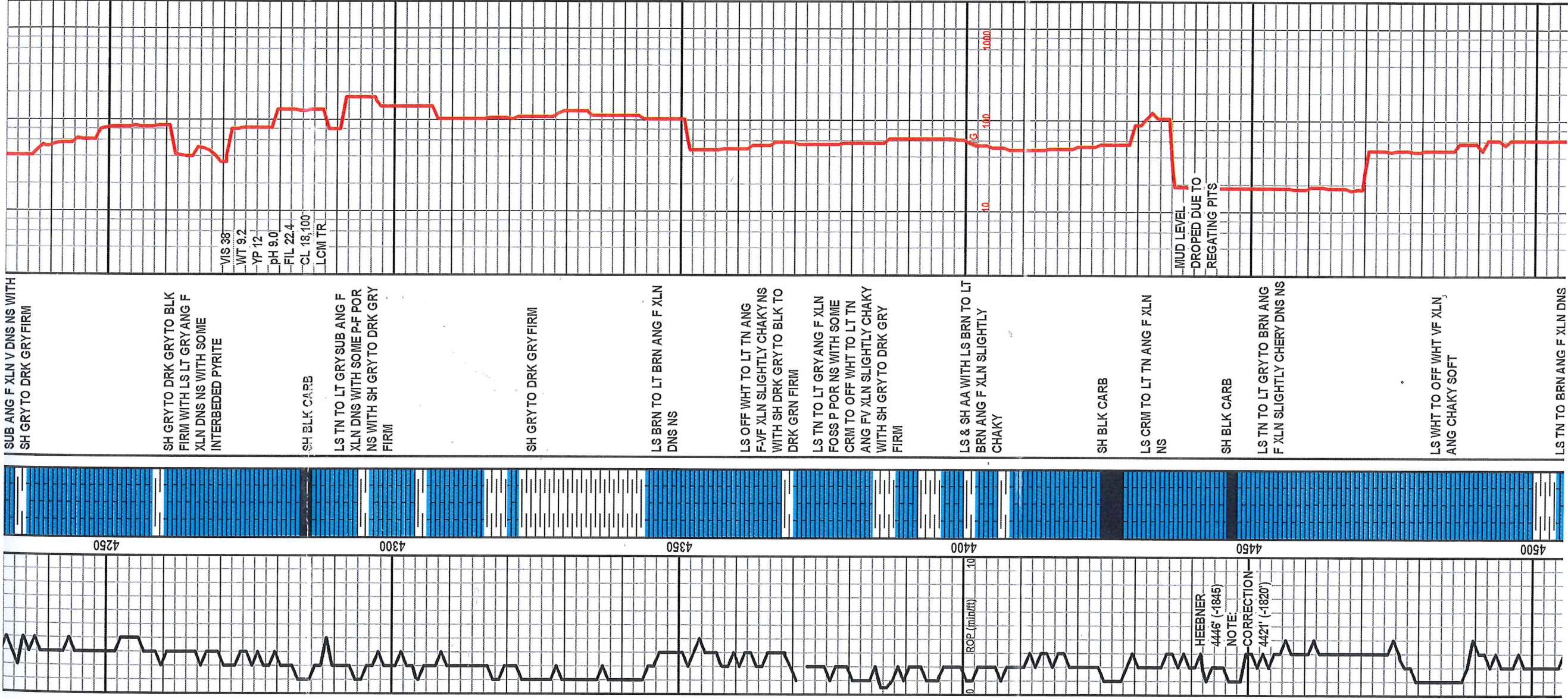
Lithology

Oil Shows

LS CRM TO TN F XLN ANG  
SOME F-P POR NS DNS

LS AA WITH LS BRN ANG TO  
SOME F-P POR NS DNS





SUB ANG F XLN V DNS NS WITH SH GR TO DRK GR FIRM

SH GR TO DRK GR TO BLK FIRM WITH LS LT GR ANG F XLN DNS NS WITH SOME INTERBEDDED PYRITE

SH BLK CARB

LS TN TO LT GR SUB ANG F XLN DNS WITH SOME P-F POR NS WITH SH GR TO DRK GR FIRM

SH GR TO DRK GR FIRM

LS BRN TO LT BRN ANG F XLN DNS NS

LS OFF WHT TO LT TN ANG F-VF XLN SLIGHTLY CHAKY NS WITH SH DRK GR TO BLK TO DRK GRN FIRM

LS TN TO LT GR ANG F XLN FOSS P POR NS WITH SOME CRM TO OFF WHT TO LT TN ANG FV XLN SLIGHTLY CHAKY WITH SH GR TO DRK GR FIRM

LS & SH AA WITH LS BRN TO LT BRN ANG F XLN SLIGHTLY CHAKY

SH BLK CARB

LS CRM TO LT TN ANG F XLN NS

SH BLK CARB

LS TN TO LT GR TO BRN ANG F XLN SLIGHTLY CHRY DNS NS

LS WHT TO OFF WHT VF XLN, ANG CHAKY SOFT

LS TN TO BRN ANG F XLN DNS

-VIS 38  
-WT 9.2  
-YP 12  
pH 9.0  
-FIL 22.4  
-CL 18,100  
LCM TR

MUD LEVEL  
DROPPED DUE TO  
REGATING PITS

HEEBNER  
4446' (-1845)

NOTE:

-CORRECTION  
4421' (-1820')

ROP (min/ft)

4250

4300

4350

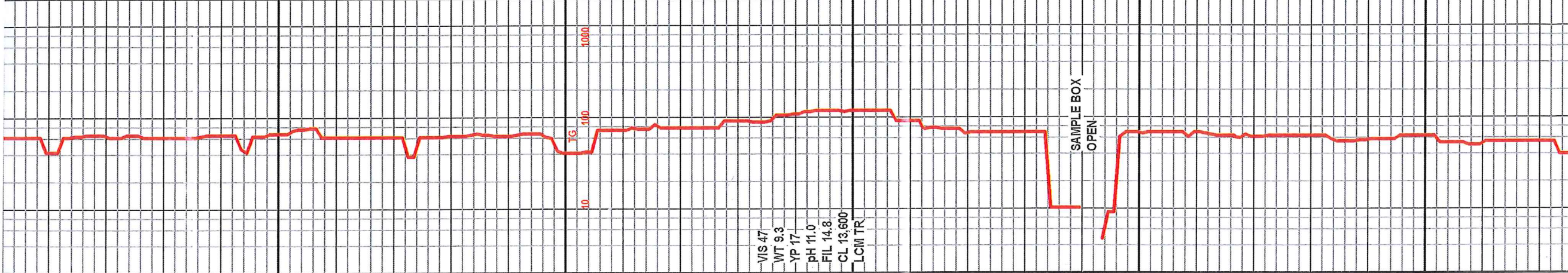
4400

4450

4500

10  
100  
1000





LS TN TO BRN ANG F XLN DNS NS

LS BRN ANG F XLN CHERTYV DNS NS

LS LT GRY TO TN ANG SLIGHTLY VUGGY FOSS F XLN DNS

LS TN ANG F XLN VUGGY DNS WITH SH LT GRY FIRM

LS TN TO BRN ANG F XLN DNS SOME V DNS CHERTY WITH SH LT GRY TO GRY FIRM

LS LT TO DRK BRN VUGGY FOSS F XLN DNS

LS BRN TO LT GRY SLIGHTLY VUGGY DNS WITH INTERBEDDED DRK GRY SH

LS LT TN TO LT GRY ANG F XLN DNS WITH SH GRY TO GRN FIRM

LS DRK BRN ANG F XLN V DNS NS WITH SH AA

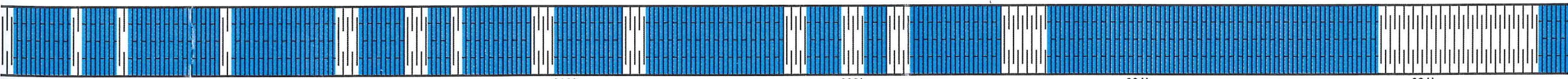
LS CRM TO TN ANG F XLN DNS WITH INTERBEDDED PYRITE WITH SH GRY V SOFT

LS BRN TO DRK BRN ANG F XLN V DNS NS FOSS

LS AA WITH LS GRY ANG F XLN DNS NS

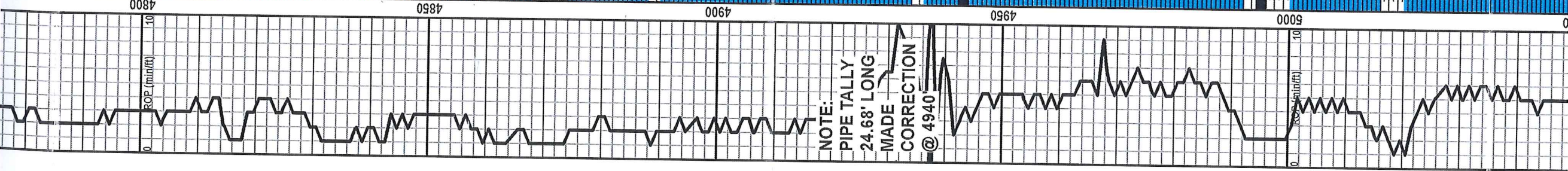
LS AA WITH SH GRY TO DRK GRY TO GRN FIRM TO SOFT

VIS 47  
WT 9.3  
YP 17  
pH 11.0  
FIL 14.8  
CL 13,600  
LCM TR

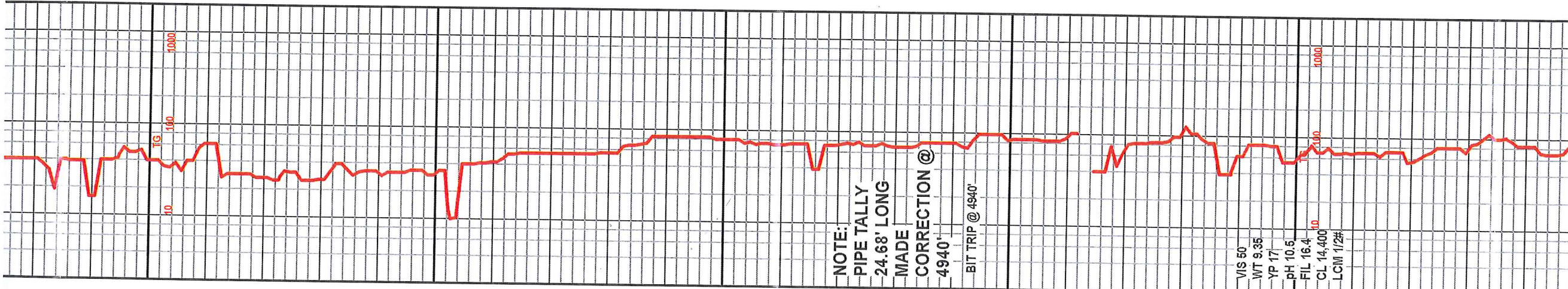


4550 4600 4650 4700 4750





NOTE:  
 PIPE TALLY  
 24.68' LONG  
 MADE  
 CORRECTION  
 @ 4940'

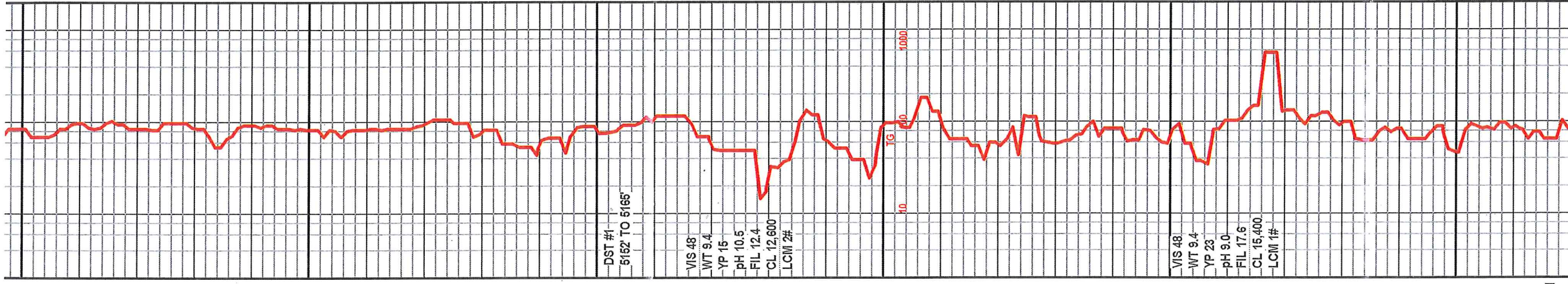


NOTE:  
 PIPE TALLY  
 24.68' LONG  
 MADE  
 CORRECTION @  
 4940'  
 BIT TRIP @ 4940'

VIS 50  
 WT 9.35  
 YP 17  
 PH 10.5  
 FIL 16.4  
 CL 14.400  
 LCM 1/2#

LS TN TO LT GR Y ANG F XLN FOSS DNS NS  
 LS AA MOSTLY LS TN  
 SH BLK CARB  
 LS TN ANG F XLN SLIGHTLY CHAKLY WITH SOME BEING DNS  
 LS AA WITH LS BRN TO DRK BRN ANG F XLN V DNS WITH SH DRK GR Y TO GR Y FIRM  
 SH LT GR Y TO GRN FIRM TO SOFT WITH LS TN TO OFF WHT VF XLN CHAKLY  
 LS CRM TO TN F XLN ANG SLIGHTLY CHAKLY WITH LS BRN TO TN F XLN POOLIC POR ANG NS DNS WITH TR CHERT  
 LS BRN TO DRK BRN ANG CHERTY F XLN DNS TR PYRITE  
 LS TN ANG F XLN DNS WITH SOME BEING SLIGHTLY CHAKLY NS  
 SH BLK CARB  
 NOTE:  
 PIPE TALLY 24.68' LONG  
 MADE CORRECTION @ 4940'  
 LS TN ANG F XLN DNS SOME SLIGHTLY CHAKLY NS WITH CHERT ANG V DNS  
 LS DRK BRN AA  
 SH BLK CARB WITH SH DRK GR Y FIRM  
 LS CRM TO TN F XLN DNS  
 SH GR Y FIRM  
 LS DRK BRN TO DRK GR Y ANG F-M XLN DNS TO V DNS  
 LS CRM TO TN ANG F XLN DNS WITH CHERT DRK BRN SHARP V DNS  
 LS BRN TO DRK BRN F-M XLN ANG V DNS WITH SH DRK GR Y



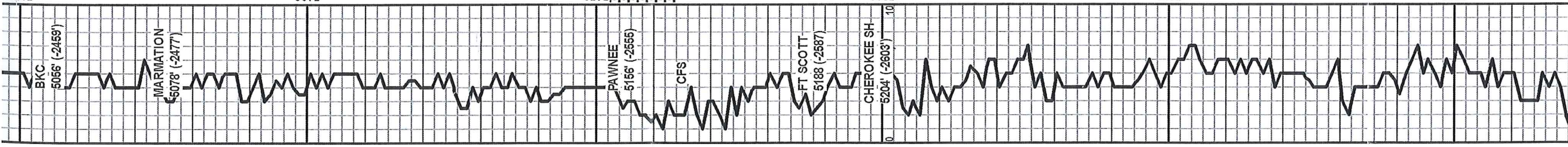


FIRM TO DNS WITH INTERBEDDED PYRITE  
 SH LT GRY SOFT  
 LS AA WITH LS OFF WHT TO CRW ANG VF XLN CHAKLY  
 LS TN TO BRN F XLN ANG FOSS V DNS NS WITH SH GRN TO LT GRY FIRM  
 LS TN TO BRNANG F XLN DNS NS  
 LS DRK BRN TO DRK GRY ANG F XLN CHERTY V DNS NS  
 LS TN TO LT BRN ANG F XLN SLIGHTLY VUGGY NS WITH SH GRY TO DRK GRY FIRM  
 LS TN ANG F XLN DNS  
 SH BLK CARB  
 LS LT TN ANG F XLN F P POR F-G FLOR F CUT V SLIGHT STAIN SLIGHT ODOR N FREE OIL N GAS BUBBLES  
 LS TN F XLN ANG VP OOLIC POR SOME SLIGHTLY CHAKLY NS  
 LS TN TO LT BRN F XLN FOSS DNS NS  
 SH BLK CARB  
 LS BRN TO DRK BRN F XLN V DNS NS  
 SH BLK CARB  
 SH DRK GRY TO GRY FIRM WITH LS DRK TN F XLN ANG DNS SHALLY  
 SH GRY TO DRK GRY FIRM WITH SH GRN SILTY SOFT  
 SH BLK CARB  
 LS BRN ANG F XLN DNS WITH SH GRY TO GRN  
 LS AA WITH SH DRK GRY TO GRN FIRM TO SOFT  
 SH GRY TO BLK FIRM  
 SH BLK CARB  
 LS TN TO LT BRN ANG F XLN DNS NS WITH SS GRY TO CLEAR VF GR SUB RD V TIGHT NS N FLOR  
 LS TN F XLN FOSS DNS WITH SH AA  
 LS TN TO BRN ANG F XLN DNS WITH SH GRY FIRM WITH INTERBEDDED PYRITE  
 SH AA WITH SOME BLK HD  
 LS BRN DNS WITH SH BLK CARB  
 LS TN ANG F XLN DNS WITH SH BLK CARB

DST #1  
5152 TO 5165'

VIS 48  
WT 9.4  
YP 15  
pH 10.5  
FIL 12.4  
CL 12,600  
LCM 2#

VIS 48  
WT 9.4  
YP 23  
pH 9.0  
FIL 17.6  
CL 15,400  
LCM 1#



BKC 5056' (-2455')  
 MARIMATION 5078' (-2477')  
 PAWNEE 5156' (-2555')  
 CFS  
 FT SCOTT 5188' (-2587')  
 CHEROKEE SH 5204' (-2603')

5050 5100 5150 5200 5250 5300



